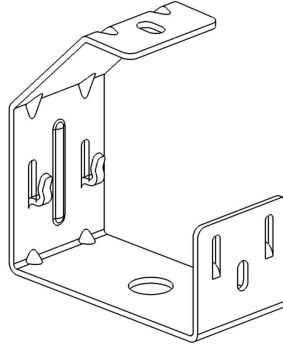


**SF 100**

Reference(s) : 586 100/103/104



**1 RANGE**

Ref	Code	Matière Raw material	Norme Standard	Finition Coating	Norme standard	Epaisseur Thickness (mm/Inch)	Colisage Packing	Masse Weight (KG)
SF 100	586 100	DX 51 D Z275 MAC	EN 10346	GS	-	3/0,12"	1	0,493
SF 100	586 103	S 235 JR	EN 10025	GC	NF EN ISO 1461	3/0,12"	1	0,493
SF 100	586 104	X2 Cr Ni Mo 17-12-2	EN 10088	316L	-	3/0,12"	1	0,493

Dimensions in (mm/inch) :

