

## Accessories

### Industrial Acoustic Hood - 23dB

Accessories



- Suitable for use with GAI-Tronics telephones, Page/Party® equipment and Elemecplus external access panels
- Glass fibre Reinforced Plastic laminate construction
- 23dB Mean noise reduction
- Polypropylene interior
- 50mm acoustic lining panels
- Internal gear plate for ease of equipment mounting – optional sizes
- Up to 60kgs of equipment can be carried
- Detachable internal shelf
- External mounting straps
- Fire retardant

# Accessories

## Industrial Acoustic Hood - 23dB Accessories

### TECHNICAL SPECIFICATIONS

**Body Material -**

**Main Body and Detachable Shelf:**

General purpose resin continuous filament MAT

**Acoustic Damping:**

Insulation - Rockwool RW3, Density 60kg/m3 (50mm)

**Acoustic Facing:**

Internal Lining - White perforated PPC, 3mm thickness.

**Fire Resistance:**

BS476 Part 7 Fire Retardant Classification of 1

**Telephone Mounting Plate:**

304 Grade Stainless Steel with White Gloss Epoxy

Polyester Powder finish, or

316 (Marine) Grade Stainless Steel option

**Mounting Straps:**

Galvanised Steel - Standard

Stainless Steel - Option

**Colour:**

Yellow or red as standard. Other options available

**Weight:**

Approx 25 kg

### ORDER CODE

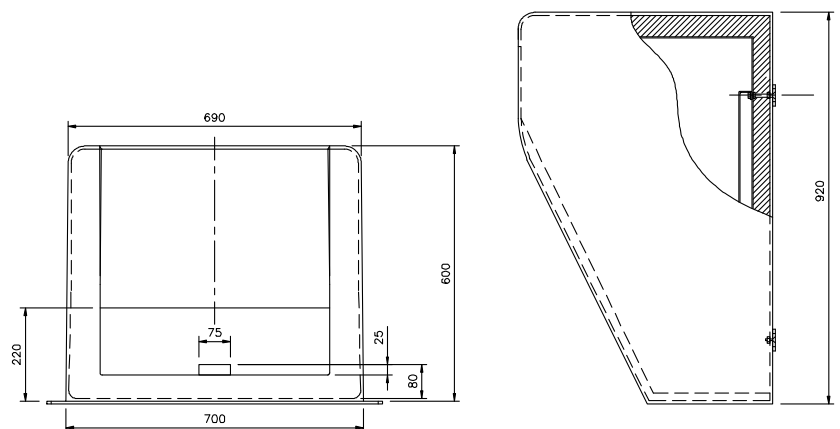
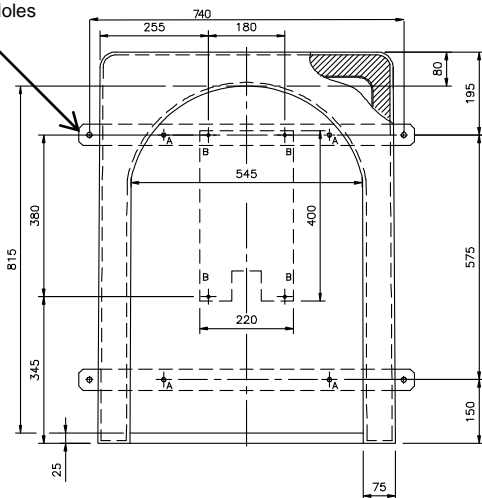
	Mounting Plate: Stainless Steel (304)	Mounting Plate: Stainless Steel (316)	Mounting Straps: Galvanised Steel	Mounting Straps: Stainless Steel (316)	Internal Shelf
To be used with Auteldac 4 telephones and Page/Party® units					
988-60-0002-00*	✓		✓		✓
988-60-0002-10*	✓			✓	✓
988-60-0002-20*		✓		✓	✓
Larger gear plate: To be used with Drillers Intercom stations, SMART Series Page/Party® units and Elemecplus external access panels					
988-60-0002-50*		✓		✓	✓
988-60-0002-60*		✓	✓		✓

* colour	yellow	red	blue	grey	orange
	1	2	3	4	5

### DIMENSIONS

- H 920 x W 690 x D 600 mm
- Fixing: W 740 x H 575 mm
- Fixing holes are 12mm diameter
- Gear plate for 00\*, 10\* and 20\* versions:  
W220mm x H400mm
- Gear plate for 50\* and 60\* versions:  
W426mm x H610mm

Fixing Holes  
X4



(Gear plate dimensions shown on this diagram are for 00\*, 10\* and 20\* versions)