

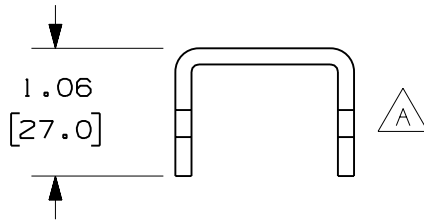
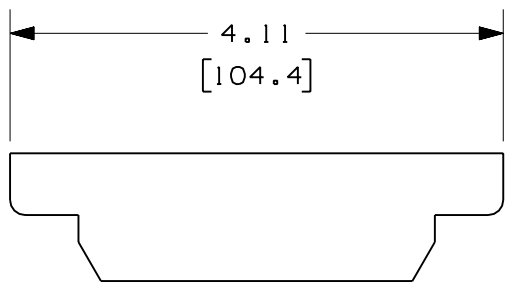
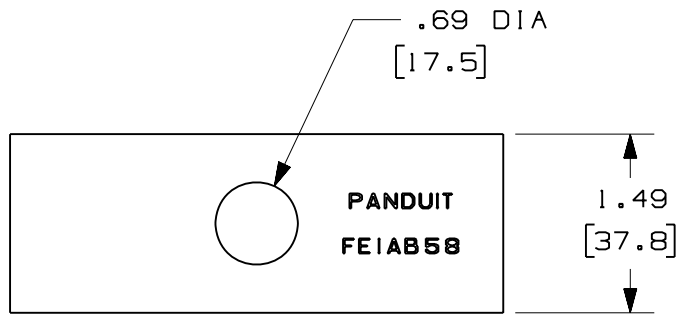
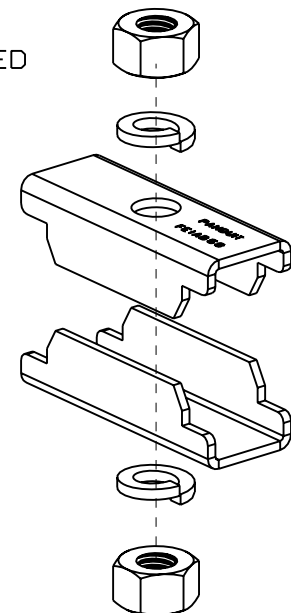


PANDUIT PART NUMBER	WEIGHT
FE1AB58	1.10 LB/EACH (499g/EACH)



NOTES:

- SEE CURRENT CATALOG FOR ADDITIONAL PART SUFFIXES TO INDICATE PACKAGE QUANTITY.
- THE FIBER ROUTING EIA/TIA THREADED ROD MOUNTING BRACKET - 5/8" THREADED ROD IS USED TO SUPPORT FIBER-DUCT AND FIBERRUNNER MOUNTING BRACKETS DIRECTLY FROM THE TOP OF A STANDARD 19" (482.6) EIA/TIA RACK WITH THE USE OF 5/8" THREADED ROD (NOT INCLUDED).
- THE FIBER ROUTING EIA/TIA THREADED ROD MOUNTING BRACKET INCLUDES:
TWO (2) BRACKET CLIPS,
TWO (2) 5/8" HELICAL SPRING LOCKWASHERS,
TWO (2) 5/8-11 HEAVY HEX NUTS.
- FINISH COLOR: BLACK (EXCEPT FOR HARDWARE)
- DIMENSIONS IN PARENTHESES ARE IN METRIC.



ENG. REF.: D38558BC_DC_FE1AB58_01.prt

CAD FILENAME/LAYERS: **FE1AB58.pdf**

REV	DATE	BY	CHK	DESCRIPTION	ECN	R	CUST	SUP	GMBH
-	-----	---	--	G. REVISED PART WEIGHT. F. REVISED PART GEOMETRY.	-----	--	--		
-	-----	---	--	E. REVISED GENERAL NOTES. D. REVISED DRAWING TITLE.	-----	--	--		
2	7-31-06	DTP	SMF	C. REVISED CAD FILENAME. B. REV'D DWG. TO CUR. STAND.	38558-03	RN	RN		
1	12-19-02	JHNU	RPA	A. REVISED VIEWS.	38558-03	RN	RN		
R	11-19-02	JHNU	RPA	RELEASED TO PRODUCTION	38558-03	RN	RN		

PANDUIT CORP TINLEY PARK, ILLINOIS

FIBER ROUTING EIA/TIA THREADED ROD MOUNTING BRACKET - 5/8" THREADED ROD (FE1AB58)
CUSTOMER DRAWING

UNLESS OTHERWISE SPECIFIED, DIMENSIONAL TOLERANCES ARE:
(.X) ± (.XXX) ±
(.XX) ± .03 (.8) ANGLES ±

UNLESS OTHERWISE SPECIFIED, ALL DIMENSIONS ARE GIVEN IN INCHES, THIRD ANGLE PROJECTION.

SCALE: NONE

DRAWING NO. 38558-03 DWG SIZE A

MAT'L: STEEL

DRAWN BY: JHNU
DATE: 11-19-02
CHK'D: RPA

