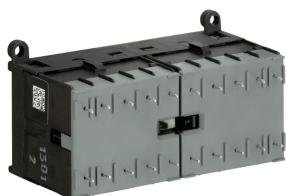


PRODUCT-DETAILS

VB6SA-30-10-P-2.8

VB6SA-30-10-P-2.8 Mini Reversing Contactor 17 ... 32 V DC - 3 NO - 0 NC - Soldering Pins



Informations générales

Extension du type de produit	VB6SA-30-10-P-2.8
Code de produit	GJL1213919R7102
EAN	4013614156731
Description courte	VB6SA-30-10-P-2.8 Mini Reversing Contactor 17 ... 32 V DC - 3 NO - 0 NC - Soldering Pins
Description longue	<p>The VB6SA-30-10-P mini reversing contactor is a compact 3 pole contactor with 1 auxiliary contact, soldering pins and mechanical interlock and safety blocking. They are ideally suited for applications where reliability is a must and space is at a premium. Mini reversing contactors are used in residential buildings, commercial buildings and industrial applications for the control of three-phase motor loads up to 4 kW (AC-3). Due to the low coil consumption, this device can be directly controlled by a PLC. Further features are the noiseless and hum-free coil, the integrated protective circuit with diodes and additional overvoltage protection, a switch position indication and the integrated possibility for rail mounting. Auxiliary contacts,</p>

Commande

Quantité minimum	1 pièce
Code douanier	85365080

Downloads Préférés

Fiche produit, informations techniques	1SBC100214C0202
Instructions et manuels	2CDC102046M6801

CAD Dimensional Drawing	2CDC001079B0201
Schéma dimensionnel	GJL1200449F0001

Dimensions

Produit Largeur Net	96.2 mm
Produit Hauteur Net	57.5 mm
Produit Longueur Net	47.7 mm
Poids net	0.345 kg

Technique

Nombre de pôles	3
Tension	Circuit auxiliaire 690 V AC Circuit auxiliaire 250 V DC Circuit principal 690 V AC Circuit principal 220 V DC
Fréquence assignée (f)	Circuit de commande 400 Hz Circuit de commande 50 Hz Circuit de commande 60 Hz Circuit principal 60 Hz Circuit principal 50 Hz Circuit principal DC
Tension assignée de tenue aux chocs (U_{imp})	Circuit principal 6 kV
Tension assignée d'isolement (U_i)	690 V acc. to UL/CSA 600 V
Number of Main Contacts NC	0
Number of Main Contacts NO	3
Courant assignée d'emploi AC-1 (I_e)	(220 / 240 V) 40 °C 12 A (220 / 240 V) 55 °C 12 A (380 / 440 V) 40 °C 12 A (380 / 440 V) 55 °C 12 A (690 V) 40 °C 6 A (690 V) 55 °C 6 A
Puissance assignée d'emploi AC-3 (P_e)	(230 V) Three Phase 2.2 kW (400 V) Three Phase 4 kW (500 V) Three Phase 4 kW (690 V) Three Phase, NO 3 kW
Courant assigné de courte durée admissible (I_{cw})	at 40 °C Ambient Temp, in Free Air, from a Cold State 10 s 64 A
Number of Auxiliary Contacts NC	0
Number of Auxiliary Contacts NO	1
Courant assignée d'emploi AC-15 (I_e)	(440 V AC) 3 A (24 V) 4 A (120 V) 4 A (240 V) 4 A (500 V) 2 A (380 / 400 V) 3 A
Courant assignée d'emploi DC-13 (I_e)	(24 V) 2.5 A (110 V) 0.7 A (220 / 240 V) 0.4 A
Courant thermique conventionnel à l'air libre (I_{th})	Main Circuit 12 A
Rated Control Circuit Voltage (U_c)	17 ... 32 V DC
Plage d'utilisation de la	(acc. to IEC 60947-4-1) for AC supply 0.85 ... 1.1 x U_c (at $\theta \leq 55$ °C)

bobine selon	(acc. to IEC 60947-4-1) for DC supply 0.85 ... 1.1 x U _c (at $\theta \leq 55^\circ\text{C}$)
Indice de protection	Auxiliary Circuit Terminals IP20 Control Circuit Terminals IP20 Main Circuit Terminals IP20
Degré de pollution	3
Durabilité mécanique	10000000 cycle
Minimum Switching Capacity	Auxiliary Circuit 17 V Auxiliary Circuit 5 mA
Maximum Electrical Switching Frequency	(AC-1) 300 cycles per hour (AC-15) 600 cycles per hour (AC-3) 600 cycles per hour (DC-1) 600 cycles per hour (DC-13) 600 cycles per hour (DC-3) 600 cycles per hour
Montage sur rail DIN	TH35-15 (35 x 15 mm Mounting Rail) acc. to IEC 60715 TH35-7.5 (35 x 7.5 mm Mounting Rail) acc. to IEC 60715
Power Loss	at Rated Operating Conditions AC-1 per Pole 1 W
Normes et standards	IEC/EN 60947-1 IEC/EN 60947-4-1 IEC/EN 60947-5-1 UL 60947-1 UL 60947-4-1
Remarques	No CA6 or CAF6 mountable

Technique UL/CSA

Maximum Operating Voltage UL/CSA	Circuit principal 600 V AC
Full Load Amps Motor Use	(115 V AC) Single Phase 5.8 A (200 V AC) Three Phase 4.8 A (220 ... 240 V AC) Three Phase 6.8 A (230 V AC) Single Phase 4.9 A (440 ... 480 V AC) Three Phase 4.8 A (550 ... 600 V AC) Three Phase 1.7 A
Puissance nominale UL/CSA	(115 V AC) Single Phase 0.25 Hp (200 V AC) Three Phase 1 Hp (220 ... 240 V AC) Three Phase 2 Hp (230 V AC) Single Phase 0.5 Hp (440 ... 480 V AC) Three Phase 3 Hp (550 ... 600 V AC) Three Phase 1 Hp
General Use Rating UL/CSA	(300 V AC) 8 A
Contact Rating UL/CSA	A600

Environnement

Température de l'air ambiant	Operation -20 ... +55 °C Storage -40 ... +80 °C
Altitude de fonctionnement maximale autorisée	2000 m
Résistance aux chocs selon CEI 60068-2-27	11 ms Pulse 15g
Resistance to Vibrations acc. to IEC 60068-2-6	5g / 5 ... 150 Hz
Statut RoHS	Following EU Directive 2011/65/EU and Amendment 2015/863 July 22, 2019

Certificats et Déclarations (Numéro de document)

CB Certificate	1SAA938000-2002
CQC Certificate	CQC2003010304064033
cURus Certificate	cUL_E191658

Declaration of Conformity - CCC	2020980304001854
Déclaration de Conformité - CE	1SAD101100-3101
Declaration of Conformity - UKCA	1SAD201100-3101
DNV GL Certificate	1SAA938000-0306
EAC Certificate	1SAA920000-2702
KC Certificate	1SAA938000-1501
Certificat RMRS	1SAA938000-0704
Certificat UL	E191658-19880915

Emballage

Emballage Niveau 1 Unités	5 pièce
Emballage Niveau 1 Largeur	115 mm
Emballage Niveau 1 Hauteur	64 mm
Emballage Niveau 1 Longueur	280 mm
Emballage Niveau 1 Poids	1.795 kg
Emballage Niveau 1 EAN	4013614416453

Classifications

Code de classification d'objet	Q
ETIM 4	EC000066 - Magnet contactor, AC-switching
ETIM 5	EC000010 - Starter combination
ETIM 6	EC000010 - combinaison de contacteur
ETIM 7	EC000010 - Combination of contactors
ETIM 8	EC000010 - Combination of contactors
eClass	V11.0 : 27371009
UNSPSC	39121529

Catégories

Produits basse tension → Produits de Contrôle, Protection et sécurité machines → Contacteurs → Mini contacteurs

