

PRODUCT-DETAILS

SU203M-Z15

SU203M-Z15 Miniature Circuit Breaker - 3P - Z - 15 A



Informations générales

Extension du type de produit	SU203M-Z15
Code de produit	2CDS273337R0458
EAN	4016779933421
Description courte	SU203M-Z15 Miniature Circuit Breaker - 3P - Z - 15 A
Description longue	SU203M-Z15 Miniature Circuit Breaker Z-Char., 10kA, 15A, 3P UL489

Technique

Normes et standards	CSA 22.2 No. 5 IEC/EN 60947-2 UL 489
Tripping Characteristic	Z
Tension	acc. to IEC 60898-1 400 V AC acc. to IEC 60898-1 400 V acc. to IEC 60947-2 400 V AC
Tension assignée d'isolement (U_i)	acc. to IEC/EN 60664-1 440 V
Tension assignée de tenue aux chocs (U_{imp})	4 kV at 2000 m 5 kV at Sea Level 6.2 kV
Dielectric Test Voltage	50/60 Hz, 1 min: 2 kV
Type de tension	AC/DC
Courant nominal (I_n)	15 A

Rated Short-Circuit Capacity	(400 V AC) 11.2 kA
Pouvoir assigné de coupure ultime en court-circuit (I_{cu})	(400 V AC) 15 kA (400 V) 15 kA
Rated Conditional Short-Circuit Current (I_{nc})	(400 V) 15 kA
Pouvoir assigné de coupure de service en court-circuit (I_{cs})	(400 V AC) 11.2 kA
Fréquence assignée (f)	50 / 60 Hz DC 50 ... 60 Hz
Power Loss	6.3 W at Rated Operating Conditions per Pole 2.1 W
Power Supply Connection	Arbitrary
Contact Position Indication	Red ON / Green OFF
Classe de limitation d'énergie	3
Electrical Endurance	20000 AC cycle
Mechanical Endurance	20000 cycle
Number of Protected Poles	3
Nombre de pôles	3
Catégorie de Surtension	III
Couple de serrage	2.8 N·m
Screw Terminal Type	Failsafe Bi-directional Cylinder-lift Terminal
Actuator Marking	I / O
Actuator Material	Insulation Group II, Black, Sealable
Qualité du matériau	Insulation Group I, RAL 7035
Montage sur rail DIN	TH35-15 (35 x 15 mm Mounting Rail) acc. to IEC 60715 TH35-7.5 (35 x 7.5 mm Mounting Rail) acc. to IEC 60715
Type d'encastrement	any
Recommended Screw Driver	Pozidriv 2
Accessories Available	Oui
Connecting Capacity	Busbar 10 / 10 mm ² Flexible with Ferrule 0.75 ... 25 mm ² Flexible 0.75 ... 25 mm ² Flexible 0.75 ... 25 mm ² Rigid 0.75 ... 35 mm ² Stranded 0.75 ... 35 mm ²
Installation Size	acc. to DIN 43880 3
Type de borne	Double Clamp

Environnement

Température de l'air ambiant	Operation -25 ... +55 °C Storage -40 ... +70 °C
Reference Ambient Air Temperature	30 °C
Indice de protection	IP20 IP40 Enclosure with Cover IP40
Degré de pollution	3
Environmental Conditions	28 cycles with 55 °C / 90-96 % and 25 °C / 95-100 %
Resistance to Vibrations	5g, 20 cycles at 5 ... 150 ... 5 Hz with load 0.8 In

acc. to IEC 60068-2-6

Résistance aux chocs selon CEI 60068-2-27	25g 2 shocks 13 ms
---	--------------------

Statut RoHS	Following EU Directive 2011/65/EU and Amendment 2015/863 July 22, 2019
-------------	--

Informations RoHS	2CDK400595D2706
-------------------	-----------------

REACH Declaration	9AKK107492A1906
-------------------	-----------------

Informations environnementales	9AKK107680A9140
--------------------------------	-----------------

SCIP	89318623-ff2d-4ce0-aefe-5d16fac11138 Germany (DE)
------	---

Conflict Minerals Reporting Template (CMRT)	9AKK108468A3363
---	-----------------

Technique UL/CSA

Maximum Operating Voltage UL/CSA	480Y / 277 V AC
----------------------------------	-----------------

Interrupting Rating acc. to UL489	(240 V AC) 10 kA (480Y / 277 V AC) 10 kA
-----------------------------------	---

Connecting Capacity UL/CSA	Busbar 18-8 AWG Conductor 18-4 AWG
----------------------------	---------------------------------------

Dimensions

Width in Number of Modular Spacings	3
-------------------------------------	---

Produit Largeur Net	52.5 mm
---------------------	---------

Produit Hauteur Net	111 mm
---------------------	--------

Produit Longueur Net	69 mm
----------------------	-------

Poids net	0.375 kg
-----------	----------

Pole Net Weight	0.125 kg
-----------------	----------

Profondeur d'encastrement (t ₂)	69 mm
---	-------

Commande

Emballage Niveau 1 Unités	carton 1 pièce
---------------------------	----------------

Emballage Niveau 1 Poids	0.4 kg
--------------------------	--------

Certificats et Déclarations (Numéro de document)

Agence de certification	CSA EN IEC UL
-------------------------	------------------------

Installation

Instructions et manuels	2CDC002177D0202
-------------------------	-----------------

Downloads Préférés

Fiche produit, informations techniques	2CDC002177D0202
--	-----------------

Classifications

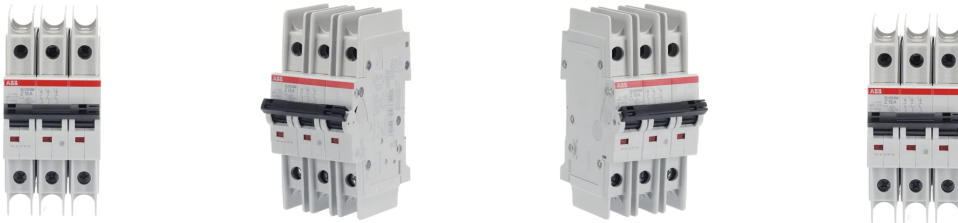
ETIM 8	EC000042 - Miniature circuit breaker (MCB)
ETIM 9	EC000042 - Miniature circuit breaker (MCB)
Catégorie DEEE	5. Small Equipment (No External Dimension More Than 50 cm)
WEEE B2C / B2B	Business To Business
CN8	8536 20 10
UNSPSC	39121603
eClass	V11.0 : 27141901
Code de catégorie granulaire IDEA (IGCC)	4899 >> Miniature circuit breaker (MCB) screw-in model

Accessories

Identifiant	Description	Type	Quantity	Unit Of Measure
2CCA880100R0001	CMS-100PS Sensor	CMS-100PS	1	piece
2CCA880101R0001	CMS-101PS Sensor	CMS-101PS	1	piece
2CCA880102R0001	CMS-102PS Sensor	CMS-102PS	1	piece
2CDS200914R0001	S2C-H6RU Auxiliary Contact	S2C-H6RU	1	piece
2CDS200924R0001	S2C-S6RU Signal / Auxiliary Contact	S2C-S6RU	1	piece
2CDS200908R0001	S2C-A1U Shunt Trip	S2C-A1U	1	piece
2CDS200908R0002	S2C-A2U Shunt Trip	S2C-A2U	1	piece

Catégories

Produits basse tension → Appareillage modulaire et parafoudres → Miniature Circuit Breakers MCBs → Disjoncteurs ≤63A SN201/S200



360°