

Lampholders for Halogen Incandescent Lamps

Cover cap for G9 lampholders type 339

Material: LCP

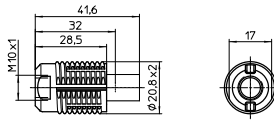
External thread 20.8x2

Moulded thread: M10x1

Weight: 3.2 g, unit: 1000 pcs.

Type: 97760

Ref. No.: 525583



Screw rings

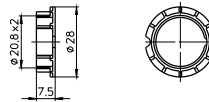
For components with external thread 20.8x2

Material: LCP

Weight: 1.4 g, unit: 1000 pcs.

Type: 97257

Ref. No.: 507490



G9 lampholder

Casing: ceramic, cover plate: LCP, natural

T270, nominal rating: 2/250

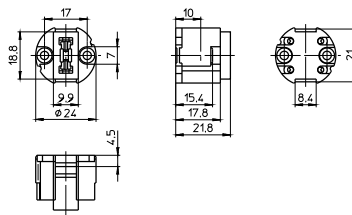
Push-in twin terminals for stranded conductors with ferrule on bare end of core Ø 1.4–1.8 mm

Fixing holes for screws M3

Weight: 14.4 g, unit: 1000 pcs.

Type: 33500

Ref. No.: 502004



Cover caps for G9 lampholder 502004

Material: LCP

External thread 28x2 IEC 60399

Fixing holes for screws M3

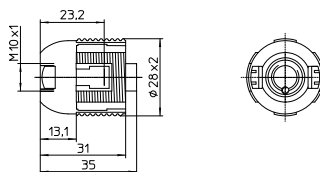
Weight: 8.7/4.6 g, unit: 1000 pcs.

Type: 83310 female nipple: M10x1

Ref. No.: 505951

Type: 97268 moulded thread: M10x1

Ref. No.: 501942



Screw ring

For components with external thread 28x2

Material: LCP

Ø 34 mm, height: 7.5 mm

Weight: 1.9 g, unit: 1000 pcs.

Type: 05202

Ref. No.: 508458

