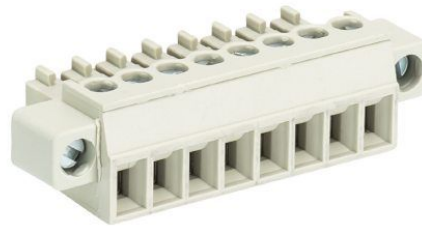


Fiche produit

Article n° 25.621.4353.0

Connecteur PCB 8813 B / 13 F OB



Article n°	25.621.4353.0
EAN	4015573560260
Unité de commande	50 Piece(s)

certificats/approbations



Données techniques

général

Espacement modulaire	3,81 mm
Type de connexion	Connexion à vis
processus de soudure	Aucun
Répartiteur compact	boîte
Nombre de pôles	13
Marquage	Aucun
Fixation	Aucun
Sens de branchement du connecteur	180°

Données techniques

Section transversale nominale	1,5 mm ²
Courant nominal	8 A
Catégorie de surtension I	690 V
Catégorie de surtension II	250 V
Catégorie de surtension III	125 V
Tension nominale d'impulsion	2,5 kV
longueur de fil	6,5 mm

données de connexion

Section minimum fil rigide	0,14 mm ²
Section maximum fil rigide	1,5 mm ²
Section minimum multi-brins	0,14 mm ²
Section maximum multi-brins	1,5 mm ²
longueur de fil	6,5 mm

Données techniques UL/CSA

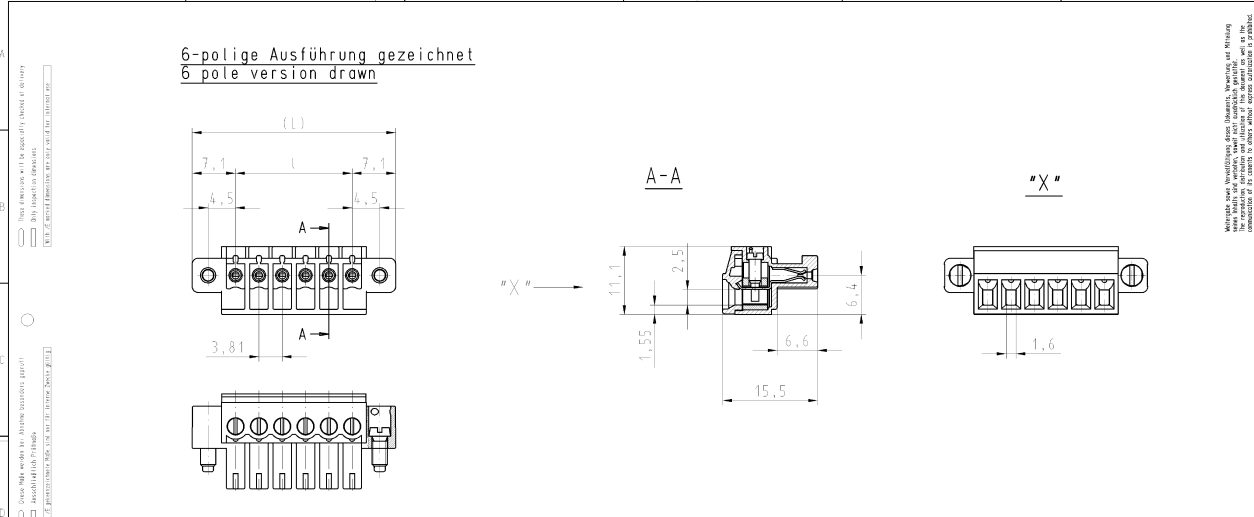
Section traversante norme UL	30-16 AWG
Tension UL	300 V
Câblage actuel	8 A
Câblage d'usine actuelle	8 A
Section traversante norme CSA	22-14 AWG
Tension CSA	300 V
CSA actuel	5 A

Autre

Type de matériau d'isolation	Thermo-plastique
Couleur	gris
hauteur	11,1 mm
Longueur	59,92 mm
profondeur	15,5 mm
matière Vis de fixation	Acier
matière de base de contact	CuSn
matière surface de contact	Sn

Dessin technique

6-polige Ausführung gezeichnet
6 pole version drawn



Artikel-Nr. part-no.	Pol- zahl/ pole	L	I	Typ type
25.621.3253.F	2	18.01	3.81	8813 B / 2 F 08
25.621.3353.F	3	21.82	7.62	8813 B / 3 F 08
25.621.3453.F	4	25.63	11.43	8813 B / 4 F 08
25.621.3553.F	5	29.44	15.24	8813 B / 5 F 08
25.621.3653.F	6	33.25	19.05	8813 B / 6 F 08
25.621.3753.F	7	37.06	22.86	8813 B / 7 F 08
25.621.3853.F	8	40.87	26.67	8813 B / 8 F 08
25.621.3953.F	9	44.68	30.48	8813 B / 9 F 08
25.621.4053.F	10	48.49	34.29	8813 B / 10 F 08
25.621.4153.F	11	52.30	38.10	8813 B / 11 F 08
25.621.4253.F	12	56.11	41.91	8813 B / 12 F 08
25.621.4353.F	13	59.92	45.72	8813 B / 13 F 08
25.621.4453.F	14	63.73	49.53	8813 B / 14 F 08
25.621.4553.F	15	67.54	53.34	8813 B / 15 F 08
25.621.4653.F	16	71.35	57.15	8813 B / 16 F 08
25.621.4753.F	17	75.16	60.96	8813 B / 17 F 08
25.621.4853.F	18	78.97	64.77	8813 B / 18 F 08
25.621.4953.F	19	82.78	68.58	8813 B / 19 F 08
25.621.5053.F	20	86.59	72.39	8813 B / 20 F 08

.F	Farbe/colour	
.0	grau/grey	
.1	schwarz/black	
.7	grün/green	

Weitere Daten siehe Katalog
further data see catalog

Zeichnung nach DIN 7517/Technical system acc. to DIN 7517. This DIN-standard describes the envelope principle. According to the envelope principle the deviations of form and position are limited by the size tolerances.		Zeichnung nach DIN 7517/Technical system acc. to DIN 7517. This DIN-standard describes the envelope principle. According to the envelope principle the deviations of form and position are limited by the size tolerances.	
Zeichnung nach DIN 7517/Technical system acc. to DIN 7517. This DIN-standard describes the envelope principle. According to the envelope principle the deviations of form and position are limited by the size tolerances.		Zeichnung nach DIN 7517/Technical system acc. to DIN 7517. This DIN-standard describes the envelope principle. According to the envelope principle the deviations of form and position are limited by the size tolerances.	
Zeichnung nach DIN 7517/Technical system acc. to DIN 7517. This DIN-standard describes the envelope principle. According to the envelope principle the deviations of form and position are limited by the size tolerances.		Zeichnung nach DIN 7517/Technical system acc. to DIN 7517. This DIN-standard describes the envelope principle. According to the envelope principle the deviations of form and position are limited by the size tolerances.	
Zeichnung nach DIN 7517/Technical system acc. to DIN 7517. This DIN-standard describes the envelope principle. According to the envelope principle the deviations of form and position are limited by the size tolerances.		Zeichnung nach DIN 7517/Technical system acc. to DIN 7517. This DIN-standard describes the envelope principle. According to the envelope principle the deviations of form and position are limited by the size tolerances.	

Werkstoff/Material	2008	Tag/Date	Name	Zeichnung Nr./Drawing No.	Index
2:1		11.07.	Schmitt J.	T	25.621.3253.0 01K
Made in mm/Dimensions are in mm					
wieland Elektrotechnik Herblichingen			Ersatz für/Replacement for: - Bezeichnung/Title LP_STECKKLEMME mit Steck-u. Schraubanschluß, Bastermaß/pitch 3,81 Pluggable PCB-terminal, rising cage clamp system		