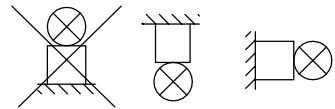
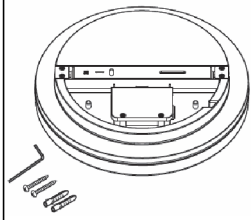


OBLO'
(**) 100-240Vac

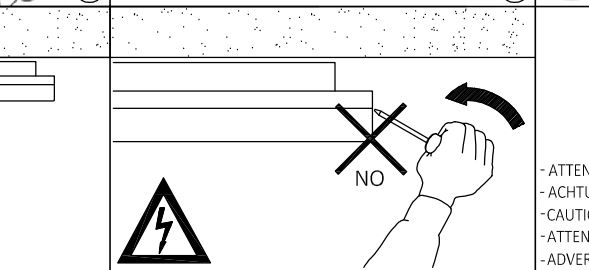
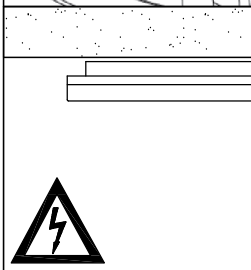
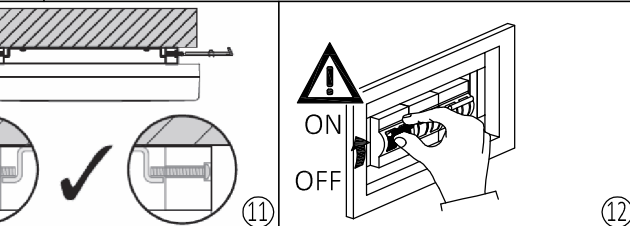
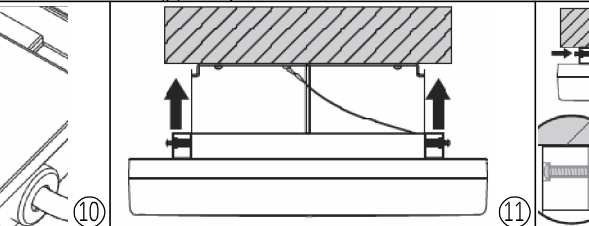
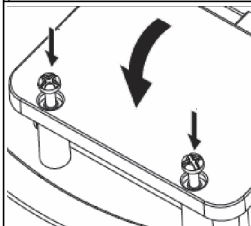
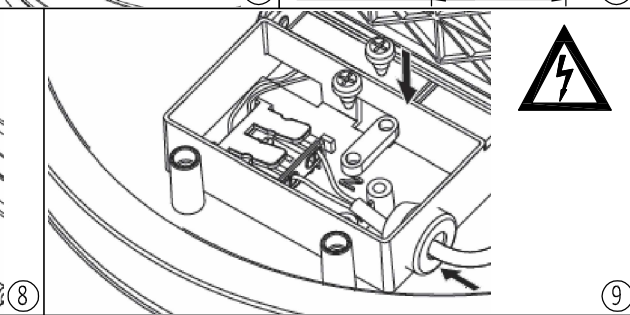
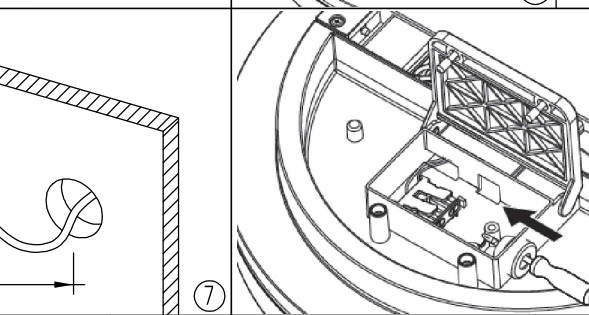
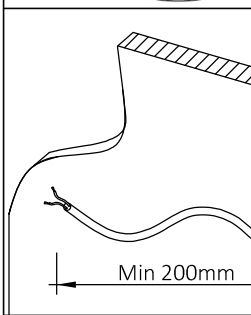
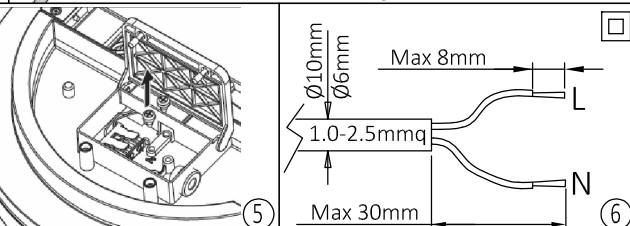
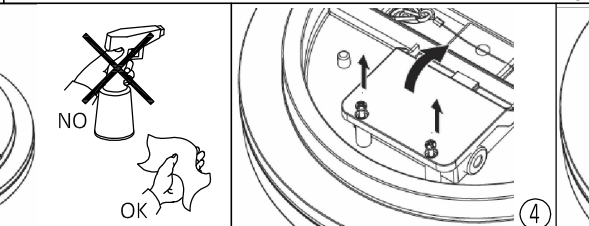
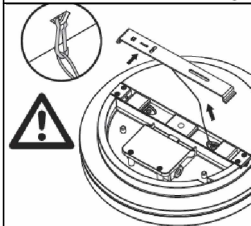
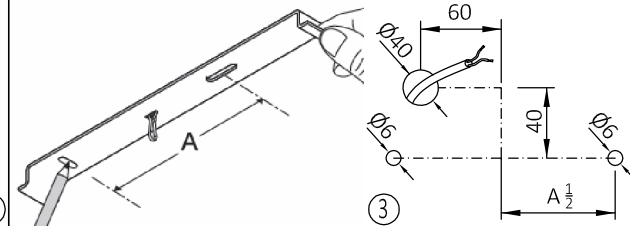
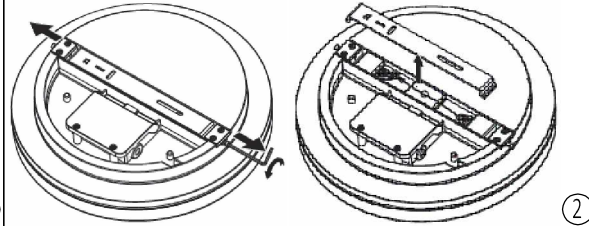
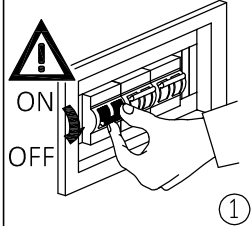
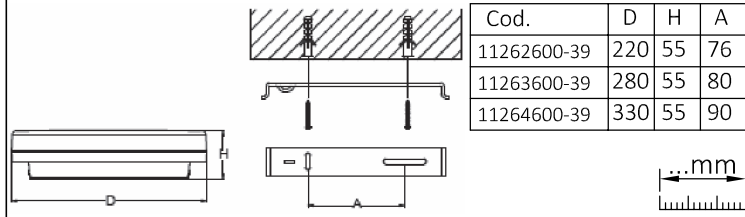


● OBLO' (DSR LED) CL II IP65 2700/3500K = Risk Group 0
○ OBLO' (DSR LED) CL II IP65 4000K = Risk Group 1



1.0 Kg

Peso max - Max weight
Poids max - Höchstgewicht
Peso máx - Peso máx
Мак. вес - Waga max



ATTENZIONE! I tasselli di fissaggio della base e la superficie su cui viene montata devono garantire una adeguata tenuta dei carichi applicati.

ATTENTION! Both the base anchors and the surface where the base will be mounted must be strong enough to support the loads applied.

ATTENTION! Les chevilles de fixation de la potère et la surface sur laquelle elle est montée doivent garantir une tenue compatible avec les charges appliquées.

ACHTUNG! Die Befestigungsdübel der Basis und die Oberfläche, auf der sie montiert wird müssen über eine ausreichende Haltung der aufgesetzten Lasten verfügen.

¡ATENCIÓN! Los tacos de fijación de la regleta y la superficie sobre la que se monta tienen que garantizar una resistencia adecuada a las cargas aplicadas.

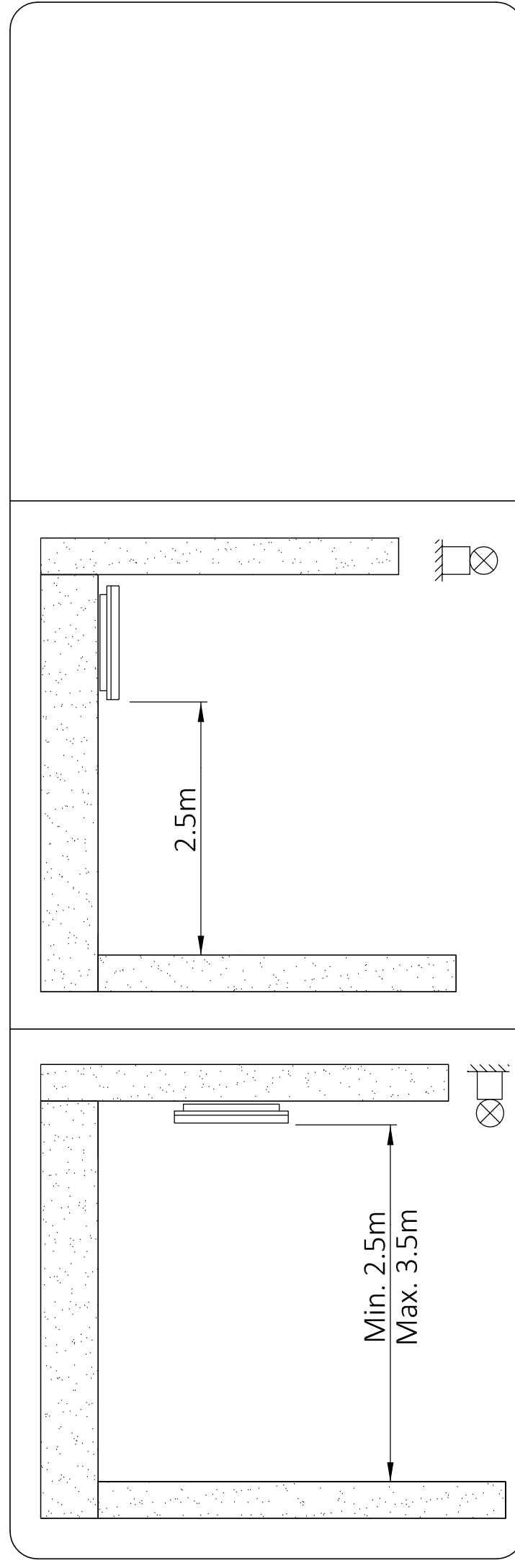
ATENÇÃO! As buchas de fixação da base e a superfície na qual é montada devem garantir uma adequada resistência das cargas aplicadas.

ВНИМАНИЕ! Крепежные вкладыши основания и поверхность, на которую оно монтируется, должны соответствовать нагрузкам.

UWAGA! Kotki mocujące podstawkę oraz powierzchnia, na której jest montowana, muszą gwarantować odpowiednią wytrzymałość na obciążenia.

- ATTENZIONE, SCOSSA ELETTRICA.
- ACHTUNG, ES BESTEHT DIE GEFAHR DES ELEKTRISCHEN SCHLAGES.
- CAUTION, ELECTRIC SHOCK.
- ATTENTION, DÉCHARGES ÉLECTRIQUES.
- ADVERTENCIA, DESCARGA ELÉCTRICA.

- L'INSTALLAZIONE PUO' RICHIEDERE L'INTERVENTO DI PERSONALE QUALIFICATO.
- THE AID OF QUALIFIED PERSONNEL MAY BE REQUIRED FOR INSTALLATION.
- L'INSTALLATION POURRAIT EXIGER L'INTERVENTION DE PERSONNEL QUALIFIE'.
- DIE INSTALLATION KANN DIE BETEILIGUNG VON FACHPERSONAL ERFORDERN.
- LA INSTALACION PUEDE NECESITAR LA INTERVENCION DE PERSONAL CALIFICADO.
- DURANTE A INSTALAÇÃO PODE SER NECESSÁRIA A INTERVENÇÃO DE PESSOAL QUALIFICADO.
- INSTALACJI POWINIEN DOKONAĆ WYKWAŁIFIKOWANY PERSONEL.
- ДЛЯ УСТАНОВКИ МОЖЕТ ПОТРЕБОВАТЬСЯ КВАЛИФИЦИРОВАННЫЙ ПЕРСОНАЛ



OBLO' Radar Sensor

(**) 220-240Vac

1 2 3 4 5 6

● 100%
● 75%
○ 50%
○ 25%

Detection area

● Switch UP
○ Switch DOWN

3 4 5 6

● 5s
● 90s
○ 5min
○ 15min

Hold-time

5 6

● disable
● 2 Lux
○ 10 Lux
○ 50 Lux

Daylight threshold

Detection area means detection coverage. It can be adjusted by combining DIP switches for specific application.

Hold-time means the time period the light will be ON after the last detection.

Daylight sensor priorit to motion sensor. Set threshold for specific needs. If disable, only motion sensor works.

●● 100%

●○ 75%

○● 50%

○○ 25%

Detection area means detection coverage. It can be adjusted by combining DIP switches for specific application.

A100_02