

Guaranteed Performance Beyond the Standards TX5500™ UTP Copper Cabling Systems

Panduit™ TX5500™ UTP Copper Cabling Systems are designed for optimum network performance, design flexibility and reliability to protect network investments well into the future. Each system provides users with headroom assurance that will exceed ANSI/TIA-568-C.2 Category 5e and ISO 11801 Edition 2.1 Class D standards for the following key electrical parameters: Insertion Loss (IL), Near-End Crosstalk (NEXT), Power Sum NEXT, ACR-N, Power Sum ACR-N, ACR-F, Power Sum ACR-F and Return Loss.

The design of the horizontal and patch cable utilizes technology and advanced connector compensation techniques developed by Panduit to achieve channel bandwidth performance above industry standard requirements. The innovative design reduces the weight and diameter of Category 5e UTP cabling, improving pathway capacity and resulting in improved airflow through dense data center enclosures and enterprise pathways without compromising performance.

The superior Bit Error Rate (BER) of the Panduit solution means a lower Packet Error Rate (PER) for your network. This means fewer packets need to be retransmitted, conserving valuable network bandwidth.

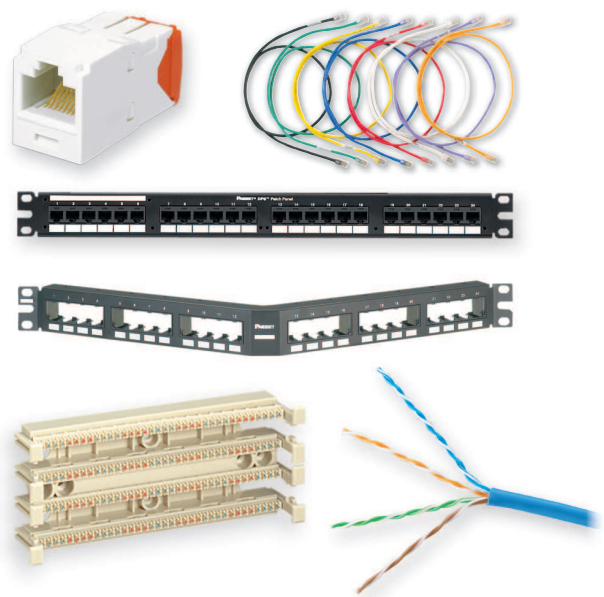
To determine the guaranteed headroom performance, over 100 channels were constructed, tested, and analyzed.

- These channels consisted of three and four connector topologies – in both short and long cabling runs – to ensure true worst-case conditions
- Testing was conducted at swept frequencies from 1 MHz to 100 MHz per industry standards
- The testing represents “real world” conditions through the use of an industry recognized hand-held tester, not test analyzers or computer models

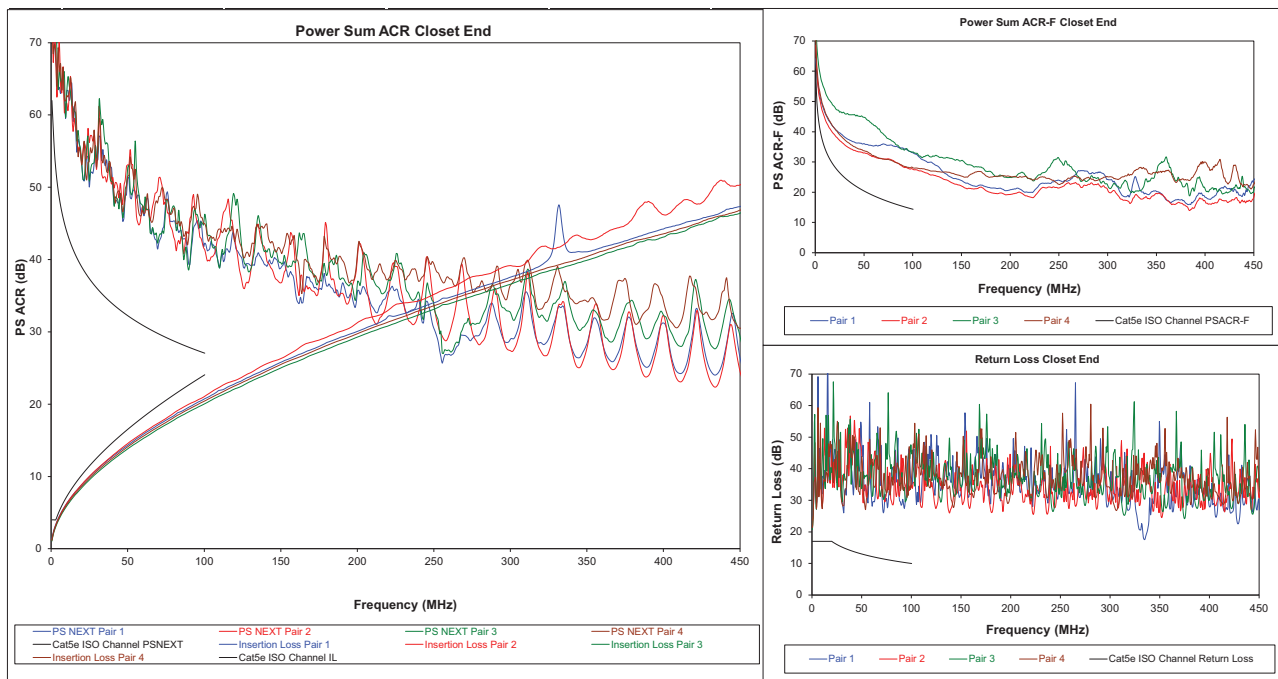
Applies only to cable manufactured on or after May 1, 2013.

Guaranteed Channel Headroom	
Electrical Value	Over Standard (dB*)
Insertion Loss	5.0%
NEXT	3.0 dB
PSNEXT	6.5 dB
ACR-N	4.5 dB
PSACR-N	8.0 dB
ACR-F	4.0 dB
PSACR-F	4.5 dB
Return Loss	2.0 dB

*Electrical values above are specified standards and consist of worst pair margin per ANSI/TIA-568-C.2 Category 5e and ISO 11801 Edition 2.1 Class D standards.



Electrical Channel Performance Data



TX5500™ Solution Components

Description		TX5500™ UTP Copper Cabling System (100 meter)	
Copper Cable			
CM		PUC5504**Y	
LSZH (IEC 60332-1)		PUL5504**-EY, PUL5504**Y	
CMR		PUR5504^^Y	
Patch Cords			
CM		UTPCH^MY	
LSZH		UTPCHL^MY	
Jack Module			
UTP		CJ5E88TGIW*	
Patch Panels		Punchdown	Modular
24-port, Angled, 1 RU		DPA245E88TGY	CPPA24FMWBLY
48-port, Angled, 2 RU		DPA485E88TGY	CPPA48FMWBLY
24-port, Flat, 1 RU		DP245E88TGY	CPP24FMWBLY
48-port, Flat, 2 RU		DP485E88TGY	CPP48FMWBLY
Punchdown System			
Punchdown termination kit		P110KB1004Y	
<p>**Available in Blue (BU) or International Gray (IG), Orange (OR), Red (RD), Violet (VL), White (WH) and Yellow (YL). ^^Available in Blue (BU), International Gray (IG) or White (WH). ^Patch cords are available in a variety of colors and lengths (feet and meters). Visit www.panduit.com or contact customer service for additional information. *Available in standard colors IW (Off White), EI (Electric Ivory), WH (White), AW (Arctic White), IG (International Gray), BL (Black), BU (Blue), RD (Red), YL (Yellow), GR (Green), OR (Orange) and VL (Violet).</p>			

For a copy of the Panduit warranty, visit www.panduit.com/warranty.