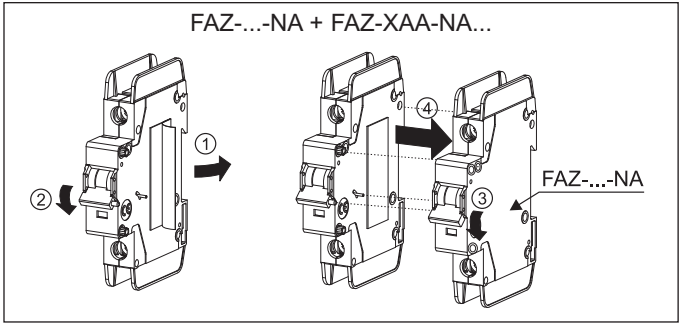
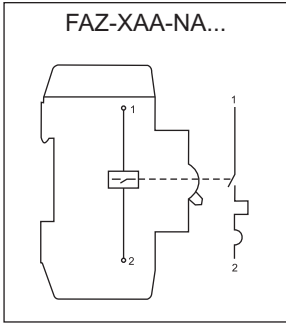


FAZ-XAA-NA...



Cu only mm ²					
	AWG				
1 x 1 - 6	1 x #18 - #10	12 mm (.50")	Z2	1.0 x 6.5 mm (.040 x .25 in)	2.8 Nm (25 lb-in)
2 x 1 - 2 x 6	2 x #18 - 2 x #10				

Allowable Combinations and Positions
 Combinaisons et Positions Possible
 Zulässige Kombinationen und Positionen
 Combinazioni e Posizioni Accettabili
 Combinaciones y Posiciones Válidas

Z-NHK + FAZ-XAA-NA... + FAZ-...-NA