

P-30 STRIP LED

105840.01

novalux
ITALIAN LIGHTING DESIGN SINCE 1948



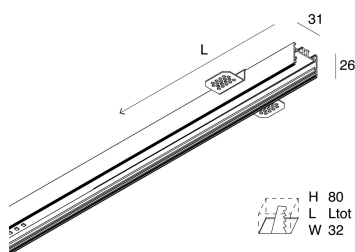
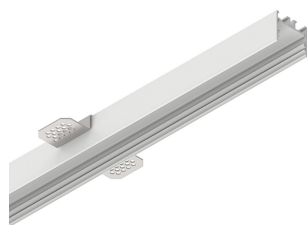
Features

Use: Indoor
Type of installation: RECESSED INTO PLASTERBOARD
Emission: DIRECT
Colour: WHITE
L: 2400mm
A: 31mm
H: 31mm
Made in: ITALY
Warranty: 5 years
Weight: 1.55kg

Tech data

IP: 40

[View more product info](#)



Novalux S.r.l. via Marzabotto, 2 40050 Funo di Argelato (BO) Italy
Tel: +39 051 860558 · Fax +39 051 6647859 · Mail: info@novalux.it · VAT number 00536541204 · novalux.com
Company subject to the management and coordination by SLV GmbH

This technical data sheet is owned by Novalux S.r.l., all rights reserved. Novalux S.r.l. reserves the right to make changes without prior notice.

P-30 STRIP LED

105840.01

novalux

ITALIAN LIGHTING DESIGN SINCE 1948

SCREENS



P-30: DIFF. OPALE PER L2400

103314.99



P-30: DIFF. OPALE L=6500

103315.99



P-30: DIFF. ANGOLO L DX+SX 119MM

103330.99



P-30: DIFF. ANGOLO T LATO LUNGO+CORTO

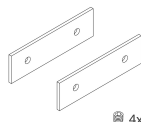
103334.99

COMPLETION ACCESSORIES



P-30: COPPIA TESTATE STRIP/INCASSO BIA

103316.01



KIT GIUNZIONE MODULI P-30/LUCKY MINI

103317.99



Novalux S.r.l. via Marzabotto, 2 40050 Funo di Argelato (BO) Italy
Tel: +39 051 860558 · Fax +39 051 6647859 · Mail: info@novalux.it · VAT number 00536541204 · novalux.com
Company subject to the management and coordination by SLV GmbH

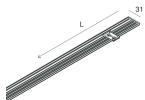
This technical data sheet is owned by Novalux S.r.l., all rights reserved. Novalux S.r.l. reserves the right to make changes without prior notice.

P-30 STRIP LED

105840.01

novalux

ITALIAN LIGHTING DESIGN SINCE 1948



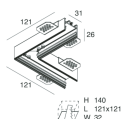
P-30: COVER CON MOLLE BIA L=2400

103325.01



P-30: KIT MOLLA PER COVER

103326.99



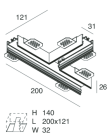
P-30: ANGOLO L INCASSO BIANCO

103328.01



P-30: COVER ANGOLO L BIANCO

103329.01



P-30: ANGOLO T INCASSO BIANCO

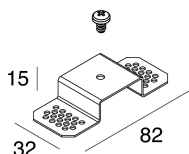
103332.01



P-30: COVER ANGOLO T BIANCO

103333.01

MOUNTING ACCESSORIES



P-30: KIT STAFFA PER INCASSO

103359.99



Novalux S.r.l. via Marzabotto, 2 40050 Funo di Argelato (BO) Italy
Tel: +39 051 860558 · Fax +39 051 6647859 · Mail: info@novalux.it · VAT number 00536541204 · novalux.com
Company subject to the management and coordination by SLV GmbH

This technical data sheet is owned by Novalux S.r.l., all rights reserved. Novalux S.r.l. reserves the right to make changes without prior notice.