

DIGITUS[®] 483 mm (19") Wall Mounting Cabinet Unique Series



✓ 1.1 - 1.5 strong sheet steel

✓ Safety class IP 20

✓ Available in color grey and black

✓ Large range of equipment available

Abstract

DIGITUS[®] 483 mm (19") Wall Mounting Cabinets, 600 mm width - 450 mm, 600 mm depth

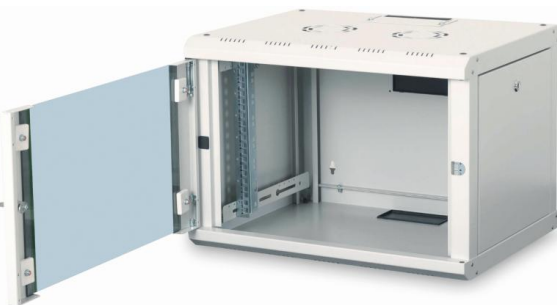
Features

- Safety class rating IP20
- Lockable safety-glass door with steel frame
- 210° door opening angle
- 1-point-locking-mechanism on the front door
- Side panels are lockable and removable
- 483 mm (19") profile rails mounted on the front side inside of the cabinet, galvanized
- 600 mm depth cabinets with 483 mm (19") profile rails on the front- and rear side
- 483 mm (19") profile rails are adjustable in depth and with height unit marking
- Load capacity of 483 mm (19") profile rails: 100 kg
- 1.1 - 1.5 strong sheet steel with a high loading capacity, powder coated
- Cable entry on the rear side and bottom with plastic cover and top with sliding cover
- Roof is prepared for fan units (punched out entries)
- Ventilation slots for active and passive ventilation and exhausting
- Standard color: Grey (RAL 7035) and black (RAL 9005)
- Extensive range of equipment available

Product Overview

The Wall Mounting Cabinets of the Unique Series are made of a robust sheet steel construction with a minimum of seams. The side sections are detachable and lockable. It is fast and easy to mount the cabinet. Separately leveling feet or castors are available. Due to their flexibility the cabinets are ideal for all current IT and telecommunication applications.

Product Images



Assmann Electronic GmbH, Auf dem Schüffel 3, 58513 Lüdenscheid, Germany, info@assmann.com, printing errors, falsities and technical changes remain reserved

Logistic Information

Height units (U)	Height in mm	Width x Depth in mm	Net weight in kg
7U	420 mm	600x450 mm	17 kg
		600x600 mm	19 kg
9U	509 mm	600x450 mm	20 kg
		600x600 mm	23 kg
12U	643 mm	600x450 mm	25 kg
		600x600 mm	30 kg
16U	820 mm	600x450 mm	31 kg
		600x600 mm	37 kg
20U	998 mm	600x450 mm	35 kg
		600x600 mm	40 kg

Product Number Information

Wall Mounting Cabinets | 600 mm width - 450 mm depth

DN-19 07-U	DIGITUS® 7U wall mounting cabinet, 420x600x450 mm, color grey (RAL 7035)
DN-19 09-U	DIGITUS® 9U wall mounting cabinet, 509x600x450 mm, color grey (RAL 7035)
DN-19 12-U	DIGITUS® 12U wall mounting cabinet, 643x600x450 mm, color grey (RAL 7035)
DN-19 16-U	DIGITUS® 16U wall mounting cabinet, 820x600x450 mm, color grey (RAL 7035)
DN-19 20-U	DIGITUS® 20U wall mounting cabinet, 998x600x450 mm, color grey (RAL 7035)

DN-19 07-U-SW	DIGITUS® 7U wall mounting cabinet, 420x600x450 mm, color black (RAL 9005)
DN-19 09-U-SW	DIGITUS® 9U wall mounting cabinet, 509x600x450 mm, color black (RAL 9005)
DN-19 12-U-SW	DIGITUS® 12U wall mounting cabinet, 643x600x450 mm, color black (RAL 9005)
DN-19 16-U-SW	DIGITUS® 16U wall mounting cabinet, 820x600x450 mm, color black (RAL 9005)
DN-19 20-U-SW	DIGITUS® 20U wall mounting cabinet, 998x600x450 mm, color black (RAL 9005)

Wall Mounting Cabinets | 600 mm width - 600 mm depth

DN-19 07U-6/6	DIGITUS® 7U wall mounting cabinet, 420x600x600 mm, color grey (RAL 7035)
DN-19 09U-6/6	DIGITUS® 9U wall mounting cabinet, 509x600x600 mm, color grey (RAL 7035)
DN-19 12U-6/6	DIGITUS® 12U wall mounting cabinet, 643x600x600 mm, color grey (RAL 7035)
DN-19 16U-6/6	DIGITUS® 16U wall mounting cabinet, 820x600x600 mm, color grey (RAL 7035)
DN-19 20U-6/6	DIGITUS® 20U wall mounting cabinet, 998x600x600 mm, color grey (RAL 7035)

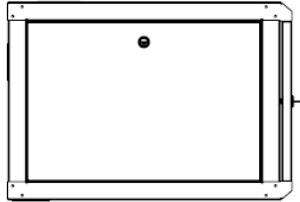
DN-19 07U-6/6-SW	DIGITUS® 7U wall mounting cabinet, 420x600x600 mm, color black (RAL 9005)
DN-19 09U-6/6-SW	DIGITUS® 9U wall mounting cabinet, 509x600x600 mm, color black (RAL 9005)
DN-19 12U-6/6-SW	DIGITUS® 12U wall mounting cabinet, 643x600x600 mm, color black (RAL 9005)
DN-19 16U-6/6-SW	DIGITUS® 16U wall mounting cabinet, 820x600x600 mm, color black (RAL 9005)
DN-19 20U-6/6-SW	DIGITUS® 20U wall mounting cabinet, 998x600x600 mm, color black (RAL 9005)

Technical Drawings

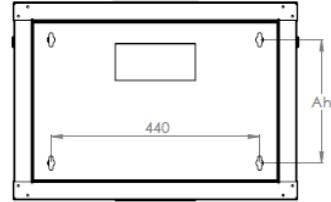
Wall Mounting Cabinets - 600 mm width x 600 mm depth



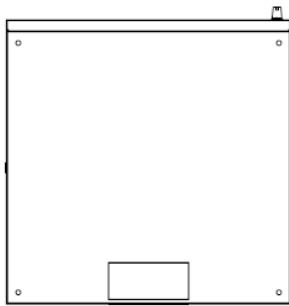
FRONT VIEW



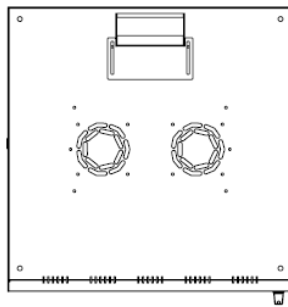
SIDE VIEW



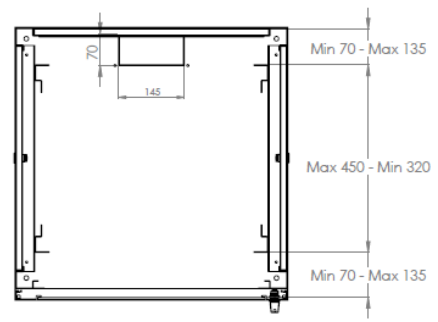
REAR VIEW



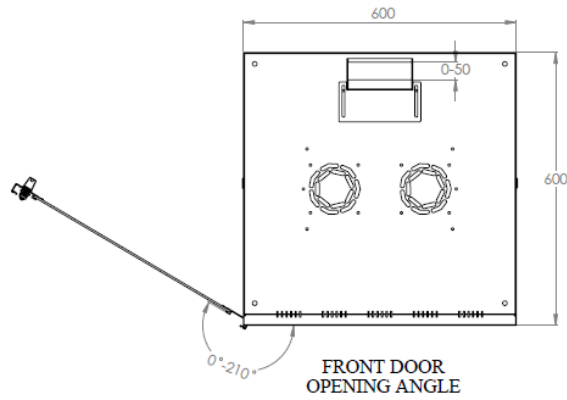
BOTTOM VIEW



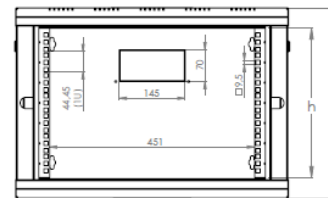
TOP VIEW



MAX/STD/MIN EQUIPMENT
MOUNTING DISTANCE



FRONT DOOR
OPENING ANGLE



DIMENSIONS IN
WIDTH AND HEIGHT