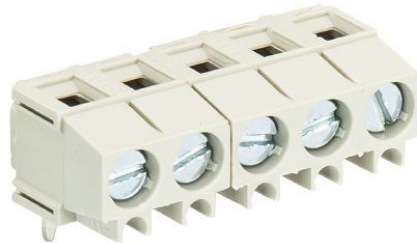


Fiche produit

Article n° 25.192.1853.0

Circuit imprimé terminale 8292 / 18



Article n°	25.192.1853.0
EAN	4015573179103
Unité de commande	50 Piece(s)

certificats/approbations



Données techniques

général

Espacement modulaire	5,08 mm
Type de connexion	Connexion à vis
processus de soudure	soudage vague
Répartiteur compact	boîte
Nombre de pôles	18
nombre de niveaux	1
Prise de test intégrée	Oui
goupilles de retenue	Aucun
Marquage	Oui

Données techniques

Section transversale nominale	1,5 mm ²
Courant nominal	10 A
Catégorie de surtension I	1000 V
Catégorie de surtension II	690 V
Catégorie de surtension III	250 V
Tension nominale d'impulsion	4 kV
longueur de fil	6 mm

données de connection

Section minimum fil rigide	0,14 mm ²
Section maximum fil rigide	2,5 mm ²
Section minimum multi-brins	0,14 mm ²
Section maximum multi-brins	1,5 mm ²
longueur de fil	6 mm

Données techniques UL/CSA

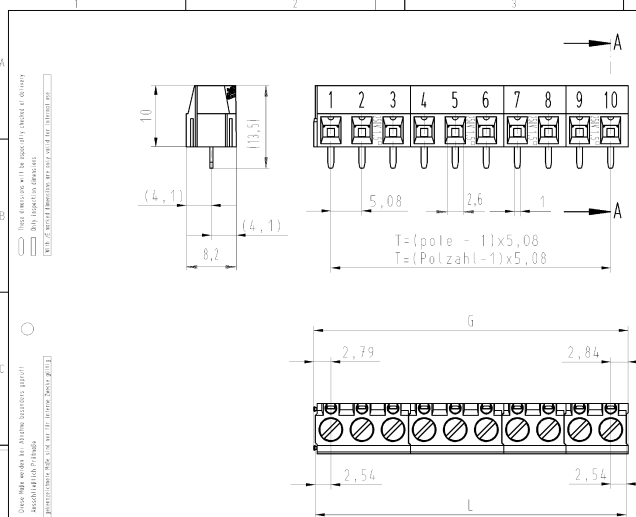
Section traversante norme UL	30-14 AWG
Tension UL	300 V
Câblage actuel	15 A
Câblage d'usine actuelle	16 A
Section traversante norme CSA	30-14 AWG

Tension CSA	300 V
CSA actuel	15 A

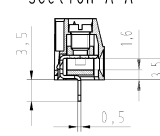
Autre

Type de matériau d'isolation	Thermo-plastique
Couleur	gris
hauteur	10 mm
profondeur	8,2 mm
matière Vis de fixation	Acier
matière de base de contact	CuSn
matière surface de contact	Sn

Dessin technique



Schnitt A-A
section A-A



gezeichnete Ausführung
10-polig
drawn version
10-poles
25.193.1053.0

.F	Farbe: colour:	Brennverhalten flame resistance
.0	grau / grey Bedruckung: schwarz printing: black	UL 94/V-0
.1	schwarz / black Bedruckung: weiß printing: white	UL 94/V-0
.7	grün / green Bedruckung: schwarz printing: black	UL 94/V-2

Teile-Nr. part -Nr.	Typ type	Polzahl pole	T	L	G
25.193.2453.F	8292/24	24	116,84	121,92	122,47
25.193.2253.F	8292/23	23	111,76	116,84	117,39
25.193.2253.F	8292/22	22	106,68	111,76	112,31
25.193.2153.F	8292/21	21	101,60	106,68	107,23
25.193.2053.F	8292/20	20	96,52	101,60	102,15
25.193.1953.F	8292/19	19	91,44	96,52	97,07
25.193.1853.F	8292/18	18	86,36	91,44	91,99
25.193.1753.F	8292/17	17	81,28	86,36	86,91
25.193.1653.F	8292/16	16	76,20	81,28	81,83
25.193.1553.F	8292/15	15	71,12	76,20	76,75
25.193.1453.F	8292/14	14	66,04	71,12	71,67
25.193.1353.F	8292/13	13	60,96	66,04	66,59
25.193.1253.F	8292/12	12	55,88	60,96	61,51
25.193.1153.F	8292/11	11	50,80	55,88	56,43
25.193.1053.F	8292/10	10	45,72	50,80	51,35
25.193.0953.F	8292/9	9	40,64	45,72	46,27
25.193.0853.F	8292/8	8	35,56	40,64	41,19
25.193.0753.F	8292/7	7	30,48	35,56	36,11
25.193.0653.F	8292/6	6	25,40	30,48	31,03
25.193.0553.F	8292/5	5	20,32	25,40	25,95
25.193.0453.F	8292/4	4	15,24	20,32	20,87
25.193.0353.F	8292/3	3	10,16	15,24	15,79
25.193.0253.F	8292/2	2	5,08	10,16	10,71

Zeichnung nach DIN 7107/Tolerance system acc. to DIN 7107. This DIN-standard describes the envelope principle. According to the envelope principle the deviations of form and position are limited by the size tolerance.		Zeichnung nach DIN 7107/Tolerance system acc. to DIN 7107. This DIN-standard describes the envelope principle. According to the envelope principle the deviations of form and position are limited by the size tolerance.	
Zeichnung nach DIN 7107/Tolerance system acc. to DIN 7107. This DIN-standard describes the envelope principle. According to the envelope principle the deviations of form and position are limited by the size tolerance.	Zeichnung nach DIN 7107/Tolerance system acc. to DIN 7107. This DIN-standard describes the envelope principle. According to the envelope principle the deviations of form and position are limited by the size tolerance.	Zeichnung nach DIN 7107/Tolerance system acc. to DIN 7107. This DIN-standard describes the envelope principle. According to the envelope principle the deviations of form and position are limited by the size tolerance.	Zeichnung nach DIN 7107/Tolerance system acc. to DIN 7107. This DIN-standard describes the envelope principle. According to the envelope principle the deviations of form and position are limited by the size tolerance.
Zeichnung nach DIN 7107/Tolerance system acc. to DIN 7107. This DIN-standard describes the envelope principle. According to the envelope principle the deviations of form and position are limited by the size tolerance.	Zeichnung nach DIN 7107/Tolerance system acc. to DIN 7107. This DIN-standard describes the envelope principle. According to the envelope principle the deviations of form and position are limited by the size tolerance.	Zeichnung nach DIN 7107/Tolerance system acc. to DIN 7107. This DIN-standard describes the envelope principle. According to the envelope principle the deviations of form and position are limited by the size tolerance.	Zeichnung nach DIN 7107/Tolerance system acc. to DIN 7107. This DIN-standard describes the envelope principle. According to the envelope principle the deviations of form and position are limited by the size tolerance.

Zeichnung nach DIN 7107/Tolerance system acc. to DIN 7107. This DIN-standard describes the envelope principle. According to the envelope principle the deviations of form and position are limited by the size tolerance.	Zeichnung nach DIN 7107/Tolerance system acc. to DIN 7107. This DIN-standard describes the envelope principle. According to the envelope principle the deviations of form and position are limited by the size tolerance.	Zeichnung nach DIN 7107/Tolerance system acc. to DIN 7107. This DIN-standard describes the envelope principle. According to the envelope principle the deviations of form and position are limited by the size tolerance.	Zeichnung nach DIN 7107/Tolerance system acc. to DIN 7107. This DIN-standard describes the envelope principle. According to the envelope principle the deviations of form and position are limited by the size tolerance.
Zeichnung nach DIN 7107/Tolerance system acc. to DIN 7107. This DIN-standard describes the envelope principle. According to the envelope principle the deviations of form and position are limited by the size tolerance.	Zeichnung nach DIN 7107/Tolerance system acc. to DIN 7107. This DIN-standard describes the envelope principle. According to the envelope principle the deviations of form and position are limited by the size tolerance.	Zeichnung nach DIN 7107/Tolerance system acc. to DIN 7107. This DIN-standard describes the envelope principle. According to the envelope principle the deviations of form and position are limited by the size tolerance.	Zeichnung nach DIN 7107/Tolerance system acc. to DIN 7107. This DIN-standard describes the envelope principle. According to the envelope principle the deviations of form and position are limited by the size tolerance.
Zeichnung nach DIN 7107/Tolerance system acc. to DIN 7107. This DIN-standard describes the envelope principle. According to the envelope principle the deviations of form and position are limited by the size tolerance.	Zeichnung nach DIN 7107/Tolerance system acc. to DIN 7107. This DIN-standard describes the envelope principle. According to the envelope principle the deviations of form and position are limited by the size tolerance.	Zeichnung nach DIN 7107/Tolerance system acc. to DIN 7107. This DIN-standard describes the envelope principle. According to the envelope principle the deviations of form and position are limited by the size tolerance.	Zeichnung nach DIN 7107/Tolerance system acc. to DIN 7107. This DIN-standard describes the envelope principle. According to the envelope principle the deviations of form and position are limited by the size tolerance.

Zeichnung nach DIN 7107/Tolerance system acc. to DIN 7107. This DIN-standard describes the envelope principle. According to the envelope principle the deviations of form and position are limited by the size tolerance.	Zeichnung nach DIN 7107/Tolerance system acc. to DIN 7107. This DIN-standard describes the envelope principle. According to the envelope principle the deviations of form and position are limited by the size tolerance.	Zeichnung nach DIN 7107/Tolerance system acc. to DIN 7107. This DIN-standard describes the envelope principle. According to the envelope principle the deviations of form and position are limited by the size tolerance.	Zeichnung nach DIN 7107/Tolerance system acc. to DIN 7107. This DIN-standard describes the envelope principle. According to the envelope principle the deviations of form and position are limited by the size tolerance.
Zeichnung nach DIN 7107/Tolerance system acc. to DIN 7107. This DIN-standard describes the envelope principle. According to the envelope principle the deviations of form and position are limited by the size tolerance.	Zeichnung nach DIN 7107/Tolerance system acc. to DIN 7107. This DIN-standard describes the envelope principle. According to the envelope principle the deviations of form and position are limited by the size tolerance.	Zeichnung nach DIN 7107/Tolerance system acc. to DIN 7107. This DIN-standard describes the envelope principle. According to the envelope principle the deviations of form and position are limited by the size tolerance.	Zeichnung nach DIN 7107/Tolerance system acc. to DIN 7107. This DIN-standard describes the envelope principle. According to the envelope principle the deviations of form and position are limited by the size tolerance.
Zeichnung nach DIN 7107/Tolerance system acc. to DIN 7107. This DIN-standard describes the envelope principle. According to the envelope principle the deviations of form and position are limited by the size tolerance.	Zeichnung nach DIN 7107/Tolerance system acc. to DIN 7107. This DIN-standard describes the envelope principle. According to the envelope principle the deviations of form and position are limited by the size tolerance.	Zeichnung nach DIN 7107/Tolerance system acc. to DIN 7107. This DIN-standard describes the envelope principle. According to the envelope principle the deviations of form and position are limited by the size tolerance.	Zeichnung nach DIN 7107/Tolerance system acc. to DIN 7107. This DIN-standard describes the envelope principle. According to the envelope principle the deviations of form and position are limited by the size tolerance.