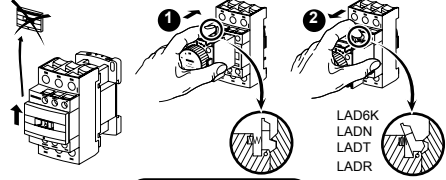
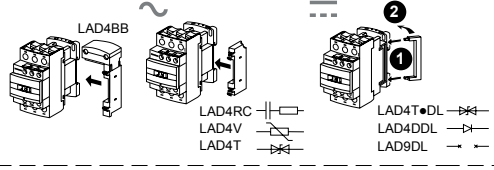


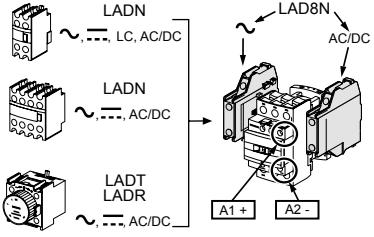
Schneider Electric Industries SAS www.schneider-electric.com/contact
 35, rue Joseph Monier CS 30323 W9 1378323 0211 A11
 F - 92506 Rueil Malmaison Cedex 03/2017



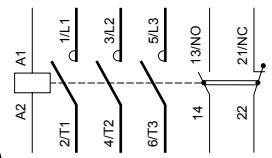
	LC1D09/ D12	LC1DT20/ DT25/ D098/D128	LC1D18	LC1D25/ D32/D38	LC1DT32/ DT40/ D188/D258	LC1D●●, LA●●
	8 mm 5/16"	12 mm 6/13"	8 mm 5/16"	10 mm 3/8"	12 mm 6/13"	8 mm 5/16"
	1...4	1...4	1.5...6	2.5...10	2.5...10	1...4
	1...4	1...4	1.5...6	2.5...10	2.5...10	1...4
	1...4	1...4	1...6	1...10	2.5...10	1...4
	1...2.5	1...2.5	1...4	1.5...6	2.5...10	1...2.5
	1...4	1...4	1.5...6	1.5...10	2.5...16	1...4
	1...4	1...4	1.5...6	2.5...10	2.5...16	1...4
AWG	10-18 CU 75°C	10-18 CU 75°C	8-18 CU 75°C	6-14 CU 75°C	8-12 CU 75°C	10-18 CU 75°C
	6 mm	6 mm	6 mm	6 mm	6 mm	6 mm
	1.7 N.m 15 lb-in	1.7 N.m 15 lb-in	1.7 N.m 15 lb-in	2.5 N.m 22 lb-in	1.8 N.m 16 lb-in	1.7 N.m 15 lb-in

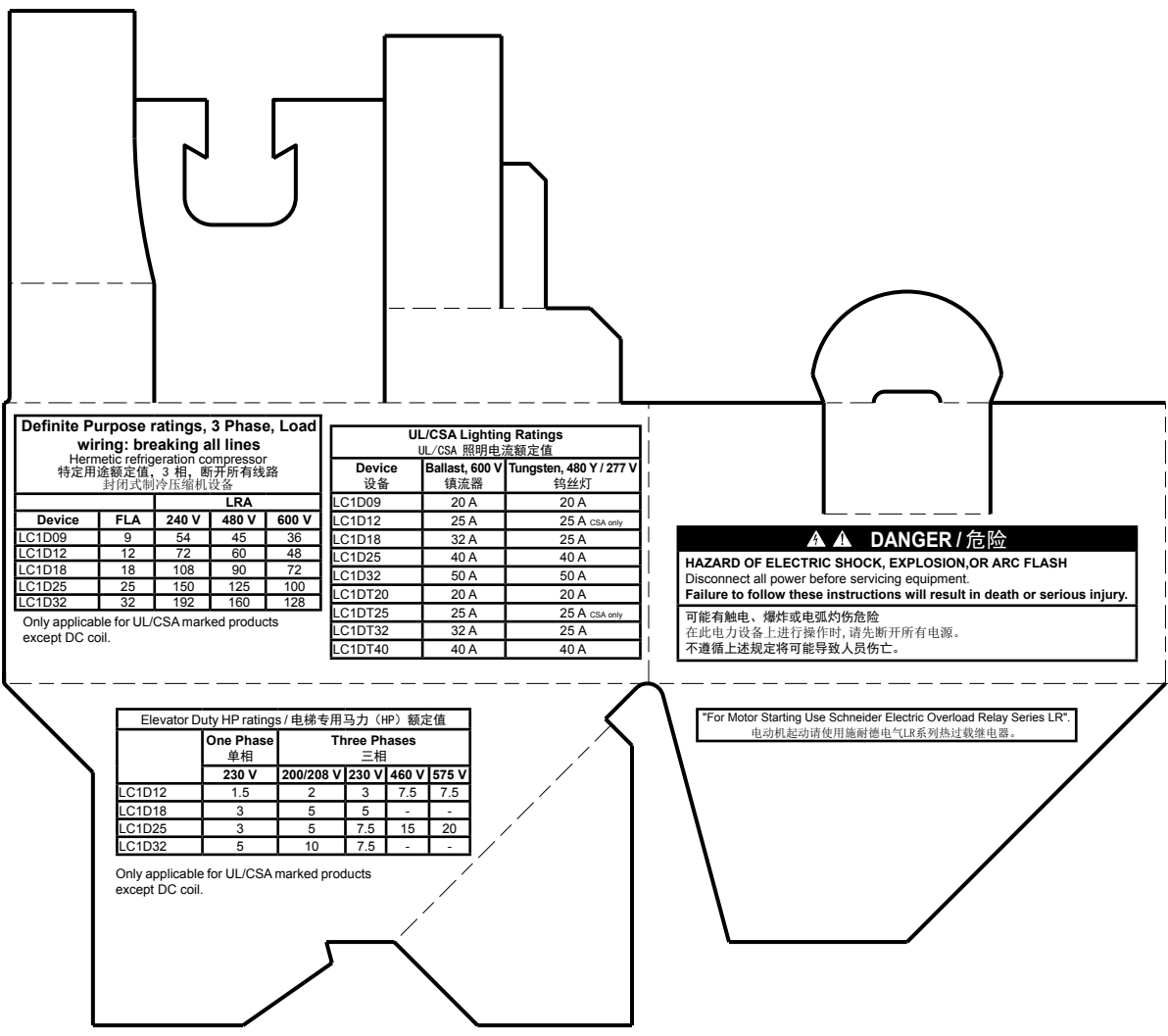


⚠️ WARNING / 警告
RISK OF FIRE OR ELECTRIC SHOCK (FOR CONTACTOR WITH UL HI-FAULT SHORT CIRCUIT CURRENT RATINGS ONLY)
 ■ The opening of the branch-circuit protective device may be an indication that a fault current has been interrupted.
 ■ To reduce the risk of fire or electric shock, current-carrying parts and the other components of the controller should be examined and replaced if damaged.
Failure to follow these instructions can result in death, serious injury, or equipment damage.
 可能有火灾或者触电的危险 (仅限UL高故障短路电流额定值的接触器)
 ■ 支路保护设备断开, 表明故障电流已被中断。
 ■ 为降低火灾或触电风险, 应检查带电部件和 其他控制元件, 如有损坏, 需及时更换。
 不遵循上述规定将可能导致人员伤亡或设备损坏。



3P AC TeSys D contactors are grade 3 (LC1D09 → LC1D18) and grade 2 (LC1D25 → LC1D38) according to GB 21518. Maximum power consumption lower than 9.5 VA.
 根据GB 21518标准, 三极 TeSys D 系列交流接触器能效等级为3级 (LC1D09 → LC1D18) 和2级 (LC1D25 → LC1D38), 产品最大吸持功率低于9.5VA。
 AC/DC: - use of this product in EMC environment B may require mitigation measures to avoid unwanted disturbance.
 - full open AC at 10%Us





Schneider Electric Industries SAS
 35, rue Joseph Monier
 CS 30323
 F - 92506 Rueil Malmaison Cedex

www.schneider-electric.com

W9 1378323 0211 A11

© 2016 Schneider Electric - All rights reserved.

2/2