

Part number

M7AP 24 S232



Surface mounting housing, V-TYPE series, with 2 levers, M32 x 2 cable entry, size "104.27", high construction, with metal cover

Product description

Product type	Surface mounting housing
Series	V-TYPE
Closing type	With 2 levers
Size	Size 104.27
Cable entry	With cable entry M32 x 2
Specification	High construction, with metal cover

Technical data

IP degree of protection IP66 / IP67 / IP69

Further technical details

Weight	571,00 g
Operating temperature range (min, max)	-40°C...+125°C

Material properties

Other materials	Lever: Stainless steel Gasket: NBR
Colour	RAL 7040 grey
RoHs conformity	Compliant
China RoHs - EFUP	E
REACH SVHC substances	No

Approvals / Standards

Certifications	DNV, BV
UL	ECBT2
cUL	ECBT8

General ordering information

EAN13 code	8015747235723
eCl@ss 8.1	27440202
ETIM 7.0	EC000437

Packaging Information

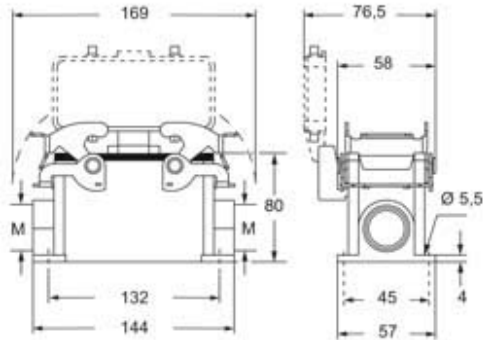
Packaging length	330,00 mm
Packaging height	230,00 mm
Packaging width	205,00 mm
Packaging weight	6,15 kg
Packaging volume	15,56 dm ³
Packaging description	Carton box
Packaging quantity	10 Pcs
Packaging EAN code	8015747249225
Sub-packaging weight	3,08 kg
Sub-packaging description	Plastic packaging
Sub-packaging quantity	5 Pcs
Sub-packaging EAN barcode	8015747235815

Part number

M7AP 24 S232



Catalogue drawings



Notes

Dimensions shown in mm are not binding and may be changed without notice.
