

GHG 263 - Ex-main current switches 40 A



GHG 263 1301 R0001



GHG 263 0048 R....

Technical data

Ex-Main current switches 40 A

Marking accd. to 2014/34/EU	⊕ II 2 G Ex de IIC T6 / ⊕ II 2 D Ex tD A21 IP66 T80 °C
EC-Type Examination Certificate	PTB 99 ATEX 1161
IECEX Certificate of Conformity	BKI 07.0012
Marking accd. to IECEx	Ex ed ia II T6 Ex tD A21 IP66 T55 °C
Permissible ambient temperature	-20 °C up to +40 °C ¹⁾
Rated voltage	up to max. 690 V
Rated current	max. 40 A
Frequency	50/60 Hz
Rated making/breaking capacity AC-3 accd. EN 60947-3	U _b 230 V / I _b 40 A U _b 400 V / I _b 40 A U _b 500 V / I _b 40 A U _b 690 V / I _b 32 A
Back-up fuse	up to 400 V AC: 80 A gG up to 500 V AC: 80 A gG up to 690 V AC: 63 A gG
Connecting terminals	main contact 2 x 16 mm ²
Protection class	I
Degree of protection accd. to EN 60529	IP66
Cable glands/enclosure drilling	M25 cable gland see ordering details M40 cable gland see ordering details Option: metal flange with thread
Weight	3-pole approx. 2.30 kg 6-pole approx. 6.50 kg
Enclosure material	glass-fibre reinforced polyester
Enclosure colour	black
Padlocking facility	can be locked in OFF position with 3 commercially available padlocks (Ø max. 6 mm)

¹⁾ Other ambient temperatures on request



GHG 263 0048 R....



GHG 263 1301 R0001

Ordering details

Content		Cable gland		Order No.
Ex-Main current switches 40 A 3-pole				
3-pole	0 - I	2 x M40, 1 x M25	ON-OFF switch	GHG 263 1301 R0001
	0 - Y - D	3 x M40, 2 x M25 screw plug	Star-delta	GHG 263 0048 R0005
	0 - I - II	3 x M40, 2 x M25 screw plug	Dahlander	GHG 263 0048 R0006
Ex-Main current switches 40 A 3-pole Version with 2 auxiliary contacts (1 NO + 1 x NC)				
3-pole	I - II	3 x M40/1 x M25, 1 x M25 screw plug	Change-over	GHG 263 0048 R0002
	I - 0 - II	2 x M40/1 x M25, 1 x M25 screw plug	Reversing switch	GHG 263 0048 R0004
Version with 2 auxiliary contacts (1 NO + 1 x NO)				
3-pole	I - 0 - II	3 x M40/1 x M25, 1 x M25 screw plug	Change-over	GHG 263 0048 R0003

Customized version on request, auxiliary contacts in Ex ia available

Accessories

Type	Application	Fixing method	Order No.
Mounting plate for Ex-Main current switches 40 A 3-pole			
Size 3	Wall mounting	snap on	GHG 610 1953 R0118
Size 3	Pipe clamp	snap on	GHG 610 1953 R0110
Size 3	Trellis-work mounting	snap on	GHG 610 1953 R0118
Mounting plate for Ex-Main current switches 40 A 6-pole			
Size 3	2 x pipe clamp	screw-on ¹⁾	GHG 610 1953 R0110

¹⁾ observe mounting distance

Type	OU	Order No.
Accessories for mounting plates		
Label holder with type label (blank) for mounting plate size 1, 2, 2A and 3	10	GHG 610 1953 R0057
Plug-in fastener for CEAG modules with 5.5 mm and 11 mm mounting feet 1 set = 4 pcs.	10	GHG 610 1953 R0041
Mounting set for pipes 1" (of 27 - 30 mm) for mounting plates with pipe fixing	10	GHG 610 1953 R0020

Type	Application	OU	Order No.
Protective canopy for mounting plate			
Size 3	for pipe mounting plate size 3 vertical	1	GHG 610 1955 R0104
Size 3A	for mounting plates wall/trellis fixing size 3 vertical	1	GHG 610 1955 R0105
Size 3B	for mounting plates pipe fixing size 3 horizontal	1	GHG 610 1955 R0106

Please pay attention that only order units (OU) according to the ordering details can be delivered.

GHG 263 - Ex-main current switches 40 A



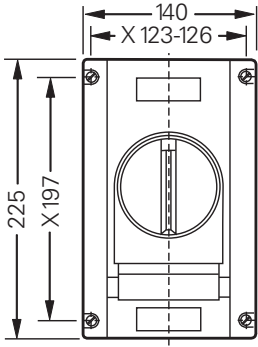
GHG 263 1301 R0001



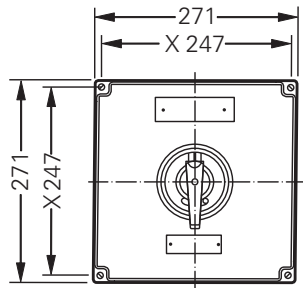
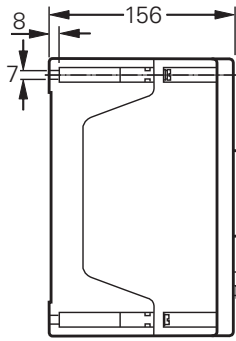
GHG 263 0048 R...

Dimension drawing

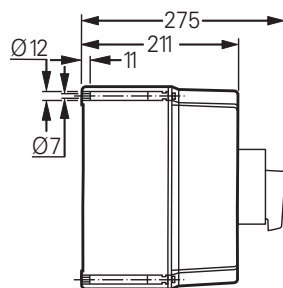
5



GHG 263 1301 R0001



GHG 263 0048 R...



X = fixing dimensions