

| | | | | |
|---|--------------------|------|-----|---|
| Product designation | | | | Rotary cam switches |
| Product type designation | | | | GF20 |
| General characteristics | | | | |
| Switching diagram | | | | 08 - ON/OFF switch 4 poles |
| N° of elements | | | | 2 |
| Mounting form | | | | U11 - Front mounting with black handle without front plate for hole diam. 22mm fixing |
| Contact characteristics | | | | |
| Rated insulation voltage U_i | IEC/EN | V | 480 | |
| | UL/CSA | V | 240 | |
| Rated impulse withstand voltage U_{imp} | | kV | 4 | |
| Conventional free air thermal current I_{th} | IEC/EN | A | 20 | |
| | UL/CSA | A | 15 | |
| Rated operational voltage | | V | 480 | |
| Rated operational impulse voltage | | kV | 4 | |
| Maximum fuse size for short-circuit protection I_n (gG) | 10kA | A | 20 | |
| | 15kA | A | 20 | |
| | 25kA | A | 20 | |
| Rated short time current I_{cw} | | | | |
| | 1s | A | 250 | |
| Conductivity | | | | 10/5 mA/V |
| Operational current I_e IEC/EN | AC1/AC21A | | | |
| | | | A | 20 |
| AC15 | 110V | A | 10 | |
| | 220/230V | A | 8 | |
| | 380/400V | A | 6 | |
| | | | | |
| Rated operational power in AC | Three-phase AC-3 | | | |
| | 220/230V | kW | 3 | |
| | 380/440V | kW | 5 | |
| | Single-phase AC-3 | | | |
| | 110V | kW | 0.5 | |
| | 220/230V | kW | 1.5 | |
| 380/440V | kW | 2 | | |
| Three-phase AC23A | 220/230V | kW | 4 | |
| | 380/440V | kW | 7.5 | |
| | | | | |
| | Single-phase AC23A | | | |
| 110V | kW | 0.75 | | |
| 220/230V | kW | 2 | | |
| 380/440V | kW | 2.5 | | |
| Rated operational current in DC | | | | |

DC21A

| | | |
|------|---|-----|
| 48V | A | 20 |
| 60V | A | 20 |
| 110V | A | 4 |
| 220V | A | 0.7 |
| 440V | A | 0.2 |

DC13

| | | |
|------|---|------|
| 24V | A | 6 |
| 48V | A | 6 |
| 60V | A | 3 |
| 110V | A | 1 |
| 220V | A | 0.4 |
| 440V | A | 0.15 |

Power dissipation

W 0.8

Mechanical features

Terminals screw

M3

Tightening torque for terminals max

Nm 0.5

Conductor size

AWG - Rigid cable

| | | |
|-----|-----|----|
| min | AWG | 20 |
| Max | AWG | 12 |

AWG - Flexible cable

| | | |
|-----|-----|----|
| min | AWG | 20 |
| Max | AWG | 12 |

Conductor size (IEC) - Flexible cable

| | | |
|-----|-----------------|-----|
| min | mm ² | 0.5 |
| Max | mm ² | 2.5 |

Conductor size (IEC) - Rigid cable

| | | |
|-----|-----------------|-----|
| min | mm ² | 0.5 |
| Max | mm ² | 2.5 |

Mechanical life

cycles 1x10⁶

UL technical data

Motor power for direct-on-line control

for three-phase motor

240V HP 3

for single-phase motor

240V HP 1

Ambient conditions

Temperature

Operating temperature

| | | |
|-----|----|-----|
| min | °C | -25 |
| max | °C | +55 |

Storage temperature

| | | |
|-----|----|-----|
| min | °C | -40 |
| max | °C | +70 |

Resistance & Protection

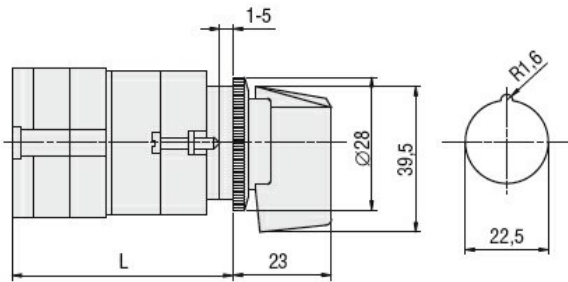
Frontal IP degree

IP40

Terminals IP degree

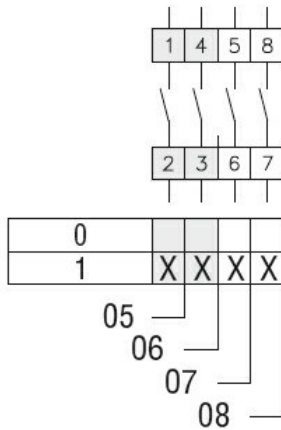
IP20

Dimensions



| Series | L | | | |
|--------|------|----|-------|-----|
| | 1 | 2 | 3...8 | |
| GF20 | 54.5 | 68 | 81.5 | 203 |

Wiring diagrams



Certifications and compliance

Compliance

CSA C22.2 n° 14
IEC/EN/BS 60947-1
IEC/EN/BS 60947-3
IEC/EN/BS 60947-5-1
UL60947-4-1

Certificates

cULus
EAC

ETIM classification

ETIM 8.0

EC001029 -
Selector switch,
complete