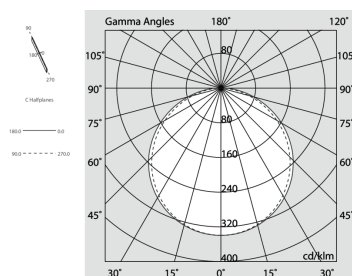
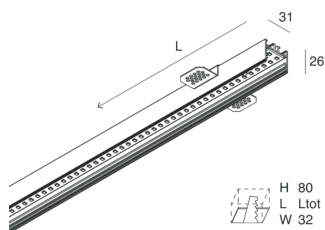
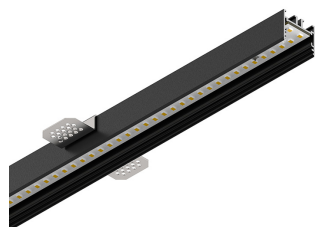


# P-30 PCB

105896.02

**novalux**  
ITALIAN LIGHTING DESIGN SINCE 1948



## Features

Use: Indoor  
Type of installation: RECESSED INTO PLASTERBOARD  
Emission: DIRECT  
Optics: OPAL  
Colour: BLACK  
Dimming: ON/OFF  
Emergency: NO  
L: 2400mm  
A: 31mm  
H: 31mm  
Made in: ITALY  
Warranty: 5 years

## Tech data

Luminaire input power: 28W  
Luminaire luminous flux: 1917lm  
IP: 40  
Insulation class: II  
Supply voltage: 0.5A alim. incluso 220-240V 50/60Hz  
SELV: Si

## Source

Light source: LED  
Source power: 24W  
Source luminous flux: 4184lm  
Colour temperature: 2700K  
CRI: >90  
Colour tolerance: 3 Step MacAdam  
LED lifespan: 50000h L80 B20

## Compliance

CEI EN 60598-1:2015 + A11:2009. IEC 60598-2:2015 2-1, 2-2

## Standards

Photobiological risk: RISK GROUP 0 Certified fixture in EXEMPT GROUP, in accordance with CEI EN 62471:2010-01, IEC TR 62778:2014.

CAM edilizia: The product complies with the requirements for public buildings, ministerial decree of 23rd June 2022 n.256.

[View more product info](#)



Novalux S.r.l. via Marzabotto, 2 40050 Funo di Argelato (BO) Italy  
Tel: +39 051 860558 · Fax +39 051 6647859 · Mail: info@novalux.it · VAT number 00536541204 · novalux.com  
Company subject to the management and coordination by SLV GmbH

This technical data sheet is owned by Novalux S.r.l., all rights reserved. Novalux S.r.l. reserves the right to make changes without prior notice.

# P-30 PCB

105896.02

**novalux**  
ITALIAN LIGHTING DESIGN SINCE 1948

## SCREENS

---



P-30: DIFF. OPALE PER L2400

**103314.99**

---



P-30: DIFF. OPALE L=6500

**103315.99**

## COMPLETION ACCESSORIES

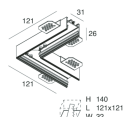
---



P-30: COPPIA TESTATE STRIP/INCASSO NERO

**103316.02**

---



P-30: ANGOLO L INCASSO NERO

**103328.02**

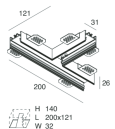
---



P-30: COVER ANGOLO L NERO

**103329.02**

---



P-30: ANGOLO T INCASSO NERO

**103332.02**

---



Novalux S.r.l. via Marzabotto, 2 40050 Funo di Argelato (BO) Italy  
Tel: +39 051 860558 · Fax +39 051 6647859 · Mail: info@novalux.it · VAT number 00536541204 · novalux.com  
Company subject to the management and coordination by SLV GmbH

This technical data sheet is owned by Novalux S.r.l., all rights reserved. Novalux S.r.l. reserves the right to make changes without prior notice.

# P-30 PCB

105896.02

**novalux**  
ITALIAN LIGHTING DESIGN SINCE 1948



P-30: COVER ANGOLO T NERO

**103333.02**



Novalux S.r.l. via Marzabotto, 2 40050 Funo di Argelato (BO) Italy  
Tel: +39 051 860558 · Fax +39 051 6647859 · Mail: [info@novalux.it](mailto:info@novalux.it) · VAT number 00536541204 · [novalux.com](http://novalux.com)  
Company subject to the management and coordination by SLV GmbH

This technical data sheet is owned by Novalux S.r.l., all rights reserved. Novalux S.r.l. reserves the right to make changes without prior notice.