

**⚠ DANGER / DANGER / GEFAHR / PELIGRO / PERICOLO / ОПАСНО / 危險**

**HAZARD OF ELECTRIC SHOCK, EXPLOSION, OR ARC FLASH**  
Disconnect all power before servicing equipment. Failure to follow these instructions will result in death or serious injury.

**RISQUE D'ÉLECTROCUTION, D'EXPLOSION OU D'ECLAIR D'ARC ELECTRIQUE**  
Coupez toutes les alimentations avant de travailler sur cet appareil. Le non-respect de ces instructions provoquera la mort ou des blessures graves.

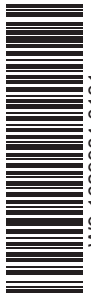
**GEFAHR VON ELEKTRISCHEM SCHLAG, EXPLOSION ODER LICHTBOGEN**  
Vor dem Arbeiten am Gerät alle Spannungsversorgungen abschalten. Die Nichtbeachtung dieser Anweisungen führt zu Tod oder schwereren Verletzungen.

**PELIGRO DE DESCARGA ELÉCTRICA, EXPLOSIÓN O ARCO ELECTRICO**  
Desconecte todas las alimentaciones antes de manipular el producto. Si no se siguen estas instrucciones provocará lesiones graves o incluso la muerte.

**RISCHIO DI SCARICA ELETTRICA, ESPLOSIONE O ARCO ELETTRICO**  
Scollegare l'apparecchio da tutti i circuiti di alimentazione prima di qualsiasi intervento. Il mancato rispetto di queste istruzioni provocherà morte o gravi infortuni.

**Опасность поражением электрическим током, опасность взрыва или вспышки дуги.**  
Перед обслуживанием или ремонтом убедитесь, что питание отключено. Несоблюдение этих инструкций приведет к смерти или серьезной травме.

**可能有触电、爆炸或电弧灼伤危险**  
在此电力设备上进行操作时, 请先断开所有电源。不遵循上述规定将可能导致人员伤亡。

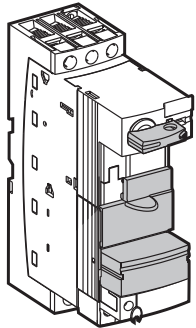


W9 1629984 0131

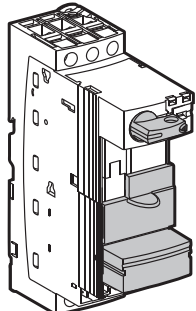


**A**

LUB12 / LUB32



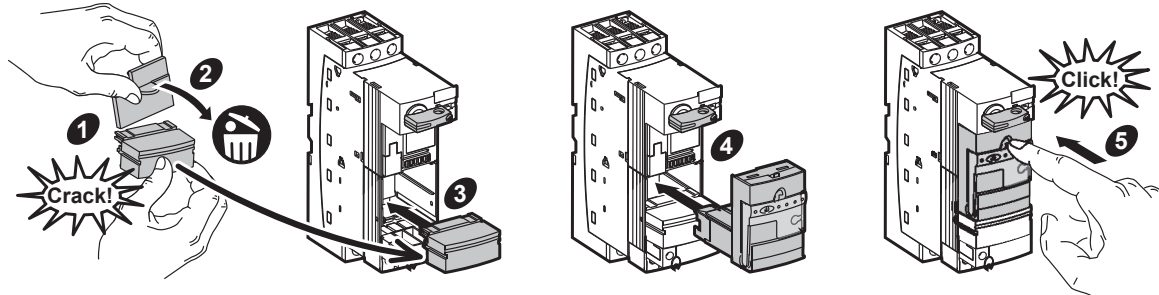
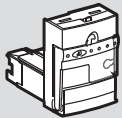
LUB120 / LUB320



LU9BN11

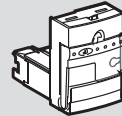
**B**

LUC•

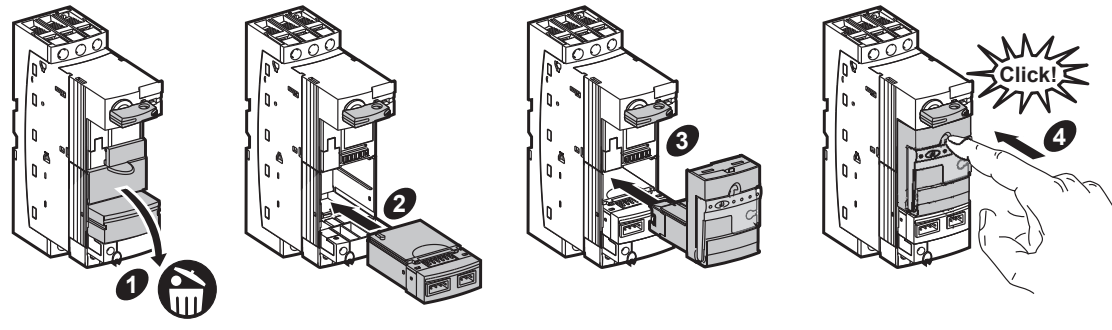


**B'**

LUC•

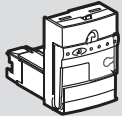


LUF• / ASILUF•

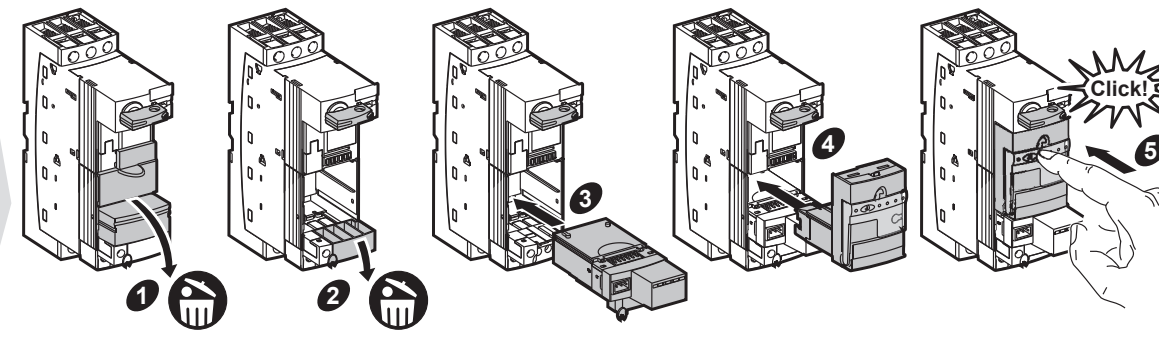
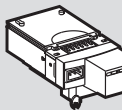


**B''**

LUC•



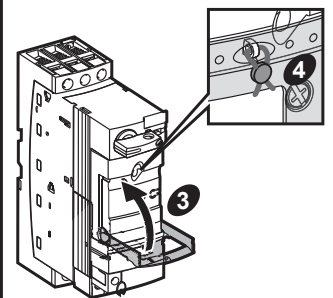
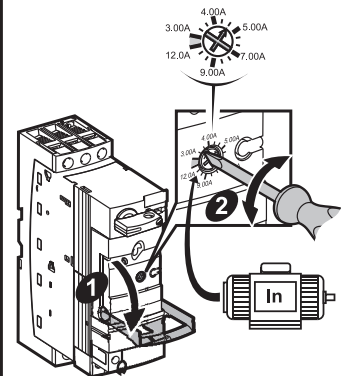
LUL•

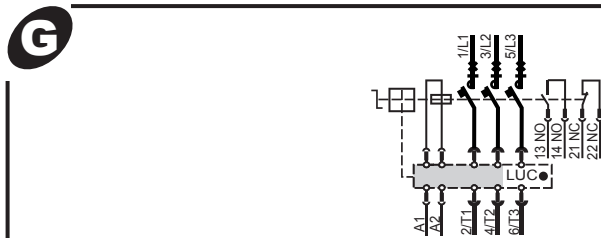
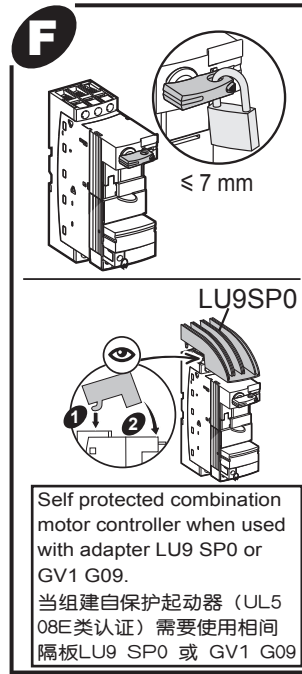
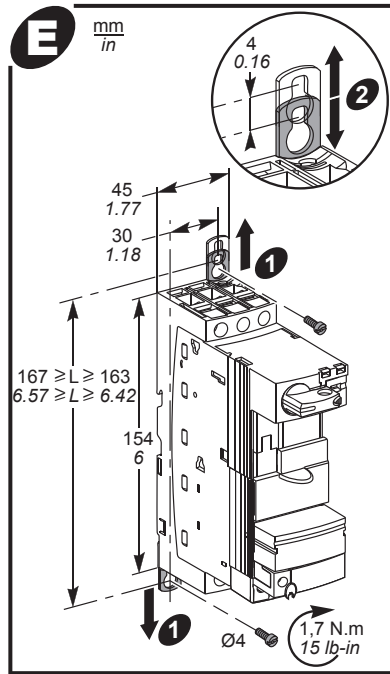
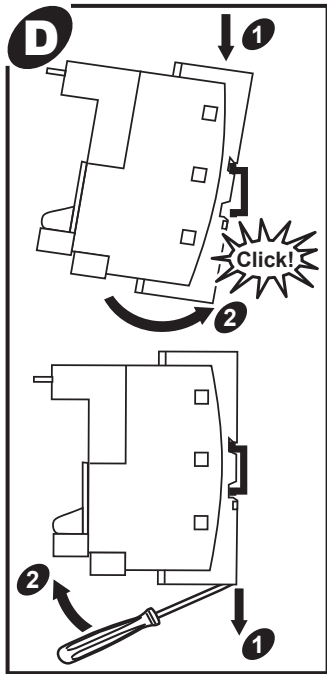















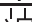
**C**

LUCA / LUCB  
LUCC / LUCD

www.schneider-electric.com/site/home





												
	1...6 mm <sup>2</sup> AWG 18...10	1...6 mm <sup>2</sup> AWG 18...10	2.5...10 mm <sup>2</sup> AWG 14...8	1.5...6 mm <sup>2</sup> AWG 16...10	1...10 mm <sup>2</sup> AWG 18...8	1...6 mm <sup>2</sup> AWG 18...10	10 mm 0.39 in	Ø6 mm Ø0.24 in	Ø4 mm Ø0.16 in	2.5 N.m 22 lb-in.		
	0.34...1.5 mm <sup>2</sup> AWG 22...16	0.75...1.5 mm <sup>2</sup> AWG 18...16	0.75...1.5 mm <sup>2</sup> AWG 18...16	0.75...1.5 mm <sup>2</sup> AWG 18...16	0.75...1.5 mm <sup>2</sup> AWG 18...16	0.75...1.5 mm <sup>2</sup> AWG 18...16	7 mm 0.28 in	Ø5 mm Ø0.20 in	Ø3 mm Ø0.12 in	1.2 N.m 10.5 lb-in.		

Combinations of ATS●01, LUALB1 and LUB● have a 100 kA SCCR at 460 V maximum.

- Do not remove LUF● /ASILUF● /LUL● modules if the product is in trip position.
- Ne pas retirer les modules LUF● /ASILUF● /LUL● si le produit est en position trip.
- Entfernen Sie keine Baugruppen vom Typ LUF● /ASILUF● /LUL●, wenn sich das Produkt in Auslöseposition befindet.
- No retirar los módulos LUF● /ASILUF● /LUL● si el producto se encuentra en posición activada (trip)
- Non togliere i moduli LUF● /ASILUF● /LUL● se il prodotto è in posizione di sblocco.
- Запрещается снимать модули LUF● /ASILUF● /LUL●, если изделие находится в положении отпущения (trip).
- 设备处于脱扣位置时，切勿移动LUF/ASILUF/LUL模块

