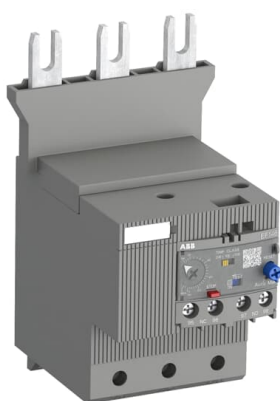


PRODUCT-DETAILS

# EF146-150

## EF146-150 Electronic Overload Relay 54 ... 150

A



### Informations générales

Extension du type de produit	EF146-150
Code de produit	1SAX351001R1101
EAN	4013614442230
Description courte	EF146-150 Electronic Overload Relay 54 ... 150 A

#### Description longue

The EF146 is a self-supplied electronic overload relay, which means no extra external supply is needed. It offers reliable and fast protection for motors in the event of overload or phase failure. Easy to use like a thermal overload relay and compatible with standard motor applications, the electronic overload relay is convincing, above all, due to its wide setting range, high accuracy, high operational temperature range and the possibility to select a trip class (10E, 20E, 30E). Further features are the temperature compensation, trip contact (NC), signal contact (NO), automatic- or manual reset selectable, trip-free mechanism, STOP- and Test function and a trip indication. The overload relays are connected directly to the contactors. The EF65, EF96 and EF146 have ATEX and IECEx certification 1)

1) ATEX is valid for products produced from week 42, 2014.  
IECEx is valid for products produced from week 15, 2017.

### Commande

Quantité minimum	1 pièce
Code douanier	85364900

### Downloads Préférés

Fiche produit, informations	2CDC107041D0201
-----------------------------	-----------------

## techniques

Instructions et manuels	2CDC107028M6803
Instructions et manuels (Partie 2)	1SAC200017M0002
Ex Operating Instructions	2CDC107043M6801
Time-Current Characteristic Curve	1SAX100509F0002 1SAX100510F0001
CAD Dimensional Drawing	2CDC001079B0201
Schéma dimensionnel	1SAX300407F0001

## Dimensions

Produit Largeur Net	89.05 mm
Produit Hauteur Net	150.4 mm
Produit Longueur Net	105.2 mm
Poids net	0.879 kg

## Technique

Setting Range	54 ... 150 A
Tension	Circuit auxiliaire 600 V AC/DC Circuit principal 1000 V AC
Courant nominal de fonctionnement ( $I_g$ )	150 A
Fréquence assignée (f)	Circuit auxiliaire 50 Hz Circuit auxiliaire 60 Hz Circuit auxiliaire DC Circuit principal 50 Hz Circuit principal 60 Hz
Tension assignée de tenue aux chocs ( $U_{imp}$ )	Circuit auxiliaire 6 kV Circuit principal 8 kV
Tension assignée d'isolement ( $U_i$ )	1000 V
Nombre de pôles	3
Number of Auxiliary Contacts NC	1
Number of Auxiliary Contacts NO	1
Number of Protected Poles	3
Courant thermique conventionnel à l'air libre ( $I_{th}$ )	Auxiliary Circuit NC 6 A Auxiliary Circuit NO 6 A
Courant assignée d'emploi AC-15 ( $I_e$ )	(240 V) NC 3 A (240 V) NO 3 A (400 V) NC 1.1 A (400 V) NO 1.1 A (500 V) NC 0.75 A (500 V) NO 0.75 A
Courant assignée d'emploi DC-13 ( $I_e$ )	(125 V) NC 0.55 A (125 V) NO 0.5 A (24 V) NC 1.5 A (24 V) NO 1.5 A (250 V) NC 0.27 A (250 V) NO 0.27 A (60 V) NC 0.55 A (60 V) NO 0.55 A
Indice de protection	Housing IP20 Main Circuit Terminals IP10
Degré de pollution	3

Connecting Capacity Auxiliary Circuit	Flexible with Ferrule 1/2x 0.75 ... 2.5 mm <sup>2</sup> Flexible with Insulated Ferrule 1/2x 0.75 ... 2.5 mm <sup>2</sup> Flexible 1/2x 0.75 ... 2.5 mm <sup>2</sup> Rigid 1/2x 1 ... 4 mm <sup>2</sup>
Connecting Capacity Main Circuit	Flexible with Ferrule 1x 10 ... 70 mm <sup>2</sup> Flexible with Ferrule 2x 10 ... 35 mm <sup>2</sup> Flexible with Insulated Ferrule 1x 10 ... 70 mm <sup>2</sup> Flexible with Insulated Ferrule 2x 2 ... 35 mm <sup>2</sup> Flexible 1x 10 ... 70 mm <sup>2</sup> Flexible 2x 10 ... 35 mm <sup>2</sup> Rigid 1x 10 ... 95 mm <sup>2</sup> Rigid 2x 10 ... 35 mm <sup>2</sup>
Couple de serrage	Auxiliary Circuit 0.8 ... 1.2 N·m Main Circuit 10 N·m
Wire Stripping Length	Auxiliary Circuit 9 mm Main Circuit 20 mm
Recommended Screw Driver	Circuit auxiliaire Pozidriv 2 Circuit principal Hexagon 4
Type d'encastrement	1 ... 6
Power Loss	at Rated Operating Conditions per Pole 0.204 ... 1.575 W
Adapté pour	AF116 AF140 AF146
Normes et standards	IEC/EN 60947-1 IEC/EN 60947-4-1 IEC/EN 60947-5-1 UL 60947-1 UL 60947-4-1

## Technique UL/CSA

Maximum Operating Voltage UL/CSA	Circuit principal 600 V AC
Contact Rating UL/CSA	(NC:) B600 (NC:) Q600 (NO:) B600 (NO:) Q600
Connecting Capacity Main Circuit UL/CSA	Flexible 1x 6-00 AWG Flexible 2x 6-2 AWG Stranded 2x 6-2 AWG Stranded 1x 6-00 AWG
Connecting Capacity Auxiliary Circuit UL/CSA	Flexible 1/2x 18-10 AWG Stranded 1/2x 18-10 AWG
Tightening Torque UL/CSA	Auxiliary Circuit 7 ... 1 in·lb Main Circuit 70 in·lb

## Environnement

Température de l'air ambiant	Operation -25 ... +70 °C Operation Compensated -25 ... +70 °C Storage -50 ... +85 °C
Ambient Air Temperature Compensation	Oui
Altitude de fonctionnement maximale autorisée	2000 m
Résistance aux chocs selon CEI 60068-2-27	11 ms Pulse 25g
Resistance to Vibrations acc. to IEC 60068-2-6	5g / 3 ... 150 Hz
Statut RoHS	Following EU Directive 2011/65/EU and Amendment 2015/863 July 22, 2019

## Eco Transparence

**Certificats et Déclarations (Numéro de document)**

Certificat ABS	1SAA941002-0102
Certificat ATEX	1SAA941004-3901
Certificat BV	1SAA941002-0201
CB Certificate	1SAA964013-2001
CCS Certificate	1SAA941001-0901
CQC Certificate	CQC2013010309592132
Declaration of Conformity - CCC	2020980309000286
Déclaration de Conformité - CE	1SAD101100-3601
Declaration of Conformity - UKCA	1SAD201100-3601
Certificat DNV	1SAA941003-0302
EAC Certificate	1SAA941003-2701
IECEX Certificate	1SAA941000-4001
Certificat LR	1SAA941002-0501
Certificat RINA	RINA_ELE376813CS
Certificat RMRS	1SAA941001-0701
Certificat UL	E48139-19990512

**Emballage**

Emballage Niveau 1 Unités	1 pièce
Emballage Niveau 1 Largeur	160 mm
Emballage Niveau 1 Hauteur	107 mm
Emballage Niveau 1 Longueur	97 mm
Emballage Niveau 1 Poids	0.984 kg
Emballage Niveau 1 EAN	4013614442230
Emballage Niveau 2 Unités	20 pièce
Emballage Niveau 2 Largeur	489 mm
Emballage Niveau 2 Hauteur	227 mm
Emballage Niveau 2 Longueur	332 mm
Emballage Niveau 2 Poids	20.243 kg
Emballage Niveau 2 EAN	4013614483394

**Classifications**

Code de classification d'objet	F
ETIM 4	EC001080 - Electronic overload relay
ETIM 5	EC001080 - Electronic overload relay
ETIM 6	EC001080 - relais de surcharge électronique

ETIM 7	EC001080 - Electronic overload relay
ETIM 8	EC001080 - Electronic overload relay
eClass	V11.0 : 27371502
UNSPSC	39122330
Code de catégorie granulaire IDEA (IGCC)	5365 >> Electronic overload relay
E-Number (Finland)	3706582
E-Number (Sweden)	3210247

## Accessories

Identifiant	Description	Type	Quantity	Unit Of Measure
1SAX101911R1001	DRS-F-01 Remote Reset Coil	DRS-F-01	1	piece
1SAX101911R1002	DRS-F-02 Remote Reset Coil	DRS-F-02	1	piece
1SAX101911R1003	DRS-F-03 Remote Reset Coil	DRS-F-03	1	piece
1SAX101911R1004	DRS-F-04 Remote Reset Coil	DRS-F-04	1	piece
1SAX101911R1011	DRS-F-EF-01 Remote Coil	DRS-F-EF-01	1	piece
1SAX101911R1012	DRS-F-EF-02 Remote Coil	DRS-F-EF-02	1	piece
1SAX101911R1013	DRS-F-EF-03 Remote Coil	DRS-F-EF-03	1	piece
1SAX101911R1014	DRS-F-EF-04 Remote Coil	DRS-F-EF-04	1	piece
1SAZ701903R1001	WRH-F Holder	WRH-F	1	piece
1SAZ701903R1011	WRB-400 Bowden Wire	WRB-400	1	piece
1SAZ701903R1012	WRB-600 Bowden Wire	WRB-600	1	piece
1SAZ701903R1013	WRB-1000 Bowden Wire	WRB-1000	1	piece
1SAZ701903R1030	WRBG Gasket	WRBG	1	piece
1SFA616162R1014	KPR3-101L Reset push button	KPR-101L	1	piece

## Catégories

Produits basse tension → Produits de Contrôle, Protection et sécurité machines → Contacteurs → Relais électroniques de protection contre les surcharges

