



AURORA

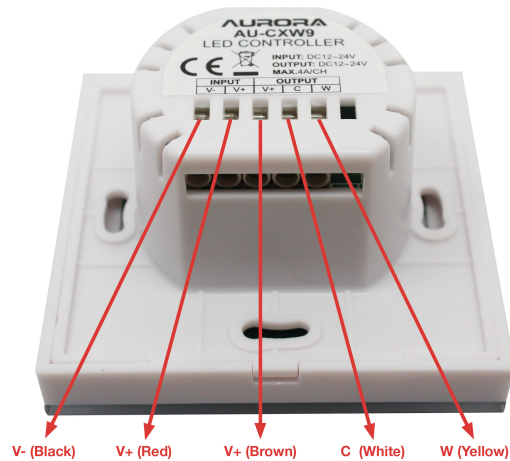
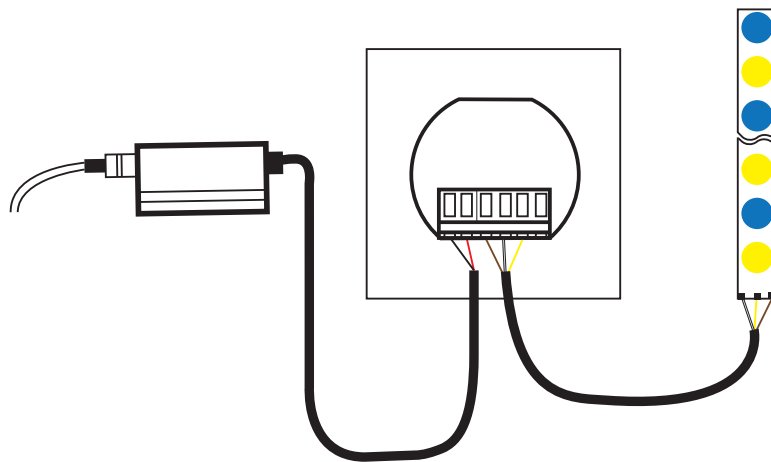
COLOUR XCHANGE WALL CONTROLLER – AU-CXW9

PLEASE READ THESE INSTRUCTIONS CAREFULLY BEFORE INSTALLATION
LEAVE A COPY FOR THE USER / MAINTENANCE ENGINEER FOR FUTURE REFERENCE

IMPORTANT INSTALLATION INFORMATION

- Installation should be carried out in accordance with the latest edition of the National Wiring Regulations. If in doubt consult a qualified electrician.
- This is a colour xchange wall controller and can be used with a suitable 12V/24V DC driver.
- For use with AU-ST90CX LED strip.

TYPICAL INSTALLATION METHOD

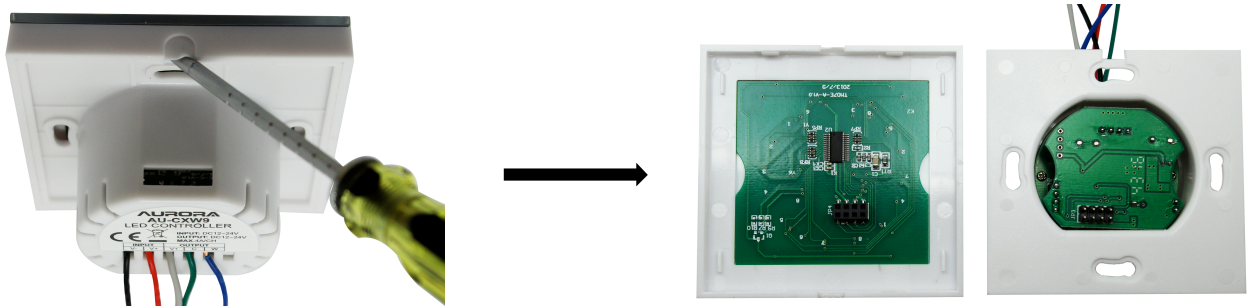


DESCRIPTION OF THE FUNCTIONS

Cool White to Warm White.	On/Off, Hold for 3 secs to turn off buzzer.	Decrease Brightness.	Increase Brightness.

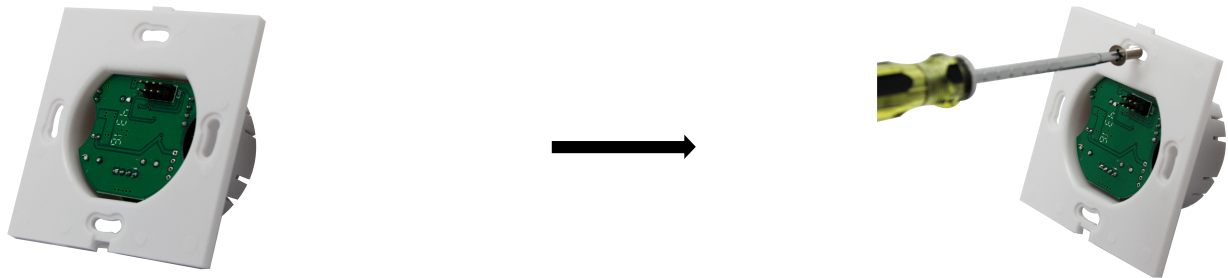
OPEN TOUCH PANEL

Gently pry open gaps in side of touch panel with a flat screwdriver, you can then slowly remove the front panel, as shown below;



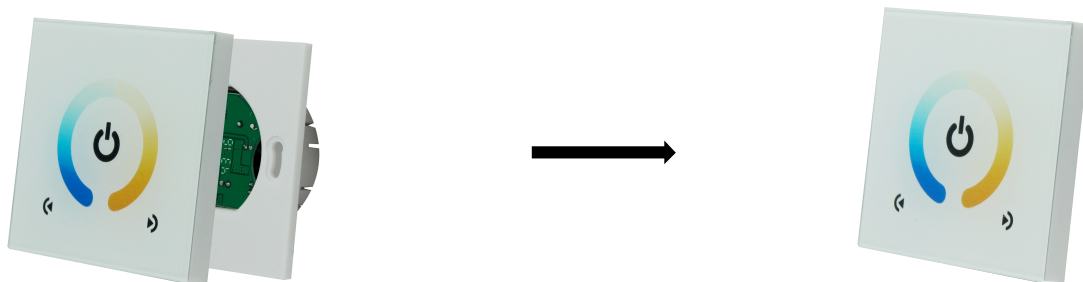
INSTALL BACK BOX

Fix in a single gang back box with a minimum depth of 35mm.



FIT FRONT PANEL

Align the panel as below and push in place.



Environmental Protection (W.E.E.E.) – Aurora’s WEEE Reg.No. WEE/BG0130YX (UK Only)



Waste Electrical & Electronic Equipment Regulations (WEEE) requires that any of our products showing this marking (left) must not be disposed of with other household or commercial waste. Aurora does not levy any WEEE disposal charges to its customers for affected WEEE related products. To prevent possible harm to the environment or human health from uncontrolled waste disposal, please separate any such product from other waste types and recycle it responsibly at your local facilities. Check with your Local Authority, Recycling Centre or retailer for recycling advice. If, when you purchased any Aurora product, your supplier included a WEEE disposal fee, you should then contact your supplier for advice on his takeback of the product for the correct disposal.

Warranty

See www.auroralighting.com for full details of warranties and Extended Warranty Terms and Conditions. The warranty is invalid in the case of improper use, tampering, and removal of the Q.C. date label, installation in an improper working environment or installation not according to the current edition of the National Wiring Regulations. Should this product fail during the warranty period it will be replaced free of charge, this is subject to correct installation and return of the faulty product. Aurora does not accept responsibility for any installation costs associated with the replacement of this product. This warranty is in addition to the statutory rights in your country of purchase. Aurora reserves the right to alter specifications without prior notice.