

# Explosion-protected recessed ceiling LED-light and fluorescent light fittings

RFL LED A 600, RLF LED A 1200 and self-contained emergency luminaire RLF LED A 600 N, RLF LED A 1200 N RLF/RLF-INOX 250 18 - 58 W / RLF/RLF-INOX 250... N 18 - 36 W (Zone 1, 2, 21, 22)

## The explosion-protected lighting concept for recessed ceiling light fittings.

The new Ex recessed-ceiling light fittings RLF ..LED A completes the portfolio together with the RLF 250... for spraying cabinets and paint shops for installation in ceilings where smooth and flush surfaces are important. The glass pane, which is installed with a metal hinge, allows the use of cleaning solvents, if necessary, in order to remove easily spray mist and paintbrushes. Similar requirements are also encountered in the pharmaceutical and chemical industries as well as in technology labs, where simple cleaning and smooth design are essential.

## Designed for easy installation

The housing comprises white-painted steel sheet with an optional cover frame for ceiling mounting. In addition, it can also be fixed by means of two M8 drilled holes on the top of the housing. Optional a stainless steel enclosure is available on request. For an external PE-connection two screw terminals up to 6 mm<sup>2</sup> are available.



The hinged, frameless pane made of 5 mm thick safety glass is fixed with 2 resp. 3 captive screws and has inside hinges. The EPDM sealing ensures the high degree of protection IP65.

## Long-term safety

Thanks to its large input voltage range the electronic driver (110- 254 A AC / 220- 250 V DC) can be used internationally. Due to the low self-heating, ambient temperatures up to +60 ° C are possible. The fluorescent version RLF 250 .. contains a wide range voltage dual-channel electronic ballast with EOL circuit. On request, the RLF LED A series is available for up to -40°C for extreme low temperature environments.

## Versatile light

Depending on the application, three luminous flux versions are available in efficient LED technology (3000/7000/13000 lm) in various sizes. Through their variety even demanding lighting tasks can be faced. In addition, the light colour 6000K ensures an illumination similar to daylight, which is a high priority, for example, in paint shops. Using traditional fluorescent lamps the RLF 250... series combines light output with easy re-lamping.

## Features

- Universal electronic driver for 110 - 254 V AC / 220 - 250 V DC (LED) and electronic ballast for fluorescent lamps
- Various lumen packages for LED up to 13447 lm in different sizes available
- Suitable for high ambient temperatures up to +60 °C (LED, on request up to -40 °C)
- Flush installation, especially for spraying cabinets and paint shops with optional mounting bracket
- Toughened safety glass
- Stainless steel enclosure on request
- With self-contained battery unit (RLF LED A...N and RLF 250... N)
- Suitable for B15 fire resistance ceilings



Using optional mounting brackets the luminaires can be installed adjustable on walls or ceilings

## Easy to install

The double-sided through-wiring in combination with the generous connecting space provides a cost-saving installation.

## If you need a reliable and decentralised emergency lighting

The self-contained emergency light fitting RLF LED A... N or RLF 250 ... N ensures decentralised emergency lighting, independent of central systems. These luminaires offers in particular significant cost advantages, particularly in large-scale installations.

The self-contained emergency light fitting with integrated battery allows an autonomous emergency lighting with 1.5 h or 3 h rated operating time.

## Ordering details

Type	Content	Luminous flux	Emergency lighting duration	Cable gland/ thread	Screw plugs	Order No.
<b>RLF LED A 600</b>						
RLF LED A 600 3L	2/5-2K	3373 lm		1 x M25, Plastic cable gland	1 x M25	<b>1 2286 111 103</b>
RLF LED A 600 3L	2/5-2M <sup>1)</sup>	3373 lm		2 x M20, Metal thread	1 x M20	<b>1 2286 111 111</b>
RLF LED A 600 7L	2/5-2K	6664 lm		1 x M25, Plastic cable gland	1 x M25	<b>1 2286 141 103</b>
RLF LED A 600 7L	2/5-2M <sup>1)</sup>	6664 lm		2 x M20, Metal thread	1 x M20	<b>1 2286 141 111</b>
<b>RLF LED A 1200</b>						
RLF LED A 1200 7L	2/5-2K	6742 lm		1 x M25, Plastic cable gland	1 x M25	<b>1 2286 241 103</b>
RLF LED A 1200 7L	2/5-2M <sup>1)</sup>	6742 lm		2 x M20, Metal thread	1 x M20	<b>1 2286 241 111</b>
RLF LED A 1200 13L	2/5-2K	13447 lm		1 x M20, Plastic cable gland	1 x M25	<b>1 2286 271 103</b>
RLF LED A 1200 13L	2/5-2M <sup>1)</sup>	13447 lm		2 x M20, Metal thread	1 x M20	<b>1 2286 271 111</b>
<b>RLF LED A 600 N (self-contained emergency light fitting)</b>						
RLF LED A 600 N 3L	2/4-2K	3373 lm	1.5 h	1 x M25, plastic cable gland	1 x M25	<b>1 2288 111 103</b>
RLF LED A 600 N 3L	2/5-2M <sup>1)</sup>	3373 lm	1.5 h	2 x M20, Metal thread	1 x M20	<b>1 2288 111 111</b>
RLF LED A 600 N 3L	2/5-2K	3373 lm	3 h	1 x M25, Plastic cable gland	1 x M25	<b>1 2289 111 103</b>
RLF LED A 600 N 3L	2/5-2M <sup>1)</sup>	3373 lm	3 h	2 x M20, Metal thread	1 x M20	<b>1 2289 111 111</b>
RLF LED A 600 N 7L	2/5-2K	6664 lm	1.5 h	1 x M25, Plastic cable gland	1 x M25	<b>1 2288 141 103</b>
RLF LED A 600 N 7L	2/5-2M <sup>1)</sup>	6664 lm	1.5 h	2 x M20, Metal thread	1 x M20	<b>1 2288 141 111</b>
RLF LED A 600 N 7L	2/5-2K	6664 lm	3 h	1 x M25, Plastic cable gland	1 x M25	<b>1 2289 141 103</b>
RLF LED A 600 N 7L	2/5-2M <sup>1)</sup>	6664 lm	3 h	2 x M20, Metal thread	1 x M20	<b>1 2289 141 111</b>
<b>RLF LED A 1200 N (self-contained emergency light fitting)</b>						
RLF LED A 1200 N 7L	2/5-2K	6742 lm	1.5 h	1 x M25, Plastic cable gland	1 x M25	<b>1 2288 241 103</b>
RLF LED A 1200 N 7L	2/5-2M <sup>1)</sup>	6742 lm	1.5 h	2 x M20, Metal thread	1 x M20	<b>1 2288 241 111</b>
RLF LED A 1200 N 7L	2/5-2K	6742 lm	3 h	1 x M25, Plastic cable gland	1 x M25	<b>1 2289 241 103</b>
RLF LED A 1200 N 7L	2/5-2M <sup>1)</sup>	6742 lm	3 h	2 x M20, Metal thread	1 x M20	<b>1 2289 241 111</b>
RLF LED A 1200 N 13L	2/5-2K	13447 lm	1.5 h	1 x M25, Plastic cable gland	1 x M25	<b>1 2288 271 103</b>
RLF LED A 1200 N 13L	2/5-2M <sup>1)</sup>	13447 lm	1.5 h	2 x M20, Metal thread	1 x M20	<b>1 2288 271 111</b>
RLF LED A 1200 N 13L	2/5-2K	13447 lm	3 h	1 x M25, Plastic cable gland	1 x M25	<b>1 2289 271 103</b>
RLF LED A 1200 N 13L	2/5-2M <sup>1)</sup>	13447 lm	3 h	2 x M20, Metal thread	1 x M20	<b>1 2289 271 111</b>

Scope of delivery with LED and without fixing accessories  
Metal cable glands see catalogue part 2: 2.3.12 ff



Ordering details

Type	Content	Terminals	Through-wiring single-ended	Through-wiring twin-ended	Cable gland/ thread	Screw plugs	Blanking plug	Order No.
<b>RLF 250../.. (twin lamp)</b>								
RLF 25018/18 (2 x 18 W)	2/5-2K	2 x 5	–	x	2 x M25, plastic	1		<b>1 2283 218 001</b>
RLF 25018/18 (2 x 18 W)	2/5-2M <sup>1)</sup>	2 x 5	–	x	2 x M20, metal thread	1 x M20		<b>1 2283 218 002</b>
RLF 25036/36 (2 x 36 W)	2/5-2K	2 x 5	–	x	2 x M25, plastic	1		<b>1 2283 236 001</b>
RLF 25036/36 (2 x 36 W)	2/5-2M <sup>1)</sup>	2 x 5	–	x	2 x M20, metal thread	1 x M20		<b>1 2283 236 002</b>
RLF 25058/58 (2 x 58 W)	2/5-2K	2 x 5	–	x	2 x M25, plastic	1		<b>1 2283 258 001</b>
RLF 25058/58 (2 x 58 W)	2/5-2M <sup>1)</sup>	2 x 5	–	x	2 x M20, metal thread	1 x M20		<b>1 2283 258 002</b>
<b>RLF 2503.. (three lamps)</b>								
RLF 250336 (3 x 36 W)	2/5-2K	2 x 5	–	x	2 x M25, plastic	1		<b>1 2283 336 011</b>
RLF 250336 (3 x 36 W)	2/5-2M <sup>1)</sup>	2 x 5	–	x	2 x M20, metal thread	1 x M20		<b>1 2283 336 012</b>
RLF 250358 (3 x 58 W)	2/5-2K	2 x 5	–	x	2 x M25, plastic	1		<b>1 2283 358 011</b>
RLF 250358 (3 x 58 W)	2/5-2M <sup>1)</sup>	2 x 5	–	x	2 x M20, metal thread	1 x M20		<b>1 2283 358 012</b>
<b>RLF 2504.. (four lamps)</b>								
RLF 250418 (4 x 18 W)	2/5-2K	2 x 5	–	x	2 x M25, plastic	1		<b>1 2283 418 011</b>
RLF 250418 (4 x 18 W)	2/5-2M <sup>1)</sup>	2 x 5	–	x	2 x M20, metal thread	1 x M20		<b>1 2283 418 012</b>
RLF 250436 (4 x 36 W)	2/5-2K	2 x 5	–	x	2 x M25, plastic	1		<b>1 2283 436 011</b>
RLF 250436 (4 x 36 W)	2/5-2M <sup>1)</sup>	2 x 5	–	x	2 x M20, metal thread	1 x M20		<b>1 2283 436 012</b>
RLF 250458 (4 x 58 W)	2/5-2K	2 x 5	–	x	2 x M25, plastic	1		<b>1 2283 458 011</b>
RLF 250458 (4 x 58 W)	2/5-2M <sup>1)</sup>	2 x 5	–	x	2 x M20, metal thread	1 x M20		<b>1 2283 458 012</b>

Ordering details

Type	Content	Emergency lighting duration	Terminals	Through-wiring single-ended	Through-wiring twin-ended	Cable gland/ thread	Screw plugs	Order No.
<b>RLF 250../.. N (twin lamp)</b>								
RLF 25018/18 N (2 x 18 W)	2/6-2K	1.5 h	2 x 6	–	x	2 x M25, plastic	1 x M25	<b>1 2283 218 201</b>
RLF 25018/18 N (2 x 18 W)	2/6-2M	1.5 h	2 x 6	–	x	2 x M20 x 1.5, metal thread	1 x M20	<b>1 2283 218 202</b>
RLF 25018/18 N (2 x 18 W)	2/6-2K	3 h	2 x 6	–	x	2 x M25, plastic	1 x M25	<b>1 2283 218 301</b>
RLF 25018/18 N (2 x 18 W)	2/6-2M	3 h	2 x 6	–	x	2 x M20 x 1.5, metal thread	1 x M20	<b>1 2283 218 302</b>
RLF 25036/36 N (2 x 36 W)	2/6-2K	1.5 h	2 x 6	–	x	2 x M25, plastic	1 x M25	<b>1 2283 236 201</b>
RLF 25036/36 N (2 x 36 W)	2/6-2M	1.5 h	2 x 6	–	x	2 x M20 x 1.5, metal thread	1 x M20	<b>1 2283 236 202</b>
RLF 25036/36 N (2 x 36 W)	2/6-2K	3 h	2 x 6	–	x	2 x M25, plastic	1 x M25	<b>1 2283 236 301</b>
RLF 25036/36 N (2 x 36 W)	2/6-2M	3 h	2 x 6	–	x	2 x M20 x 1.5, metal thread	1 x M20	<b>1 2283 236 302</b>
<b>RLF 2504.. N (four lamps)</b>								
RLF 250418 N (4 x 18 W)	2/6-2K	1.5 h	2 x 6	–	x	2 x M25, plastic	1 x M25	<b>1 2283 418 201</b>
RLF 250418 N (4 x 18 W)	2/6-2M	1.5 h	2 x 6	–	x	2 x M20 x 1.5, metal thread	1 x M20	<b>1 2283 418 202</b>
RLF 250418 N (4 x 18 W)	2/6-2K	3 h	2 x 6	–	x	2 x M25, plastic	1 x M25	<b>1 2283 418 301</b>
RLF 250418 N (4 x 18 W)	2/6-2M	3 h	2 x 6	–	x	2 x M20 x 1.5, metal thread	1 x M20	<b>1 2283 418 302</b>
RLF 250436 N (4 x 36 W)	2/6-2K	1.5 h	2 x 6	–	x	2 x M25, plastic	1 x M25	<b>1 2283 436 201</b>
RLF 250436 N (4 x 36 W)	2/6-2M	1.5 h	2 x 6	–	x	2 x M20 x 1.5, metal thread	1 x M20	<b>1 2283 436 202</b>
RLF 250436 N (4 x 36 W)	2/6-2K	3 h	2 x 6	–	x	2 x M25, plastic	1 x M25	<b>1 2283 436 301</b>
RLF 250436 N (4 x 36 W)	2/6-2M	3 h	2 x 6	–	x	2 x M20 x 1.5, metal thread	1 x M20	<b>1 2283 436 302</b>

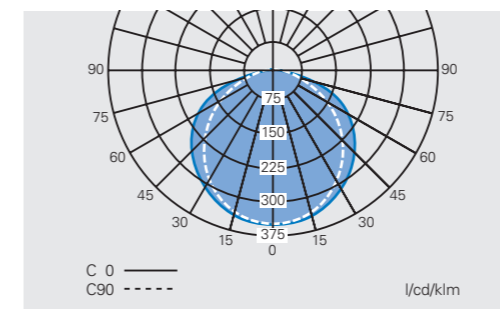
Scope of delivery without lamp and fixing accessories  
Metal cable glands see catalogue part 2: 2.3.12 ff

Accessories

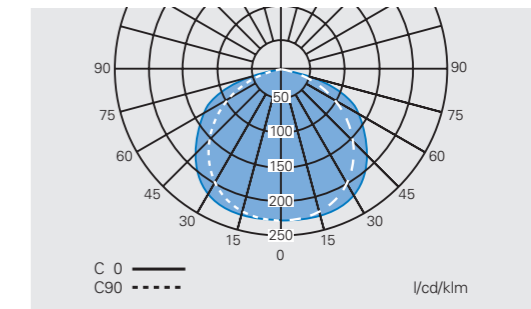
Type	Application	Order No.
Mounting frame for recessed ceiling mounting	for RLF LED A 600 / 600 N 2L, RLF 25018/18, 2 x 18W	<b>3 2283 000 001</b>
Mounting frame for recessed ceiling mounting	for RLF LED A 600 / 600 N 5L / RLF 250418, 4 x 18 W	<b>3 2283 000 002</b>
Mounting frame for recessed ceiling mounting	for RLF LED A 1200 / 1200 N 5L / RLF 250, 2/3 x 36 W,	<b>3 2283 000 003</b>
Mounting frame for recessed ceiling mounting	for RLF LED A 1200 / 1200 N 10L / RLF 250436, 4 x 36 W	<b>3 2283 000 004</b>
Mounting frame for recessed ceiling mounting	for RLF 250, 2/3 x 58 W	<b>3 2283 000 005</b>
Mounting frame for recessed ceiling mounting	for RLF 250458, 4 x 58 W	<b>3 2283 000 006</b>
Mounting frame for recessed ceiling mounting	for RLF-INOX 25018/18, 2 x 18W	<b>3 2283 000 008</b>
Mounting frame for recessed ceiling mounting	for RLF-INOX 250418, 4 x 18 W	<b>3 2283 000 009</b>
Mounting frame for recessed ceiling mounting	for RLF-INOX 25, 2/3 x 36 W,	<b>3 2283 000 010</b>
Mounting frame for recessed ceiling mounting	for RLF-INOX 250436, 4 x 36 W	<b>3 2283 000 011</b>
Mounting frame for recessed ceiling mounting	for RLF-INOX 25, 2/3 x 58 W	<b>3 2283 000 012</b>
Mounting frame for recessed ceiling mounting	for RLF-INOX 250458, 4 x 58 W	<b>3 2283 000 013</b>
Set of wall bracket adjustable (2 pcs.)	for RLF 250..	<b>3 2283 000 007</b>



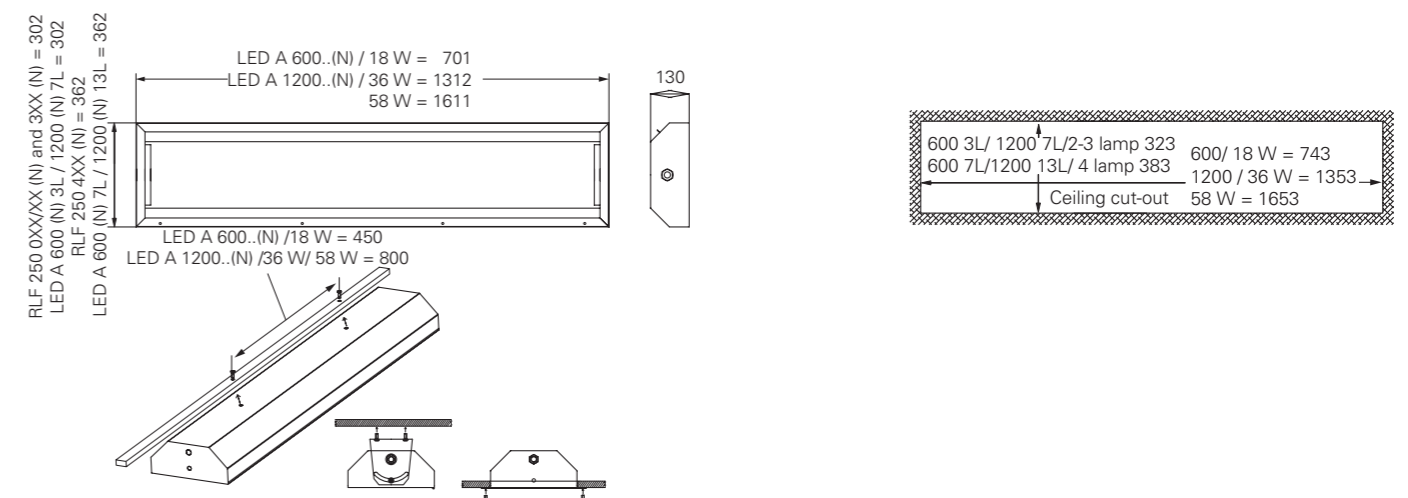
Polar curve RLF... LED A



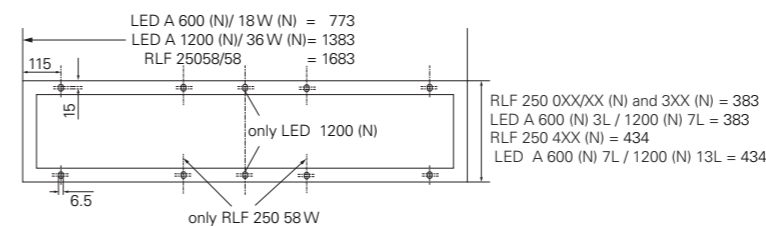
Polar curve RLF...



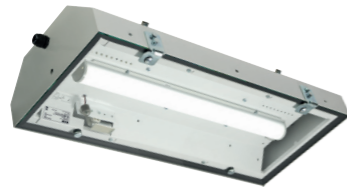
RLF LED 600 / 1200..(N) / RLF 250 ... (N)



Mounting frame RLF



Dimensions in mm

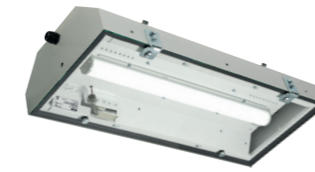


## Technical data

	RLF LED A 600 3L / 7L	RLF LED A 1200 7L / 13L
EU-Type Examination Certificate	FTZÚ 17 ATEX 0002X	FTZÚ 17 ATEX 0002X
Marking accd. to 2014/34/EU	⊕ II 2 G Ex eb mb op is IIC T4 Gb ⊕ II 2D Ex tb op is IIIC T67°C Db	⊕ II 2 G Ex eb mb op is IIC T4 Gb ⊕ II 2D Ex tb op is IIIC T67°C Db
Permissible ambient temperature	-20 °C up to +60 °C	-20 °C up to +55 °C
Rated voltage	110 - 254 V AC / 220 - 250 V DC	110 - 254 V AC / 220 - 250 V DC
Rated current	0.13 A / 0.26 A at 230 V	0.24 A / 0.48 A at 230 V
Frequency	50 - 60 Hz	50 - 60 Hz
Power factor cos φ	≥ 0.95	≥ 0.95
Lifetime L80B50 t <sub>a</sub> 60°C	<b>3L</b> => 50000 h	<b>7L</b> => 50000 h
Lifetime L80B50 t <sub>a</sub> 55°C	<b>7L</b> => 50000 h	<b>13L</b> => 50000 h
Circuit	electronic LED-driver	electronic LED-driver
Protection class	I	I
Lamp / Illuminant	LED module 1 x 30 W / 2 x 30 W	LED module 1 x 50 W / 2 x 50 W
Rated luminous flux of the luminaire	3434 lm (3L) / 6784 lm (7L)	6848 lm (7L) / 13730 lm (13L)
Light colour/ CRI	6000 K / R <sub>a</sub> >70 <sup>2)</sup>	6000 K / R <sub>a</sub> >70 <sup>2)</sup>
Dimensions (L x W x H)	701 x 302 x 130 mm / 701 x 362 x 130 mm	1312 x 302 x 130 mm / 1312 x 362 x 130 mm
Connecting terminals	L1, L2, L3, N, PE; max. 2 x 2.5 mm <sup>2</sup> twin-ended through-wiring	L1, L2, L3, N, PE; max. 2 x 2.5 mm <sup>2</sup> twin-ended through-wiring
Enclosure colour	white RAL 9010	white RAL 9010
Enclosure material	painted steel sheet, white optional: polished stainless steel 304 (1.4301)	painted steel sheet, white optional: polished stainless steel 304 (1.4301)
Weight	9.5 kg (3L) / 11.9 kg (7L)	15.6 kg (7L) / 18.4 kg (13L)
Cable glands / gland plates / enclosure drilling	Ex-e cable glands M25 x 1.5 (plastic), option: M20 x 1.5 metal thread <sup>1)</sup>	Ex-e cable glands M25 x 1.5 (plastic), option: M20 x 1.5 metal thread <sup>1)</sup>
Degree of protection accd. to EN 60529	IP65	IP65
Protective cover / protective bowl	single-safety glass pane of 5 mm thick	single-safety glass pane of 5 mm thick

1) with dustcover if entry/thread is not closed

2) 4000 K on request



## Technical data

	RLF LED A 600 N 3L / 7L	RLF LED A 1200 N 7L / 13L
EU-Type Examination Certificate	FTZÚ 17 ATEX 0002X	FTZÚ 17 ATEX 0002X
Marking accd. to 2014/34/EU	⊕ II 2 G Ex eb mb op is IIC T4 Gb ⊕ II 2D Ex tb op is IIIC T67°C Db	⊕ II 2 G Ex eb mb op is IIC T4 Gb ⊕ II 2D Ex tb op is IIIC T67°C Db
Permissible ambient temperature	0 °C up to +40 °C	0 °C up to +35 °C
Rated voltage	110 - 254 V AC / 220 - 250 V DC	110 - 254 V AC / 220 - 250 V DC
Rated current	0.14 A / 0.26 A at 230 V	0.25 A / 0.49 A at 230 V
Frequency	50 - 60 Hz	50 - 60 Hz
Power factor cos φ	≥ 0.95	≥ 0.95
Lifetime L80B50 t <sub>a</sub> 60°C	<b>3L</b> => 50000 h	<b>7L</b> => 50000 h
Lifetime L80B50 t <sub>a</sub> 55°C	<b>7L</b> => 50000 h	<b>13L</b> => 50000 h
Circuit	electronic LED-driver	electronic LED-driver
Protection class	I	I
Lamp / Illuminant	LED module 1 x 30 W / 2 x 30 W	LED module 1 x 50 W / 2 x 50 W
Rated luminous flux of the luminaire	3434 lm (3L) / 6784 lm (7L)	6848 lm (7L) / 13730 lm (13L)
Light colour/ CRI	6000 K / R <sub>a</sub> >70 <sup>2)</sup>	6000 K / R <sub>a</sub> >70 <sup>2)</sup>
luminous flux in emergency mode	RLF LED A 600 N 1,5h 3L – 515lm RLF LED A 600 N 3,0h 3L – 383lm 3 h, one LED module	RLF LED A 1200 N 1,5h 7L – 829lm RLF LED A 1200 N 3,0h 7L – 447lm
Emergency lighting duration	1.5 h or 3 h	1.5 h or 3 h
Dimensions (L x W x H)	701 x 302 x 130 mm / 701 x 362 x 130 mm	1312 x 302 x 130 mm / 1312 x 362 x 130 mm
Connecting terminals	L, L1,L2, L3, N, PE; max. 2 x 2.5 mm <sup>2</sup> twin-ended through-wiring	L, L1,L2, L3, N, PE; max. 2 x 2.5 mm <sup>2</sup> twin-ended through-wiring
Enclosure colour	white RAL 9010	white RAL 9010
Enclosure material	painted steel sheet, white optional: polished stainless steel 304 (1.4301)	painted steel sheet, white optional: polished stainless steel 304 (1.4301)
Weight	11,50 kg 2L (1,5h)/ 12,10 kg 2L (3h) 13,60 kg 5L (1,5h)/ 14,80 kg 5L (3h)	16,40 kg 5L (1,5h)/ 18,40 kg 5L (3h) 18,50 kg 10L (1,5h)/ 19,10 kg 10L (3h)
Cable glands / gland plates / enclosure drilling	Ex-e cable glands M25 x 1.5 (plastic) , option: M20 x 1.5 metal thread <sup>1)</sup>	Ex-e cable glands M25 x 1.5 (plastic) , option: M20 x 1.5 metal thread <sup>1)</sup>
Degree of protection accd. to EN 60529	IP65	IP65
Protective cover / protective bowl	single-safety glass pane of 5 mm thick	single-safety glass pane of 5 mm thick

1) with dustcover if entry/thread is not closed

2) 4000 K on request



## Technical data

	RLF 25018/18 / RLF 250418	RLF 25036/36 / RLF 250336
EC-Type Examination Certificate	FTZU 06 ATEX 0050 X	FTZU 06 ATEX 0050 X
Marking accd. to 2014/34/EU	⊕ II 2 G Ex ed IIC T4 Gb ⊕ II 2 D Ex tb IIIC T60 °C Db	⊕ II 2 G Ex ed IIC T4 ⊕ II 2 D Ex tb IIIC T60 °C Db
Permissible ambient temperature	-20 °C up to +40 °C	-20 °C up to +40 °C
Rated voltage	110 - 250 V AC / 110 - 250 V DC	110 - 250 V AC / 110 - 250 V DC
Rated current	0.18 A / 0.36 A	0.34 A / 0.51 A
Frequency	50 - 60 Hz	50 - 60 Hz
Power factor cos φ	≥ 0.95	≥ 0.95
Circuit	EVG	EVG
Protection class	I	I
Lamp / Illuminant	2 x T26 / 18 W (T8) / 4 x T26 / 18 W (T8)	2 x T26 / 36 W (T8) / 3 x T26 / 36 W (T8)
Rated luminous flux	2700 lm <sup>1)</sup> / 5400 lm <sup>1)</sup>	6700 lm <sup>1)</sup> / 10050 lm <sup>1)</sup>
Lamp cap	G13 accd. to IEC 60061-1	G13 accd. to IEC 60061
Light output ratio	70 % / 69 %	70 % / 68 %
Dimensions (L x W x H)	701 x 302 x 130 mm / 701 x 362 x 130 mm	1312 x 302 x 130 mm
Connecting terminals	L1, L2, L3, N, PE; max. 2 x 2.5 mm <sup>2</sup> through-wiring twin-ended	L1, L2, L3, N, PE; max. 2 x 2.5 mm <sup>2</sup> through-wiring twin-ended
Enclosure colour	white RAL 9010	white RAL 9010
Enclosure material	painted steel sheet, white optional: polished stainless steel 304 (1.4301)	painted steel sheet, white optional: polished stainless steel 304 (1.4301)
Weight	6.9 kg / 9.5 kg	12.9 kg / 13.4 kg
Cable glands / gland plates / enclosure drilling	Ex-e cable glands M25 x 1.5 (plastic), option: M20 x 1.5 metal thread <sup>2)</sup>	Ex-e cable glands M25 x 1.5 (plastic), option: M20 x 1.5 metal thread <sup>2)</sup>
Degree of protection accd. to EN 60529	IP65	IP65
Protective cover / protective bowl	single-safety glass pane of 5 mm thick	single-safety glass pane of 5 mm thick

<sup>1)</sup> depends on used lamps<sup>2)</sup> with dustcover if entry/thread is not closed

## Technical data

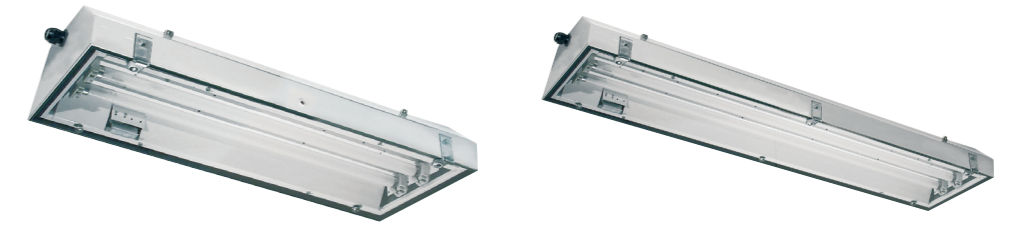
	RLF 250436	RLF 25058/58
EC-Type Examination Certificate	FTZU 06 ATEX 0050 X	FTZU 06 ATEX 0050 X
Marking accd. to 2014/34/EU	⊕ II 2 G Ex ed IIC T4 ⊕ II 2 D Ex tb II IC T60 °C Db	⊕ II 2 G Ex ed IIC T4 ⊕ II 2 D Ex tb IIIC T60 °C Db
Permissible ambient temperature	-20 °C up to +40 °C	-20 °C up to +40 °C
Rated voltage	110 - 250 V AC / 110 - 250 V DC	220 - 250 V AC / 195 - 250 V DC
Rated current	0.68 A	0.53 A
Frequency	50 - 60 Hz	50 - 60 Hz
Power factor cos φ	≥ 0.95	≥ 0.95
Circuit	EVG	EVG
Protection class	I	I
Lamp / Illuminant	4 x T26 / 36 W (T8)	2 x T26 / 58 W (T8)
Rated luminous flux	13400 lm <sup>1)</sup>	10400 lm <sup>1)</sup>
Lamp cap	G13 accd. to IEC 60061-1	G13 accd. to IEC 60061-1
Light output ratio	69 %	68 %
Dimensions (L x W x H)	1312 x 362 x 130 mm	1611 x 302 x 130 mm
Connecting terminals	L1, L2, L3, N, PE; max. 2 x 2.5 mm <sup>2</sup> through-wiring twin-ended	L1, L2, L3, N, PE; max. 2 x 2.5 mm <sup>2</sup> through-wiring twin-ended
Enclosure colour	white RAL 9010	white RAL 9010
Enclosure material	painted steel sheet, white optional: polished stainless steel 304 (1.4301)	painted steel sheet, white optional: polished stainless steel 304 (1.4301)
Weight	16.5 kg	17.2 kg
Cable glands / gland plates / enclosure drilling	Ex-e cable glands M25 x 1.5 (plastic), option: M20 x 1.5 metal thread <sup>2)</sup>	Ex-e cable glands M25 x 1.5 (plastic), option: M20 x 1.5 metal thread <sup>2)</sup>
Degree of protection accd. to EN 60529	IP65	IP65
Protective cover / protective bowl	single-safety glass pane of 5 mm thick	single-safety glass pane of 5 mm thick

<sup>1)</sup> depends on used lamps<sup>2)</sup> with dustcover if entry/thread is not closed



## Technical data

	RLF 250358	RLF 250458
EC-Type Examination Certificate	FTZU 06 ATEX 0050 X	FTZU 06 ATEX 0050 X
Marking accd. to 2014/34/EU	⊕ II 2 G Ex ed IIC T4 ⊕ II 2 D Ex tb IIIC T60 °C Db	⊕ II 2 G Ex ed IIC T4 Gb ⊕ II 2 D Ex tb IIIC T60 °C Db
Permissible ambient temperature	-20 °C up to +40 °C	-20 °C up to +40 °C
Rated voltage	220 - 250 V AC / 195 - 250 V DC	220 - 250 V AC / 195 - 250 V DC
Rated current	0.80 A	1.06 A
Frequency	50 - 60 Hz	50 - 60 Hz
Power factor cos φ	≥ 0.95	≥ 0.95
Circuit	EVG	EVG
Protection class	I	I
Lamp / Illuminant	3 x T26 / 58 W (T8)	4 x T26 / 58 W (T8)
Rated luminous flux	15600 lm <sup>1)</sup>	20800 lm <sup>1)</sup>
Lamp cap	G13 accd. to IEC 60061-1	G13 accd. to IEC 60061-1
Light output ratio	66 %	67 %
Dimensions (L x W x H)	1611 x 302 x 130 mm	1611 x 362 x 130 mm
Connecting terminals	L1, L2, L3, N, PE; max. 2 x 2.5 mm <sup>2</sup> through-wiring twin-ended	L1, L2, L3, N, PE; max. 2 x 2.5 mm <sup>2</sup> through-wiring twin-ended
Enclosure colour	white RAL 9010	white RAL 9010
Enclosure material	painted steel sheet, white optional: polished stainless steel 304 (1.4301)	painted steel sheet, white optional: polished stainless steel 304 (1.4301)
Weight	17.8 kg	19.8 Kg
Cable glands / gland plates / enclosure drilling	Ex-e cable glands M25 x 1.5 (plastic), option: M20 x 1.5 metal thread <sup>2)</sup>	Ex-e cable glands M25 x 1.5 (plastic), option: M20 x 1.5 metal thread <sup>2)</sup>
Degree of protection accd. to EN 60529	IP65	IP65
Protective cover / protective bowl	single-safety glass pane of 5 mm thick	single-safety glass pane of 5 mm thick

<sup>1)</sup> depends on used lamps<sup>2)</sup> with dustcover if entry/thread is not closed

## Technical data

	RLF 25018/18 N / RLF 25036/36 N	RLF 250418 N / RLF 250436 N
EC-Type Examination Certificate	FTZU 06 ATEX 0050 X	FTZU 06 ATEX 0050 X
Marking accd. to 2014/34/EU	⊕ II 2 G Ex d e ib mb IIC T4 Gb ⊕ II 2 D Ex tb IIIC T60 °C Db	⊕ II 2 G Ex d e ib mb IIC T4 Gb ⊕ II 2 D Ex tb IIIC T60 °C Db
Permissible ambient temperature	0 °C up to +40 °C (specified data)	0 °C up to +40 °C
Battery	3.6 V/4 Ah NC-Accu / 6 V/4 Ah NC-Accu	3.6 V/4 Ah NC-Accu / 6 V/4 Ah NC-Accu
Rated voltage	230 - 240 V AC	230 - 240 V AC
Rated current	0.20 A / 0.36 A	0.36 A / 0.68 A
Frequency	50 - 60 Hz	50 - 60 Hz
Charging duration	≥ 24 h	≥ 24 h
Power factor cos φ	≥ 0.95	≥ 0.95
Circuit	EVG with emergency lighting supply	EVG with emergency lighting supply
Protection class	I	I
Lamp / Illuminant	2 x T26 / 18 W (T8) / 2 x T26 / 36 W (T8)	4 x T26 / 18 W (T8) / 4 x T26 / 36 W (T8)
Rated luminous flux	2700 lm <sup>1)</sup> / 6700 lm <sup>1)</sup>	5400 lm <sup>1)</sup> / 13400 lm <sup>1)</sup>
Lamp cap	G13 accd. to IEC 60061-1	G13 accd. to IEC 60061-1
Light output ratio	70 %	70 %
Luminous flux in emergency operation (1.5 h, one lamp)	270 lm (20 %) / 603 lm (18 %)	270 lm (20 %) / 603 lm (18 %)
Luminous flux in emergency operation (3 h, one lamp)	216 lm (16 %) / 436 lm (13 %)	216 lm (16 %) / 436 lm (13 %)
Rated emergency lighting duration	1.5 h / 3 h	1.5 h / 3 h
Dimensions (L x W x H)	701 x 302 x 130 mm / 1312 x 302 x 130 mm	701 x 362 x 130 mm / 1312 x 362 x 130 mm
Connecting terminals	L, L1, L2, L3, N, PE; max. 2 x 2.5 mm <sup>2</sup> through-wiring twin-ended	L, L1, L2, L3, N, PE; max. 2 x 2.5 mm <sup>2</sup> through-wiring twin-ended
Enclosure colour	white RAL 9010	white RAL 9010
Enclosure material	painted steel sheet, white optional polished stainless steel	painted steel sheet, white optional polished stainless steel
Weight	8.9 kg / 14.9 kg	11.5 kg / 18.5 kg
Cable glands / gland plates / enclosure drilling	Ex-e cable glands M25 x 1.5 (plastic), option: M20 x 1.5 metal thread <sup>2)</sup>	Ex-e cable glands M25 x 1.5 (plastic), option: M20 x 1.5 metal thread <sup>2)</sup>
Degree of protection accd. to EN 60529	IP65	IP65
Protective cover / protective bowl	single-safety glass pane of 5 mm thick	single-safety glass pane of 5 mm thick

<sup>1)</sup> depends on used lamps<sup>2)</sup> with dustcover if entry/thread is not closed