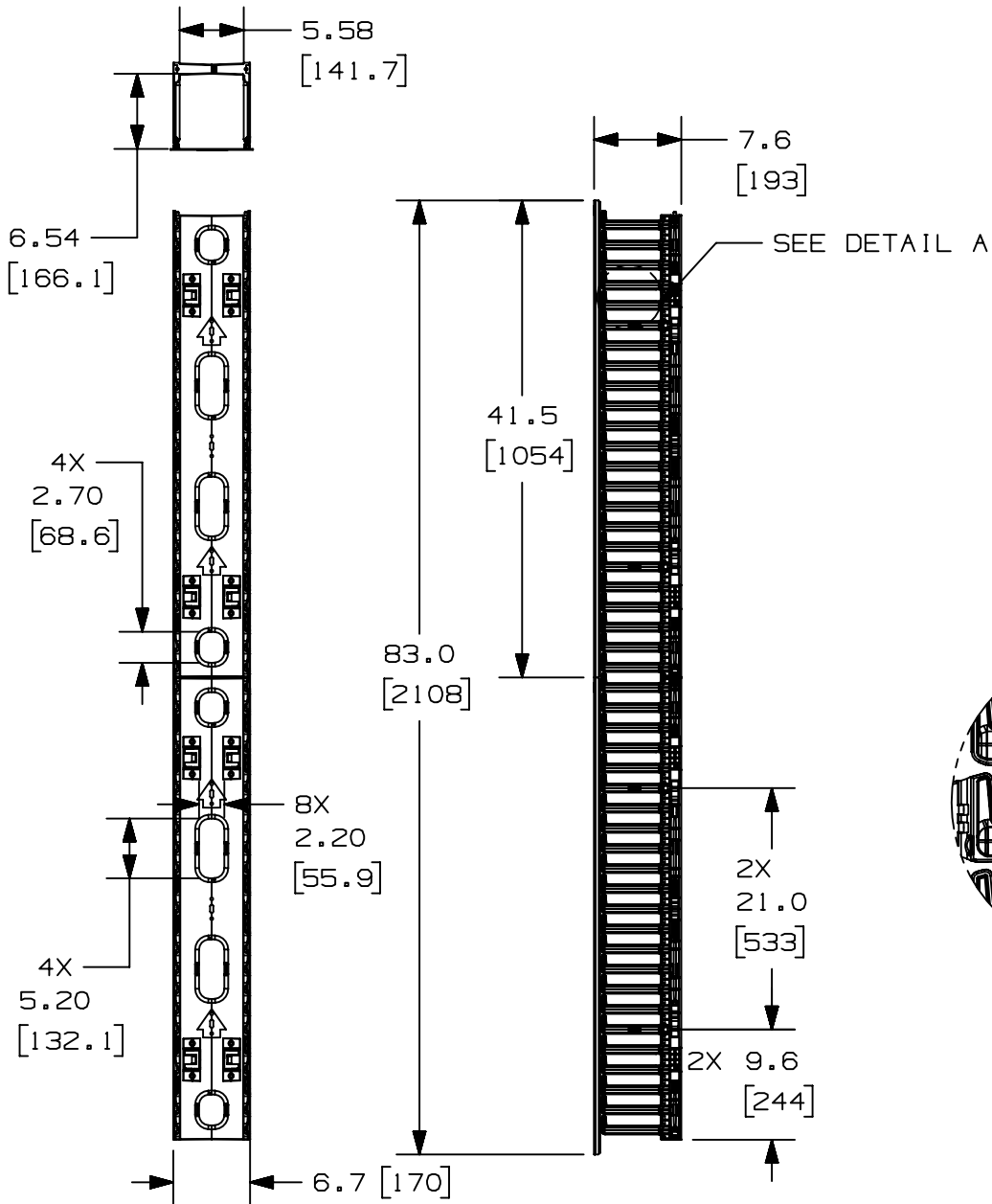


THIS COPY IS PROVIDED ON A RESTRICTED BASIS AND IS NOT TO BE USED IN ANY WAY DETRIMENTAL TO THE INTERESTS OF PANDUIT CORP.

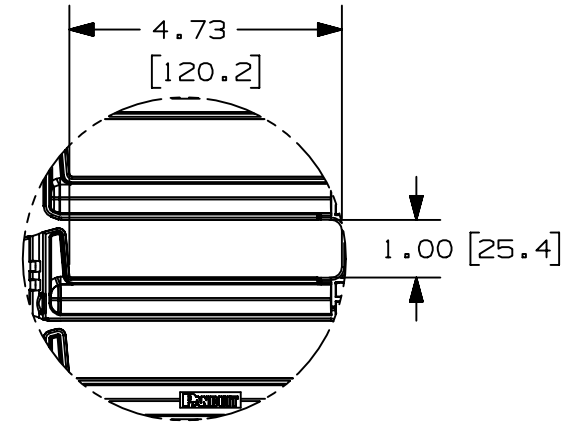
PANDUIT P/N	WEIGHT
WMPVHCF45E	18.0 LBS/EACH 8.16 Kg/EACH



NOTES:

- VISIT OUR ON-LINE CATALOG AT WWW.PANDUIT.COM FOR A CURRENT LIST OF PRODUCTS APPLICABLE FOR USE WITH THIS PART.
- COMPONENTS:
2- 22.5RU CABLE MANAGEMENT SECTIONS
2- 41.5" DUAL HINGE COVERS
4- MOUNTING BRACKETS
8- #12-24 X 1/2" SCREWS
- DIMENSIONS IN PARENTHESSES ARE METRIC.

MAX STORAGE TEMPERATURE 65° C (149° F)
MAX OPERATING TEMPERATURE 60° C (140° F)



DETAIL A

TITLE 6" WIDE FRONT ONLY VERTICAL CABLE MANAGER WMPVHCF45E				CUSTOMER DRAWING	
ITEM REVISION NAME V10225AH/05		PANDUIT			
DATASET FILE NAME V10225AH_DC/05B					
THIRD ANGLE PROJECTION					
MATERIAL CABLE MANAGER- ABS COVER- PVC		DRAWING NUMBER 10225-26			
DRAWN BY JDWE	DATE 3-15-05	CHK TCK	SCALE NONE	SHEET 1 OF 2	

A-SIZE CUSTOMER

05B	5-8-20	JBO	JCO	JEFK	ADDED TEMPERATURE NOTE	M09000LT
REV	DATE	BY	CHK	APR	DESCRIPTION	ECN

THIS COPY IS PROVIDED ON A RESTRICTED BASIS AND IS NOT TO BE USED IN ANY WAY DETRIMENTAL TO THE INTERESTS OF PANDUIT CORP.

2

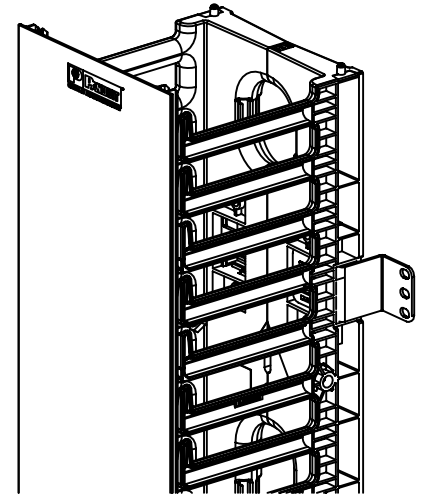
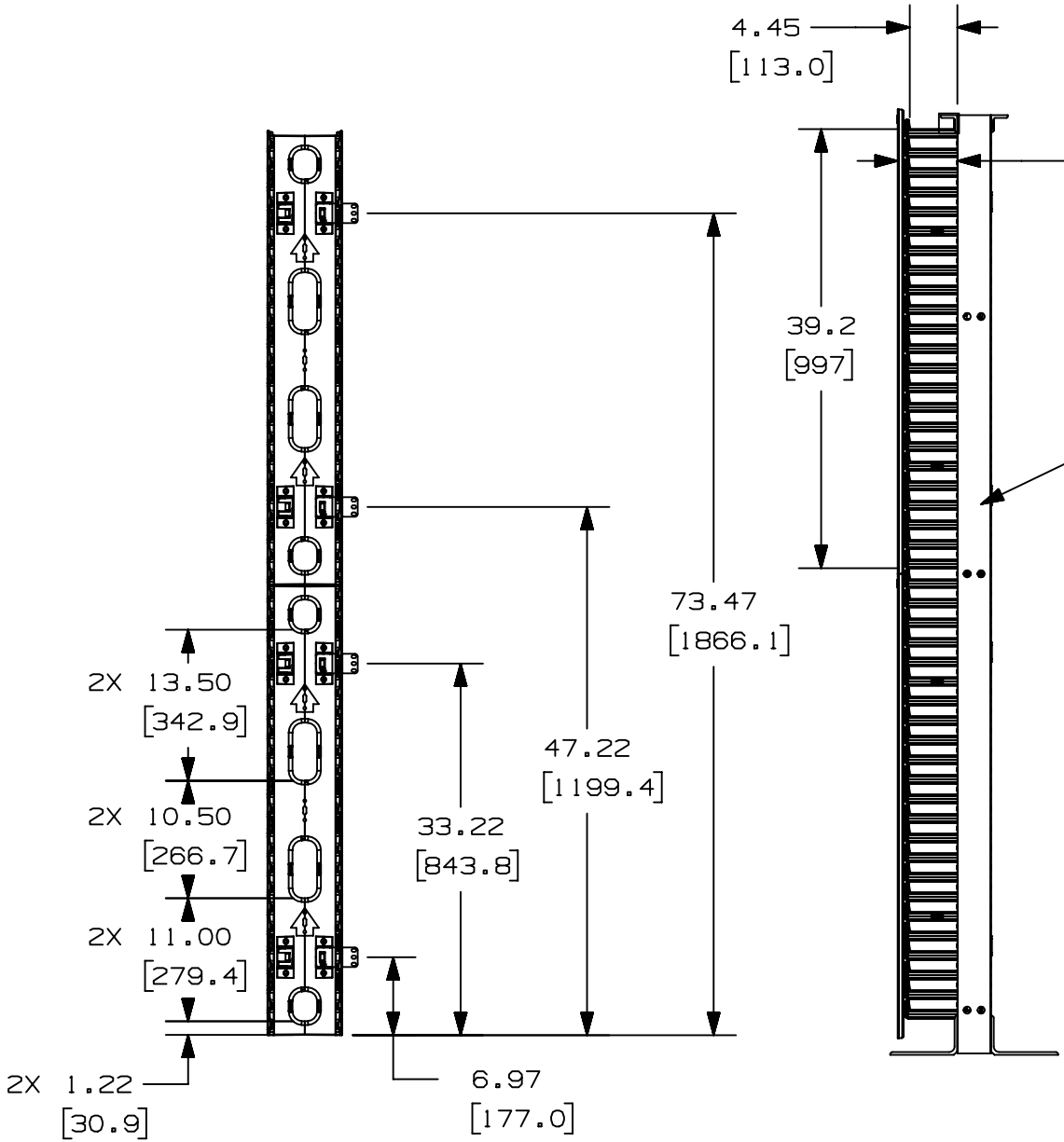
1

B

B

A

A



TITLE		6" WIDE FRONT ONLY VERTICAL CABLE MANAGER WMPVHCF45E		
ITEM REVISION NAME		CUSTOMER DRAWING		
DATASET FILE NAME		V10225AH/05		
MATERIAL		CABLE MANAGER- ABS COVER- PVC		
DRAWING NUMBER		10225-26		
DRAWN BY		DATE	CHK	SCALE
JDWE		3-15-05	TCK	NONE
SHEET 2 OF 2		A		

05B	5-8-20	JBO	JCO	JEFK	REFER TO SHEET 1 FOR REVISION CONTROL	M09000LT
REV	DATE	BY	CHK	APR	DESCRIPTION	ECN

2

1

A-SIZE CUSTOMER