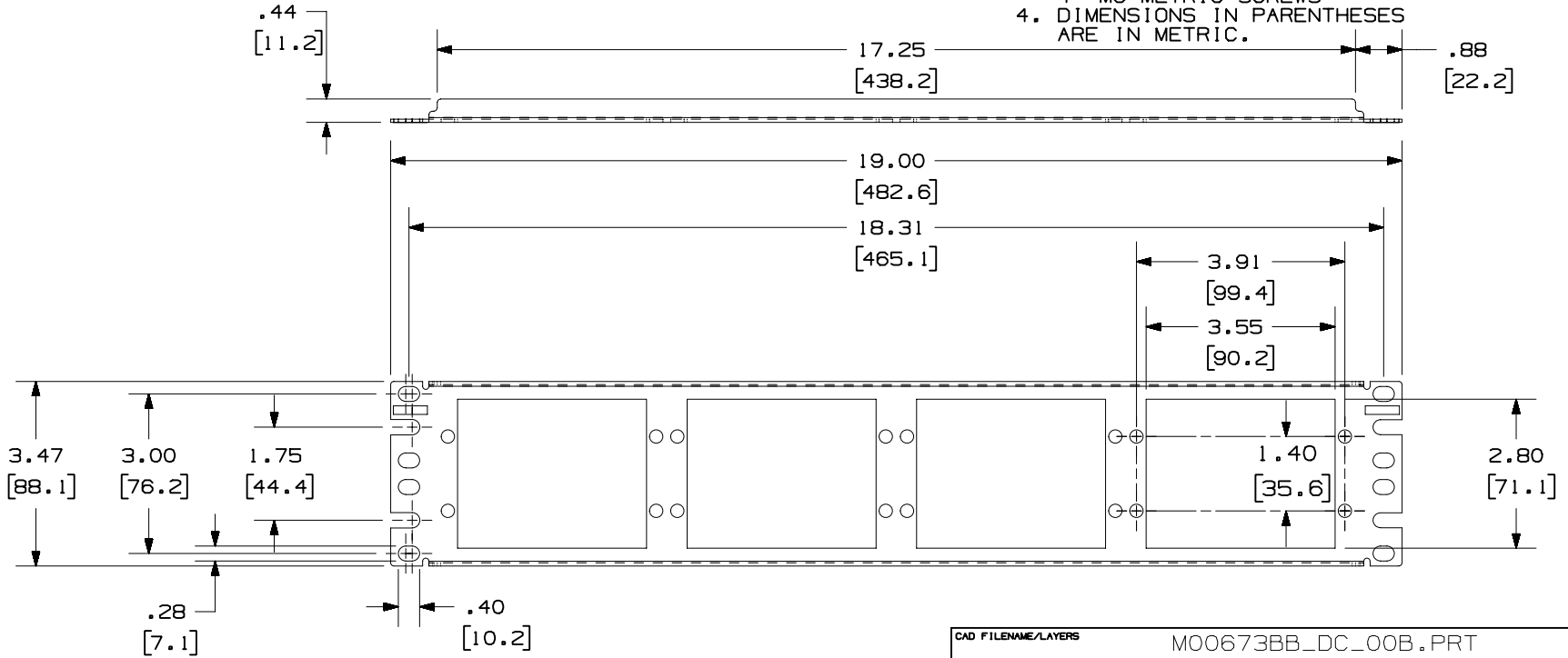


THIS COPY IS PROVIDED ON A RESTRICTED BASIS AND IS NOT TO BE USED IN ANY WAY DETRIMENTAL TO THE INTERESTS OF PANDUIT CORP.

PANDUIT PART NO.*	DESCRIPTION	WEIGHT
CFAPPBL2	2 RACK UNIT - FIBER ADAPTER PATCH PANEL	2.0 LB (909 g)

- NOTES:
- SEE CURRENT CATALOG FOR COMPLETE LIST OF PARTS APPLICABLE FOR USE WITH THIS PART.
 - THE PATCH PANEL IS DESIGNED FOR MOUNTING TO FMTDW48 TRAY OR 19" UNIVERSAL RACKS.
 - PARTS INCLUDED:
1- PATCH PANEL
4- 12-24 SCREWS
4- M6 METRIC SCREWS
 - DIMENSIONS IN PARENTHESES ARE IN METRIC.



CAD FILENAME/LAYERS M00673BB_DC_00B.PRT

PANDUIT CORP. TINLEY PARK, ILLINOIS

2 RACK UNIT - FIBER ADAPTER PATCH PANEL (CFAPPBL2) CUSTOMER DRAWING

UNLESS OTHERWISE SPECIFIED, DIMENSIONAL TOLERANCES ARE:
(.X) ±.13(3.3) (.XXX) ±
(.XX) ±.03(.8)

UNLESS OTHERWISE SPECIFIED, ALL DIMENSIONS ARE GIVEN IN INCHES, THIRD ANGLE PROJECTION.

REV	DATE	BY	CHK	DESCRIPTION	ECN - R	CUST	SUP
1	5-2-02	JDWE		A. REVISED NOTE 3- ADDED METRIC SCREWS	00673-17		
R	6-30-00	BAS	AFW	RELEASED TO PRODUCTION	00673-17	AFW	

DRAWN BY BAS
DATE 6-30-00
CHK'D AFW

MAT'L: 16 GA. C.R.S.

SCALE NONE
DRAWING NO. 00673-17
DWG SIZE A