

Part number

MZP 15 L225



Surface mounting housing, IL-BRID series,
with 1 lever, M25 x 2 cable entry, size "49.16"

Product description

Product type	Surface mounting housing
Series	IL-BRID
Closing type	With 1 lever
Size	Size 49.16
Cable entry	With cable entry M25 x 2

Technical data

IP degree of protection	IP65 / IP66 / IP69
--------------------------------	--------------------

Further technical details

Weight	160,00 g
Operating temperature range (min, max)	-40°C...+125°C

Material properties

Other materials	Lever: Polyamide (PA) and Stainless steel core
Colour	RAL 7040 grey
RoHs conformity	Compliant
China RoHs - EFUP	E
REACH SVHC substances	No

Approvals / Standards

UL	ECBT2
cUL	ECBT8

General ordering information

EAN13 code	8015747060479
eCl@ss 8.1	27440202
ETIM 7.0	EC000437

Packaging Information

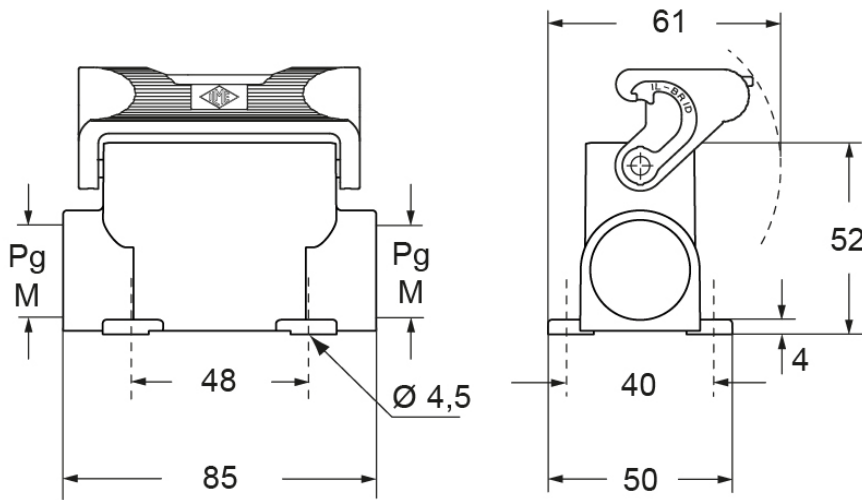
Packaging length	260,00 mm
Packaging height	120,00 mm
Packaging width	140,00 mm
Packaging weight	1,60 kg
Packaging volume	4,37 dm ³
Packaging description	Carton box
Packaging quantity	10 Pcs
Packaging EAN code	8015747172042
Sub-packaging weight	0,80 kg
Sub-packaging description	Plastic packaging
Sub-packaging quantity	5 Pcs
Sub-packaging EAN barcode	8015747172059

Part number

MZP 15 L225



Catalogue drawings



Notes

Dimensions shown in mm are not binding and may be changed without notice.