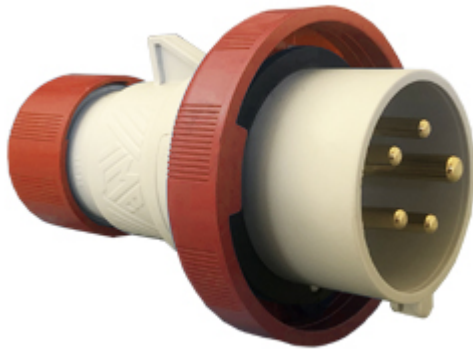



Part number

PEW 1665 SV



Mobile plug, PLUSO series, 3 poles + N + PE, 6 h (red), 16 A, 380 ÷ 415 V, straight

Product description		Material properties	
Product type	Plug Mobile	Colour	RAL 7035 grey, RAL 3000 red
Series	PEW...SV, PLUSO	RoHs conformity	Compliant with exemption 6(c): copper alloy containing up to 4% lead by weight
Connection type	Screw terminal connection	China RoHs - EFUP	50
N. of poles	3 poles + N + 	REACH SVHC substances	Yes Lead
Clock position	6	SCIP number	Ca7de37f-add8-4b77-9861-279c94903ade
Specification	Straight	Approvals / Standards	
Technical data		Reference standard	EN 60309-1 and -2
Current	16 A	General ordering information	
Voltage	380 ÷ 415 V	EAN13 code	8015747073110
IP degree of protection	IP67	Packaging Information	
Further technical details		Packaging length	330,00 mm
Weight	190,00 g	Packaging height	170,00 mm
Operating temperature range (min, max)	-25°C ... +40°C	Packaging width	352,00 mm
		Packaging weight	4,24 kg
		Packaging volume	19,75 dm ³
		Packaging description	Carton box
		Packaging quantity	20 Pcs
		Packaging EAN code	8015747073127

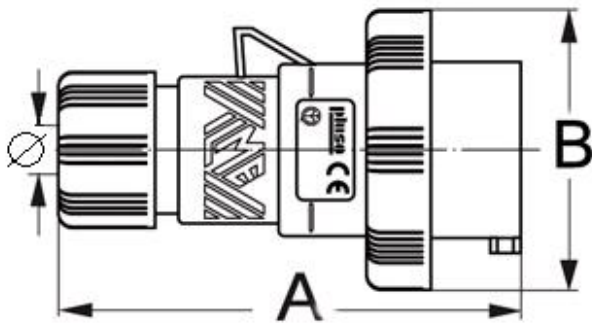
Part number

PEW 1665 SV



Catalogue drawings

(16 / 32A) PEW ... SV



PEW...SV	A	B	ø min	ø max
16A 2P+⊕	129	70	7	16
3P+⊕	129	77	7	16
3P+N+⊕	129	86	8	24
32A 2P+⊕	150	92	8	24
3P+⊕	150	92	8	24
3P+N+⊕	150	100	8	24

Notes

Dimensions shown in mm are not binding and may be changed without notice.

- Compliant with EN 60309-1 and -2
- Enclosure, insert and locking ring in insulating, thermoplastic, self-extinguishing material
- PE...SV types 16A and 32A (IP44), entry with cable gland colour coded according to the operating voltage, RAL 7035 grey enclosure
- PEW...SV types 16A and 32A (IP66/IP67), entry with cable gland colour coded according to the operating voltage, RAL 7035 grey enclosure, locking ring with gasket colour coded according to operating voltage
- PEW...SV types 63A and 125A (IP67), entry with cable gland, RAL 7035 grey enclosure, locking ring with gasket colour coded according to operating voltage

- PEW...SV types 63A and 125A (IP67), cable anchoring collar incorporated in the insert
- SIP version with phase inverter (3P+N+E, h6), 16A and 32A
- Terminals with retained screws
- 63A, 125A: with pilot contact
- Nickel-plated contacts standard on 63A and 125A (on 16A and 32A only version PHW...SV)