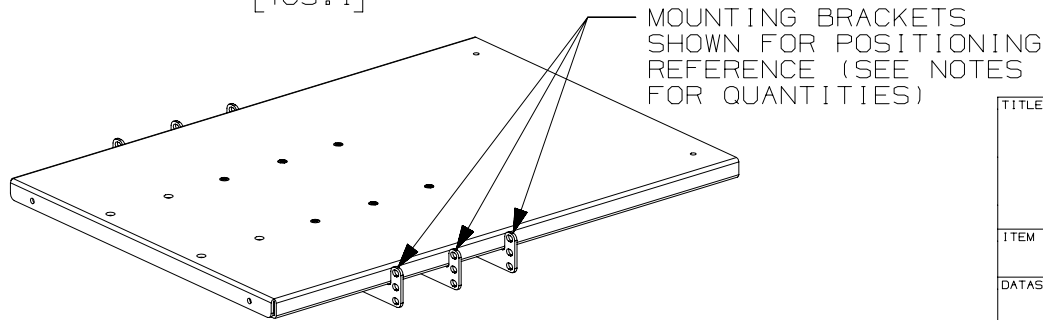
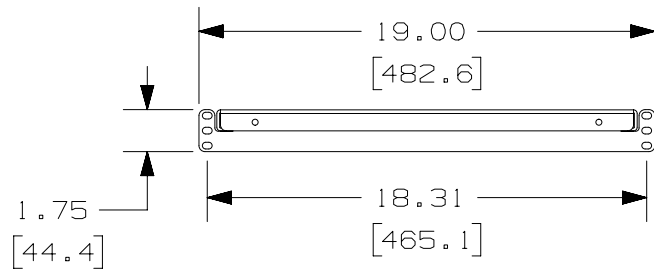
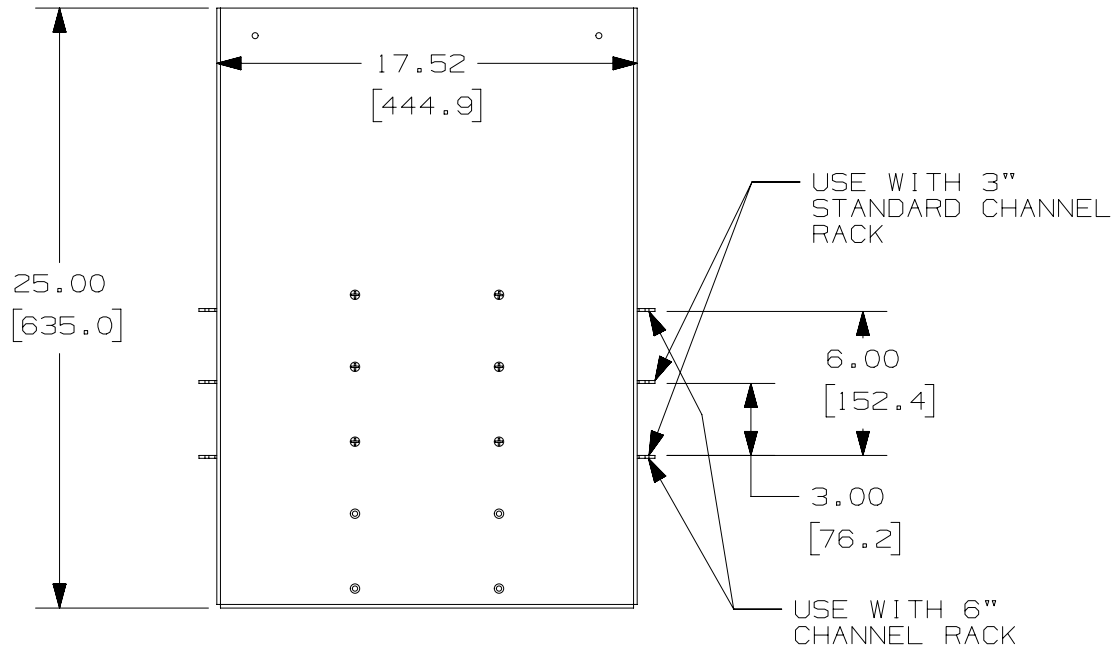


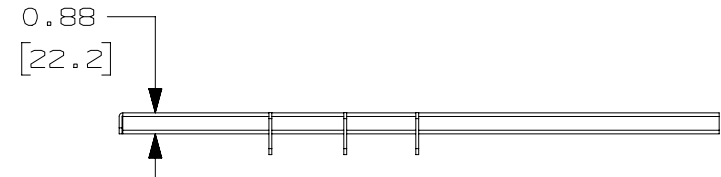
THIS COPY IS PROVIDED ON A RESTRICTED BASIS AND IS NOT TO BE USED IN ANY WAY DETRIMENTAL TO THE INTERESTS OF PANDUIT CORP.



| PANDUIT PART NO. | WEIGHT                       |
|------------------|------------------------------|
| SRM19X25A1       | 21.1 LBS/EACH<br>9.6 Kg/EACH |

NOTES:

- VISIT OUR ON-LINE CATALOG AT WWW.PANDUIT.COM FOR A LIST OF CURRENT PARTS APPLICABLE FOR USE WITH THIS PRODUCT.
- COMPONENTS:
  - 1- SHELF
  - 2- MOUNTING BRACKETS
  - 4- #10-32 X 3/8" UNDERCUT SCREWS
  - 8- #12-24 X 1/2" SCREWS
- SHELF CAN BE ADJUSTED TO 2 POSITIONS FOR 3" CHANNEL RACK AND 3 POSITIONS FOR 6" CHANNEL RACK.
- DIMENSIONS IN PARENTHESIS ARE METRIC
- LOAD CAPACITY OF 250 LBS.



| TITLE   |  |          |  |     |                 |       |  |      |  |
|---|--|----------|--|-----|-----------------|-------|--|------|--|
| <b>19" X 25" ADJUSTABLE RACK MOUNT SHELF (SRM19X25A1)</b> |  |          |  |     |                 |       |  |      |  |
| CUSTOMER DRAWING  |  |          |  |     |                 |       |  |      |  |
| ITEM REVISION NAME  |  |          |  |     | V10254AB/04     |       |  |      |  |
| DATASET FILE NAME   |  |          |  |     | V10254AB_DC/04A |       |  |      |  |
| UNLESS OTHERWISE SPECIFIED, DIMENSIONAL TOLERANCES ARE:   |  |          |  |     | MATERIAL:       |       |  |      |  |
|   |  |          |  |     | STEEL           |       |  |      |  |
|   |  |          |  |     | DRAWING NUMBER: |       |  |      |  |
|   |  |          |  |     | 10254-04-DC     |       |  |      |  |
| DRAWN BY  |  | DATE     |  | CHK |                 | SCALE |  | SIZE |  |
| TKW   |  | 10-19-04 |  |     |                 | NONE  |  | A    |  |

| REV | DATE     | BY  | CHK  | APR  | DESCRIPTION  | ECN         |
|-----|----------|-----|------|------|--|-------------|
| 04A | 9-19-16  | TWV | JEFK | KRKE | REMOVED M6 SCREWS; ADDED 6" CHANNEL RACK POSITIONING | 10254-04-DC |
| R   | 10-19-04 | TKW | JEFK | KRKE | RELEASED TO PRODUCTION                               | 10254-04    |