

Tige filetée M8 + 2 Ecrans HE M8
(Threaded rod M8 + 2 Nut M8)

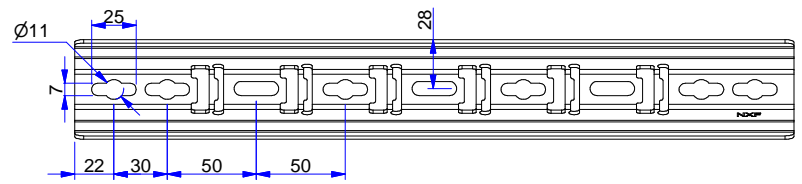
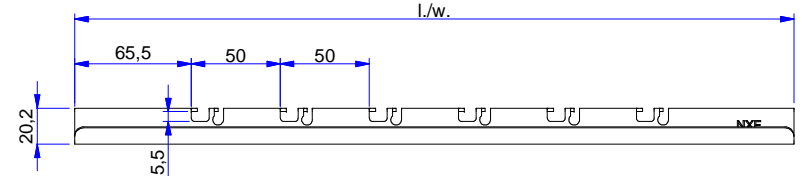
Agrafitol

Chemin de câbles tôle
(Cable tray)

BP TRCC M6x12 HE

Tige filetée M8 + 2 Ecrans HE M8
(Threaded rod M8 + 2 Nut M8)

Chemin de câbles fil
(Mesh tray)



Description	Code	Masse/Weight Kg/p	Ep./Th. mm	l./w. mm
Balancelle S100U 100 SZ	747201	0,260	2,00	204
Balancelle S100U 150 SZ	747202	0,320	2,00	254
Balancelle S100U 200 SZ	747203	0,380	2,00	304
Balancelle S100U 300 SZ	747204	0,500	2,00	404
Balancelle S100U 400 SZ	747205	0,620	2,00	504
Balancelle S100U 500 SZ	747206	0,740	2,00	604
Balancelle S100U 600 SZ	747207	0,860	2,00	704

G : Pre-galvanised according to NF EN 10346 (S220 GD / Z).
SZ : Tôle d'acier galvanisé avant fabrication suivant NF EN 10346 (S220 GD / Z).



www.niedaxfrance.fr

BALANCELLE S100U SZ DOUBLE HANGING SYSTEM S100U G		
ASSISTANCE TECHNIQUE +33 (0)1 55 95 92 17 pole.technique@niedax.fr		
FT02173		