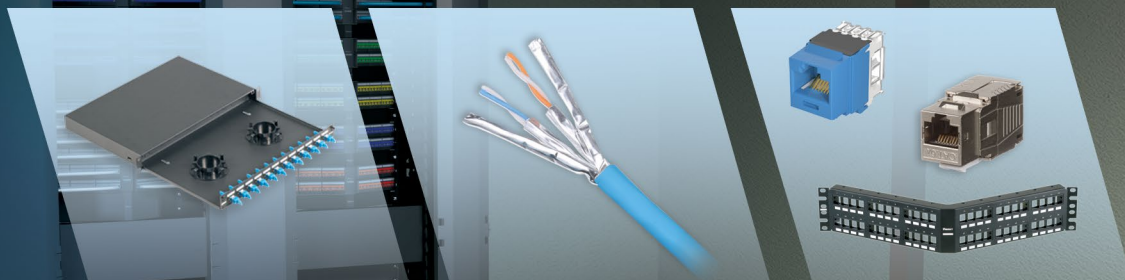


# More Meaningful Connections



## NetKey™ Cabling System – EMEA

## NetKey™ Cabling System

The NetKey™ Copper and Fibre Cabling System provides a complete, standards compliant cabling infrastructure solution for voice, data and video applications. NetKey™ Modules feature the universal “keystone” design and are compatible with a wide assortment of modular patch panels, faceplates, and surface mount boxes. When teamed with complementary Panduit products, the NetKey™ Solutions cover all your needs from the telecommunication room to the work area with the proven innovation and quality you depend on from Panduit.



### NetKey™ Jack Modules, Patch Cords, and Copper Cable

Pages 4 – 5



### NetKey™ Modular Patch Panels

Pages 5 – 6



### NetKey™ Faceplates and NetKey™ Stainless Steel Faceplates

Pages 7 – 8





**Faceplate Frames and Inserts, NetKey™ Furniture Faceplates and Surface Mount Boxes**

Page 7



**NetKey™ Audio/Video Modules and Inserts**

Page 8



**Shielded Keystone Jacks, Patch Panels, Outlets and Copper Cable**

Page 10



**TX6A™ 10Gig Copper Patch Cords and Shielded Copper Cable**

Page 11



**NetKey™ Fiber Optic Enclosures and Adapter Modules**

Page 12



**NetKey™ Fiber Optic Patch Cords and Pigtails**

Page 13



**Racks and Cable Management**

Pages 14 – 15

## NetKey™ Category 6A, 6, and 5e Jack Modules

- Meet industry performance standards for Category 6A, 6, and 5e
- Punchdown Jack Modules are 100% performance tested and individually serialized for future traceability
- Keystone punchdown jacks meet ANSI/TIA-568.2-D and ISO 11801 component requirements
- Snap in and out of keystone openings for easy moves, adds, and changes
- Universal label includes T568A and T568B wiring schemes



Part Number	Performance Level	Termination Style	Color
NK6X88MBU	Category 6A	Punchdown	Blue
NK6X88MBU-Q			
NK688MBU	Category 6		
NK688MBU-Q			
NKP5E88MBU			
NKP5E88MBU-Q	Category 5e		
NK5E88MBUY			

Termination tools can be found on page 11. Replace 'BU' with: AW (Arctic White), BL (Black), EI (Electric Ivory), GR (Green), IG (International Grey), IW (International White), OR (Orange), RD (Red), VL (Violet), WH (White), YL (Yellow). Available color options may vary.

## NetKey™ Category 6A, 6, and 5e Unshielded Copper Cable

- Small diameter allows for improved pathway capacity, tighter bend radius and increased flexibility and ease during installation
- Third party tested by an independent laboratory and complies with the electrical channel requirements of ANSI/TIA-568.2-D and ISO 118011
- Complies with IEEE 802.3af, IEEE 802.3at and IEEE 802.3bt for PoE applications



Part Number	Gauge (AWG)	Flammability Rating	Color
<b>Category 6A U/UTP 4 Pair Copper Cable</b>			
NUL6X04BU-HEG	23	LSZH (IEC 60332-1), Dca-s2,d2,a1	Blue
NUL6X04BU-VEG		LSZH (IEC 60332-1), Dca-s2,d2,a1	
NUY6X04BU-HEG		LSZH (IEC 60332-1 and -3-22), Cca-s1a,d0,a1	
NUW6X04BU-HEG		LSZH (IEC 60332-1), B2ca-s1a,d0,a1	
<b>Category 6 U/UTP 4 Pair Copper Cable</b>			
NUC6C04BU-FE	24	CM, Eca	Blue
NUZ6C04BU-KE		LSZH (IEC 60332-1 and -3-22), Dca-s2,d2,a1	
NUY6C04BU-FE		LSZH (IEC 60332-1), Cca-s1a,d0,a1	
<b>Category 6 U/UTP 4 Pair Copper Cable - Reduced Diameter</b>			
NUL6CR04BU-CE	24	LSZH (IEC 60332-1), Eca	Blue
<b>Category 5e U/UTP 4 Pair Copper Cable</b>			
NUL5C04BU-CE	24	LSZH (IEC 60332-1), Eca	Blue

Available options may vary; please see panduit.com for details.

## NetKey™ Category 6A, 6, and 5e U/UTP Copper Patch Cords

- Meet industry performance standards for Category 6A, 6, and 5e
- Available in a variety of colors and lengths for design flexibility
- 100% performance tested



NK6APC3MBU



NK5EPC3MBUY

Part Number	Performance Level	Lengths (m)	Color
NK6APC3MBU	Category 6A	1-5, 7, 10	Blue
NK6PC3MBUY	Category 6		
NK5EPC3MBUY	Category 5e		

Replace '3' in the part number with the desired cord length (in meters). Replace 'BU' with: BL (Black), GR (Green), leave blank for International White, OR (Orange), RD (Red), YL (Yellow). Available length and color options may vary.

## NetKey™ Modular, Flush Mount, and Punchdown Patch Panels

- Modular patch panels accept NetKey Modules, which snap in and out for easy moves, adds, and changes
- Select modular patch panels have a front access design that includes faceplates with easy snap release feature
- Angled style facilitates proper bend radius control and minimizes the need for horizontal cable managers



NKFP12W



NKFP24Y



NKFP48Y

Part Number	Ports	No. of Rack Units	Identification
<b>Modular Patch Panels</b>			
NKFP12W	12	—	Adhesive
NKFP24Y	24	1	
NKFP48Y	48	2	
NKFPL24	24	1	Label Pocket
NKFPL48	48	2	
NKFPA24	24	1	Adhesive
NKFPA48	48	2	
NKFPAL24	24	1	Label Pocket

## NetKey™ Modular, Flush Mount, and Punchdown Patch Panels



NKPPA48FMY



NK6XPPG24Y



NKA6XPPG24Y



NK6PPG12WY

Part Number	Ports	No. of Rack Units	Color
<b>Flush Mount Patch Panels</b>			
NKPP24FMY	24	1	Black
NKPP48FMY	48	2	
NKPPA24FMY	24	1	
NKPPA48FMY	48	2	
NKPP48HDY	48	1	
NKPPA48HDY	48	1	
NKPP24FMWH	24	1	White
NKPP48FMWH	48	2	
NKPPA24FMWH	24	1	
NKPPA48FMWH	48	2	
NKPP48HDWH	48	1	
NKPPA48HDWH	48	1	

<b>Category 6A Punchdown Patch Panels</b>			
NK6XPPG24Y	24	1	Black
NK6XPPG48Y	48	2	
NKA6XPPG24Y	24	1	
NKA6XPPG48Y	48	2	

<b>Category 6 Punchdown Patch Panels</b>			
NK6PPG24Y	24	1	Black
NK6PPG48Y	48	2	
NK6PPG12WY	12	—	
NKA6PPG24Y	24	1	
NKA6PPG48Y	48	2	

<b>Category 5e Punchdown Patch Panels</b>			
NK5EPPG24Y	24	1	Black
NK5EPPG48Y	48	2	
NK5EPPG12WY	12	—	
NKA5EPPG24Y	24	1	
NKA5EPPG48Y	48	2	

Termination tools can be found on page 11.

## Patch Panel Accessories



WB89D



SRB19BLY



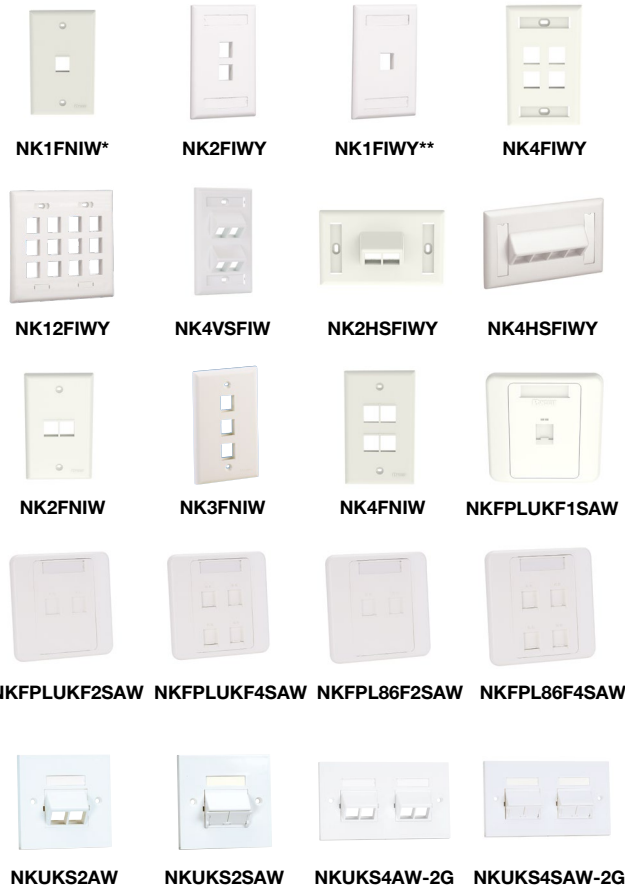
SRBM19BLY

Part Number	Type	Style	Color
SRB19BLY	Strain Relief Bar	Extended	Black
SRB19D5BL		Deep	
SRB19D7BL		Deep	
SRBBRKT	Mounting Bracket	Quick Release	
CPAF1BLY	Filler Panel	Angled	
CPAF2BLY			
CPATCBL	Transitional Cover		
WB89D	Bracket	89D	White

## NetKey™ Faceplates

- Accept all NetKey Modules
- Replacement label/label covers available for select products

- Non-label faceplates include screws with matching color head screws



Part Number	Ports	Style	Identification
NK1F**Y	1	Flat	Label Pocket
NK2F**Y	2		
NK4F**Y	4		
NK6F**Y	6		
NK8F**Y	8		
NK12F**Y	12		
NK4VSF**	4	Vertical, Sloped	Adhesive
NK2HSF**Y	2	Horizontal, Sloped	
NK4HSF**Y	4		
NK1FN**	1	Flat	
NK2FN**	2		
NK3FN**	3		
NK4FN**	4		
NKFPL86F1SAW^	1	Flat, Shuttered	Label Pocket
NKFPL86F2SAW^	2		
NKFPL86F4SAW^	4		
NKFPLUKF1SAW^^	1		
NKFPLUKF2SAW^^	2		
NKFPLUKF4SAW^^	4		
NKUKS2AW	2	Sloped	Label Pocket
NKUKS4AW-2G	4		
NKUKS2SAW	2	Sloped, Shuttered	
NKUKS4SAW-2G	4		

^Supplied with M4.0-0.7x25mm panhead mounting screws.

^^Supplied with M3.5-0.5x30mm panhead mounting screws.

Replace '\*\*' with appropriate two-character color designation: BL (Black), EI (Electric Ivory), IG (International Grey), IW (International White), WH (White). Available options may vary.

## NetKey™ Stainless Steel Faceplates

- Impact-resistant 304 stainless steel for light industrial environments



Part Number	Ports	Style	Identification
NKF2S	2	Flat	Label Pocket
NKF4S	4		
NKF6S	6		

## NetKey™ Phone Faceplates



KWPY



KWP5EY  
KWP6PY

Part Number	Ports	Style	Performance Level
KWPY	1	Accepts 1 NetKey Module	—
KWP6PY		Punchdown	Category 6
KWP5EY			Category 5e

Termination tools can be found on page 11. Compatible with wall mountable phones with short patch cord connections to the jack module.

## NetKey™ Faceplate Inserts and Frames



NKHS2IW-X



NKHS2SIW-X



CHB2MIW-X

Part Number	Ports	Style	Size
<b>Inserts and Blank Modules</b>			
NKHS2**-X	2	Sloped	1/2
NKHS2S**-X		Sloped, Shuttered	
<b>Frames</b>			
CBFAW	Single Gang	—	1/2
CBUKAWY			

Replace '\*\*' with appropriate two-character color designation: AW (Arctic White), BL (Black), EI (Electric Ivory), IG (International Grey), IW (International White), WH (White). Available options may vary.

## NetKey™ Faceplate Adapters



NK6CSAW-X



NK6CSSAW-X



NKFS2AW



NKFS2SAW

Part Number	Ports	Style	Identification
NKFA1SAW-X	1	Flat, Shuttered	Label Pocket
NK6CSAW-X			Adhesive
NK6CSSAW-X		Sloped, Shuttered	
NKFS2AW	2	Sloped	Adhesive
NKFS2SAW		Sloped, Shuttered	

Replace '\*\*' with appropriate two-character color designation: AW (Arctic White), BL (Black), EI (Electric Ivory), IG (International Grey), IW (International White), WH (White). Available options may vary.



## NetKey™ Audio/Visual Modules and Inserts



NKFIW



NK35MSSIW



NK35MSCIW



NKHDMIW



NKUSBAAIW



NKBMIW-X

Part Number	Description
<b>Modules</b>	
NKF**	Keystone F-type 3 Ghz coupler module.
NK35MSS**	Keystone 3.5mm (1/8") stereo solder type headset connector.
NK35MSC**	Keystone 3.5mm (1/8") stereo headset connector.
NKHDM**	Keystone HDMI 2.0 Type A female to female coupler module.
NKUSBAA**	Keystone USB 2.0 female A to female A coupler.
NKBM**-X	Blanks Out 1 Port.

Replace \*\* with appropriate two-character color designation: AW (Arctic White), BL (Black), EI (Electric Ivory), IG (International Gray), IW (International White), WH (White). Available options may vary.  
 Inserts are intended for use with CBE\*\*Y and CBE\*\*-2GY frames.

## NetKey™ Surface Mount Boxes

- Mount easily with supplied mounting screws, adhesive tape, or optional magnet
- Cable entry from side knockouts



Part Number	Ports	Style	Identification
NK2BX**-A	2	Elongated	Adhesive
NK4BX**-AY	4		Label Pocket
NK6BX**-AY	6	Elongated with Fiber Spool	Adhesive

Replace \*\* with appropriate two-character color designation: AW (Arctic White), BL (Black), EI (Electric Ivory), IG (International Gray), IW (International White), WH (White). Available options may vary.

## NetKey™ Furniture Faceplates

- Compatible with standard furniture opening



NK4MFABL

Part Number	Style	Color	Identification
NK4MF**	Flat	Black	Adhesive
NK4MFLBL			Label Pocket
NK4MFABL	Sloped		Adhesive

Replace \*\* with appropriate two-character color designation: AW (Arctic White), BL (Black), EI (Electric Ivory), IG (International Gray), IW (International White), WH (White). Available options may vary.

## Keystone Shielded Jacks



KJS6X88TC



KJS6X88TCBL



KJS6X88TCBU

Part Number	Performance Level	Termination Style	Color
KJS6X88TC	Category 6A	TG	Metal
KJS6X88TCBU			Blue
KJS6X88TCBL			Black

For use with Keystone shielded patch panels and KFPL Keystone outlets.  
May not work with some NetKey™ Outlets and Patch Panels.

## Keystone Shielded Patch Panels



KPS24BL



KP24WSBL



KPA24WSBL



KP24APWSBL



KPA48WSBL

Part Number	Ports	No. of Rack Units	Identification
KPS24BL	24	1	Label Pocket
KP24WSBL			
KPA24WSBL			
KP24APWSBL			
KPA48WSBL	48	2	None

For use with Keystone shielded jacks only.

## Keystone Shielded Outlets



KFPL80S2SWH



KFPL86S2SWH

Part Number	Ports	Style	Identification
KFPL80S2SWH	2	Sloped	Label Pocket
KFPL86S2SWH			

For use with Keystone shielded jacks only.

## TX6A™ 10 Gig Shielded Copper Patch Cords



STP6X3MIG

Part Number	Conductor Gauge (AWG)	Cable Diameter In. (mm)	Jacket Type
STP6X^M**	26	0.24 (6.1)	CM/LSZH

See panduit.com for available length (^) and color (\*\*) options.

## NetKey Category 6A Shielded Copper Cable

- Small diameter allows for improved pathway capacity, tighter bend radius and increased flexibility and ease during installation
- Third party tested by an independent laboratory and complies with the electrical channel requirements of ANSI/TIA-568.2-D and ISO 11801

- Complies with IEEE 802.3af, IEEE 802.3at and IEEE 802.3bt for PoE applications



NFFY6X04BU-HED

Part Number	Gauge (AWG)	Flammability Rating	Color
<b>Category 6A F/FTP 4 Pair Copper Cable</b>			
NFFY6X04BU-HED	23	LSZH (IEC 60332-1), Cca-s1a,d0,a1	Blue

Available options may vary. See panduit.com for details.

## Termination Tools



PDT110



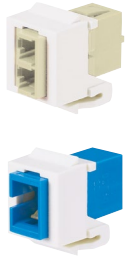
CJT



NKSPB

Part Number	Description
<b>Pan-Punch™ Termination Tool</b>	
PDT110	Single pair punchdown tool and blade.
PDTH110	Replacement blade for single pair punchdown tool (PDT110).
NKSPB	Base used to assist in terminating punchdown modules.
<b>NetKey™ Jack Module Termination Tools</b>	
CJT	Leadframe module termination tool.

## NetKey™ Fiber Optic Adapters

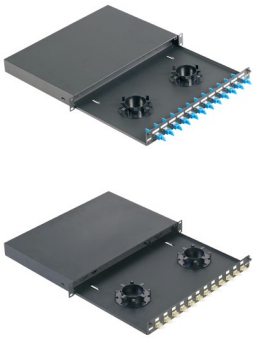


Part Number	Adapter Type	Alignment Sleeve
NKDLCMZ**	Duplex LC	Zirconia Ceramic
NKSCMZ**	Simplex SC	

## NetKey™ Fiber Optic Enclosures

- Slide-out drawer slides forward a full 300mm for service access to all fiber terminations, connections, and/or splices
- Mounting hardware and fiber routing accessory kit included
- Supports fusion splicing with appropriate slack storage and cable management provisions

- Simple two-piece, all-metal body construction for easy and economical installation with no loose components to misplace; improved protection over plastic fiber drawers



Part Number	Adapter Type	Fiber Type	Number of Adapters
NKFD1W12BUDLCZ	LC Duplex	Singlemode	12
NKFD1W24BUDLCZ			24
NKFD1W6BUDSCZ	SC Simplex		6
NKFD1W12BUDSCZ			12

## NetKey™ Fiber Optic Patch Cords and Pigtails

- Compliant with ANSI/TIA 568-D.3-1 and ISO/IEC 11801
- 100% performance testing assures that patch cords and pigtails are standards compliant
- Q.C. identification label quality control reference provides lifetime traceability of test data



Part Number	Performance	Connectorization	Jacket
<b>9µm Singlemode Patch Cords</b>			
NKFP92ERLLSM***	OS2	Duplex LC to Duplex LC	OFNR (Riser)
NKFP92ERLSSM***		Duplex LC to Duplex SC	
NKFP923RSSSM***		Duplex SC to Duplex SC	
NKFP923R22SM***		ST to ST	
<b>50µm Multimode Patch Cords</b>			
NKFPX2ERLLSM***	OM3	Duplex LC to Duplex LC	OFNR (Riser)
NKFPX2ERLSSM***		Duplex LC to Duplex SC	
NKFPX23RSSSM***		Duplex SC to Duplex SC	
NKFPX23R22SM***	ST to ST		
NKFPZ22RLLSM***	OM4	Duplex LC to Duplex LC	
<b>9µm Singlemode Pigtail Cords</b>			
NKFP91BN1NNM***	OS2	LC to 900µm Pigtail	—
NKFP91BN3NNM***		SC to 900µm Pigtail	
NKFP91BN2NNM***		ST to 900µm Pigtail	
<b>50µm Multimode Pigtail Cords</b>			
NKFPX1BN1NNM***	OM3	LC to 900µm Pigtail	—
NKFPX1BN3NNM***		SC to 900µm Pigtail	
NKFPX1BN2NNM***		ST to 900µm Pigtail	
NKFPZ1BN1NNM***	OM4	LC to 900µm Pigtail	
<b>9µm Singlemode Pigtail Kits</b>			
NKFP91BN1NKM***	OS2	12-Color LC to 900µm Pigtail Set	—
<b>50µm Multimode Pigtail Kits</b>			
NKFPX1BN1NKM***	OM3	12-Color LC to 900µm Pigtail Set	—

\*\*\*See panduit.com for available length options.

## Racks



R2P

Part Number	Height In. (mm)	Width In. (mm)	Depth In. (mm)	No. of Rack Units	Equipment Rails	Load Capacity Lbs.	Color
R2P	84.0 (2134)	20.3 (516)	3.0 (76)	45	#12-24 Threaded	1000	Black
R4P		23.3 (591)	30.0 (762)			2500	

## Cable Managers

- Cable management products and accessories maintain bend radius control and cable performance while bundling and securing cable to prevent snags and stress from over-bending



WMPV45E



WMP1E



WMPFSE



CMPH1



CMPH2



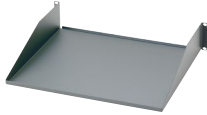
CMPHF1

Part Number	Description	Height In. (mm)	Width In. (mm)	Depth In. (mm)	No. of Rack Units	Color
WMPFSE	NetRunner™ Horizontal Cable Manager, front only.	1.70 (44.1)	19.0 (483)	3.7 (93.7)	1	Black
WMPV45E	NetRunner™ Front and Rear Vertical Cable Manager with dual hinged cover, wire retainers, and side mount brackets.	83.0 (2108)	4.90 (125)	12.0 (306)	45	
WMPSE	PatchLink™ Front and Rear Horizontal Cable Manager with dual hinged cover.	1.70 (44.1)	19.0 (483)	8.90 (226)	1	
WMP1E	PatchLink™ Front and Rear Horizontal Cable Manager with dual hinged cover.	3.50 (88.9)			2	
CMPH1	OpenAccess™ Front and Rear Horizontal Cable Manager with optional snap-on cover.	1.72 (4.37)	19.0 (483)	8.60 (218)	1	
CMPH2	OpenAccess™ Front and Rear Horizontal Cable Manager with optional snap-on cover.	3.47 (88.1)			2	
CMPHF1	OpenAccess™ Front only Horizontal Cable Manager with optional snap-on cover, single sided.	1.70 (44.0)			1	

## Rack Mount Shelves



SRM19FM1



SRM19FM2

Part Number	No. of Rack Units	Load Rating Lbs.	Material	Color
SRM19FM1	1	30	Steel	Black
SRM19FM2	2	50		

## Grounding



RGS134-1Y



GPQC10-1/0



RGCBNJ660P22

Part Number	Description
RGS134-1Y	Rack grounding strip provided with 5cc of antioxidant, one grounding sticker, and three M6 x 12mm and #12-24 x 1/2" thread-forming screws. Dimensions: 78.65" (2mm) L x 0.67" (17mm) W x 0.05" (1.27mm) D.
GPQC10-1/0	Access floor grounding clamp for 7/8" square, 1" round, and 1-1/8" round pedestals.
RGCBNJ660P22	Jumper Kits, Common Bonding Network (CBN), #6 AWG (16mm <sup>2</sup> ) Jumper, 60 (1.52m) L.



**PANDUIT™**

Panduit International Corp.  
Office 2305, Al Shata Tower  
P.O. Box 500537,  
Dubai Media City  
United Arab Emirates

Phone: +971 4 3616933  
Fax: +971 4 3908830

Panduit Europe Limited  
12A, 12th Floor,  
Al Mana Twin Towers  
C-Ring Road, P.O. Box 37922  
Doha, Qatar

Phone: +974 4491 0383  
Fax: +974 4491 0384

Panduit Europe Ltd  
Office 4, 1st floor,  
Aknaz Centre  
Tahlia Street, P.O. Box 66847  
Riyadh 11586, Saudi Arabia

Phone: +966 11 481 8200  
Fax: +966 11 462 3746

Panduit Europe Ltd  
Barbaros Mah. Dereboyu Cd.  
Karanfil Sk., Kent Plus E2  
Blok D33  
Istanbul 34746, Turkey

Phone: +902166880301  
Fax: +90216680302

[www.panduit.com](http://www.panduit.com)