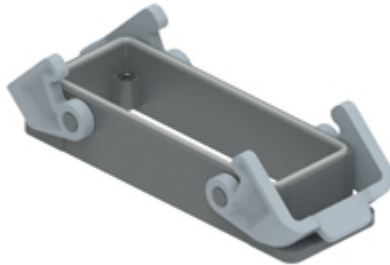


Part number

THIW 24



Bulkhead mounting housing, T-TYPE /W series,
with 2 levers, size "104.27"

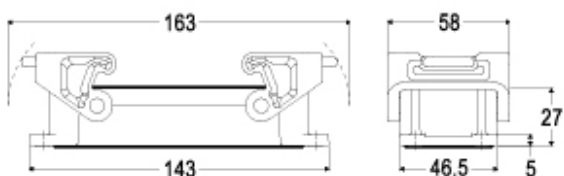
Product description		Material properties	
Product type	Bulkhead mounting housing	Main material	Polypropylene (PP)
Series	T-TYPE /W	Other materials	Lever: Polyamide (PA) Gasket: FKM
Closing type	With 2 levers	Colour	RAL 7012 grey, RAL 7001 grey
Size	Size 104.27	RoHs conformity	Compliant
Cable entry	Without cable entry	China RoHs - EFUP	E
Technical data		REACH SVHC substances	No
IP degree of protection	IP66 / IP69	Approvals / Standards	
Further technical details		UL	ECBT2
Weight	97,00 g	cUL	ECBT8
Operating temperature range (min, max)	-40°C ... +90°C	General ordering information	
		EAN13 code	8015747211383
		eCl@ss 8.1	27440202
		ETIM 7.0	EC000437
		Packaging Information	
		Packaging length	365,00 mm
		Packaging height	195,00 mm
		Packaging width	305,00 mm
		Packaging weight	4,27 kg
		Packaging volume	21,71 dm ³
		Packaging description	Carton box
		Packaging quantity	40 Pcs
		Packaging EAN code	8015747211543
		Sub-packaging weight	0,53 kg
		Sub-packaging description	Plastic packaging
		Sub-packaging quantity	5 Pcs
		Sub-packaging EAN barcode	8015747211550

Part number

THIW 24



Catalogue drawings



Notes

Dimensions shown in mm are not binding and may be changed without notice.
