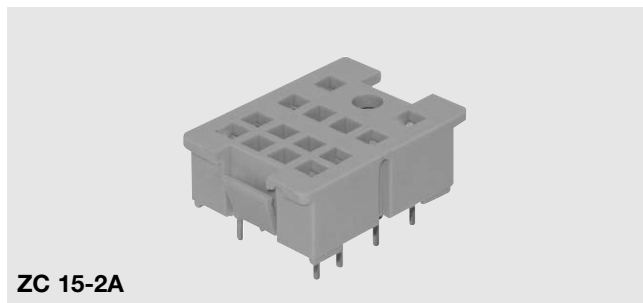
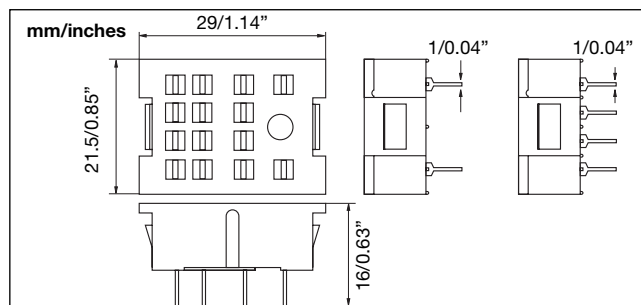


## Sockets for RMI Relays

### ZC 15/2A - ZC 15/4A



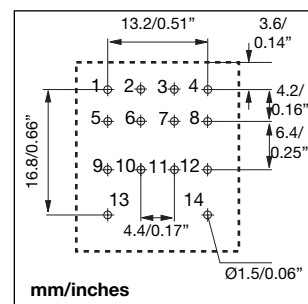
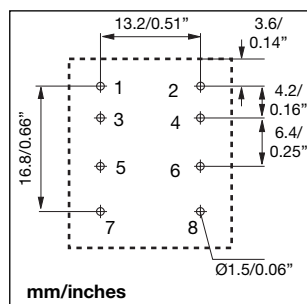
ZC 15-2A



### General data

Rated voltage	300V
Rated current	ZC 15-2A 12A ZC 15-4A 10A
Insulation voltage	2kV
Operating temperature	-25° to +85°C (-13° to +185°F)
Socket material	ABS Grey
Socket colour	RAL 7035 / Pantone 1C
Contact material	Copper tin plated CuSn <sub>6</sub>

Ordering part number	ZC152A
Ordering part number	ZC154A
Box content:	10 sockets
Box size: (W 125 x D 30 x H 25) mm	Weight: 100g
(W 4.92 x D 1.18 x H 0.98) inches	Weight: 3.53oz



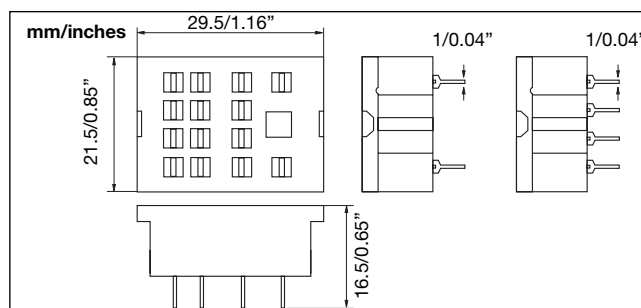
### Approvals



### ZC 15/2 - ZC 15/4



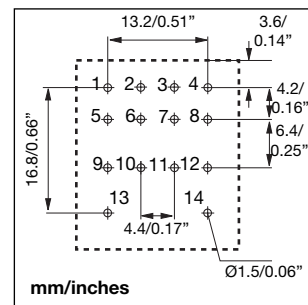
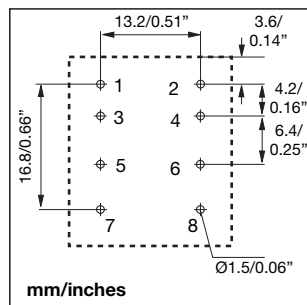
ZC 15/2



### General data

Rated Voltage	250V
Rated Current	10A
Insulation Voltage	2kV
Operating temperature	-25° to +85°C (-13° to +185°F)
Socket Material	PPEm
Socket colour	Black
Contact material	Copper tin plated CuSn

Ordering part number ZC15/2	9399028000
Ordering part number ZC15/4	9399028200
Box content:	100 sockets
Box size: (W 150 x D 110 x H 70) mm	Weight: 900g
(W 5.90 x D 4.33 x H 2.75) inches	Weight: 31.75oz



### Approvals

