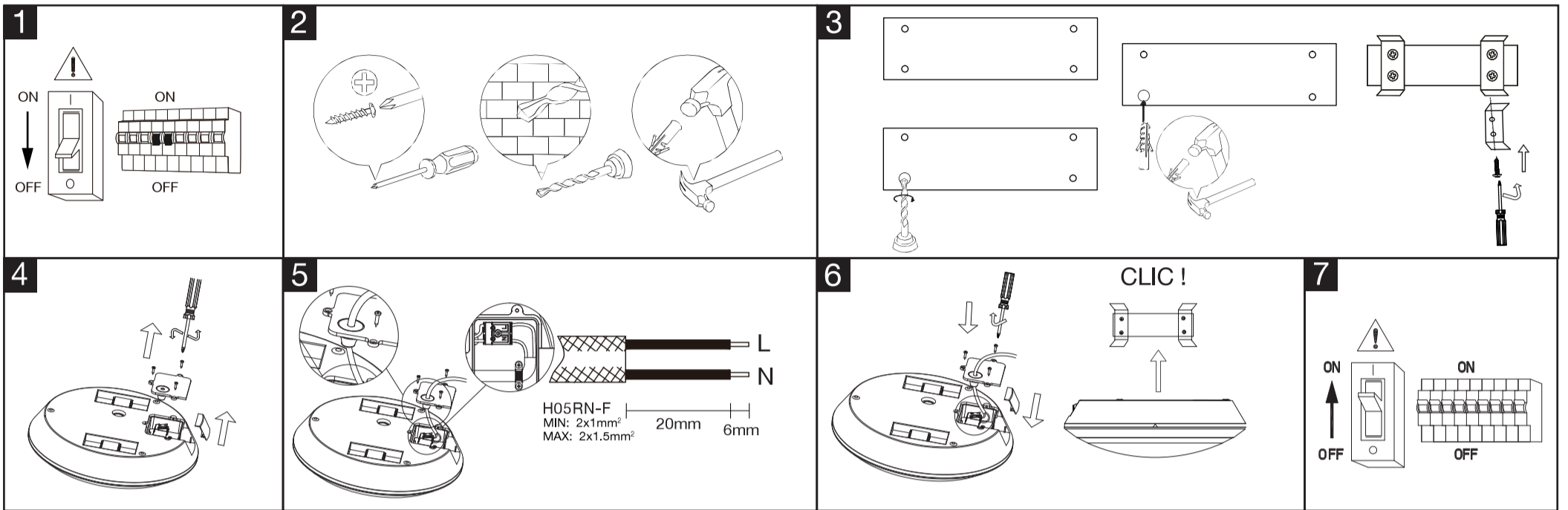




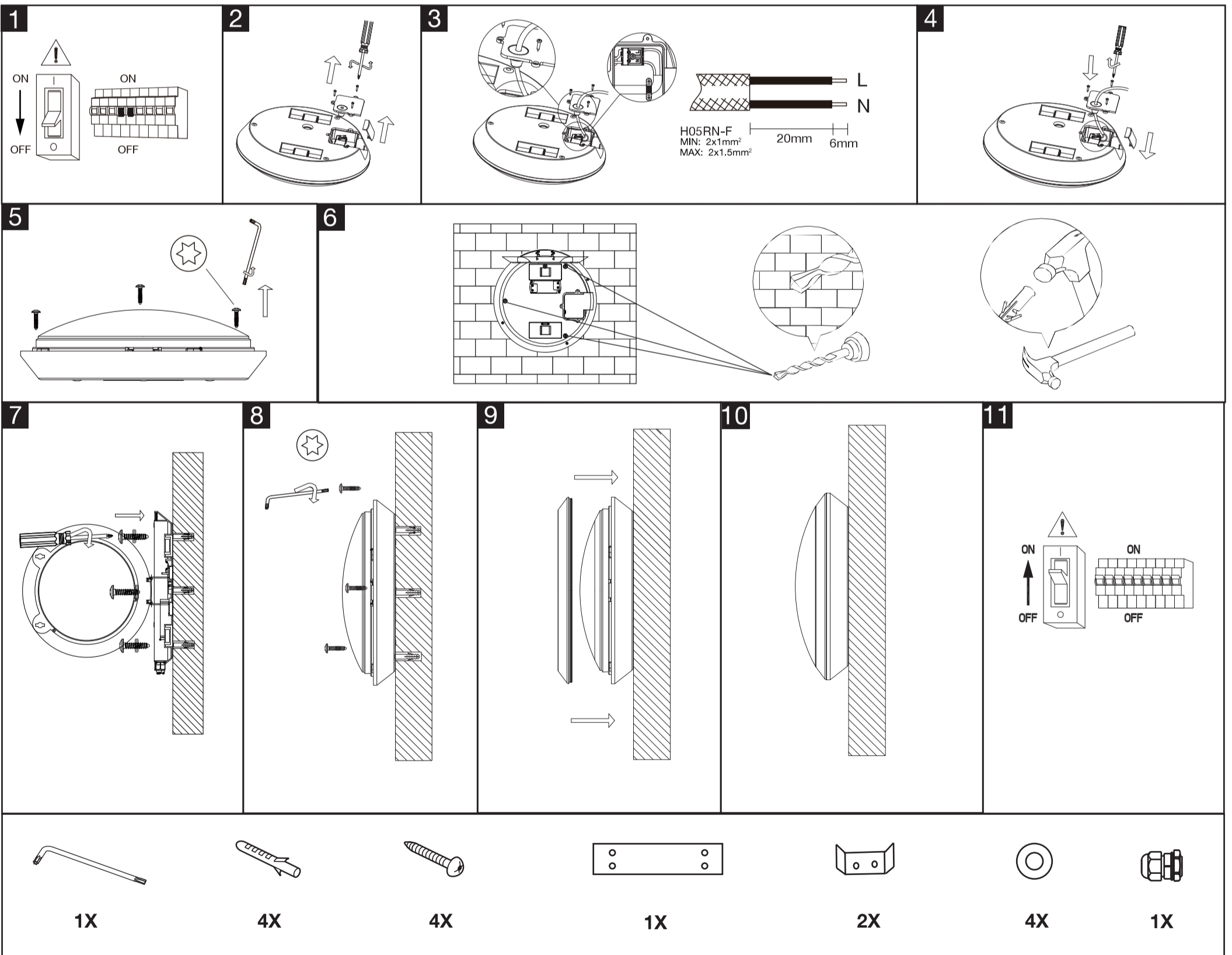
INSTRUCTION MANUAL/ MANUEL D'INSTRUCTIONS/ BRUKSANVISNING/ BRUKSANVISNINGEN/ KÄYTTÖOPAS/ MANUAL DE INSTRUÇÕES

BULKHEAD/ HUBLOT/ SKILJEVÄGG/Skott/ BULKHEAD-VALAISIN/ BULKHEAD

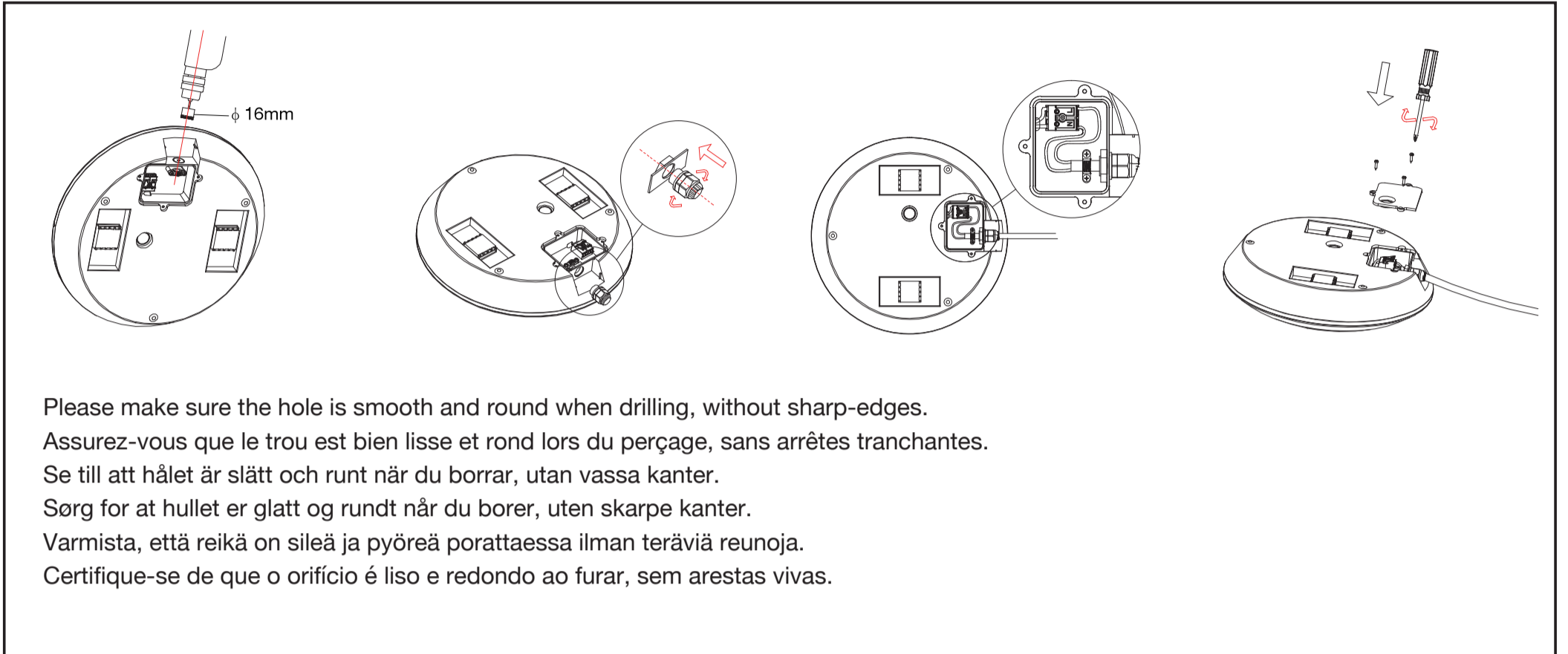
Installation method 1/ Méthode d'installation 1/ Installationsmetod 1/ Installasjonsmetode 1/ Asennustapa 1/ Método de instalação 1



Installation method 2/ Méthode d'installation 2/ Installationsmetod 2/ Installasjonsmetode 2/ Asennustapa 2/ Método de instalação 2



Side wire connection/ Passage de câble de connexion latéral/ Sidokabelanslutning/ Tilkobling til sideledning/ Sivujohdon liitäntä/ Conexão de fio lateral



IP66



IK10



220-240V~ 50/60Hz

GB WARNING:

1. Ensure that the main electrical supply is switched off before installing the luminaire.
2. This product has LED build-in, the light source of this luminaire is not replaceable.
3. This marking indicates that this product should not be disposed with other household wastes throughout the EU. To prevent possible harm to the environment or human health from uncontrolled waste disposal, recycle it responsibly to promote the sustainable reuse of material resources. To return your used device, please use the return and collection systems or contact the retailer where the product was purchased. They can take this product for environmental safe recycling.
4. This product contains a light source of energy efficiency class D.

SE VARNING:

1. Se till att elnätet är avstängt innan du installerar armaturen.
2. Denna produkt har inbyggd lysdiod, och ljuskällan till denna armatur är inte utbytbar.
3. Denna märkning indikerar att denna produkt inte ska kasseras med annat hushållsavfall i hela EU. För att förebygga eventuella skador på miljön eller människors hälsa genom okontrollerad avfallshandtering, är återvinning ett ansvarsfullt sätt att främja en hållbar återanvändning av materialresurser. För att returnera din begagnade enhet, ska retur- och insamlingssystemen användas eller kontakta återförsäljaren där produkten köptes. De kan hantera denna produkten för miljösäker återvinning.
4. Denna produkt innehåller en ljuskälla för energieffektivitetsklass D.

FI VAROITUS:

1. Varmista, että päävirta on kytketty pois päältä ennen valaisimen asennusta.
2. Tuotteessa on sisäänrakennettu LED, eikä valaisimen valonlähdettä voi vaihtaa.
3. Merkintä tarkoittaa, että tuotetta ei saa hävittää kotitalousjätteen mukana EU:n alueella. Jotta vältytään sääntelemättömän jätteiden hävityksen ympäristölle ja ihmisten terveydelle koituvasta mahdollisesta haitasta, kierrätä tuote vastuullisesti edistääksesi materiaalien kestävää uusiokäyttöä. Palauta käytetty laite käytettävissäsi olevien palautus- ja keräysjärjestelmien kautta tai ota yhteys jälleenmyyjään, jolta ostit tuotteen. He voivat toimittaa tuotteen ympäristön kannalta kestävään kierrätykseen.
4. Tämä tuote sisältää energiatehokkuusluokan valonlähteen D.

FR AVERTISSEMENT:

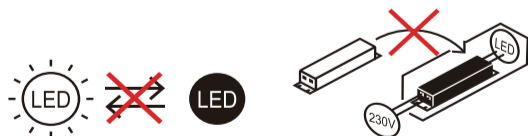
1. Assurez-vous que l'alimentation électrique principale est coupée avant d'installer le luminaire.
2. Ce produit est équipé de LED, la source lumineuse de ce luminaire n'est pas remplaçable.
3. Ce marquage indique que ce produit ne doit pas être jeté avec d'autres déchets ménagers dans toute l'UE. Afin de prévenir tout dommage éventuel à l'environnement ou à la santé humaine dû à l'élimination incontrôlée des déchets, il convient de le recycler de manière responsable afin de promouvoir la réutilisation durable des ressources matérielles. Pour retourner votre appareil usagé, veuillez utiliser les systèmes de retour et de collecte ou contacter le détaillant où le produit a été acheté. Celui-ci peut prendre ce produit pour un recyclage respectueux de l'environnement.
4. Ce produit contient une source lumineuse de classe d'efficacité énergétique D.

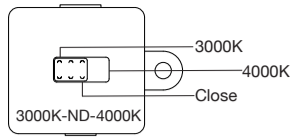
NO Advarsel:

1. Kontroller at hovedstrømnettet er slått av før armaturen monteres.
2. Dette produktet har LED-innbygging, lyskilden til denne armaturen kan ikke skiftes ut.
3. Denne merkingen indikerer at dette produktet ikke skal kastes sammen med annet husholdningsavfall i hele EU. For å forhindre mulig skade på miljøet eller menneskers helse fra ukontrollert avfallshåndtering, resirkuler det ansvarlig for å fremme bærekraftig gjenbruk av materielle ressurser. For å returnere den brukte enheten, bruk retur- og innsamlingssystemene eller kontakt forhandleren der produktet ble kjøpt. De kan ta dette produktet for miljøvennlig resirkulering.
4. Dette produktet inneholder en lyskilde for energieffektivitetsklasse D.

PT ATENÇÃO:

1. Assegure-se de que a fonte elétrica principal esteja desligada antes de instalar a luminária.
2. Este produto tem LEDs montados nele, a fonte de luz desta luminária não é substituível.
3. Esta marcação indica que este produto não deve ser descartado com outros dejetos em nenhuma parte da UE. Para evitar possíveis danos ao ambiente ou à saúde humana pelo descarte descontrolado, recicle responsavelmente para promover um reuso sustentável de recursos materiais. Para devolver seu aparelho novo, utilize os sistemas de retorno e coleta ou faça contacto com o distribuidor onde o produto foi adquirido. Eles podem recolher este produto para a reciclagem ambientalmente segura.
4. Este produto contém uma fonte de luz da classe de eficiência energética D.





DIP Switch Setting For Sensor Version

Detection Area

| | | | |
|-----|----|----|------|
| | 1 | 2 | |
| I | ON | ON | 100% |
| II | ON | - | 75% |
| III | - | ON | 50% |
| IV | - | - | 25% |

Hold Time

| | | | | |
|------|----|----|----|-------|
| | 3 | 4 | 5 | |
| I | ON | ON | ON | 5S |
| II | ON | ON | - | 30S |
| III | ON | - | ON | 1min |
| V | ON | ON | - | 3min |
| IV | - | ON | ON | 5min |
| IIV | - | ON | - | 10min |
| IIIV | - | - | ON | 20min |
| IX | - | - | - | 30min |

Daylight Threshold

| | | | | |
|-----|----|----|----|---------|
| | 6 | 7 | 8 | |
| I | ON | ON | ON | 2Lux |
| II | ON | ON | - | 10Lux |
| III | - | ON | - | 25Lux |
| V | ON | - | - | 50Lux |
| IV | - | - | - | Disable |

* Disable means the daylight sensor does not work. The sensor will turn on light once motion, is detected regard less of ambient lightlevel.

Factory Setting

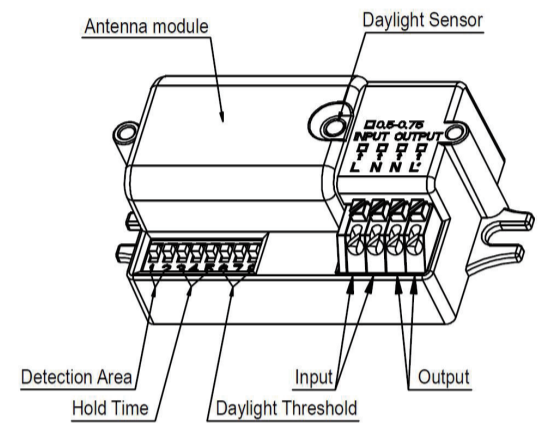
Detection area: 100%, Hold Time :5S, Daylight Sensor: Disable

*Detecting range: Maximum radius 6m (at mounting height 3m, detection area 100% setting)

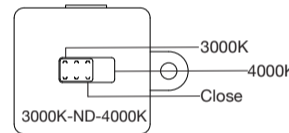
Initialization

After power on, the sensor automatically turns on light at 100% brightness. During the initialization, the sensor is not able to detect movement.

Structure



| Model | SGSO Sku | Power | Lumen | CRI | CCT | Lifetime | Size | Sensor |
|---------|------------|-------|--------------|-----|------------|----------|----------|--------|
| LUKIN03 | 0028920138 | 23W | 2400lm(360°) | 80 | 3000/4000K | 50,000h | 308x98mm | No |
| LUKIN04 | 0028920139 | 23W | 2400lm(360°) | 80 | 3000/4000K | 50,000h | 308x98mm | Yes |



Réglage du commutateur à bouton pour réglage du capteur

Zone de détection

| | | | |
|-----|----|----|------|
| | 1 | 2 | |
| I | ON | ON | 100% |
| II | ON | - | 75% |
| III | - | ON | 50% |
| IV | - | - | 25% |

Temporisation

| | | | | |
|------|----|----|----|-------|
| | 3 | 4 | 5 | |
| I | ON | ON | ON | 5S |
| II | ON | ON | - | 30S |
| III | ON | - | ON | 1min |
| V | ON | ON | - | 3min |
| IV | - | ON | ON | 5min |
| IIV | - | ON | - | 10min |
| IIIV | - | - | ON | 20min |
| IX | - | - | - | 30min |

Seuil de lumière du jour

| | | | | |
|-----|----|----|----|---------|
| | 6 | 7 | 8 | |
| I | ON | ON | ON | 2Lux |
| II | ON | ON | - | 10Lux |
| III | - | ON | - | 25Lux |
| V | ON | - | - | 50Lux |
| IV | - | - | - | Disable |

* Désactiver signifie que le capteur de lumière du jour ne fonctionne pas. Le capteur allumera la lumière une fois le mouvement détecté, en tenant compte du niveau de lumière ambiante.

Réglage en usine

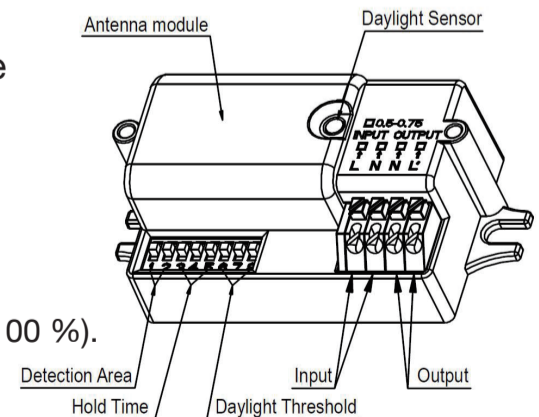
Zone de détection : 100%, Temporisation : 5S, capteur de lumière du jour : Désactiver

*Plage de détection : rayon maximal de 6 m (à une hauteur de montage de 3 m, zone de détection à 100 %).

Initialisation

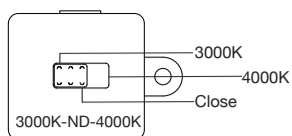
Après la mise sous tension, le capteur allume automatiquement la lumière à 100 % de sa luminosité. Pendant l'initialisation, le capteur ne peut pas détecter de mouvement.

Structure



| Modèle | SGSO Sku | Puissance | Lumen | IRC | Couleur de température | Durée de vie | Taille | Capteur |
|---------|------------|-----------|--------------|-----|------------------------|--------------|----------|---------|
| LUKIN03 | 0028920138 | 23W | 2400lm(360°) | 80 | 3000/4000K | 50,000h | 308x98mm | No |
| LUKIN04 | 0028920139 | 23W | 2400lm(360°) | 80 | 3000/4000K | 50,000h | 308x98mm | Yes |

SE Omkopplingsbar CCT



Inställning av DIP-omkopplare för sensorversion

Detektionsområde

| | 1 | 2 | |
|-----|----|----|------|
| I | ON | ON | 100% |
| II | ON | - | 75% |
| III | - | ON | 50% |
| IV | - | - | 25% |

Hålltid

| | 3 | 4 | 5 | |
|------|----|----|----|-------|
| I | ON | ON | ON | 5S |
| II | ON | ON | - | 30S |
| III | ON | - | ON | 1min |
| V | ON | ON | - | 3min |
| IV | - | ON | ON | 5min |
| IIV | - | ON | - | 10min |
| IIIV | - | - | ON | 20min |
| IX | - | - | - | 30min |

Dagsljusgräns

| | 6 | 7 | 8 | |
|-----|----|----|----|---------|
| I | ON | ON | ON | 2Lux |
| II | ON | ON | - | 10Lux |
| III | - | ON | - | 25Lux |
| V | ON | - | - | 50Lux |
| IV | - | - | - | Disable |

* Inaktivera innebär att dagsljussensorn inte är igång. Sensorn slår på ljuset när rörelse detekteras med hänsyn till mindre omgivande ljus.

Fabriksinställning

Detektionsområde: 100%, Hålltid: 5S, Dagsljus-sensor: Inaktivera

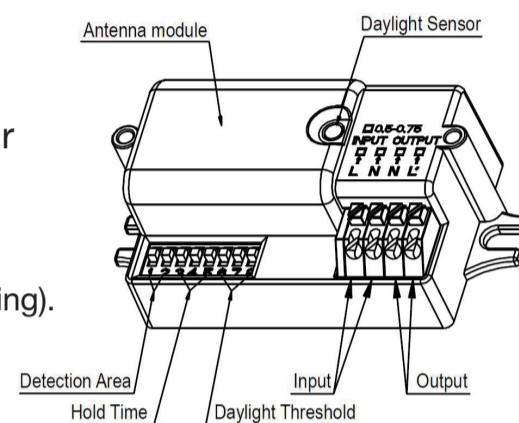
*Detekteringsområde: Maximal radie 6m (vid monteringshöjd 3m, detektionsområde 100 % inställning).

Initialisering

Efter påslagning tänds sensorn automatiskt belysning till 100% ljusstyrka.

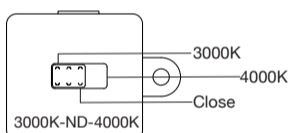
Under initialiseringen kan sensorn inte detektera rörelse.

Struktur



| Modell | SGSO Sku | Effekt | Lumen | CRI | CCT | Livstid | Storlek | Sensor |
|---------|------------|--------|--------------|-----|------------|---------|----------|--------|
| LUKIN03 | 0028920138 | 23W | 2400lm(360°) | 80 | 3000/4000K | 50,000h | 308x98mm | No |
| LUKIN04 | 0028920139 | 23W | 2400lm(360°) | 80 | 3000/4000K | 50,000h | 308x98mm | Yes |

NO Utskiftbar CCT



DIP Switch Innstilling for sensorversjon

Deteksjonsområde

| | 1 | 2 | |
|-----|----|----|------|
| I | ON | ON | 100% |
| II | ON | - | 75% |
| III | - | ON | 50% |
| IV | - | - | 25% |

Hold tid

| | 3 | 4 | 5 | |
|------|----|----|----|-------|
| I | ON | ON | ON | 5S |
| II | ON | ON | - | 30S |
| III | ON | - | ON | 1min |
| V | ON | ON | - | 3min |
| IV | - | ON | ON | 5min |
| IIV | - | ON | - | 10min |
| IIIV | - | - | ON | 20min |
| IX | - | - | - | 30min |

Dagslys terskel

| | 6 | 7 | 8 | |
|-----|----|----|----|---------|
| I | ON | ON | ON | 2Lux |
| II | ON | ON | - | 10Lux |
| III | - | ON | - | 25Lux |
| V | ON | - | - | 50Lux |
| IV | - | - | - | Disable |

* Deaktiver betyr at dagslyssensoren ikke fungerer. Sensoren vil slå på lyset når bevegelse, oppdages ansett som mindre av omgivelseslysnivået.

Fabrikkinnstilling

Deteksjonsområde: 100%, Hold tid: 5S, dagslyssensor: Deaktiver

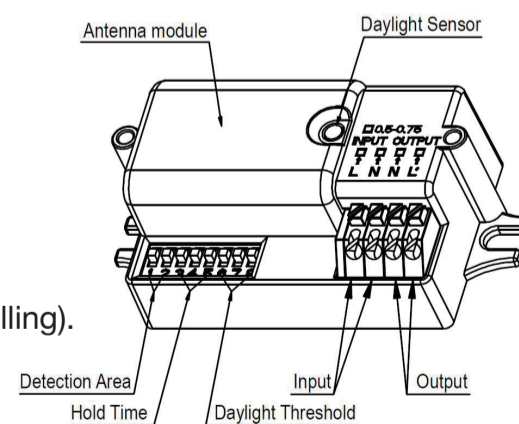
*Deteksjonsområde: Maksimal radius 6m (ved monteringshøyde 3m, deteksjonsområde 100 % innstilling).

Initialisering

Etter at sensoren er på, slås den automatisk på lys med 100 % lysstyrke.

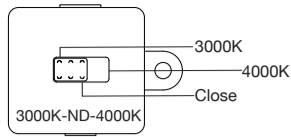
Under initialiseringen kan sensoren ikke oppdage bevegelse.

Struktur



| Modell | SGSO Sku | Makt | Lumen | CRI | CCT | Levetid | Størrelse | Sensor |
|---------|------------|------|--------------|-----|------------|---------|-----------|--------|
| LUKIN03 | 0028920138 | 23W | 2400lm(360°) | 80 | 3000/4000K | 50,000h | 308x98mm | No |
| LUKIN04 | 0028920139 | 23W | 2400lm(360°) | 80 | 3000/4000K | 50,000h | 308x98mm | Yes |

FI Vaihdeettava värilämpötila



Dip-kytkimen asetukset anturiversiolle

Havaitsemisalue

| | 1 | 2 | |
|-----|----|----|------|
| I | ON | ON | 100% |
| II | ON | - | 75% |
| III | - | ON | 50% |
| IV | - | - | 25% |

Pitoaika

| | 3 | 4 | 5 | |
|------|----|----|----|-------|
| I | ON | ON | ON | 5S |
| II | ON | ON | - | 30S |
| III | ON | - | ON | 1min |
| V | ON | ON | - | 3min |
| IV | - | ON | ON | 5min |
| IIV | - | ON | - | 10min |
| IIIV | - | - | ON | 20min |
| IX | - | - | - | 30min |

Päivänvalon kynnyksarvo

| | 6 | 7 | 8 | |
|-----|----|----|----|---------|
| I | ON | ON | ON | 2Lux |
| II | ON | ON | - | 10Lux |
| III | - | ON | - | 25Lux |
| V | ON | - | - | 50Lux |
| IV | - | - | - | Disable |

* Ei käytössä tarkoittaa, että päivänvaloanturi ei toimi. Anturi syyttää valon, kun se havaitsee liikettä, vallitsevasta valaistustasosta riippumatta.

Tehdasasetukset

Havaitsemisalue: 100 %, pitoaika: 5 s, päivänvaloanturi: ei käytössä

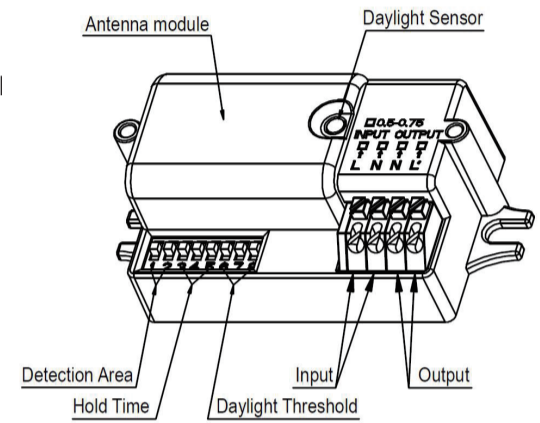
*Havaintoalue: Maksimisäde 6m (asennuskorkeudella 3m, tunnustusalue 100 % asetus).

Käynnistys

Kun laitteeseen kytketään virta, anturi syyttää valon automaattisesti

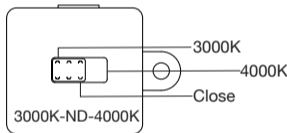
kirkkaustasolla 100 %. Käynnistuksen aikana anturi ei pysty havaitsemaan liikettä.

Rakeni



| Model | SGSO Sku | Power | Lumen | CRI | CCT | Kestoikä | Size | Anturi |
|---------|------------|-------|--------------|-----|------------|----------|----------|--------|
| LUKIN03 | 0028920138 | 23W | 2400lm(360°) | 80 | 3000/4000K | 50,000h | 308x98mm | No |
| LUKIN04 | 0028920139 | 23W | 2400lm(360°) | 80 | 3000/4000K | 50,000h | 308x98mm | Yes |

PT CCT alternante



Ajuste de interruptor DIP para versão sensor

Sensor de luz diurna

| | 1 | 2 | |
|-----|----|----|------|
| I | ON | ON | 100% |
| II | ON | - | 75% |
| III | - | ON | 50% |
| IV | - | - | 25% |

Tempo de espera

| | 3 | 4 | 5 | |
|------|----|----|----|-------|
| I | ON | ON | ON | 5S |
| II | ON | ON | - | 30S |
| III | ON | - | ON | 1min |
| V | ON | ON | - | 3min |
| IV | - | ON | ON | 5min |
| IIV | - | ON | - | 10min |
| IIIV | - | - | ON | 20min |
| IX | - | - | - | 30min |

Limiar de luz do dia

| | 6 | 7 | 8 | |
|-----|----|----|----|---------|
| I | ON | ON | ON | 2Lux |
| II | ON | ON | - | 10Lux |
| III | - | ON | - | 25Lux |
| V | ON | - | - | 50Lux |
| IV | - | - | - | Disable |

* Desarmado significa que o sensor de luz diurna não funciona. O sensor ligará a luz assim que algum movimento é detectado, independente do nível de luz do ambiente.

Ajuste de fábrica

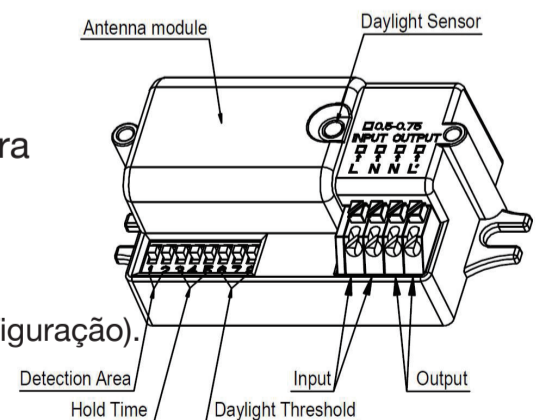
Área de detecção: 100%, tempo de espera: 5s, Sensor de luz diurna: desarmado.

*Alcance de detecção: Raio máximo 6m (na altura de montagem 3m, área de detecção 100% de configuração).

Inicialização

Depois de ligar, o sensor automaticamente liga a luz a 100% de brilho. Durante a inicialização, o sensor não é capaz de detectar movimento.

Estrutura



| Model | SGSO Sku | Power | Lumen | CRI | CCT | Vida útil | Size | Sensor |
|---------|------------|-------|--------------|-----|------------|-----------|----------|--------|
| LUKIN03 | 0028920138 | 23W | 2400lm(360°) | 80 | 3000/4000K | 50,000h | 308x98mm | No |
| LUKIN04 | 0028920139 | 23W | 2400lm(360°) | 80 | 3000/4000K | 50,000h | 308x98mm | Yes |