



SLT060-0B010J700

SLT

SENSOR VISUALIZATION

**SICK**  
Sensor Intelligence.



### Ordering information

Type	Part no.
SLT060-0B010J700	6075938

Other models and accessories → [www.sick.com/SLT](http://www.sick.com/SLT)



### Detailed technical data

#### Features

<b>Product category</b>	LED signal lamp
<b>Application</b>	Indoor area
<b>Features</b>	<ul style="list-style-type: none"> <li>Number of colors 21, pre-defined</li> <li>Number of LED segments 20</li> <li>Types of light Continuous light, blinking light, flashing light, pulse light</li> <li>Light frequency Slow (0.5 Hz), medium (1.5 Hz), fast (2.0 Hz)</li> <li>Dimmer function Yes</li> <li>Brightness levels 0% ... 100%, can be adjusted in 10% increments</li> </ul>
<b>Operating modes</b>	<ul style="list-style-type: none"> <li>Signal lamp mode ✓</li> <li>Filling level mode ✓</li> <li>Animation mode ✓</li> </ul>
<b>Further functions</b>	IO-Link signal lamp Parameterization via IO-Link Simple configuration directly via the SOPAS ET user interface, the engineering tool from SICK

#### Mechanics/electronics

<b>Connections</b>	IO-Link 1 x M12, 5-pin male connector, A-coded
<b>Nominal voltage</b>	24 V DC
<b>Supply voltage</b>	18 V DC ... 30 V DC
<b>Current consumption</b>	≤ 300 mA <sup>1)</sup>

<sup>1)</sup> Including accessories for beeper SLB060-0B010K700.

<sup>2)</sup> For 0.1 ms.

<b>Switch-on current</b>	30 A <sup>2)</sup>
<b>Switch-on time</b>	0.1 ms
<b>Housing material</b>	Polycarbonat (PC)
<b>Housing color</b>	Black
<b>Weight</b>	590 g
<b>Dimensions (W x H x D)</b>	60 mm x 306 mm x 60 mm
<b>Mounting direction</b>	Vertical
<b>Protection class</b>	III
<b>Enclosure rating</b>	IP65
<b>UL File No.</b>	E198242

<sup>1)</sup> Including accessories for beeper SLB060-0B010K700.

<sup>2)</sup> For 0.1 ms.

### Communication interface

<b>Communication interface</b>	IO-Link V1.12, Port Class A
<b>Communication Interface detail</b>	COM2 (38,4 kBaud)
<b>Cycle time</b>	< 8 ms
<b>Process data length</b>	2 Byte Out
<b>Operator interfaces</b>	SOPAS ET, the engineering tool for configuration (connection to an IO-Link master required)
<b>Additional interfaces</b>	Interface for accessories for beeper SLB060-0B010K700
<b>Optical indicators</b>	1 LED (green, for IO-Link communication)

### Ambient data

<b>Ambient operating temperature</b>	-25 °C ... +50 °C
<b>Ambient temperature, storage</b>	-30 °C ... +60 °C
<b>Permissible relative humidity</b>	90 % (Non-condensing)
<b>Electromagnetic compatibility (EMC)</b>	EN 61000-6-4 / EN 61000-6-2

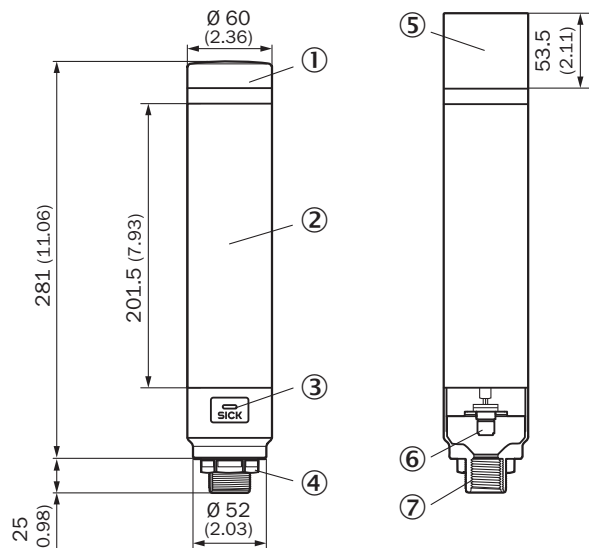
### Classifications

<b>eCl@ss 5.0</b>	27371220
<b>eCl@ss 5.1.4</b>	27371220
<b>eCl@ss 6.0</b>	27371220
<b>eCl@ss 6.2</b>	27371220
<b>eCl@ss 7.0</b>	27371220
<b>eCl@ss 8.0</b>	27371220
<b>eCl@ss 8.1</b>	27371220
<b>eCl@ss 9.0</b>	27371220
<b>eCl@ss 10.0</b>	27371220
<b>eCl@ss 11.0</b>	27371220
<b>eCl@ss 12.0</b>	27371220
<b>ETIM 5.0</b>	EC000232
<b>ETIM 6.0</b>	EC000232
<b>ETIM 7.0</b>	EC000232
<b>ETIM 8.0</b>	EC000232

UNSPSC 16.0901

39121107



**Dimensional drawing** (Dimensions in mm (inch))







- ① Cover
- ② LED segment display
- ③ IO-Link status LED
- ④ Fastening nuts (1 x); width across 46, polycarbonate (PC)
- ⑤ SLB060-0B010K700 buzzer (optional accessories)
- ⑥ IO-Link connection, male connector, M12, 5-pin
- ⑦ Thread ½"

**Recommended accessories**

Other models and accessories → [www.sick.com/SLT](http://www.sick.com/SLT)

	Brief description	Type	Part no.
<b>Signal and status indicators</b>			
	This product is a buzzer unit exclusively for model SLT060-0B010J700.	SLB060-0B010K700	6076072
<b>Plug connectors and cables</b>			
	Head A: female connector, M12, 4-pin, straight, A-coded Head B: male connector, M12, 4-pin, straight, A-coded Cable: Sensor/actuator cable, PUR, halogen-free, unshielded, 1 m	YF2A14-010UB3M2A14	2095997
	Head A: female connector, M12, 4-pin, straight, A-coded Head B: male connector, M12, 4-pin, straight, A-coded Cable: Sensor/actuator cable, PUR, halogen-free, unshielded, 2 m	YF2A14-020UB3M2A14	2096000
	Head A: female connector, M12, 4-pin, straight, A-coded Head B: male connector, M12, 4-pin, straight, A-coded Cable: Sensor/actuator cable, PUR, halogen-free, unshielded, 5 m	YF2A14-050UB3M2A14	2096001

	Brief description	Type	Part no.
	Head A: female connector, M12, 4-pin, straight, A-coded Head B: male connector, M12, 4-pin, straight, A-coded Cable: Sensor/actuator cable, PUR, halogen-free, unshielded, 10 m	YF2A14-100UB3M2A14	2096002
Others			
	IO-Link V1.1 Class A port, USB2.0 port, optional external power supply 24V / 1A		On request
Sensor Integration Gateway			
	<ul style="list-style-type: none"> <li>• <b>Further functions:</b> Web server integrated, USB connection for easy configuration of the SIG200 Sensor Integration Gateway with SOPAS ET, the engineering tool from SICK, logic editor is available for easy configuration of logic functions</li> <li>• <b>Connection CONFIG:</b> 1 x M8, 4-pin female connector, USB 2.0 (USB-A)</li> <li>• <b>Logic editor:</b> yes</li> <li>• <b>Communication interface:</b> IO-Link, USB, Ethernet, PROFINET, REST API</li> <li>• <b>Product category:</b> IO-Link Master</li> </ul>	SIG200-0A0412200	1089794
	<ul style="list-style-type: none"> <li>• <b>Description:</b> The SIG200 Sensor Integration Gateway is an IO-Link master with 4 configurable ports through which the IO-Link devices or standard inputs or standard outputs can be connected to a PLC or cloud application using the REST API.</li> <li>• <b>Further functions:</b> Web server integrated, USB connection for easy configuration of the SIG200 Sensor Integration Gateway with SOPAS ET, the engineering tool from SICK, logic editor is available for easy configuration of logic functions</li> <li>• <b>Connection CONFIG:</b> 1 x M8, 4-pin female connector, USB 2.0 (USB-A)</li> <li>• <b>Logic editor:</b> yes</li> <li>• <b>Communication interface:</b> IO-Link, USB, Ethernet, EtherNet/IP™, REST API</li> <li>• <b>Product category:</b> IO-Link Master</li> </ul>	SIG200-0A0512200	1089796
	<ul style="list-style-type: none"> <li>• <b>Further functions:</b> Web server integrated, USB connection for easy configuration of the SIG200 Sensor Integration Gateway with SOPAS ET, the engineering tool from SICK, logic editor is available for easy configuration of logic functions</li> <li>• <b>Connection CONFIG:</b> 1 x M8, 4-pin female connector, USB 2.0 (USB-A)</li> <li>• <b>Logic editor:</b> yes</li> <li>• <b>Communication interface:</b> IO-Link, USB, Ethernet, REST API</li> <li>• <b>Product category:</b> IO-Link Master</li> </ul>	SIG200-0A0G12200	1102605

## SICK AT A GLANCE

SICK is one of the leading manufacturers of intelligent sensors and sensor solutions for industrial applications. A unique range of products and services creates the perfect basis for controlling processes securely and efficiently, protecting individuals from accidents and preventing damage to the environment.

We have extensive experience in a wide range of industries and understand their processes and requirements. With intelligent sensors, we can deliver exactly what our customers need. In application centers in Europe, Asia and North America, system solutions are tested and optimized in accordance with customer specifications. All this makes us a reliable supplier and development partner.

Comprehensive services complete our offering: SICK LifeTime Services provide support throughout the machine life cycle and ensure safety and productivity.

For us, that is “Sensor Intelligence.”

## WORLDWIDE PRESENCE:

Contacts and other locations –[www.sick.com](http://www.sick.com)