

Part number
CGI 24



Bulkhead mounting housing, IP68 series, for 2 screws, size "104.27"

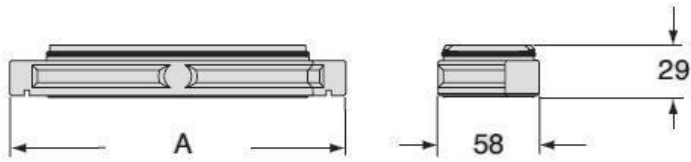
Product description		Material properties	
Product type	Bulkhead mounting housing	Main material	Aluminium die-cast
Series	IP68	Other materials	Gasket: NBR
Closing type	With 2 screws	Colour	RAL 9005 black
Size	Size 104.27	RoHs conformity	Compliant
Cable entry	Without cable entry	China RoHs - EFUP	E
Technical data		REACH SVHC substances	No
IP degree of protection	IP66 / IP68 / IP69	Approvals / Standards	
Further technical details		Certifications	DNV, BV
Weight	184,00 g	UL	ECBT2
Operating temperature range (min, max)	-40°C...+125°C	cUL	ECBT8
		General ordering information	
		EAN13 code	8015747117647
		eCl@ss 8.1	27440202
		ETIM 7.0	EC000437
		Packaging Information	
		Packaging length	245,00 mm
		Packaging height	165,00 mm
		Packaging width	215,00 mm
		Packaging weight	2,20 kg
		Packaging volume	8,69 dm ³
		Packaging description	Carton box
		Packaging quantity	10 Pcs
		Packaging EAN code	8015747299961
		Sub-packaging length	195,00 mm
		Sub-packaging height	40,00 mm
		Sub-packaging width	60,00 mm
		Sub-packaging weight	0,22 kg
		Sub-packaging volume	0,47 dm ³
		Sub-packaging description	Carton tray
		Sub-packaging quantity	1 Pcs
		Sub-packaging EAN barcode	8015747117654

Part number
CGI 24



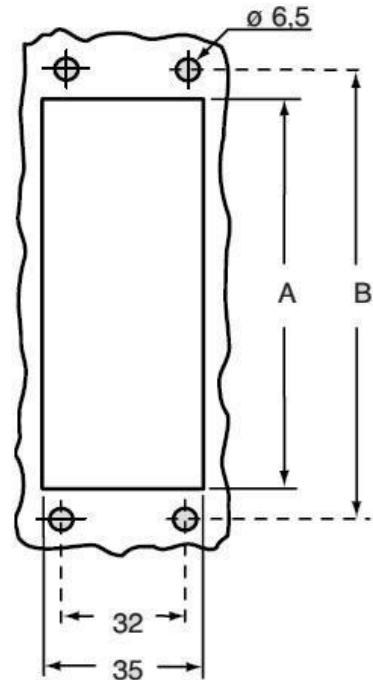
Catalogue drawings

CGI



	A
CGI 06	133
CGI 10	146
CGI 16	166
CGI 24	193

Catalogue drawings



	A	B
CGI 06 B	52	70
CGI 10 B	65	83
CGI 16 B	86	103
CGI 24 B	112	130

Notes

Dimensions shown in mm are not binding and may be changed without notice.