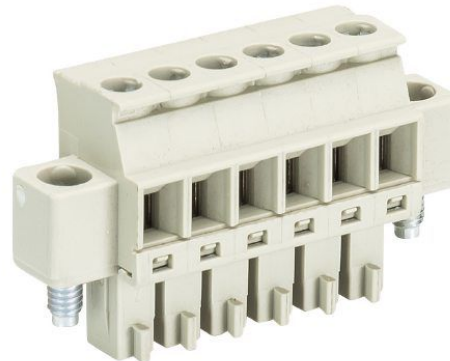


Fiche produit

Article n° 25.624.3253.0

Connecteur PCB 8813 B / 2 VL OB



| | |
|-------------------|---------------|
| Article n° | 25.624.3253.0 |
| EAN | 4015573378728 |
| Unité de commande | 100 Piece(s) |

certificats/approbations



Données techniques

général

| | |
|-----------------------------------|-----------------|
| Espacement modulaire | 3,81 mm |
| Type de connexion | Connexion à vis |
| processus de soudure | Aucun |
| Répartiteur compact | boîte |
| Nombre de pôles | 2 |
| Marquage | Aucun |
| Fixation | Aucun |
| Sens de branchement du connecteur | 90° |

Données techniques

| | |
|-------------------------------|---------------------|
| Section transversale nominale | 1,5 mm ² |
| Courant nominal | 8 A |
| Catégorie de surtension I | 690 V |
| Catégorie de surtension II | 250 V |
| Catégorie de surtension III | 125 V |
| Tension nominale d'impulsion | 2,5 kV |
| longueur de fil | 6,5 mm |

données de connection

| | |
|-----------------------------|----------------------|
| Section minimum fil rigide | 0,14 mm ² |
| Section maximum fil rigide | 1,5 mm ² |
| Section minimum multi-brins | 0,14 mm ² |
| Section maximum multi-brins | 1,5 mm ² |
| longueur de fil | 6,5 mm |

Données techniques UL/CSA

| | |
|------------------------------|-----------|
| Section traversante norme UL | 30-16 AWG |
| Tension UL | 300 V |
| Câblage actuel | 8 A |

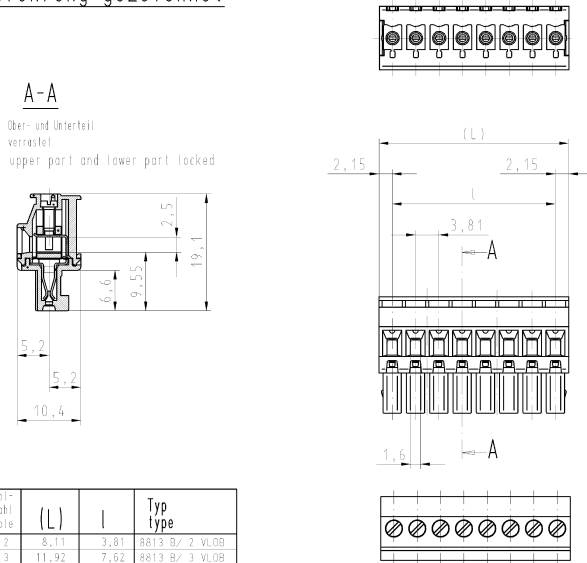
| | |
|-------------------------------|-----------|
| Câblage d'usine actuelle | 8 A |
| Section traversante norme CSA | 22-14 AWG |
| Tension CSA | 300 V |
| CSA actuel | 5 A |

Autre

| | |
|------------------------------|------------------|
| Type de matériau d'isolation | Thermo-plastique |
| Couleur | gris |
| hauteur | 19,1 mm |
| Longueur | 8,41 mm |
| profondeur | 10,4 mm |
| matière Vis de fixation | Acier |
| matière de base de contact | CuSn |
| matière surface de contact | Sn |

Dessin technique

**Ab 7-polige Ausführung ohne Bremsflächen
8-polige Ausführung gezeichnet**

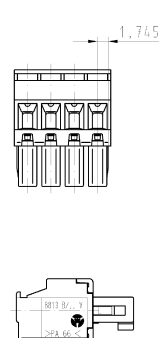


A-A
Ober- und Unterteil verriegelt
upper part and lower part locked

| Artikel-Nr. part number | Pol- zahl pole | (L) | l | Typ type |
|----------------------------|----------------------|-------|-------|----------------|
| 25.624.3253.F | 2 | 8,11 | 3,81 | 8813 Ø/ 2 VL08 |
| 25.624.3353.F | 3 | 11,92 | 7,62 | 8813 Ø/ 3 VL08 |
| 25.624.3453.F | 4 | 15,73 | 11,43 | 8813 Ø/ 4 VL08 |
| 25.624.3553.F | 5 | 19,54 | 15,24 | 8813 Ø/ 5 VL08 |
| 25.624.3653.F | 6 | 23,35 | 19,05 | 8813 Ø/ 6 VL08 |
| 25.624.3753.F | 7 | 27,16 | 22,86 | 8813 Ø/ 7 VL08 |
| 25.624.3853.F | 8 | 30,97 | 26,67 | 8813 Ø/ 8 VL08 |
| 25.624.3953.F | 9 | 34,78 | 30,48 | 8813 Ø/ 9 VL08 |
| 25.624.4053.F | 10 | 38,59 | 34,29 | 8813 Ø/10 VL08 |
| 25.624.4153.F | 11 | 42,40 | 38,10 | 8813 Ø/11 VL08 |
| 25.624.4253.F | 12 | 46,21 | 41,91 | 8813 Ø/12 VL08 |
| 25.624.4353.F | 13 | 50,02 | 45,72 | 8813 Ø/13 VL08 |
| 25.624.4453.F | 14 | 53,83 | 49,53 | 8813 Ø/14 VL08 |
| 25.624.4553.F | 15 | 57,64 | 53,34 | 8813 Ø/15 VL08 |
| 25.624.4653.F | 16 | 61,45 | 57,15 | 8813 Ø/16 VL08 |
| 25.624.4753.F | 17 | 65,26 | 60,96 | 8813 Ø/17 VL08 |
| 25.624.4853.F | 18 | 69,07 | 64,77 | 8813 Ø/18 VL08 |
| 25.624.4953.F | 19 | 72,88 | 68,58 | 8813 Ø/19 VL08 |
| 25.624.5053.F | 20 | 76,69 | 72,39 | 8813 Ø/20 VL08 |

Weitere Daten siehe Katalog
further data see catalog

**4-polige Ausführung gezeichnet
4 pole version drawn**



Bei 2-6polige Ausführung
(25.624.3253.F, 25.624.3353.F, 25.624.3453.F,
25.624.3553.F u. 25.624.3653.F)
sind am Isoliergehäuse Bremsflächen an den
Außenflächen am ersten und letzten Pol

2-6pole version
(25.624.3253.F, 25.624.3353.F, 25.624.3453.F,
25.624.3553.F u. 25.624.3653.F)
with ribs on the outer surface
of the first and last pole

| | | | |
|---|--|--|--|
| Toleranzierung nach DIN 7167/Tolerance system acc. to DIN 7167. This DIN standard declares the average principle. According to the average principle the deviations of form and position are limited by the size tolerances. | Spikes and burrs are not permitted. According to the average principle the deviations of form and position are limited by the size tolerances. | Spikes and burrs are not permitted. According to the average principle the deviations of form and position are limited by the size tolerances. | Spikes and burrs are not permitted. According to the average principle the deviations of form and position are limited by the size tolerances. |
| Farbe/colour .F .0 grau/grey .1 schwarz/black .7 grün/green | Bedruckung/Colour printing/colour schwarz/black weiß/white schwarz/black | Werkstoff/Material 2.1 Ø11/Ø12 Ø13/Ø14 Ø15/Ø16 Ø17/Ø18 Ø19/Ø20 | Zeichnung Nr./Drawing No. 25.624.3253.0 01K Typ LP_STECKKLEMME mit Stack- u. Schraubenschluss, Rastermaß/pitch 3,81 PCB CONNECTOR, rising cage clamp system |