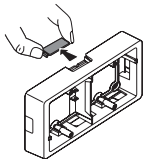
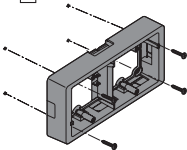


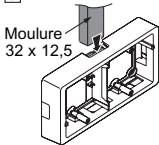
1



2

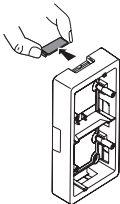


3

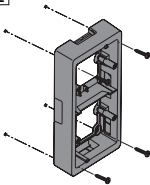


ou

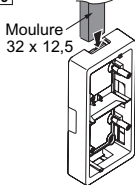
1

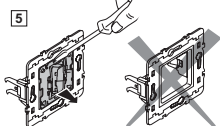
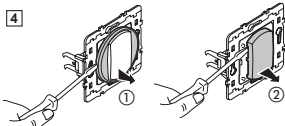


2



3

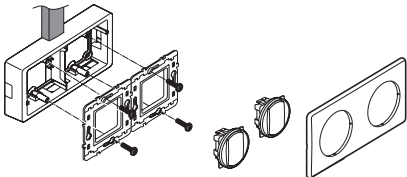




**6** Utilisation du cadre pour les fonctions interrupteur, va-et-vient et poussoir Céliane™



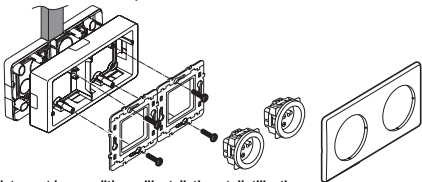
**Fixation  
à vis**



**7** Utilisation du cadre et de la réhausse pour toutes les autres fonctions Céliane™



**Fixation  
à vis**



**!** Respecter strictement les conditions d'installation et d'utilisation.