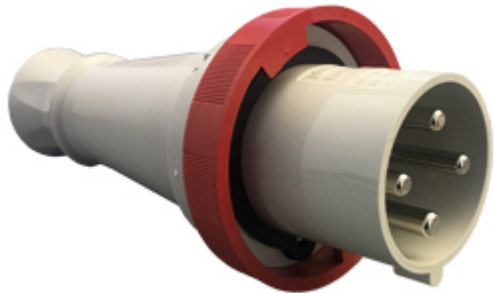



Part number

# PEW 6364 SV



Mobile plug, PLUSO series, 3 poles + PE, 6 h (red), 63 A, 380 ÷ 415 V, straight

#### Product description

<b>Product type</b>	Plug Mobile
<b>Series</b>	PEW...SV, PLUSO
<b>N. of poles</b>	3 poles + 
<b>Clock position</b>	6
<b>Specification</b>	Straight

#### Technical data

<b>Current</b>	63 A
<b>Voltage</b>	380 ÷ 415 V
<b>IP degree of protection</b>	IP67

#### Further technical details

<b>Weight</b>	758,00 g
<b>Operating temperature range (min, max)</b>	-25°C ... +40°C

#### Material properties

<b>Colour</b>	RAL 7035 grey, RAL 3000 red
<b>RoHs conformity</b>	Compliant with exemption 6(c): copper alloy containing up to 4% lead by weight
<b>China RoHs - EFUP</b>	50
<b>REACH SVHC substances</b>	Yes Lead
<b>SCIP number</b>	Ca7de37f-add8-4b77-9861-279c94903ade

#### Approvals / Standards

<b>Reference standard</b>	EN 60309-1 and -2
---------------------------	-------------------

#### General ordering information

<b>EAN13 code</b>	8015747077569
-------------------	---------------

#### Packaging Information

<b>Packaging weight</b>	1,60 kg
<b>Packaging volume</b>	6,61 dm <sup>3</sup>
<b>Packaging description</b>	Carton box
<b>Packaging quantity</b>	2 Pcs
<b>Packaging EAN code</b>	8015747077576

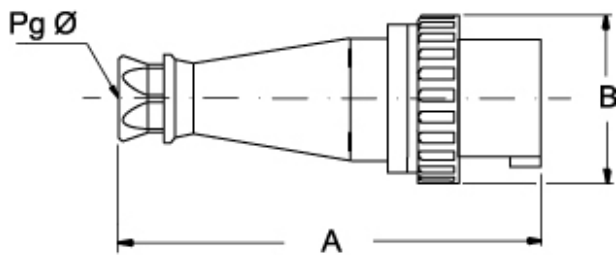
Part number

# PEW 6364 SV



## Catalogue drawings

(63 / 125A) PEW ... SV



PEW ... SV	A	B	Pg Ø
<b>63A</b> 2P+⊕	264,5	112	36
3P+⊕	264,5	112	36
3P+N+⊕	264,5	112	36
<b>125A</b> 2P+⊕	310	130	2" gas
3P+⊕	310	130	2" gas
3P+N+⊕	310	130	2" gas

## Notes

Dimensions shown in mm are not binding and may be changed without notice.

32A only version PHW...SV)

- Compliant with EN 60309-1 and -2
- Enclosure, insert and locking ring in insulating, thermoplastic, self-extinguishing material
- PE...SV types 16A and 32A (IP44), entry with cable gland colour coded according to the operating voltage, RAL 7035 grey enclosure
- PEW...SV types 16A and 32A (IP66/IP67), entry with cable gland colour coded according to the operating voltage, RAL 7035 grey enclosure, locking ring with gasket colour coded according to operating voltage
- PEW...SV types 63A and 125A (IP67), entry with cable gland, RAL 7035 grey enclosure, locking ring with gasket colour coded according to operating voltage
- PEW...SV types 63A and 125A (IP67), cable anchoring collar incorporated in the insert
- SIP version with phase inverter (3P+N+E, h6), 16A and 32A
- Terminals with retained screws
- 63A, 125A: with pilot contact
- Nickel-plated contacts standard on 63A and 125A (on 16A and