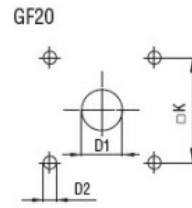
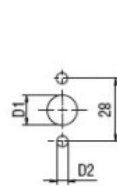
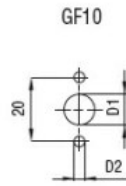
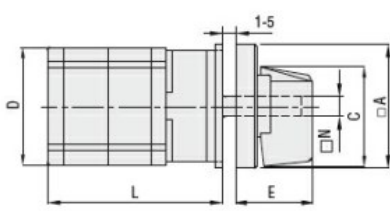


Product designation				Rotary cam switches
Product type designation				GF10
General characteristics				
Switching diagram				05 - ON/OFF switch 1 pole
N° of elements				1
Mounting form				U - Front mounting with black handle
Contact characteristics				
Rated insulation voltage U_i	IEC/EN	V	480	
	UL/CSA	V	240	
Rated impulse withstand voltage U_{imp}		kV	4	
Conventional free air thermal current I_{th}	IEC/EN	A	10	
	UL/CSA	A	10	
Rated operational voltage		V	480	
Rated operational impulse voltage		kV	4	
Maximum fuse size for short-circuit protection I_n (gG)	10kA	A	16	
Rated short time current I_{cw}	1s	A	250	
Conductivity				10/5 mA/V
Operational current I_e IEC/EN				
AC1/AC21A		A	10	
AC15	110V	A	5	
	220/230V	A	3	
	380/400V	A	2	
Rated operational power in AC				
Three-phase AC-3	220/230V	kW	1.5	
	380/440V	kW	2.2	
Single-phase AC-3	110V	kW	0.3	
	220/230V	kW	0.55	
	380/440V	kW	0.75	
Three-phase AC23A	220/230V	kW	1.8	
	380/440V	kW	3	
Single-phase AC23A	110V	kW	0.7	
	220/230V	kW	0.75	
	380/440V	kW	1.1	
Rated operational current in DC				
DC21A	48V	A	10	
	60V	A	7	
	110V	A	2	
	220V	A	0.7	

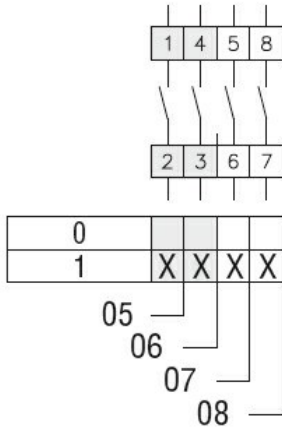
	440V	A	0.2
DC13	24V	A	3
	48V	A	3
	60V	A	2
	110V	A	1
	220V	A	0.3
	440V	A	0.1
Power dissipation		W	0.4
Mechanical features			
Terminals screw			2.5M
Tightening torque for terminals max		Nm	0.4
Conductor size			
AWG - Rigid cable	min	AWG	20
	Max	AWG	14
AWG - Flexible cable	min	AWG	20
	Max	AWG	14
Conductor size (IEC) - Flexible cable	min	mm ²	0.5
	Max	mm ²	1.5
Conductor size (IEC) - Rigid cable	min	mm ²	0.5
	Max	mm ²	1.5
Mechanical life		cycles	1x10 ⁶
UL technical data			
Motor power for direct-on-line control			
for three-phase motor	240V	HP	2
for single-phase motor	240V	HP	0.75
Ambient conditions			
Temperature			
Operating temperature	min	°C	-25
	max	°C	+55
Storage temperature	min	°C	-40
	max	°C	+70
Resistance & Protection			
Frontal IP degree			IP40
Terminals IP degree			IP20
Dimensions			



Drillings for 4 screws fixing
(4V version).

Series	Dimensions								L Number of elements											
	□A	C	D	∅D1	∅D2	E	□K	N	1	2	3	4	5	6	7	8	9	10	11	12
GF10	30	24	29	9	3.2	18.5	-	∅5	40	52	64	76	88	100	112	124	-	-	-	-
GF20	48	39.5	36	12	5	26.5	36	□6	44	57.5	71	84.5	98	111.5	125	138.5	152	165.5	179	192.5

Wiring diagrams



Certifications and compliance

Compliance

- CSA C22.2 n° 14
- IEC/EN/BS 60947-1
- IEC/EN/BS 60947-3
- IEC/EN/BS 60947-5-1
- UL60947-4-1

Certificates

- cULus
- EAC

ETIM classification

ETIM 8.0

EC001029 -
Selector switch,
complete