

# MG350C-24F/M

Instructions / instrucciones / 説明 / instruktioner /  
инструкции/ Anleitung



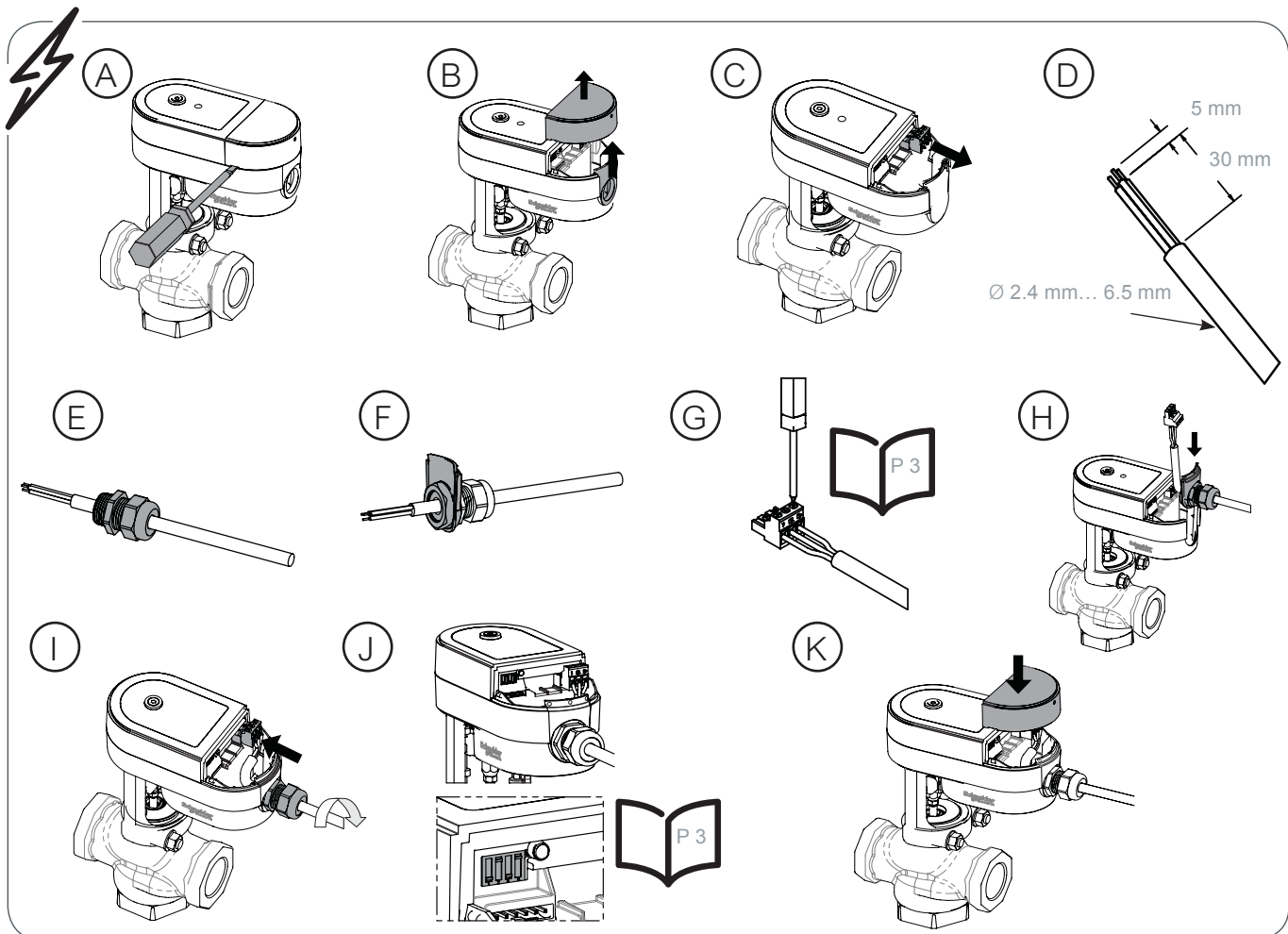
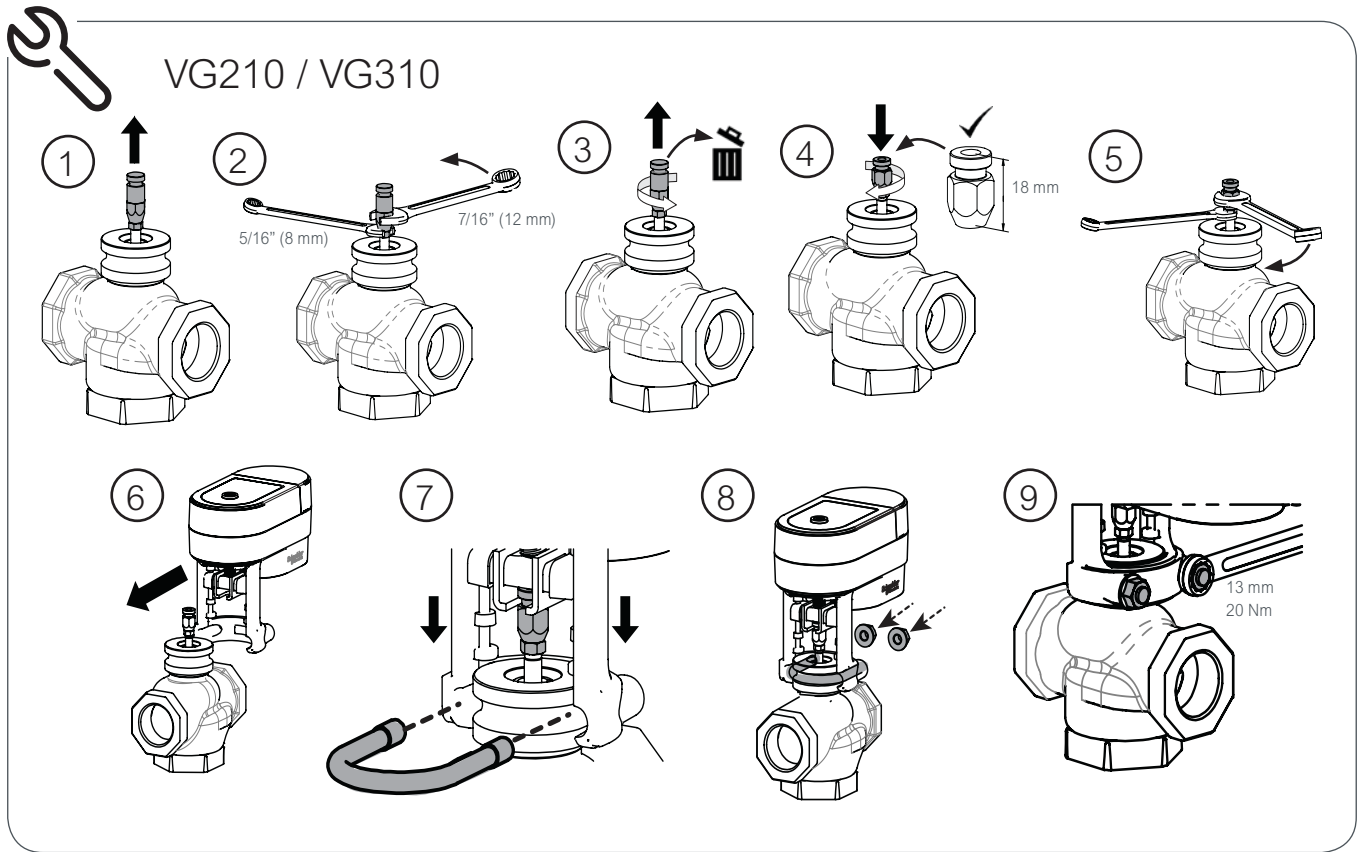
E9429  
Страна изготовитель: Швеция

<p>+55°C -5°C</p>		<p>1</p>
<p>VG210    VG310</p> <p>T° &lt; +130°C T° &gt; -5°C</p>		<p>2</p> <p>100 N 6 mm</p>
<p>IP53</p>		<p>3 mm</p>
<p>&gt; 200 mm</p>		

Europe, Middle East & Africa (Sweden): +46 10 478 2000  
 North America (USA): +1 888 444 1311  
 Asia Pacific (Singapore): +65 6484 7877  
 product.support@schneider-electric.com  
 www.schneider-electric.com

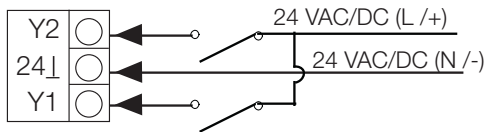
Life Is On



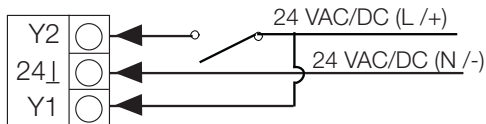


### MG350C-24F

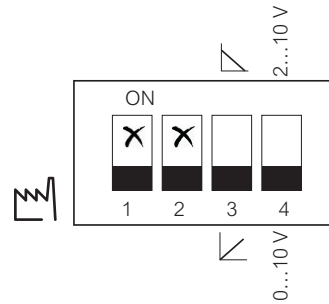
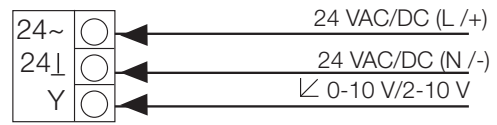
Floating



2 Position / On-Off

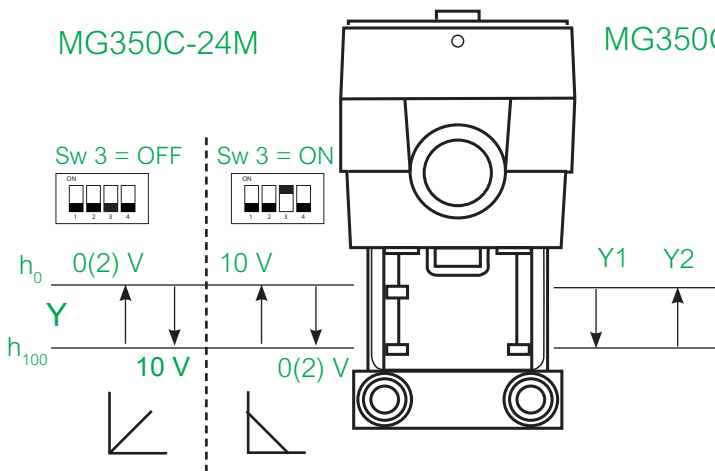


### MG350C-24M



### MG350C-24M

### MG350C-24F



#### Transformer size:

24F: 5VA  
24M: 7.2VA

Taille du transformateur  
Tamaño del transformador  
変圧器尺寸 | transformatorstorlek  
Мощность трансформатора |  
Transformatorgröße

#### Power Supply:

24 Vac  $\pm 20\%$  50/60 Hz (Class 2)

source de courant  
fuente de alimentación  
电源 | strömförsörjning | источник питания  
Spannungsversorgung

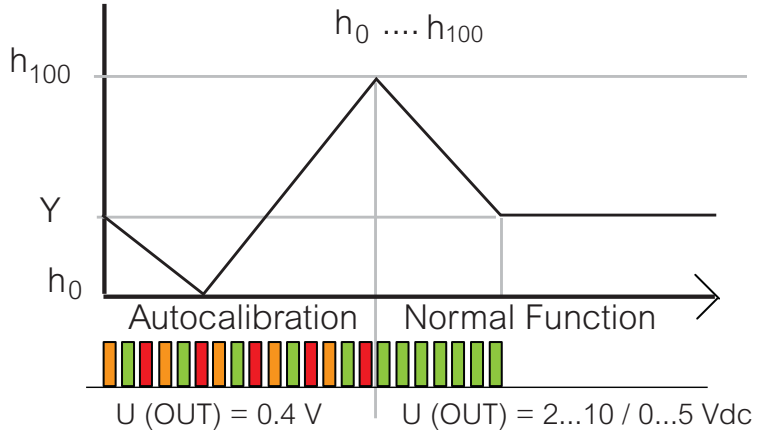
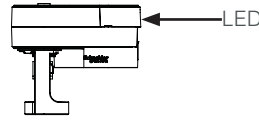
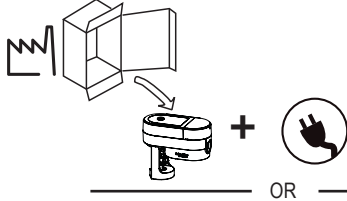
# Calibration MG350C-24M

Calibrage calibración 校准 kalibrering Калибровка Kalibrierung



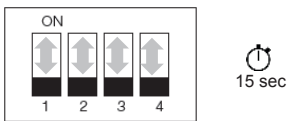
## Autocalibration

Calibrage automatique | Calibración automática | 自动校准 | automatisk kalibrering | Автоматическая калибровка | Automatische Kalibrierung



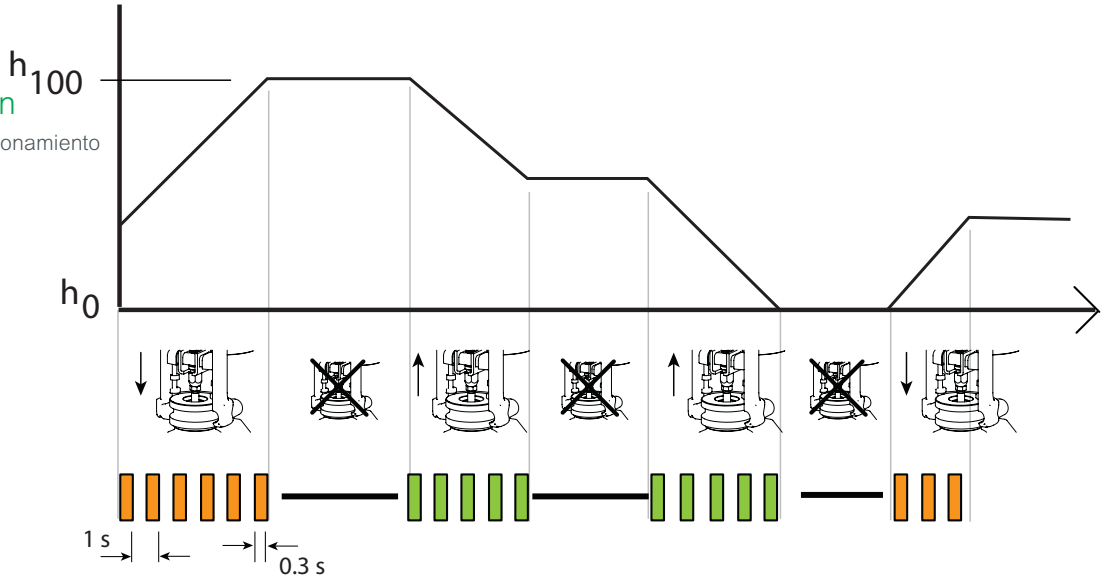
## Manual Calibration

Calibration manuelle | Calibración manual | 手动校准 | manuell kalibrering | Ручная калибровка | Manuelle Kalibrierung



## Normal Function

Función Normal | Funcionamiento normal | 正常功能 | normal funktion | Режим управления | Normalfunktion



# MG350C-24M




	LED
$h_0 - h_{100}$ AUTO CAL	
$h_0 - h_{100}$ AUTO CAL ERROR ( $h < 5mm, h > 20mm$ )	100%
BLOCKAGE $h \neq 0$	3 sec
$Y = 0V$ ( $Y \neq 2-10V$ ) (Sw.2 ON)	6 sec
FAULT/ERROR	100%

obstruction | bloqueo | 堵塞  
ström-försörjning | Блокировка |  
Spannungsversorgung

Faute / erreur | Fallo / error  
故障 / 错误 | Fel | Неисправность / ошибка  
Störung / Fehler

- Red, Rouge, Rojo  
红, Rot, Красный
- Green, Vert, Verde, 綠,  
Grön, зеленый, Grün
- Orange, Naranja, 橙  
оранжевый

Commercial Reference	Range Brand		Product Description				
AGXXXXXX AHXXXXXX	ERIE ACTUATORS		AG GENERAL CLOSEOFF NO/NC CLASS-A/F SR/NSR AH HIGH CLOSEOFF NO/NC CLASS-A/F SR/NSR				
有害物质 - Hazardous Substances							
部件名称 Part Name	铅 (Pb)	汞 (Hg)	镉 (Cd)	六价铬 (Cr (VI))	多溴联苯 (PBB)	多溴二苯醚(PBDE)	
属部件 Metal Parts	X	O	O	O	O	O	
塑料部件 Plastic Parts	O	O	O	O	O	O	
电子件 Electronic	O	O	O	O	O	O	
线缆和线缆附件 Cables & cabling accessories	O	O	O	O	O	O	
<p>本表格依据 SJ/T11364 的规定编制。</p> <p>O: 表示该有害物质在该部件所有均质材料中的含量均在 GB/T 26572 规定的限量要求以下。</p> <p>X: 表示该有害物质至少在该部件的某一均质材料中的含量超出 GB/T 26572 规定的限量要求。 (企业可在此处, 根据实际情况对上表中打 "X" 的技术原因进行进一步说明。)</p> <p>This table is made according to SJ/T 11364.</p> <p>O: indicates that the concentration of hazardous substance in all of the homogeneous materials for this part is below the limit as stipulated in GB/T 26572.</p> <p>X: indicates that concentration of hazardous substance in at least one of the homogeneous materials used for this part is above the limit as stipulated in GB/T 26572</p>							