



| | | | | |
|--|---------------------------------------|--------|----|---|
| Product designation | | | | Earth leakage relays |
| Product type designation | | | | RC |
| General characteristics | | | | |
| Description | | | | Compact, 1 operating threshold |
| N° of operating threshold | | | | 1 |
| Control circuit | | | | |
| Toroidal transformer | | | | Incorporated diam. 80mm/3.15" |
| Adjustments | | | | |
| | Tripping set-point ($I_{\Delta n}$) | | | |
| | | (x0.1) | A | 0.025...0.25 |
| | | (x1) | A | 0.25...2.5 |
| | | (x10) | A | 2.5...25 |
| | Tripping delay time | | | |
| | | (tx1) | s | 0.02...0.5 |
| | | (tx10) | s | 0.2...5 |
| Selection of multiplier for $I_{\Delta n}$ and t | | | | By dip switches |
| Resetting | | | | Configurable automatic or manual by button on front |
| Test Button | | | | Yes |
| Shunt circuit control | | | | No |
| Auxiliary supply | | | | |
| Auxiliary rated supply voltage U_s | | | | 110... 125VAC/DC;220... 240/380... 415VAC |
| Operational limits | | | | 110... 125VAC/DC or 220...240VAC or 380...415VAC |
| Output contacts | | | | 1 |
| Rated frequency | | | Hz | 50...60 |
| Power consumption Max | | | VA | 3 |
| Relay outputs | | | | |
| Relay state | | | | Normally de-energised |
| Contact arrangement | | | | 1 changeover SPDT (trip) |
| Rated contact capacity IEC Ith | | | | 5A - 250VAC |
| Insulations | | | | |
| Power frequency withstand voltage | | | kV | 2.5kV for 60s |

Indications

| | |
|----------------------------------|-----------|
| Auxiliary voltage available (ON) | Green LED |
| Relay tripping (TRIP) | Red LED |

Connections

| | |
|---------------------------------|-------|
| Terminals type | Fixed |
| Tightening torque for terminals | |

| | | |
|-----|------|-----|
| max | Nm | 0.5 |
| max | lbin | 4.5 |

Conductor section

AWG/Kcmil

| | |
|-----|----|
| min | 24 |
| max | 12 |

IEC

| | | |
|-----|-----------------|-----|
| min | mm ² | 0.2 |
| max | mm ² | 2.5 |

Operations

| | | |
|-----------------|--------|----------|
| Mechanical life | cycles | 50000000 |
| Electrical life | cycles | 300000 |

Ambient conditions

Temperature

Operating temperature

| | | |
|-----|----|-----|
| min | °C | -10 |
| max | °C | +60 |

Storage temperature

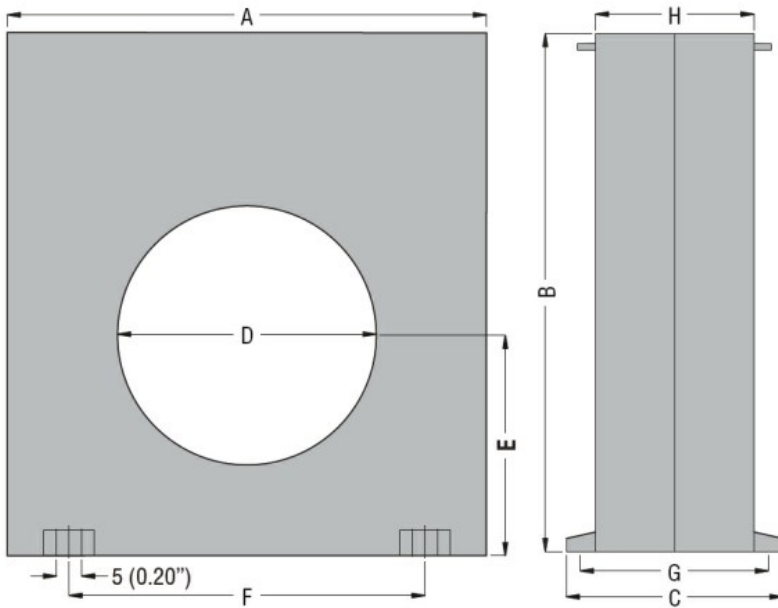
| | | |
|-----|----|-----|
| min | °C | -20 |
| max | °C | +80 |

| | | |
|-------------------|---|------|
| Relative humidity | % | ≤90% |
|-------------------|---|------|

Housing

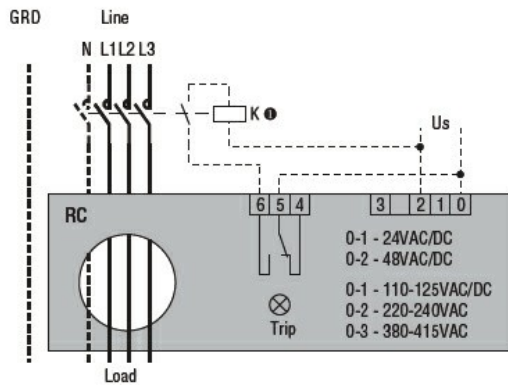
| | |
|------------------------|----------------------------------|
| Material | Self-extinguishing polycarbonate |
| Mounting | 35mm DIN rail |
| Degree of protection | IP20 terminals |
| Dimensions (W x H x D) | mm 150x160x70 |
| Weight | g 485 |

Dimensions



| TYPE | A | B | C | D | E | F | G | H |
|-------|-------------|-------------|------------|-------------|------------|-------------|------------|------------|
| RC35 | 100 (3.94") | 110 (4.33") | 70 (2.75") | 35 (1.38") | 47 (1.85") | 60 (2.36") | 60 (2.36") | 50 (1.97") |
| RC60 | 100 (3.94") | 110 (4.33") | 70 (2.75") | 60 (2.36") | 47 (1.85") | 60 (2.36") | 60 (2.36") | 50 (1.97") |
| RC80 | 150 (5.90") | 160 (6.30") | 70 (2.75") | 80 (3.15") | 70 (2.75") | 110 (4.33") | 60 (2.36") | 50 (1.97") |
| RC110 | 150 (5.90") | 160 (6.30") | 70 (2.75") | 110 (4.33") | 70 (2.75") | 110 (4.33") | 60 (2.36") | 50 (1.97") |

Wiring diagrams



Certifications and compliance

Compliant with standards

IEC/EN 60947-2

Certificates

EAC

ETIM classification

ETIM 8.0

EC001445 -
Residual current
monitoring relay