

RACCORDS INOX MOULÉS FILETÉS CLASS 150 PN20 BSP

Raccords inox moulés filetés BSP pour fluides courants compatibles du groupe 2.
Fabrication par procédé de cire perdue.



Dimensions : DN1/8" à DN4"
Raccordement : Femelle, Mâle BSP ou cannelé
Température Mini : -25°C
Température Maxi : +180°C
Pression Maxi : 20 Bars
Caractéristiques : Fabrication par procédé de cire perdue
Raccords moulés

Matière : Inox ASTM A351 CF8M

RACCORDS INOX MOULES FILETES CLASS 150 PN20 BSP
CARACTERISTIQUES :

- Fabrication par procédé de "cire perdue"
- Filetage conique BSP
- Taraudage cylindrique BSP

UTILISATION :

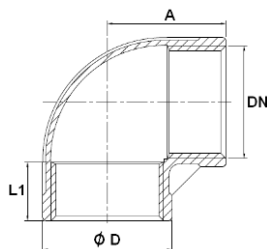
- Pour fluides courants compatibles du groupe 2
- Température mini admissible Ts : - 25°C
- Température maxi admissible Ts :+ 180°C
- Pression maxi admissible Ps : 20 bars

GAMME :

- DN 1/8" au DN 4" suivant modèles
- Raccords en inox ASTM A351 CF8M

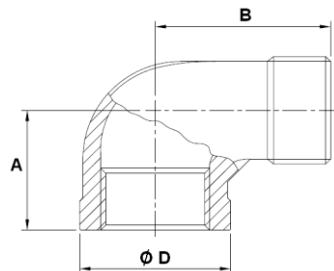
DIMENSIONS (en mm) :

- Coude 90° F. F. (DN 1/8"– 4") Ref. 2001



DN	1/8"	1/4"	3/8"	1/2"	3/4"	1"	1"1/4"	1"1/2"	2"	2"1/2"	3"	4"
A	17	19	21.5	27	30	35	43	45	54	69	77	92.5
Ø D	13.9	17.4	20.9	24.9	31.2	38.1	47.4	54.1	66.6	82.4	95.9	121.8
L1	6.5	9.7	10.1	11	11.4	13.8	14.5	14.9	15.7	25.4	27	29.5
Poids (Kg)	0.02	0.03	0.04	0.05	0.08	0.13	0.2	0.26	0.43	0.76	1.08	1.72

- Coude 90° M. F. (DN 1/8"– 3") Ref. 2010

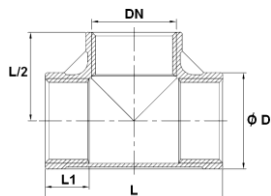


DN	1/8"	1/4"	3/8"	1/2"	3/4"	1"	1"1/4"	1"1/2"	2"	2"1/2"	3"
A	19	21.5	24.5	29	33.5	37	43	47	57.5	66	74
B	26.5	30.8	36.5	41	48	55	62	67	77.5	93	107
Ø D	13.9	17.2	20.9	24.9	31.2	38.1	47.4	54.1	66.6	87.4	101.8
Poids (Kg)	0.02	0.03	0.04	0.05	0.08	0.14	0.19	0.28	0.41	0.91	1.65

RACCORDS INOX MOULES FILETES CLASS 150 PN20 BSP

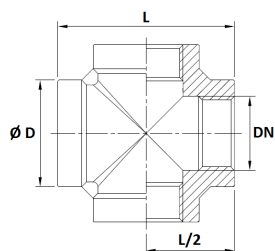
DIMENSIONS (en mm) :

- **Té F. F. F. (DN 1/8"– 4") Ref. 2003**



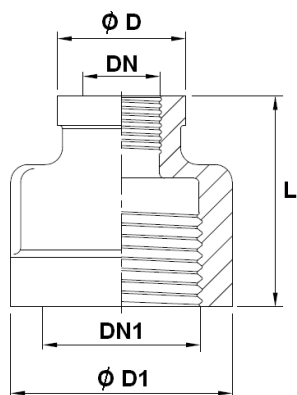
DN	1/8"	1/4"	3/8"	1/2"	3/4"	1"	1"1/4"	1"1/2"	2"	2"1/2"	3"	4"
Ø D	13.9	17.4	20.9	24.9	31.2	38.1	47.4	54.1	66.6	82.4	95.9	121.8
L	34	39	44	55	60	70	85	89	107	136	154	185
L1	6.5	9.7	10.1	11	11.4	13.8	14.5	14.9	15.7	25.4	27	29.5
Poids (Kg)	0.03	0.04	0.06	0.07	0.11	0.17	0.26	0.34	0.53	0.88	1.2	2.06

- **Croix F. F. F. (DN 1/8"– 4") Ref. 2002**



DN	1/8"	1/4"	3/8"	1/2"	3/4"	1"	1"1/4"	1"1/2"	2"	2"1/2"	3"	4"
Ø D	14.8	18.5	22.1	28.8	33.7	42	50.4	57.1	69.2	89.2	99.5	126
L	34.1	38	44	55	63.4	73.2	85.6	89.8	108	137.2	143	180
L/2	17.05	19	22	27.5	31.7	36.6	42.8	44.9	54	86.6	71.5	90
Poids (Kg)	0.04	0.06	0.08	0.16	0.22	0.37	0.48	0.57	0.9	1.61	2	3.3

- **Réduction F. F. (DN 1/8"– 2") Ref. 2013**

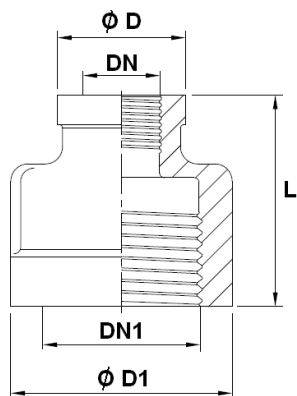


DN	1/8"	1/4"	3/8"	1/2"	3/4"	1"	1"1/4"	1"1/2"
DN1	1/4"	3/8"	1/2"	3/4"	1"	1"1/4"	1"1/2"	2"
Ø D	15.5	18.2	23	28	34	41.6	50	57
Ø D1	18	22	28.5	34	41.5	50	57	70
L	24	29	34.5	36.5	41.5	47	51.5	59
Poids (Kg)	0.02	0.03	0.07	0.08	0.12	0.19	0.24	0.39

RACCORDS INOX MOULES FILETES CLASS 150 PN20 BSP

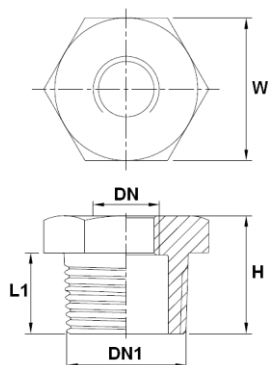
DIMENSIONS (en mm) :

- **Double réduction F. F. (DN 1/8"– 2") Ref. 2014**



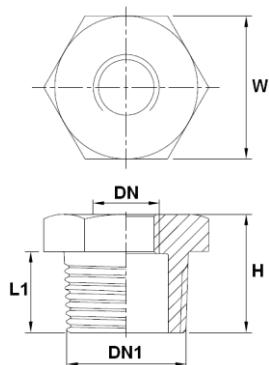
DN	1/8"	1/4"	3/8"	1/2"	3/4"	1"	1"1/4"
DN1	3/8"	1/2"	3/4"	1"	1"1/4"	1"1/2"	2"
Ø D	18.1	19.5	28.2	29	34	41.5	56.5
Ø D1	22	28.5	34	41.5	50	57	70
L	29	34	36.5	42	46	50	59
Poids (Kg)	0.04	0.06	0.09	0.12	0.18	0.24	0.45

- **Réduction M. F. (DN 1/8"– 2") Ref. 2021**



DN	1/8"	1/4"	3/8"	1/2"	3/4"	1"	1"1/4"	1"1/2"
DN1	1/4"	3/8"	1/2"	3/4"	1"	1"1/4"	1"1/2"	2"
H	15	16.5	20	21.5	24.5	27.5	28	31
L1	12.5	13	16	17	20	22	22	23.5
W	15	18	23	29	35	45	50	62
Poids (Kg)	0.01	0.02	0.03	0.04	0.07	0.11	0.13	0.23

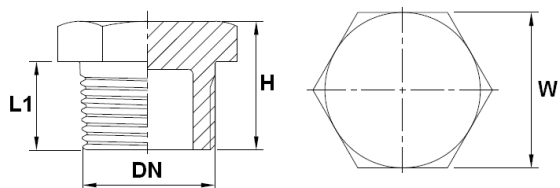
- **Double réduction M. F. (DN 1/8"– 2") Ref. 2024**



DN	1/8"	1/4"	3/8"	1/2"	3/4"	1"	1"1/4"
DN1	3/8"	1/2"	3/4"	1"	1"1/4"	1"1/2"	2"
H	16.5	20	21.5	24.5	27.5	28	31
L1	13	16	17	20	22	22	23.5
W	18	23	29	35	45	50	62
Poids (Kg)	0.02	0.03	0.05	0.08	0.13	0.16	0.28

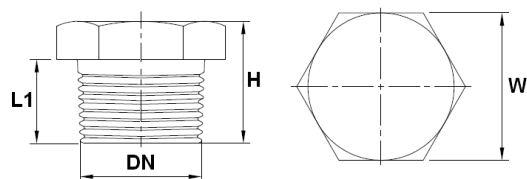
RACCORDS INOX MOULES FILETES CLASS 150 PN20 BSP
DIMENSIONS (en mm) :

- **Bouchon mâle creux (DN 1/2" – 2") Ref. 2022**



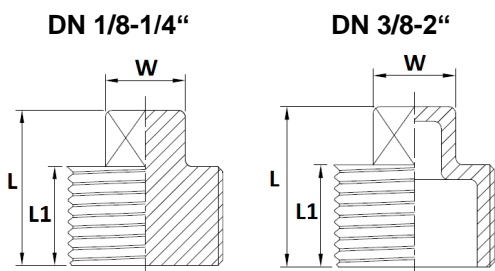
DN	1/2"	3/4"	1"	1"1/4"	1"1/2"	2"
H	22.6	23.3	26.8	30.5	30.8	34
L1	16	16.5	19	21	21	22.8
W	25.2	29.7	36.5	45.3	51.4	62.5
Poids (Kg)	0.04	0.06	0.09	0.14	0.19	0.28

- **Bouchon mâle plein (DN 1/8" – 2") Ref. 2023**



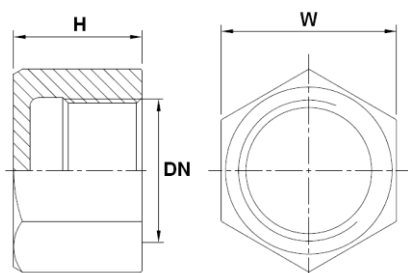
DN	1/8"	1/4"	3/8"	1/2"	3/4"	1"	1"1/4"	1"1/2"	2"
H	19	19	19	22	26	28	33	35	39
L1	11	12	13	16	17	19	21	23	27
W	12	16	19	23	28	36	46	50	65
Poids (Kg)	0.01	0.02	0.04	0.06	0.12	0.2	0.38	0.51	0.91

- **Bouchon mâle tête carrée (DN 1/8" – 2") Ref. 2020**



DN	1/8"	1/4"	3/8"	1/2"	3/4"	1"	1"1/4"	1"1/2"	2"
L	18	20	20	25	26.5	33	35	35	40
L1	11	12	12	15	15.5	20	20	20	23
W	7.2	8	10	13	16	19	22	25	29
Poids (Kg)	0.01	0.02	0.02	0.03	0.04	0.08	0.12	0.14	0.22

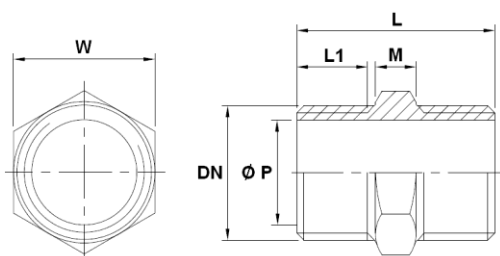
- **Bouchon femelle hexagonal (DN 1/4" – 2") Ref. 2037**



DN	1/4"	3/8"	1/2"	3/4"	1"	1"1/4"	1"1/2"	2"
H	17	17.5	20	20.4	27.1	30	30.3	32.3
W	17.5	21.2	25.5	30.1	37.4	47	53.2	66
Poids (Kg)	0.02	0.03	0.04	0.05	0.1	0.15	0.19	0.3

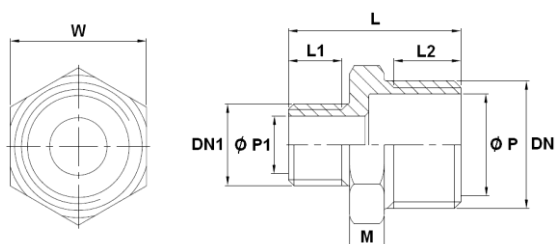
RACCORDS INOX MOULES FILETES CLASS 150 PN20 BSP
DIMENSIONS (en mm) :

- Mamelon hexagonal (DN 1/8"– 2") Ref. 2030



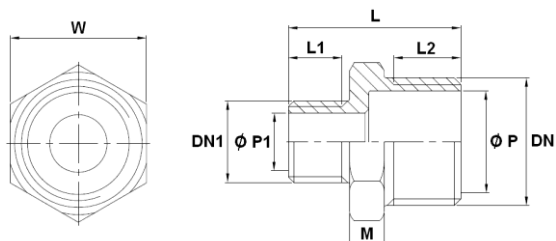
DN	1/8"	1/4"	3/8"	1/2"	3/4"	1"	1"1/4"	1"1/2"	2"
L	30	32	32	41	43.5	49	52	52	55
L1	12	13	13	16.5	17.8	19.5	21	21	22
M	6	6	6	8	8.5	10	10	10	11
Ø P	5.5	8.2	11.8	15.2	21	26.5	35	41	53
W	13	15	18	23	29	35	45	50	62
Poids (Kg)	0.02	0.02	0.03	0.05	0.07	0.11	0.17	0.21	0.31

- Réduction mâle - mâle (DN 1/8"– 2") Ref. 2031



DN	1/4"	3/8"	1/2"	3/4"	1"	1"1/4"	1"1/2"	2"
DN1	1/8"	1/4"	3/8"	1/2"	3/4"	1"	1"1/4"	1"1/2"
L	31	34	36.5	41	45	51	53	55.5
L1	12	13	13	17	16	20	21	21.5
L2	13	14	16.5	17.5	20	21	21.5	23
M	6	7	7	7	9	10	10.5	11
Ø P	8.2	11.8	15.2	21	27	35	41	51.8
Ø P1	5.5	8.2	11.8	15.2	21	27	35	41
W	15	18.8	23	28.5	35.5	45	51	62
Poids (Kg)	0.02	0.03	0.04	0.06	0.1	0.17	0.24	0.31

- Double réduction mâle - mâle (DN 1/8"– 2") Ref. 2032

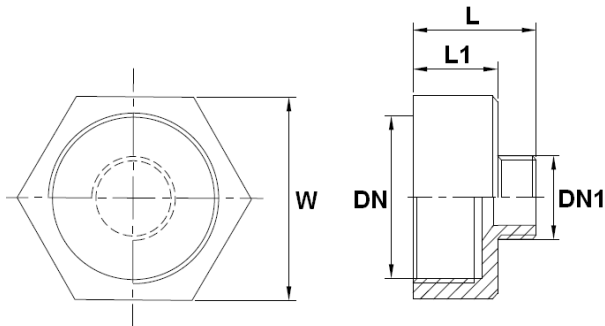


DN	3/8"	1/2"	3/4"	1"	1"1/4"	1"1/2"	2"
DN1	1/8"	1/4"	3/8"	1/2"	3/4"	1"	1"1/4"
L	34	36.5	41	45	48.5	52	55.5
L1	10	11	12	14	14	17.5	18
L2	14	16.5	17.5	20	21	21.5	23
M	7	7	7	9	10	10.5	11
Ø P	11.8	15.2	21	27	35	41	51.8
Ø P1	5.5	8.2	11.8	15.2	21	27	35
W	18.8	23	28.5	35.5	45	51	62
Poids (Kg)	0.03	0.04	0.06	0.1	0.16	0.24	0.31

RACCORDS INOX MOULES FILETES CLASS 150 PN20 BSP

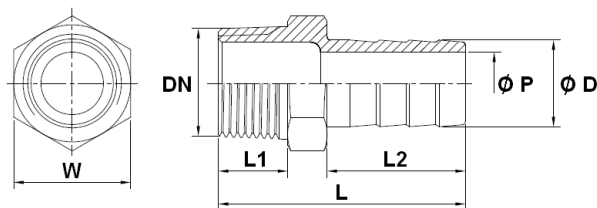
DIMENSIONS (en mm) :

- Réduction femelle - mâle (DN 1/8"– 2") Ref. 2033



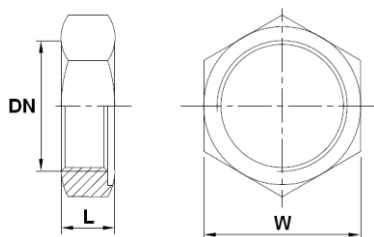
DN	1/4"	3/8"	1/2"	3/4"	1"	1"1/4"	1"1/2"	2"
DN1	1/8"	1/4"	3/8"	1/2"	3/4"	1"	1"1/4"	1"1/2"
L	27	31	35	38.5	44	47	50	53
L1	16.5	18.5	22	23	26	27	28	30
W	17	21	26	32	38	46	54	63
Poids (Kg)	0.02	0.04	0.07	0.1	0.13	0.17	0.27	0.29

- Embout tétine mâle (DN 1/4"– 2") Ref. 2035



DN	1/4"	3/8"	1/2"	3/4"	1"	1"1/4"	1"1/2"	2"
L	43	49	56.5	60	69	70	80	88
L1	11.5	13	15	15.5	19	22	22	22.5
L2	25	29.5	33	34	39	37	47.5	53.5
Ø D	8	10	13	20	25	32	40	51.5
Ø P	4	5	7	15	19.5	26.5	33.5	44
W	15	19	23	28	37	45	50	62
Poids (Kg)	0.02	0.03	0.06	0.08	0.13	0.2	0.29	0.44

- Ecrou hexagonal (DN 1/8"– 2") Ref. 2036



DN	1/8"	1/4"	3/8"	1/2"	3/4"	1"	1"1/4"	1"1/2"	2"
L	6.3	7	7.5	7.7	9.2	9	11.7	11.8	13.1
W	17.3	19.1	25.3	30.1	34.4	43.2	52	58.1	71.9
Poids (Kg)	0.01	0.01	0.02	0.02	0.03	0.05	0.09	0.1	0.16

RACCORDS INOX MOULES FILETES CLASS 150 PN20 BSP

NORMALISATIONS :

- Fabricant certifié ISO 9001 : 2015
- DIRECTIVE 2014/68/UE : Produits exclus de la directive (Article 4,§3)
- Filetage mâle BSP conique suivant la norme ISO 7/1 R pour les embouts 2010, 2020, 2021, 2022, 2023, 2024, 2030, 2031, 2032, 2033 et 2035
- Taraudage cylindrique BSP suivant la norme ISO 7/1 Rp pour les raccords 2001, 2002, 2003, 2010, 2013, 2014, 2021, 2024, 2033, 2036 et 2037

PRECONISATIONS : Les avis et conseils, les indications techniques, les propositions, que nous pouvons être amenés à donner ou à faire, n'impliquent de notre part aucune garantie. Il ne nous appartient pas d'apprécier les cahiers des charges ou descriptifs fournis. Il appartient au client de vérifier l'adéquation entre le choix du matériel et les conditions réelles d'utilisation.