


55503624	<b>DATA SHEET</b>	
Valid from: 03.07.2018	<b>SILVYN® FCE COMPACT</b>	

SILVYN® FCE COMPACT is a conduit gland made of nickel plated brass and is resistant to corrosion, UV and ozone. The gland is suitable to the protection conduits SILVYN® FCE-V0 and SILVYN® FCE-LFH.



**Material:**

Body	Nickel plated brass
Sleeve	Nickel plated brass
Pressure ring	Nickel plated brass
Nut	Nickel plated brass
Sealing	NBR
O-Ring	EPDM

**Technical Features:**

Connecting thread	M12x1,5 up to M40x1,5
Nominal wide	NW 12 up to NW40
Protection class	IP68 acc. to DIN EN 60529
Temperature range:	Depending on the used conduit -45°C up to +105°C

**Additional features:**

Fire Classification	V0 acc. to UL 94
Rugged	
Resistant to corrosion	
UV- and Ozone resistant	

**Color:**

Metallic shiny



**Approbation:**


**Reference standards:**

EN 61386-1

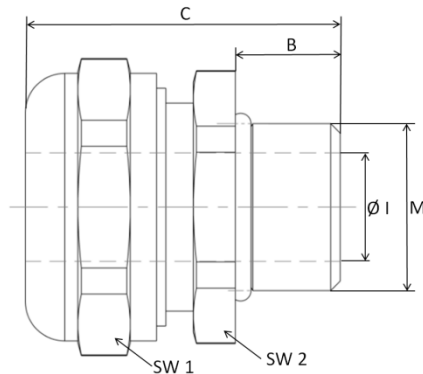
**Suitable conduits:**

SILVYN® FCE-V0  
SILVYN® FCE-LFH

Creator: MAU1/PDP Released: DAMU1/PDP	Document: DB55503624EN Version: 01	Page 1 of 2
--	---------------------------------------	-------------

55503624	<b>DATA SHEET</b>	
Valid from: 03.07.2018	<b>SILVYN® FCE COMPACT</b>	

**Product drawing:**



**Dimension table:**

Part No.	NW	Thread M	Thread length B mm	Inner Diameter Ø I mm	Length C mm	SW 1	SW 2	Weight Kg/100
5550 3624	12	M12x1,5	10	8,5	31	22	20	3,8
5550 3625	16	M16x1,5	10	11,2	30	26	24	4,2
5550 3626	16	M20x1,5	10	11,2	30	26	24	4,4
5550 3627	20	M20x1,5	10	15,2	32	29	27	5,0
5550 3628	25	M25x1,5	10	19,2	33	35	33	7,4
6180 3855	32	M32x1,5	12	25,9	36	45	44	13,9
6180 3856	40	M40x1,5	14	34,5	45	59	55	18,8

For more information please see our current catalogue. Please do not hesitate to contact our laboratory if there are any questions regarding resistance against aggressive agents and special oil.

Creator: MAU1/PDP Released: DAMU1/PDP	Document: DB55503624EN Version: 01	Page 2 of 2
--	---------------------------------------	-------------