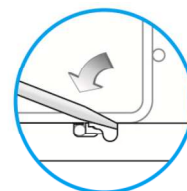
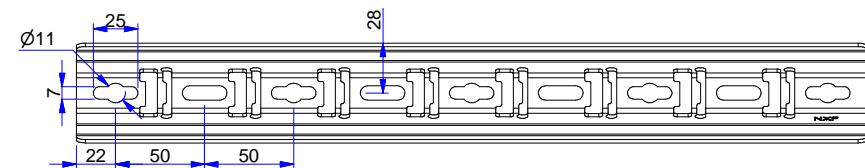
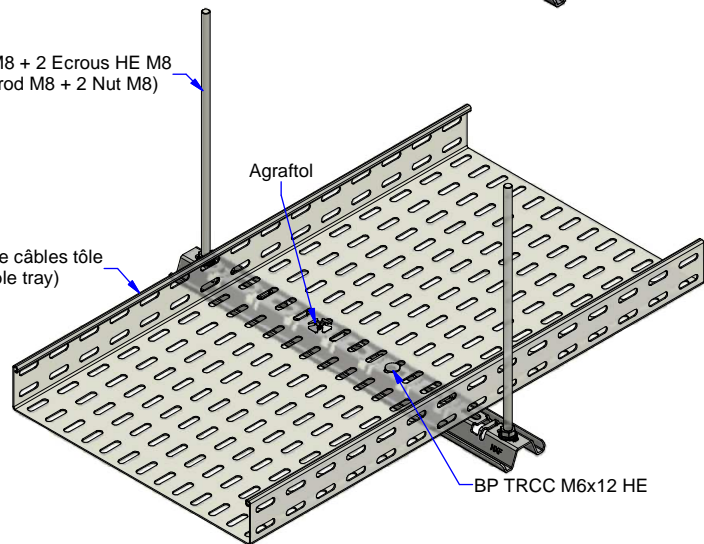


Tige filetée M8 + 2 Ecrous HE M8
(Threaded rod M8 + 2 Nut M8)

Agrafitol

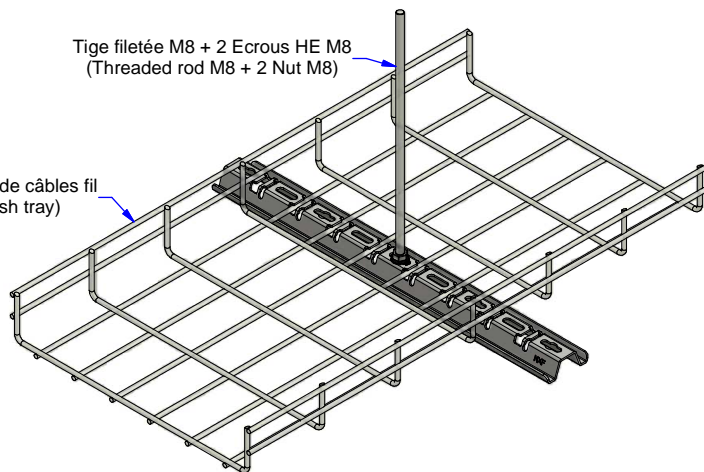
Chemin de câbles tôle
(Cable tray)

BP TRCC M6x12 HE



Tige filetée M8 + 2 Ecrous HE M8
(Threaded rod M8 + 2 Nut M8)

Chemin de câbles fil
(Mesh tray)



Description	Code	Masse/Weight Kg/p	Ep./Th. mm	l./w. mm
S100U 200 ZM	748101	0,23	2,00	194
S100U 250 ZM	748102	0,28	2,00	244
S100U 350 ZM	748103	0,39	2,00	344
S100U 450 ZM	748104	0,49	2,00	444
S100U 550 ZM	748105	0,61	2,00	544
S100U 650 ZM	748106	0,75	2,00	644

ZM : High performance coated zinc according to NF A 91102
ZM : Revêtement haute tenue corrosion suivant NF A 91102



www.niedaxfrance.fr

RAIL U S100U ZM
CHANNEL S100U ZM



ASSISTANCE TECHNIQUE
+33 (0)1 55 95 92 17
pole.technique@niedax.fr

FT02015

NIEDAX
France

