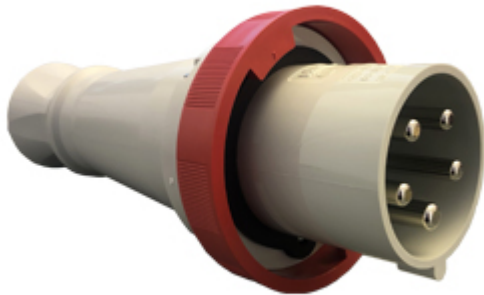



Part number

# PEW 6365 SV



Mobile plug, PLUSO series, 3 poles + N + PE, 6 h (red), 63 A, 380 ÷ 415 V, straight

Product description		Material properties	
<b>Product type</b>	Plug Mobile	<b>Colour</b>	RAL 7035 grey, RAL 3000 red
<b>Series</b>	PEW...SV, PLUSO	<b>RoHs conformity</b>	Compliant with exemption 6(c): copper alloy containing up to 4% lead by weight
<b>Connection type</b>	Screw terminal connection	<b>China RoHs - EFUP</b>	50
<b>N. of poles</b>	3 poles + N + 	<b>REACH SVHC substances</b>	Yes Lead
<b>Clock position</b>	6	<b>SCIP number</b>	Ca7de37f-add8-4b77-9861-279c94903ade
<b>Specification</b>	Straight	Approvals / Standards	
Technical data		<b>Reference standard</b>	EN 60309-1 and -2
<b>Current</b>	63 A	General ordering information	
<b>Voltage</b>	380 ÷ 415 V	<b>EAN13 code</b>	8015747077736
<b>IP degree of protection</b>	IP67	Packaging Information	
Further technical details		<b>Packaging weight</b>	1,76 kg
<b>Weight</b>	768,00 g	<b>Packaging volume</b>	6,61 dm <sup>3</sup>
<b>Operating temperature range (min, max)</b>	-25°C ... +40°C	<b>Packaging description</b>	Carton box
		<b>Packaging quantity</b>	2 Pcs
		<b>Packaging EAN code</b>	8015747077743

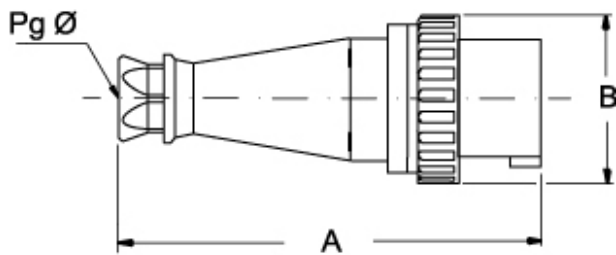
Part number

# PEW 6365 SV



## Catalogue drawings

(63 / 125A) PEW ... SV



PEW ... SV	A	B	Pg Ø
<b>63A</b> 2P+⊕	264,5	112	36
3P+⊕	264,5	112	36
3P+N+⊕	264,5	112	36
<b>125A</b> 2P+⊕	310	130	2" gas
3P+⊕	310	130	2" gas
3P+N+⊕	310	130	2" gas

## Notes

Dimensions shown in mm are not binding and may be changed without notice.

32A only version PHW...SV)

- Compliant with EN 60309-1 and -2
- Enclosure, insert and locking ring in insulating, thermoplastic, self-extinguishing material
- PE...SV types 16A and 32A (IP44), entry with cable gland colour coded according to the operating voltage, RAL 7035 grey enclosure
- PEW...SV types 16A and 32A (IP66/IP67), entry with cable gland colour coded according to the operating voltage, RAL 7035 grey enclosure, locking ring with gasket colour coded according to operating voltage
- PEW...SV types 63A and 125A (IP67), entry with cable gland, RAL 7035 grey enclosure, locking ring with gasket colour coded according to operating voltage
- PEW...SV types 63A and 125A (IP67), cable anchoring collar incorporated in the insert
- SIP version with phase inverter (3P+N+E, h6), 16A and 32A
- Terminals with retained screws
- 63A, 125A: with pilot contact
- Nickel-plated contacts standard on 63A and 125A (on 16A and