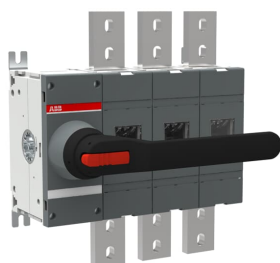


PRODUCT-DETAILS

OT1600E03K

OT1600E03K SWITCH-DISCONNECTOR



Informations générales

Extension du type de produit	OT1600E03K
Code de produit	1SCA108352R1001
EAN	6417019416748
Description courte	OT1600E03K SWITCH-DISCONNECTOR
Description longue	3-pole, front operated, base mounted switch-d disconnector with black direct mount handle, terminal bolt kit included

Valeur Circulaire

Conflict Minerals Reporting Template (CMRT)	9AKK108467A5658
Instructions relatives à la fin de vie	1SCC301120M0201
Informations environnementales	1SCC301233D0201
Environmental Product Declaration - EPD	1SCC301300D0201
REACH Declaration	1SCC011021D0201
Informations RoHS	1SCC011020D0201
Toxic Substances Control Act - TSCA	1SCC011025D0201

Eco Transparence

Environmental Product Declaration - EPD	1SCC301300D0201
---	-----------------

Commande

Quantité minimum	1 pièce
Code douanier	85365080
Pays d'origine	Finland (FI)

Downloads Préférés

Fiche produit, informations techniques	1SCC301020C0201
Instructions et manuels	1SCC301047M0213
Mechanical Drawings	1SCC301725F0002 1SCC301724F0002
Environmental Product Declaration - EPD	1SCC301300D0201
Instructions relatives à la fin de vie	1SCC301120M0201

Dimensions

Produit Largeur Net	334.5 mm
Produit Hauteur Net	372 mm
Produit Longueur Net	237.5 mm
Poids net	17.7 kg

Technique

Rated Operational Current AC-21A (I_e)	(380 ... 415 V) 1600 A (500 V) 1600 A (690 V) 1600 A (1000 V) 1600 A
Rated Operational Current AC-22A (I_e)	(380 ... 415 V) 1600 A (500 V) 1600 A (690 V) 1600 A
Rated Operational Current AC-23A (I_e)	(380 ... 415 V) 1250 A (500 V) 1250 A (690 V) 1250 A
Rated Operational Power AC-23A (P_e)	(400 ... 415 V) 710 kW (500 V) 900 kW (690 V) 1200 kW
Courant thermique conventionnel à l'air libre (I_{th})	$\Theta = 40\text{ °C}$ 1600 A
Conventional Thermal Current (I_{the})	Fully Enclosed 1600 A
Tension assignée de tenue aux chocs (U_{imp})	12 kV
Tension assignée d'isolement (U_i)	acc. to IEC/EN 60664-1 1000 V
Tension	Circuit principal 1000 V
Rated Short-Circuit Making Capacity (I_{cm})	(690 V) 110 kA

Courant assigné de courte durée admissible (I_{cw})	for 1 s 50 kA
Rated Conditional Short-Circuit Current (I_{nc})	(1250 A fuse, 415 V) 80 kA (1250 A fuse, 500 V) 100 kA
Power Loss	at Rated Operating Conditions per Pole 48 W
Degré de pollution	3
Handle Color	Black
Handle Type	Direct mounted pistol type handle
Switches Operating Mechanism	Mechanism at the End of the Switch 03 (Left Side)
Distance Between Phases	Standard
Position of Line Terminals	Top In - Bottom Out Bottom In - Top Out
Mode de fonctionnement	Front operated
Normes et standards	IEC 60947-3
Fonctions spéciales	No
Type de montage	Base mounting
Nombre de pôles	3
Indice de protection	Front IP00
Type de borne	Lug terminals
Couple de serrage	acc. IEC 60947-1 50 ... 75 N·m
Durabilité mécanique	6000
Lock Type	Yes

Technique UL/CSA

Couple de serrage	acc. IEC 60947-1 50 ... 75 N·m
-------------------	--------------------------------

Environnement

Statut RoHS	Following EU Directive 2011/65/EU and Amendment 2015/863 July 22, 2019
Informations environnementales	1SCC301233D0201
Toxic Substances Control Act - TSCA	1SCC011025D0201

Certificats et Déclarations (Numéro de document)

Certificat ATEX	No certification needed
Déclaration de Conformité - CE	1SCC301155D2704
DNV GL Certificate	1SCC301184D0203
REACH Declaration	1SCC011021D0201
Certificat UL	No certification needed
VDE Certificate	No certification needed

Emballage

Emballage Niveau 1 Unités	box 1 pièce
Emballage Niveau 1 Largeur	400 mm
Emballage Niveau 1	400 mm

Longueur

Emballage Niveau 1 Hauteur	325 mm
-------------------------------	--------

Emballage Niveau 1 Poids	19.4 kg
--------------------------	---------

Emballage Niveau 1 EAN	6417019416748
------------------------	---------------

Classifications

Code de classification d'objet	Q
-----------------------------------	---

ETIM 7	EC000216 - Switch disconnecter
--------	--------------------------------

ETIM 8	EC000216 - Switch disconnecter
--------	--------------------------------

ETIM 9	EC000216 - Switch disconnecter (low voltage)
--------	--

eClass	V11.1 : 27371403
--------	------------------

Catégorie DEEE	5. Small Equipment (No External Dimension More Than 50 cm)
----------------	--

E-Number (Finland)	3660818
--------------------	---------

Catégories

Produits basse tension → Interrupteurs → Interrupteurs-sectionneurs

