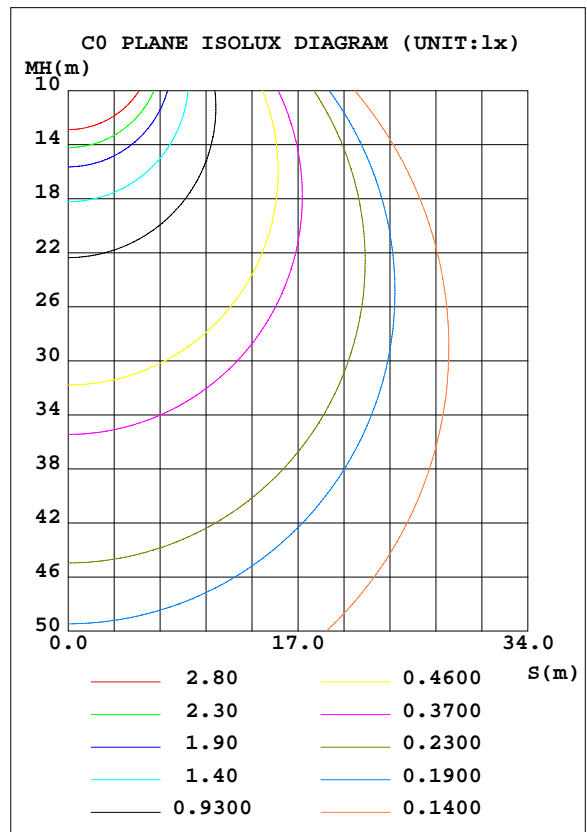
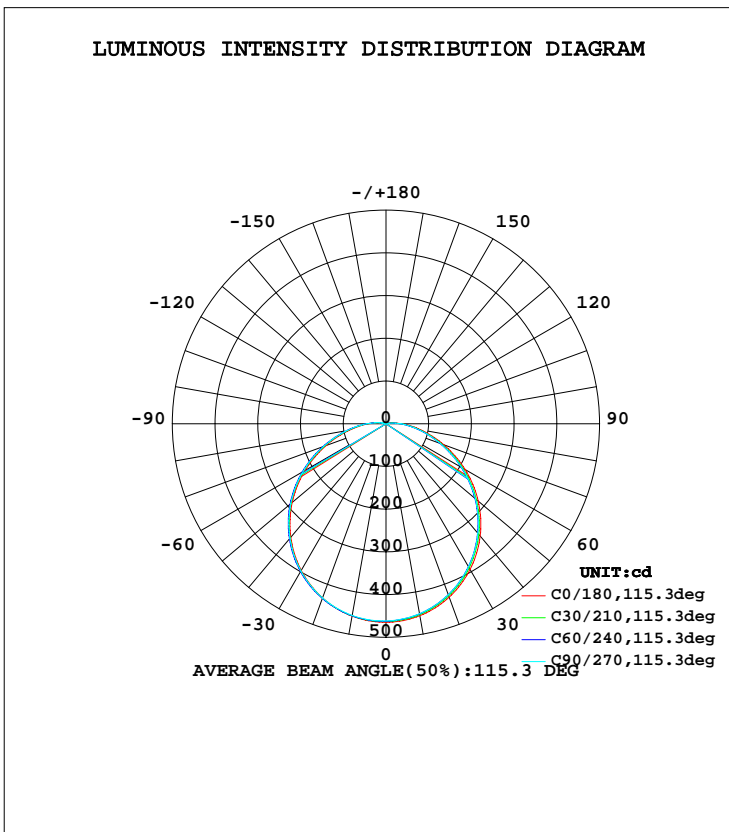


LUMINAIRE PHOTOMETRIC TEST REPORT

Test:U:229.7V I:0.0815A P:14.90W PF:0.7959 Lamp Flux:1455.87x1 lm		
NAME: LED LIGHT	TYPE:CEILING LIGHT	WEIGHT:
SPEC.:0028920011	DIM.: $\varnothing$ 308*98mm	SERIAL No.:
MFR.: LiT	SUR.: $\varnothing$ 263.7mm	PROTECTION ANGLE:

DATA OF LAMP		PHOTOMETRIC DATA				Eff: 97.74 lm/W
MODEL	0028920011	I <sub>max</sub> (cd)	464.8	S/MH(C0/180)	1.27	
NOMINAL POWER(W)	15	LOR(%)	100.0	S/MH(C90/270)	1.28	
RATED VOLTAGE(V)	220-240	TOTAL FLUX(lm)	1455.9	$\eta$ UP, DN(C0-180)	1.1,47.6	
NOMINAL FLUX(lm)	1455.87	CIE CLASS	DIRECT	$\eta$ UP, DN(C180-360)	1.4,50.0	
LAMPS INSIDE	1	$\eta$ up(%)	2.4	CIBSE SHR NOM	1.25	
TEST VOLTAGE(V)	230	$\eta$ down(%)	97.6	CIBSE SHR MAX	1.35	



C Range: 0 - 360DEG  
 C Interval: 30.0DEG  
 Test Speed: HIGH  
 Temperature:25.3DEG  
 Operators:  
 Test Date:2021-03-04

$\gamma$  Range: 0 - 180DEG  
 $\gamma$  Interval: 1.0DEG  
 Test System:EVERFINE GO-2000B\_V1 SYSTEM V2.0.291  
 Humidity:65.0%  
 Test Distance:5.910m [K=1.0000]  
 Remarks:

ZONAL FLUX DIAGRAM

ZONAL FLUX DIAGRAM:

γ	C0	C45	C90	C135	C180	C225	C270	C315	γ	Φ zone	Φ total	#lum,lamp
10	456.3	452.8	451.6	451.7	457.1	456.7	455.7	453.9	0- 10	43.74	43.74	3,3
20	432.2	427.4	426.1	427.1	434.0	435.0	434.1	431.6	10- 20	125.4	169.2	11.6,11.6
30	393.8	387.8	386.5	388.5	396.6	399.0	398.3	395.0	20- 30	190.6	359.8	24.7,24.7
40	343.0	335.9	334.6	337.7	346.7	350.5	350.0	345.8	30- 40	231.1	590.8	40.6,40.6
50	282.0	274.1	272.8	277.0	286.5	291.6	291.2	286.5	40- 50	242.1	832.9	57.2,57.2
60	213.7	205.5	204.3	209.1	218.9	225.0	224.7	219.6	50- 60	222.9	1056	72.5,72.5
70	143.9	136.5	135.6	140.1	149.2	155.5	155.5	150.3	60- 70	178.3	1234	84.8,84.8
80	82.61	76.94	76.55	80.05	86.99	92.35	92.53	88.06	70- 80	120.4	1355	93,93
90	37.62	34.10	34.04	36.23	40.55	44.38	44.72	41.48	80- 90	65.79	1420	97.6,97.6
100	10.97	9.763	9.860	10.90	12.75	14.82	14.86	13.27	90-100	26.33	1447	99.4,99.4
110	1.292	1.185	1.254	1.713	1.958	2.551	2.373	2.020	100-110	6.214	1453	99.8,99.8
120	0.4539	0.4748	0.4819	0.5629	0.5362	0.4716	0.4541	0.4576	110-120	0.8151	1454	99.9,99.9
130	0.5766	0.5815	0.5793	0.5607	0.5840	0.5537	0.5444	0.5665	120-130	0.4677	1454	99.9,99.9
140	0.6717	0.6823	0.6835	0.6661	0.6906	0.6592	0.6463	0.6707	130-140	0.4799	1455	99.9,99.9
150	0.7645	0.7599	0.7669	0.7495	0.7831	0.7530	0.7413	0.7634	140-150	0.4510	1455	100,100
160	0.8386	0.8266	0.8341	0.8201	0.8503	0.8305	0.8108	0.8329	150-160	0.3689	1456	100,100
170	0.8767	0.8615	0.8619	0.8630	0.8859	0.8678	0.8549	0.8751	160-170	0.2412	1456	100,100
180	0.8804	0.8827	0.8827	0.8838	0.8896	0.8815	0.8804	0.8804	170-180	0.0835	1456	100,100
DEG	LUMINOUS INTENSITY:cd									UNIT:lm		

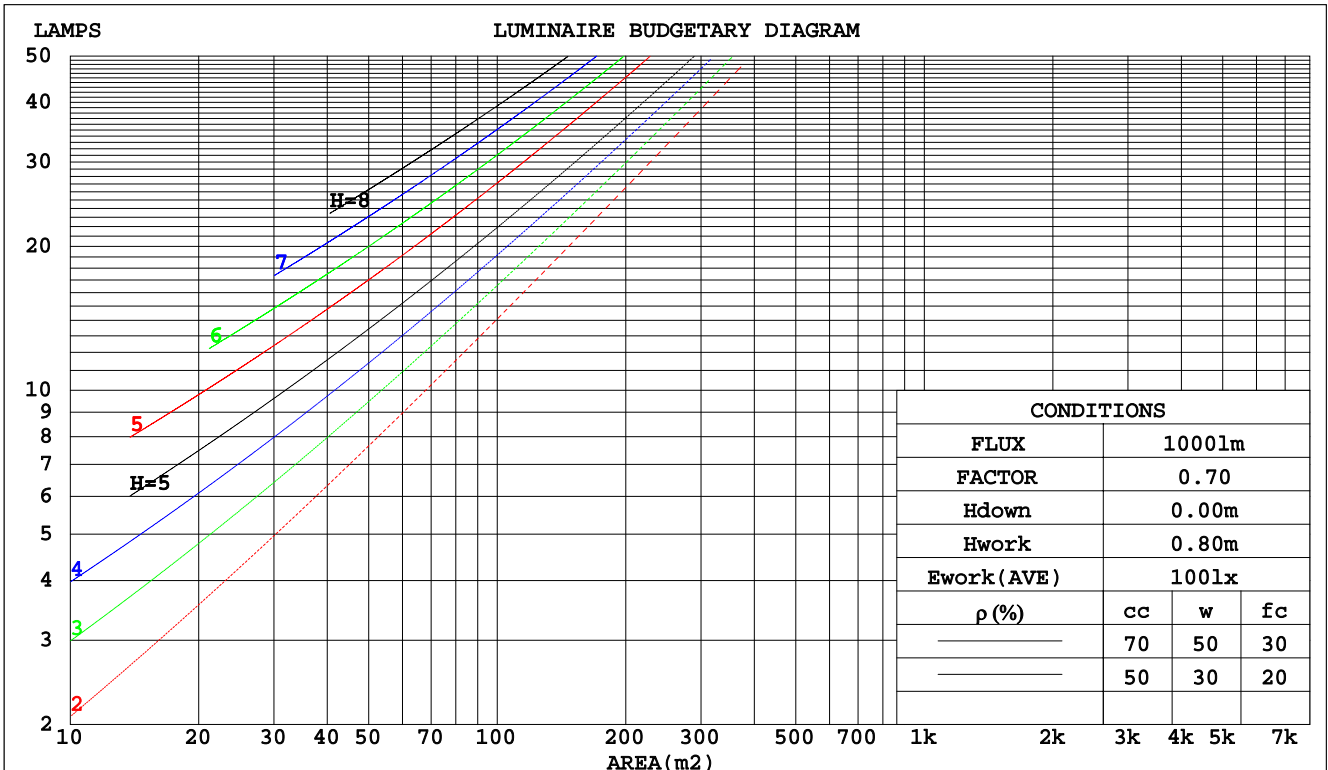
C Range: 0 - 360DEG  
 C Interval: 30.0DEG  
 Test Speed: HIGH  
 Temperature:25.3DEG  
 Operators:  
 Test Date:2021-03-04

γ Range: 0 - 180DEG  
 γ Interval: 1.0DEG  
 Test System:EVERFINE GO-2000B\_V1 SYSTEM V2.0.291  
 Humidity:65.0%  
 Test Distance:5.910m [K=1.0000]  
 Remarks:

CU AND LUMINAIRE BUDGETARY ESTIMATE DIAGRAM

Test:U:229.7V I:0.0815A P:14.90W PF:0.7959 Lamp Flux:1455.87x1 lm		
NAME: LED LIGHT	TYPE:CEILING LIGHT	WEIGHT:
SPEC.:0028920011	DIM.: Ø 308*98mm	SERIAL No.:
MFR.: LiT	SUR.: Ø 263.7mm	PROTECTION ANGLE:

pcc	80%			70%			50%			30%			10%			0
pw	50%	30%	10%	50%	30%	10%	50%	30%	10%	50%	30%	10%	50%	30%	10%	0
pfc	20%			20%			20%			20%			20%			0
RCR	RCR:Room Cavity Ratio															
	Coefficients of Utilization(CU)															
0.0	1.18	1.18	1.18	1.15	1.15	1.15	1.10	1.10	1.10	1.05	1.05	1.05	.00	.00	.00	.98
1.0	1.01	.97	.92	.99	.95	.91	.94	.91	.87	.90	.87	.84	.86	.83	.81	.79
2.0	.88	.80	.74	.86	.79	.73	.82	.76	.71	.78	.73	.69	.75	.71	.67	.65
3.0	.77	.68	.61	.75	.67	.61	.72	.65	.59	.68	.63	.58	.66	.61	.56	.54
4.0	.68	.59	.52	.66	.58	.51	.63	.56	.50	.61	.54	.49	.58	.53	.48	.46
5.0	.60	.51	.44	.59	.50	.44	.57	.49	.43	.54	.48	.42	.52	.46	.42	.40
6.0	.54	.45	.39	.53	.45	.38	.51	.43	.38	.49	.42	.37	.47	.41	.37	.34
7.0	.49	.40	.34	.48	.40	.34	.46	.39	.33	.45	.38	.33	.43	.37	.32	.30
8.0	.45	.36	.30	.44	.36	.30	.42	.35	.30	.41	.34	.29	.40	.34	.29	.27
9.0	.41	.33	.27	.40	.32	.27	.39	.32	.27	.38	.31	.26	.37	.31	.26	.24
10.0	.38	.30	.25	.37	.30	.24	.36	.29	.24	.35	.29	.24	.34	.28	.24	.22



C Range: 0 - 360DEG  
 C Interval: 30.0DEG  
 Test Speed: HIGH  
 Temperature:25.3DEG  
 Operators:  
 Test Date:2021-03-04

γ Range: 0 - 180DEG  
 γ Interval: 1.0DEG  
 Test System:EVERFINE GO-2000B\_V1 SYSTEM V2.0.291  
 Humidity:65.0%  
 Test Distance:5.910m [K=1.0000]  
 Remarks:

WEC AND CCEC

Test:U:229.7V I:0.0815A P:14.90W PF:0.7959 Lamp Flux:1455.87x1 lm		
NAME: LED LIGHT	TYPE:CEILING LIGHT	WEIGHT:
SPEC.:0028920011	DIM.: $\varnothing$ 308*98mm	SERIAL No.:
MFR.: LiT	SUR.: $\varnothing$ 263.7mm	PROTECTION ANGLE:

$\rho_{cc}$	80%			70%			50%			30%			10%			0
$\rho_w$	50%	30%	10%	50%	30%	10%	50%	30%	10%	50%	30%	10%	50%	30%	10%	0
$\rho_{fc}$	20%			20%			20%			20%			20%			0
RCR	RCR:Room Cavity Ratio						Wall Exitance Coefficients(WEC)									
0.0																
1.0	.344	.196	.062	.337	.192	.061	.322	.185	.059	.308	.178	.057	.296	.171	.055	
2.0	.311	.171	.052	.304	.168	.052	.291	.162	.050	.279	.157	.049	.268	.152	.048	
3.0	.283	.151	.045	.277	.148	.045	.265	.144	.044	.254	.139	.043	.244	.135	.042	
4.0	.258	.134	.039	.253	.132	.039	.242	.128	.038	.233	.125	.038	.224	.121	.037	
5.0	.237	.121	.035	.232	.119	.035	.223	.116	.034	.214	.113	.034	.206	.110	.033	
6.0	.219	.110	.031	.214	.108	.031	.206	.106	.031	.198	.103	.030	.191	.100	.030	
7.0	.203	.100	.028	.199	.099	.028	.191	.097	.028	.184	.094	.027	.178	.092	.027	
8.0	.189	.092	.026	.185	.091	.026	.178	.089	.025	.172	.087	.025	.166	.085	.025	
9.0	.176	.085	.024	.173	.084	.024	.167	.083	.023	.161	.081	.023	.156	.079	.023	
10.0	.166	.079	.022	.163	.079	.022	.157	.077	.022	.152	.075	.021	.147	.074	.021	

$\rho_{cc}$	80%			70%			50%			30%			10%			0
$\rho_w$	50%	30%	10%	50%	30%	10%	50%	30%	10%	50%	30%	10%	50%	30%	10%	0
$\rho_{fc}$	20%			20%			20%			20%			20%			0
RCR	RCR:Room Cavity Ratio						Ceiling Cavity Exitance Coefficients(CCEC)									
0.0	.209	.209	.209	.179	.179	.179	.122	.122	.122	.070	.070	.070	.022	.022	.022	
1.0	.201	.175	.150	.172	.150	.129	.118	.103	.089	.068	.060	.052	.022	.019	.017	
2.0	.194	.151	.114	.166	.130	.099	.114	.090	.069	.066	.052	.040	.021	.017	.013	
3.0	.186	.133	.091	.159	.115	.079	.109	.080	.056	.063	.047	.033	.020	.015	.011	
4.0	.178	.120	.076	.153	.104	.066	.105	.072	.046	.061	.042	.028	.020	.014	.009	
5.0	.170	.110	.065	.146	.095	.057	.101	.066	.040	.058	.039	.024	.019	.013	.008	
6.0	.163	.102	.058	.140	.088	.050	.097	.062	.035	.056	.036	.021	.018	.012	.007	
7.0	.156	.095	.052	.134	.082	.045	.093	.058	.032	.054	.034	.019	.017	.011	.006	
8.0	.149	.089	.048	.129	.077	.041	.089	.054	.029	.052	.032	.018	.017	.010	.006	
9.0	.143	.084	.044	.123	.073	.039	.085	.051	.027	.050	.030	.016	.016	.010	.005	
10.0	.137	.080	.041	.118	.069	.036	.082	.049	.026	.048	.029	.015	.016	.009	.005	

C Range: 0 - 360DEG  
 C Interval: 30.0DEG  
 Test Speed: HIGH  
 Temperature:25.3DEG  
 Operators:  
 Test Date:2021-03-04

$\gamma$  Range: 0 - 180DEG  
 $\gamma$  Interval: 1.0DEG  
 Test System:EVERFINE GO-2000B\_V1 SYSTEM V2.0.291  
 Humidity:65.0%  
 Test Distance:5.910m [K=1.0000]  
 Remarks:

UGR(Unified Glare Rating) Table

Test:U:229.7V I:0.0815A P:14.90W PF:0.7959 Lamp Flux:1455.87x1 lm										
NAME: LED LIGHT					TYPE:CEILING LIGHT			WEIGHT:		
SPEC.:0028920011					DIM.: $\varnothing$ 308*98mm			SERIAL No.:		
MFR.: LiT					SUR.: $\varnothing$ 263.7mm			PROTECTION ANGLE:		
ceiling/cavity	0.7	0.7	0.5	0.5	0.3	0.7	0.7	0.5	0.5	0.3
walls	0.5	0.3	0.5	0.3	0.3	0.5	0.3	0.5	0.3	0.3
working plane	0.2	0.2	0.2	0.2	0.2	0.2	0.2	0.2	0.2	0.2
Room dimensions	Viewed crosswise					Viewed endwise				
x = 2H y = 2H	19.5	21.1	19.8	21.3	21.6	19.3	20.9	19.6	21.1	21.4
3H	21.2	22.7	21.6	22.9	23.2	21.0	22.4	21.3	22.7	23.0
4H	22.0	23.4	22.4	23.7	24.0	21.8	23.1	22.1	23.4	23.7
6H	22.8	24.1	23.2	24.4	24.7	22.5	23.7	22.8	24.1	24.4
8H	23.2	24.4	23.5	24.7	25.1	22.8	24.0	23.2	24.4	24.7
12H	23.5	24.7	23.9	25.1	25.4	23.2	24.4	23.6	24.7	25.1
4H 2H	20.1	21.5	20.5	21.8	22.1	20.0	21.3	20.3	21.6	21.9
3H	22.0	23.2	22.4	23.6	23.9	21.8	23.0	22.2	23.4	23.7
4H	23.0	24.1	23.4	24.4	24.8	22.7	23.8	23.1	24.2	24.6
6H	23.9	24.9	24.3	25.3	25.7	23.6	24.6	24.1	25.0	25.4
8H	24.4	25.3	24.8	25.7	26.1	24.0	25.0	24.5	25.4	25.8
12H	24.9	25.7	25.3	26.1	26.6	24.5	25.4	25.0	25.8	26.2
8H 4H	23.3	24.2	23.8	24.6	25.1	23.1	24.0	23.6	24.4	24.9
6H	24.5	25.2	24.9	25.7	26.2	24.2	25.0	24.7	25.4	25.9
8H	25.1	25.8	25.6	26.2	26.7	24.8	25.5	25.3	25.9	26.4
12H	25.7	26.3	26.3	26.8	27.4	25.4	26.0	25.9	26.5	27.0
12H 4H	23.4	24.2	23.8	24.6	25.1	23.2	24.0	23.6	24.4	24.9
6H	24.6	25.3	25.1	25.7	26.2	24.3	25.0	24.8	25.5	26.0
8H	25.3	25.9	25.8	26.4	26.9	25.0	25.6	25.5	26.1	26.6
Variations with the observer position at spacings:										
S = 1.0H	+ 0.1 / - 0.2					+ 0.1 / - 0.2				
1.5H	+ 0.2 / - 0.3					+ 0.2 / - 0.3				
2.0H	+ 0.1 / - 0.3					+ 0.1 / - 0.3				

CIE Pub.117 Corrected 1456 lm Total Lamp Luminous Flux.(8log(F/F0) = 1.3)

C Range: 0 - 360DEG  
 C Interval: 30.0DEG  
 Test Speed: HIGH  
 Temperature:25.3DEG  
 Operators:  
 Test Date:2021-03-04

$\gamma$  Range: 0 - 180DEG  
 $\gamma$  Interval: 1.0DEG  
 Test System:EVERFINE GO-2000B\_V1 SYSTEM V2.0.291  
 Humidity:65.0%  
 Test Distance:5.910m [K=1.0000]  
 Remarks:

**UTILIZATION FACTORS TABLE**

Test:U:229.7V I:0.0815A P:14.90W PF:0.7959 Lamp Flux:1455.87x1 lm		
NAME: LED LIGHT	TYPE:CEILING LIGHT	WEIGHT:
SPEC.:0028920011	DIM.: Ø 308*98mm	SERIAL No.:
MFR.: LiT	SUR.: Ø 263.7mm	PROTECTION ANGLE:

REFLECTANCE										
Ceiling	0.8	0.8	0.8	0.7	0.7	0.7	0.5	0.5	0.5	0
Walls	0.7	0.5	0.3	0.7	0.5	0.3	0.7	0.5	0.3	0
Working plane	0.2	0.2	0.2	0.2	0.2	0.2	0.2	0.2	0.2	0
ROOM INDEX	UTILIZATION FACTORS(PERCENT) $k(RI) \times RCR = 5$									
k = 0.60	55	43	36	54	43	36	53	42	36	29
0.80	65	53	45	64	52	45	62	52	45	37
1.00	73	61	54	72	61	53	69	62	53	45
1.25	80	69	61	79	68	61	76	67	60	52
1.50	85	74	67	83	73	66	80	72	65	57
2.00	92	83	76	90	81	75	86	79	73	65
2.50	96	87	81	94	86	80	90	83	78	69
3.00	100	92	86	97	90	84	93	87	82	73
4.00	104	97	92	101	95	90	97	92	88	78
5.00	106	101	96	104	99	94	99	95	91	81
ROOM INDEX	UF(total)									Direct
According to DIN EN 13032-2 2004			Suspended				SHRNOM = 1.25			

C Range: 0 - 360DEG  
 C Interval: 30.0DEG  
 Test Speed: HIGH  
 Temperature:25.3DEG  
 Operators:  
 Test Date:2021-03-04

$\gamma$  Range: 0 - 180DEG  
 $\gamma$  Interval: 1.0DEG  
 Test System:EVERFINE GO-2000B\_V1 SYSTEM V2.0.291  
 Humidity:65.0%  
 Test Distance:5.910m [K=1.0000]  
 Remarks:

ISOCANDELA DIAGRAM

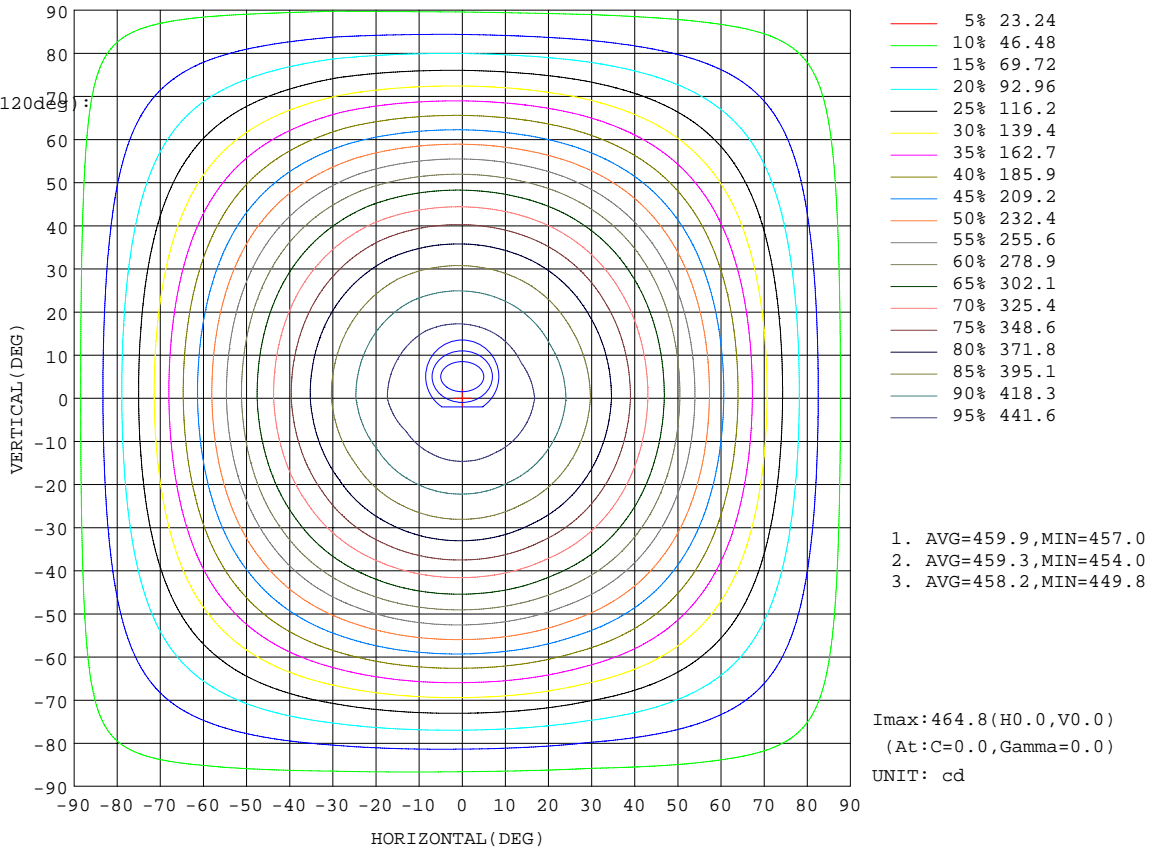
Test:U:229.7V I:0.0815A P:14.90W PF:0.7959 Lamp Flux:1455.87x1 lm		
NAME: LED LIGHT	TYPE:CEILING LIGHT	WEIGHT:
SPEC.:0028920011	DIM.: $\varnothing$ 308*98mm	SERIAL No.:
MFR.: LiT	SUR.: $\varnothing$ 263.7mm	PROTECTION ANGLE:

Conical surface Flux(90deg):

712.43 lm  
%lum = 48.9%  
%lamp = 48.9%

Conical surface Flux(120deg):

1055.9 lm  
%lum = 72.5%  
%lamp = 72.5%

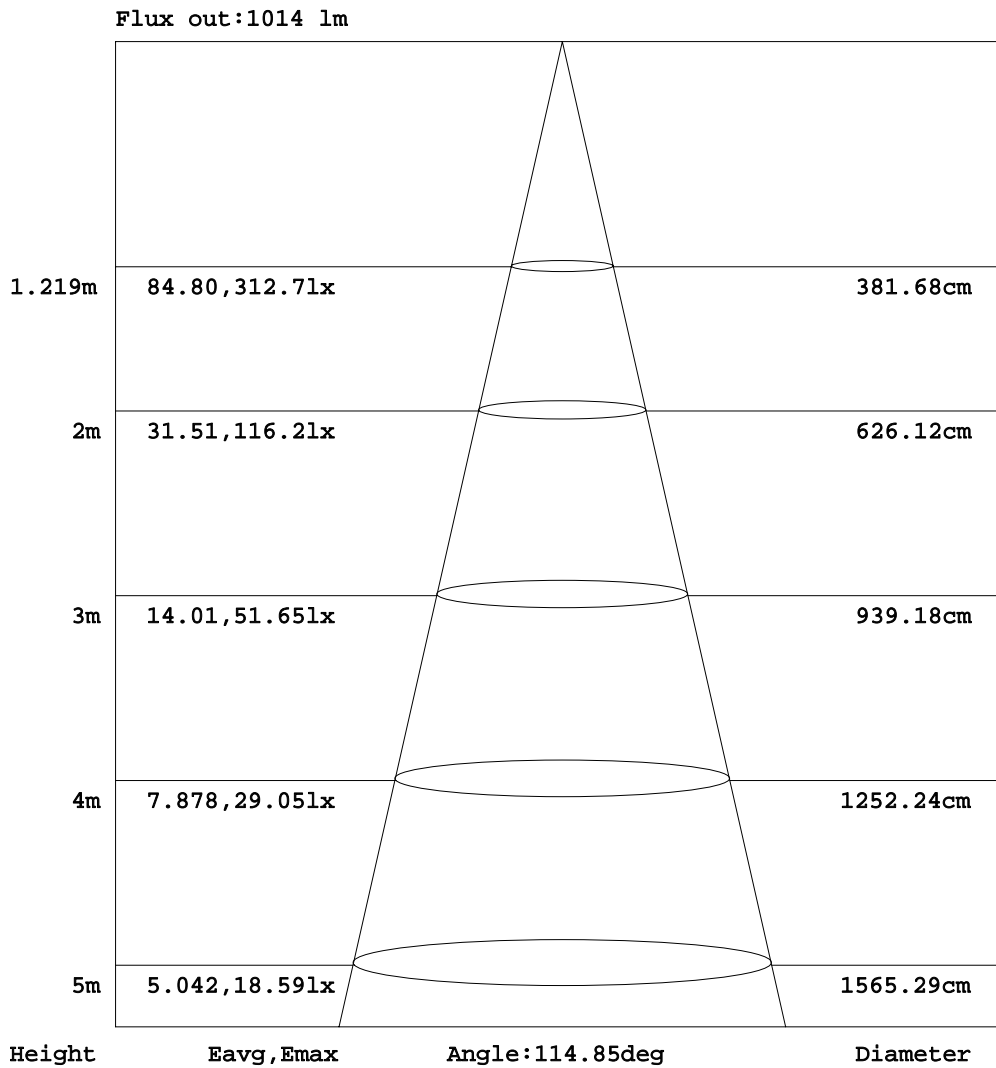


C Range: 0 - 360DEG  
C Interval: 30.0DEG  
Test Speed: HIGH  
Temperature: 25.3DEG  
Operators:  
Test Date: 2021-03-04

$\gamma$  Range: 0 - 180DEG  
 $\gamma$  Interval: 1.0DEG  
Test System: EVERFINE GO-2000B\_V1 SYSTEM V2.0.291  
Humidity: 65.0%  
Test Distance: 5.910m [K=1.0000]  
Remarks:

AAI Figure

Test:U:229.7V I:0.0815A P:14.90W PF:0.7959 Lamp Flux:1455.87x1 lm		
NAME: LED LIGHT	TYPE:CEILING LIGHT	WEIGHT:
SPEC.:0028920011	DIM.: $\varnothing$ 308*98mm	SERIAL No.:
MFR.: LiT	SUR.: $\varnothing$ 263.7mm	PROTECTION ANGLE:



Note:The Curves indicate the illuminated area and the average illumination when the luminaire is at different distance.

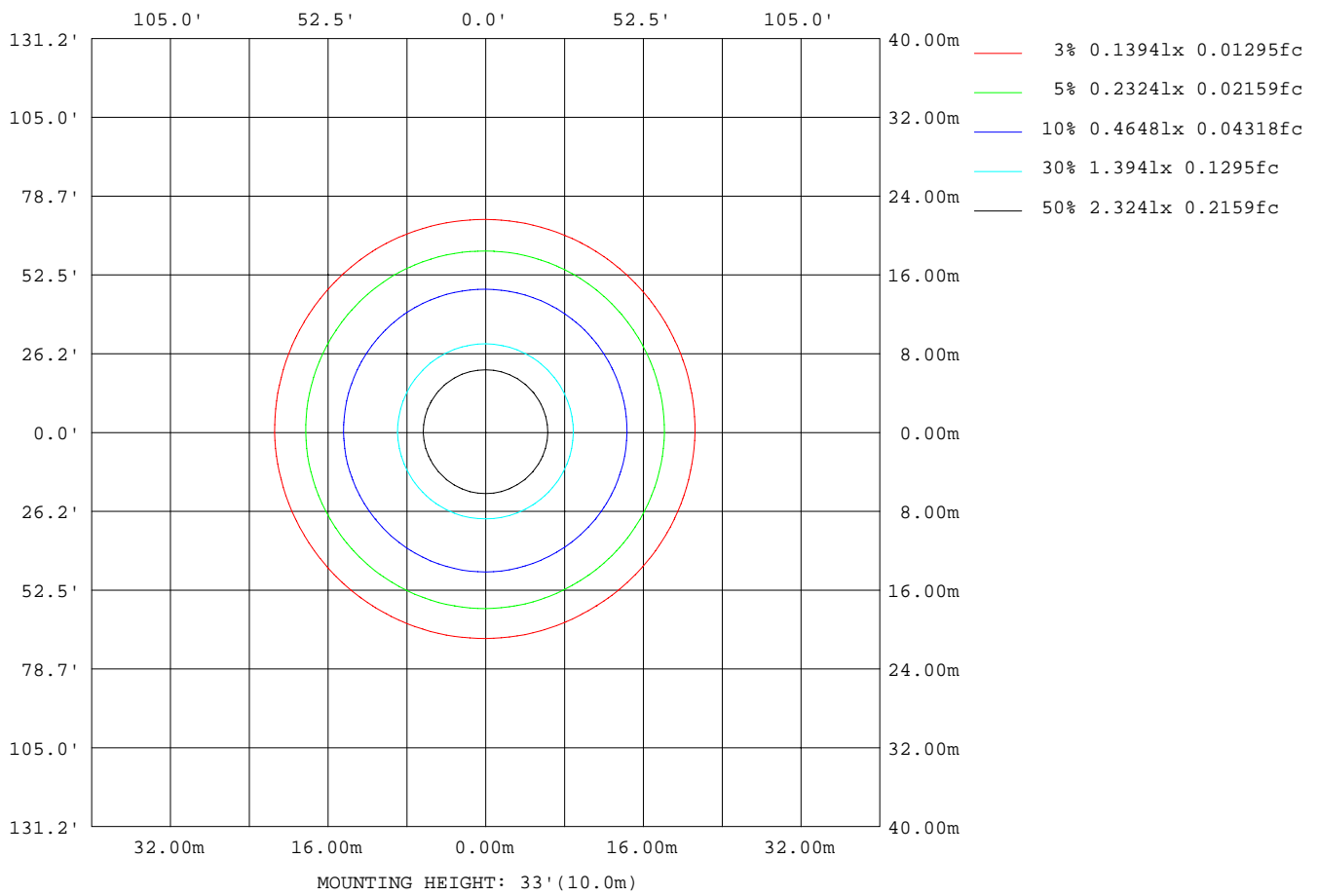
C Range: 0 - 360DEG  
 C Interval: 30.0DEG  
 Test Speed: HIGH  
 Temperature:25.3DEG  
 Operators:  
 Test Date:2021-03-04

$\gamma$  Range: 0 - 180DEG  
 $\gamma$  Interval: 1.0DEG  
 Test System:EVERFINE GO-2000B\_V1 SYSTEM V2.0.291  
 Humidity:65.0%  
 Test Distance:5.910m [K=1.0000]  
 Remarks:



ISOLUX DIAGRAM

Test:U:229.7V I:0.0815A P:14.90W PF:0.7959 Lamp Flux:1455.87x1 lm		
NAME: LED LIGHT	TYPE:CEILING LIGHT	WEIGHT:
SPEC.:0028920011	DIM.: $\varnothing$ 308*98mm	SERIAL No.:
MFR.: LiT	SUR.: $\varnothing$ 263.7mm	PROTECTION ANGLE:



C Range: 0 - 360DEG  
 C Interval: 30.0DEG  
 Test Speed: HIGH  
 Temperature:25.3DEG  
 Operators:  
 Test Date:2021-03-04

$\gamma$  Range: 0 - 180DEG  
 $\gamma$  Interval: 1.0DEG  
 Test System:EVERFINE GO-2000B\_V1 SYSTEM V2.0.291  
 Humidity:65.0%  
 Test Distance:5.910m [K=1.0000]  
 Remarks:

**LED Avg.L Report**

Test:U:229.7V I:0.0815A P:14.90W PF:0.7959 Lamp Flux:1455.87x1 lm		
NAME: LED LIGHT	TYPE:CEILING LIGHT	WEIGHT:
SPEC.:0028920011	DIM.: $\varnothing$ 308*98mm	SERIAL No.:
MFR.: LiT	SUR.: $\varnothing$ 263.7mm	PROTECTION ANGLE:

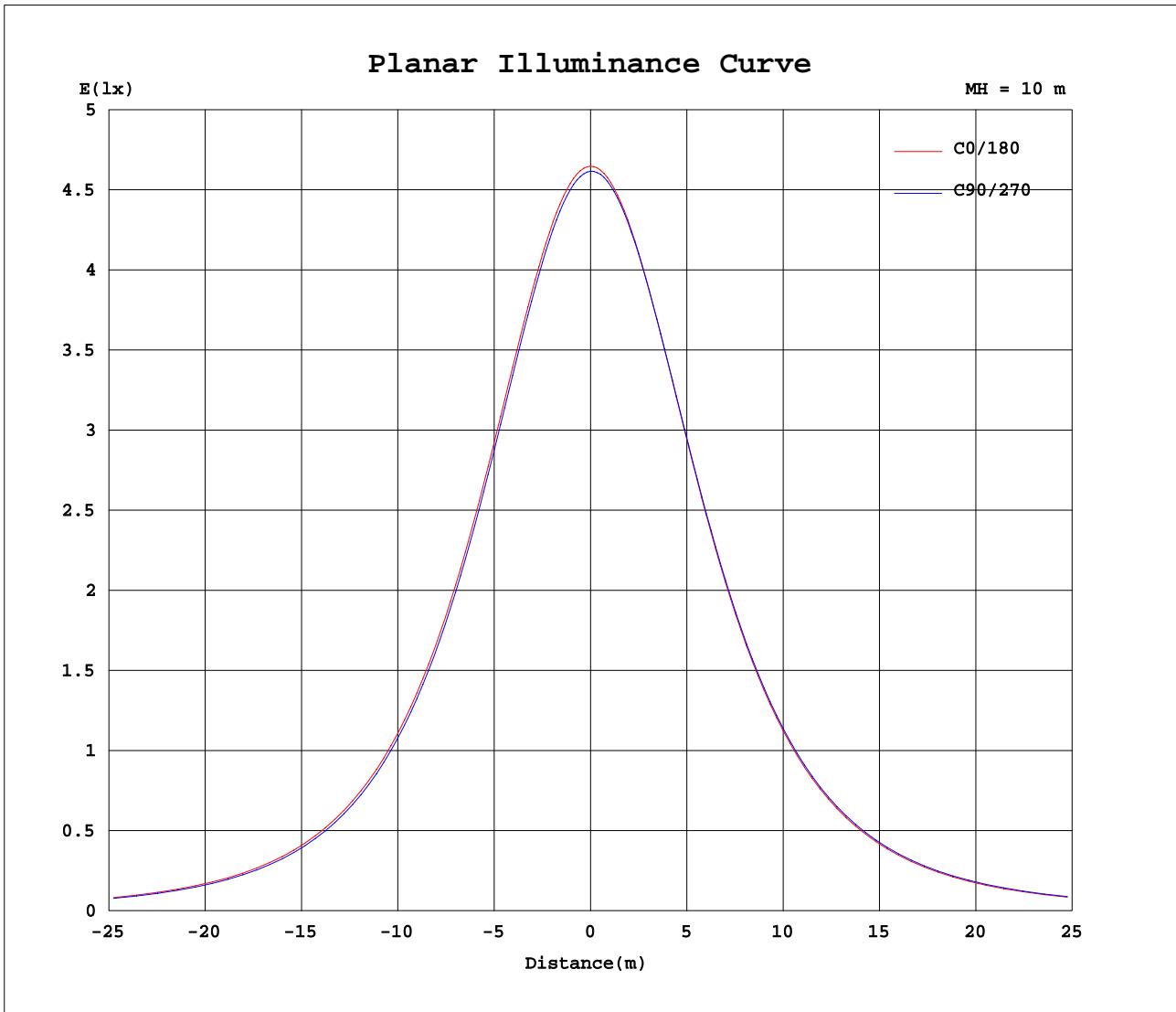
AvgL	cd/m2
L_0~180(65)av	7388
L_0~180(75)av	7597
L_0~180(85)av	11819
L_90~270(65)av	7332
L_90~270(75)av	7556
L_90~270(85)av	11836
L_45(65)av	7336
L_45(75)av	7549
L_45(85)av	11766

Standard: GB/T 29293-2012

C Range: 0 - 360DEG  
 C Interval: 30.0DEG  
 Test Speed: HIGH  
 Temperature:25.3DEG  
 Operators:  
 Test Date:2021-03-04

$\gamma$  Range: 0 - 180DEG  
 $\gamma$  Interval: 1.0DEG  
 Test System:EVERFINE GO-2000B\_V1 SYSTEM V2.0.291  
 Humidity:65.0%  
 Test Distance:5.910m [K=1.0000]  
 Remarks:

Planar Illuminance Curve



C Range: 0 - 360DEG  
 C Interval: 30.0DEG  
 Test Speed: HIGH  
 Temperature: 25.3DEG  
 Operators:  
 Test Date: 2021-03-04

$\gamma$  Range: 0 - 180DEG  
 $\gamma$  Interval: 1.0DEG  
 Test System: EVERFINE GO-2000B\_V1 SYSTEM V2.0.291  
 Humidity: 65.0%  
 Test Distance: 5.910m [K=1.0000]  
 Remarks:

LUMINOUS DISTRIBUTION INTENSITY DATA

Test:U:229.7V I:0.0815A P:14.90W PF:0.7959 Lamp Flux:1455.87x1 lm		
NAME: LED LIGHT	TYPE:CEILING LIGHT	WEIGHT:
SPEC.:0028920011	DIM.: $\varnothing$ 308*98mm	SERIAL No.:
MFR.: LiT	SUR.: $\varnothing$ 263.7mm	PROTECTION ANGLE:

Table--1

UNIT: cd

C(DEG) γ (DEG)	0	30	60	90	120	150	180	210	240	270	300	330							
0	465	463	462	462	461	461	465	463	462	462	461	461							
5	462	460	459	459	458	458	463	462	461	461	460	459							
10	456	454	452	452	451	452	457	457	457	456	455	453							
15	446	443	441	441	441	442	448	447	448	447	445	444							
20	432	429	426	426	426	428	434	435	435	434	433	430							
25	415	411	408	408	409	410	417	418	419	418	416	414							
30	394	390	386	386	387	390	397	398	400	398	396	394							
35	370	365	361	362	363	366	373	375	377	376	374	370							
40	343	338	334	335	336	339	347	349	352	350	348	344							
45	314	308	304	305	307	310	318	321	324	322	319	315							
50	282	276	272	273	275	279	287	290	293	291	289	284							
55	248	243	238	239	242	246	253	257	261	259	256	251							
60	214	208	203	204	207	211	219	223	227	225	222	217							
65	178	173	168	169	172	176	184	188	192	190	187	182							
70	144	139	134	136	138	142	149	154	157	155	153	148							
75	112	107	103	104	106	111	116	121	124	123	120	115							
80	82.6	78.6	75.3	76.5	78.2	81.9	87.0	90.6	94.1	92.5	90.2	85.9							
85	58.0	54.6	52.1	53.1	54.6	57.4	61.5	64.8	67.5	66.6	64.3	60.8							
90	37.6	35.0	33.2	34.0	35.2	37.3	40.6	43.3	45.5	44.7	42.9	40.0							
95	22.1	20.2	19.0	19.7	20.5	22.0	24.3	26.4	28.0	27.4	26.0	24.0							
100	11.0	10.1	9.42	9.86	10.4	11.4	12.8	14.3	15.3	14.9	13.9	12.6							
105	4.18	4.07	3.75	3.99	4.38	4.98	5.42	6.54	7.15	6.72	6.23	5.50							
110	1.29	1.25	1.12	1.25	1.57	1.86	1.96	2.43	2.67	2.37	2.18	1.86							
115	0.48	0.45	0.44	0.48	0.69	0.77	0.72	0.82	0.85	0.72	0.67	0.58							
120	0.45	0.48	0.47	0.48	0.56	0.57	0.54	0.48	0.46	0.45	0.46	0.45							
125	0.51	0.54	0.51	0.52	0.55	0.54	0.53	0.51	0.51	0.52	0.52	0.50							
130	0.58	0.59	0.57	0.58	0.55	0.57	0.58	0.54	0.56	0.54	0.57	0.56							
135	0.62	0.64	0.62	0.63	0.62	0.63	0.64	0.60	0.62	0.60	0.63	0.62							
140	0.67	0.70	0.67	0.68	0.65	0.68	0.69	0.65	0.67	0.65	0.68	0.66							
145	0.72	0.74	0.71	0.73	0.70	0.73	0.75	0.71	0.73	0.70	0.73	0.72							
150	0.76	0.78	0.74	0.77	0.73	0.76	0.78	0.74	0.76	0.74	0.77	0.76							
155	0.80	0.82	0.79	0.81	0.78	0.81	0.82	0.79	0.81	0.79	0.82	0.81							
160	0.84	0.85	0.81	0.83	0.81	0.83	0.85	0.82	0.84	0.81	0.84	0.83							
165	0.86	0.87	0.84	0.85	0.84	0.86	0.88	0.85	0.86	0.84	0.86	0.85							
170	0.88	0.88	0.85	0.86	0.85	0.87	0.89	0.86	0.88	0.85	0.88	0.87							
175	0.88	0.88	0.87	0.88	0.88	0.88	0.89	0.87	0.88	0.88	0.88	0.88							
180	0.88	0.88	0.88	0.88	0.88	0.88	0.89	0.88	0.88	0.88	0.88	0.88							

C Range: 0 - 360DEG  
 C Interval: 30.0DEG  
 Test Speed: HIGH  
 Temperature:25.3DEG  
 Operators:  
 Test Date:2021-03-04

γ Range: 0 - 180DEG  
 γ Interval: 1.0DEG  
 Test System:EVERFINE GO-2000B\_V1 SYSTEM V2.0.291  
 Humidity:65.0%  
 Test Distance:5.910m [K=1.0000]  
 Remarks: