

**General characteristics**

Switching diagram

11 - 3-phase motor reversing switch

Mounting form

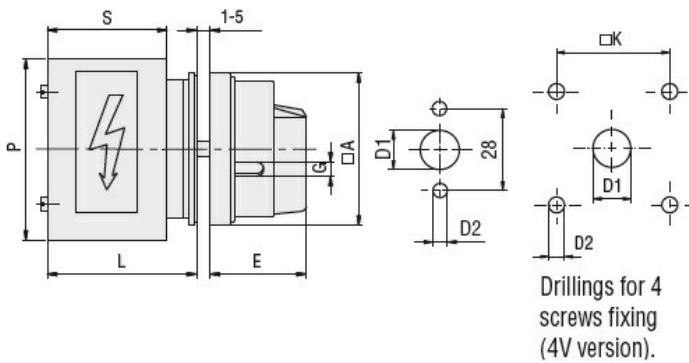
U25 - Front mounting with red/yellow handle padlockable in 0 and protection covers

**Contact characteristics**

Conventional free air thermal current I<sub>th</sub>

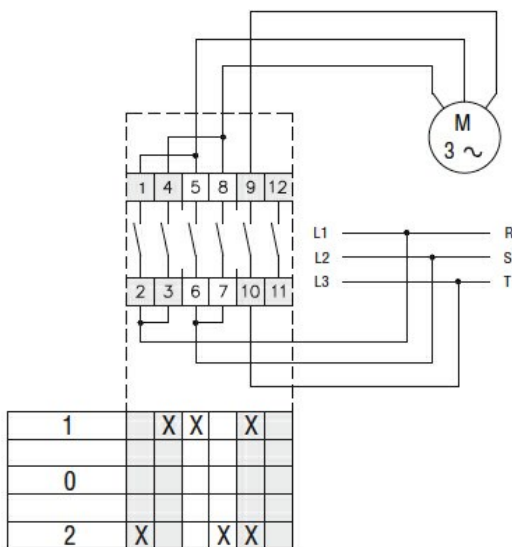
IEC/EN A 25

**Dimensions**



Series	Dimensions								
	□A	D1	D2	E	G	□K	S	P	L
7GN12	65	12	5	34.2	5	36	43	64	54.3
7GN20	65	12	5	34.2	5	36	43	64	54.3
7GN25	65	12	5	34.2	5	36	51	68	62.6
7GN32	65	14	5	38	6	48	55	77	71.7
7GN40	65	14	5	38	6	48	55	77	71.7

**Wiring diagrams**



**Certifications and compliance**

Compliance

CSA C22.2 n° 14

---

IEC/EN/BS 60947-1

---

IEC/EN/BS 60947-3

---

IEC/EN/BS 60947-5-1

---

UL60947-4-1

---

Certificates

---

cCSAus

---

EAC

---

UL