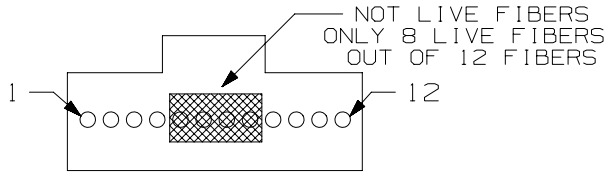


THIS COPY IS PROVIDED ON A RESTRICTED BASIS AND IS NOT TO BE USED IN ANY WAY DETRIMENTAL TO THE INTERESTS OF PANDUIT CORP.



12F MPO FERRULE POSITION  
CONNECTOR END VIEW  
(8 LIVE FIBERS - KEY UP)

- NOTES:  
1. PART NUMBERS: SEE SHEET 2 FOR ALL PART NUMBERS.  
2. CASSETTE WEIGHT: 3oz (85g)

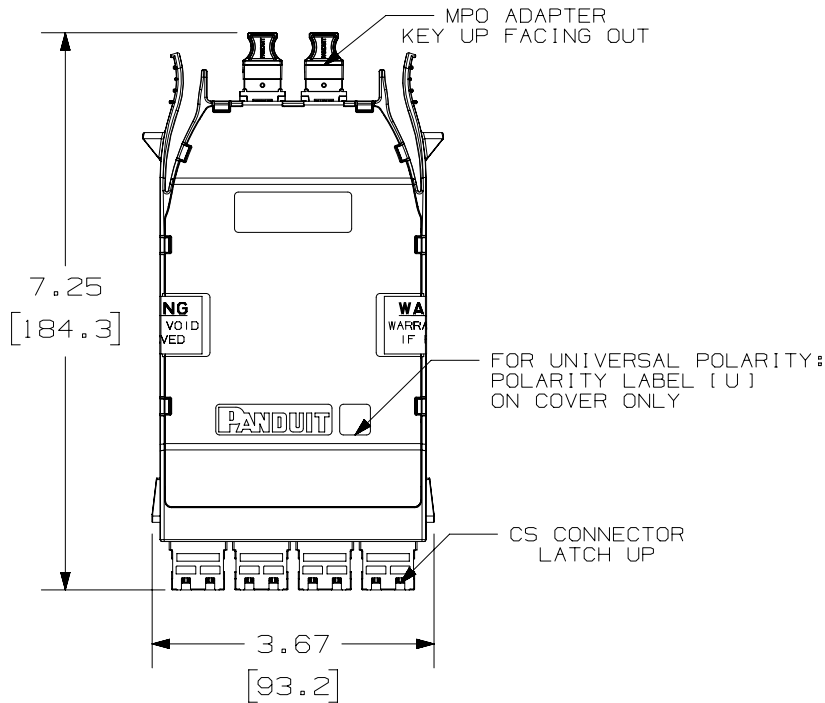
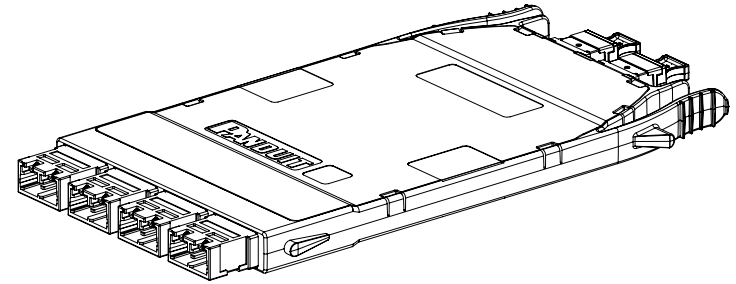


TABLE 1: FIBER POSITION

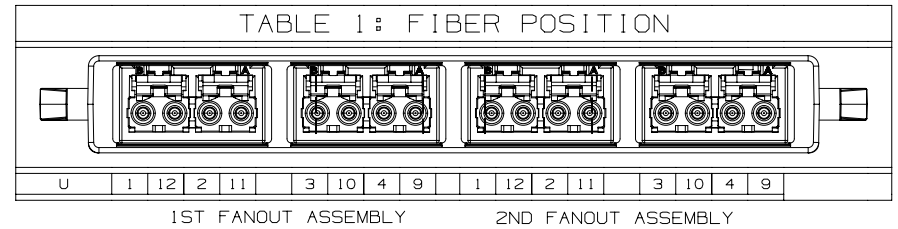
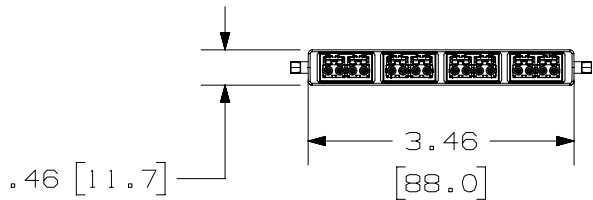


TABLE 2: FIBER COLOR KEY

|                    |                    |
|--------------------|--------------------|
| FIBER 1 - BLUE     | FIBER 7 - NOT LIVE |
| FIBER 2 - ORANGE   | FIBER 8 - NOT LIVE |
| FIBER 3 - GREEN    | FIBER 9 - YELLOW   |
| FIBER 4 - BROWN    | FIBER 10 - VIOLET  |
| FIBER 5 - NOT LIVE | FIBER 11 - ROSE    |
| FIBER 6 - NOT LIVE | FIBER 12 - AQUA    |



|   |  |  |  |
|---|--|--|--|
| TITLE   |  | HD FLEX STANDARD WIDTH CASSETTE:<br>(2) 8 FIBER MPO TO (8) CS CONNECTORS<br>(16 LIVE FIBERS)<br>CUSTOMER DRAWING |  |
| ITEM REVISION NAME  |  | 12F187QG/01  |  |
| DATASET FILE NAME   |  | 12F187QG_DC/01A  |  |
| UNLESS OTHERWISE SPECIFIED,<br>DIMENSIONAL TOLERANCES ARE: IN [mm]          |  | MATERIAL:  |  |
| .x ± .1 [2.54]      .xxx ± .005 [.127]<br>.xx ± .01 [.25]      ANGLES ± 5 ° |  |  |  |
| DRAWN BY  |  | THIRD ANGLE PROJECTION   |  |
| DATE  |  | DRAWING NUMBER:  |  |
| SAT 06-22-20  |  | 12F187QG-DC  |  |
| CHK BJBE  |  | SHT 1 OF 2   |  |
| SCALE NONE  |  | SIZE A   |  |

| 01A | 06-25-20 | SAT | BJBE | EJH | RELEASED TO PRODUCTION | 12F187PU-DC |
|-----|----------|-----|------|-----|------------------------|-------------|
| REV | DATE     | BY  | CHK  | APR | DESCRIPTION            | ECN         |

2

1

THIS COPY IS PROVIDED ON A RESTRICTED BASIS AND IS NOT TO BE USED IN ANY WAY DETRIMENTAL TO THE INTERESTS OF PANDUIT CORP.

TABLE 3: CASSETTE PART NUMBERS

| CASSETTE PART NUMBER | DESCRIPTION   |
|----------------------|---|
| FHC9N-16-C2U         | HD Flex Std. Width Cassette; (2) 8F MPO to (8) CS; OS2 Fiber; Std. Loss; Universal Polarity |
| FHCZO-16-C2U         | HD Flex Std. Width Cassette; (2) 8F MPO to (8) CS; OM4 Fiber; Opt Loss; Universal Polarity  |
| FHCZO-16-C2SS        | HD Flex Std. Width Cassette; (2) 8F MPO to (8) CS; Sales Sample; Multimode Adapters         |

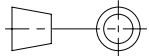
B

B



A

A

|   |                                |             |               |            |           |
|---|--------------------------------|-------------|---------------|------------|-----------|
| TITLE<br>HD FLEX STANDARD WIDTH CASSETTE;<br>(2) 8 FIBER MPO TO (8) CS CONNECTORS<br>(16 LIVE FIBERS)<br>CUSTOMER DRAWING                         |                                |             |               |            |           |
| ITEM REVISION NAME<br>12F187QG/01   | <b>PANDUIT</b>                 |             |               |            |           |
| DATASET FILE NAME<br>12F187QG_DC/01A  |                                |             |               |            |           |
| UNLESS OTHERWISE SPECIFIED,<br>DIMENSIONAL TOLERANCES ARE: IN (mm)<br>.x ± .1 (2.54)      .xxx ± .005 (.127)<br>.xx ± .01 (.25)      ANGLES ± 5 ° | MATERIAL:                      |             |               |            |           |
|  THIRD ANGLE PROJECTION                                      | DRAWING NUMBER:<br>12F187QG-DC |             |               |            |           |
| DRAWN BY<br>SAT   | DATE<br>06-22-20               | CHK<br>BJBE | SCALE<br>NONE | SHT 2 OF 2 | SIZE<br>A |

SEE SHEET 1 FOR REVISIONS

| REV | DATE | BY | CHK | APR | DESCRIPTION | ECN |
|-----|------|----|-----|-----|-------------|-----|
|     |      |    |     |     |             |     |

2

1

D10100DA/14