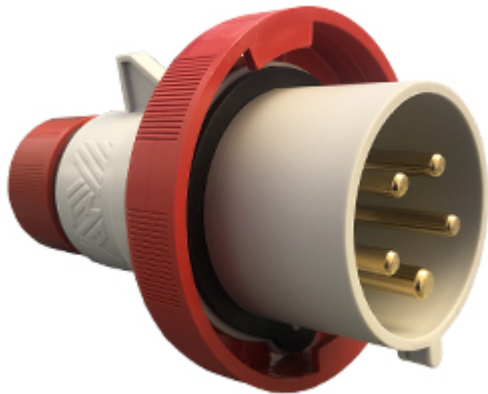



Part number

# PEW 3265 SV



Mobile plug, PLUSO series, 3 poles + N + PE, 6 h (red), 32 A, 380 ÷ 415 V, straight

## Product description

|                        |   |
|------------------------|---|
| <b>Product type</b>    | Plug<br>Mobile  |
| <b>Series</b>          | PEW...SV, PLUSO   |
| <b>Connection type</b> | Screw terminal connection   |
| <b>N. of poles</b>     | 3 poles + N +  |
| <b>Clock position</b>  | 6   |
| <b>Specification</b>   | Straight  |

## Technical data

|   |                 |
|---|-----------------|
| <b>Current</b>                                | 32 A            |
| <b>Voltage</b>                                | 380 ÷ 415 V     |
| <b>IP degree of protection</b>                | IP67            |
| <b>Further technical details</b>              |                 |
| <b>Weight</b>                                 | 270,00 g        |
| <b>Operating temperature range (min, max)</b> | -25°C ... +40°C |

## Material properties

|                              |   |
|------------------------------|---|
| <b>Colour</b>                | RAL 7035 grey, RAL 3000 red   |
| <b>RoHs conformity</b>       | Compliant with exemption<br>6(c): copper alloy containing up to 4% lead by weight |
| <b>China RoHs - EFUP</b>     | 50  |
| <b>REACH SVHC substances</b> | Yes<br>Lead   |
| <b>SCIP number</b>           | Ca7de37f-add8-4b77-9861-279c94903ade  |

## Approvals / Standards

|                           |                   |
|---------------------------|-------------------|
| <b>Reference standard</b> | EN 60309-1 and -2 |
|---------------------------|-------------------|

## General ordering information

|                   |               |
|-------------------|---------------|
| <b>EAN13 code</b> | 8015747075688 |
|-------------------|---------------|

## Packaging Information

|                              |                       |
|------------------------------|-----------------------|
| <b>Packaging length</b>      | 275,00 mm             |
| <b>Packaging height</b>      | 230,00 mm             |
| <b>Packaging width</b>       | 275,00 mm             |
| <b>Packaging weight</b>      | 3,14 kg               |
| <b>Packaging volume</b>      | 17,39 dm <sup>3</sup> |
| <b>Packaging description</b> | Carton box            |
| <b>Packaging quantity</b>    | 10 Pcs                |
| <b>Packaging EAN code</b>    | 8015747075695         |

Part number

# PEW 3265 SV



## Catalogue drawings

(16 / 32A) PEW ... SV



| PEW ... SV |        | A   | B    | Pg Ø |
|------------|--------|-----|------|------|
| <b>16A</b> | 2P+⊕   | 137 | 70   | 16   |
|            | 3P+⊕   | 142 | 78   | 16   |
|            | 3P+N+⊕ | 150 | 86   | 21   |
| <b>32A</b> | 2P+⊕   | 170 | 92   | 21   |
|            | 3P+⊕   | 170 | 92   | 21   |
|            | 3P+N+⊕ | 175 | 99,5 | 21   |

## Notes

Dimensions shown in mm are not binding and may be changed without notice.

32A only version PHW...SV)

- Compliant with EN 60309-1 and -2
- Enclosure, insert and locking ring in insulating, thermoplastic, self-extinguishing material
- PE...SV types 16A and 32A (IP44), entry with cable gland colour coded according to the operating voltage, RAL 7035 grey enclosure
- PEW...SV types 16A and 32A (IP66/IP67), entry with cable gland colour coded according to the operating voltage, RAL 7035 grey enclosure, locking ring with gasket colour coded according to operating voltage
- PEW...SV types 63A and 125A (IP67), entry with cable gland, RAL 7035 grey enclosure, locking ring with gasket colour coded according to operating voltage
- PEW...SV types 63A and 125A (IP67), cable anchoring collar incorporated in the insert
- SIP version with phase inverter (3P+N+E, h6), 16A and 32A
- Terminals with retained screws
- 63A, 125A: with pilot contact
- Nickel-plated contacts standard on 63A and 125A (on 16A and