

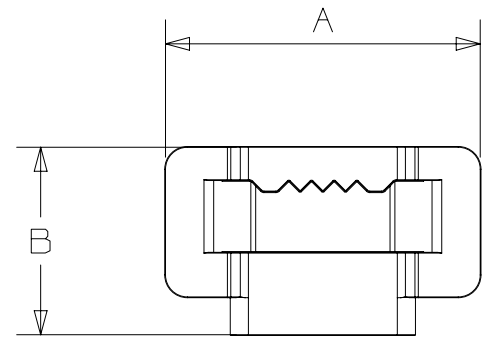
2

1

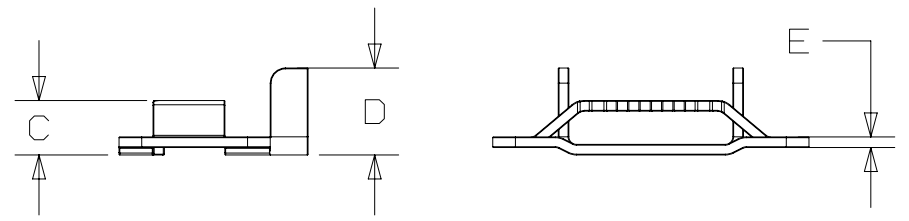
THIS COPY IS PROVIDED ON A RESTRICTED BASIS AND IS NOT TO BE USED IN ANY WAY DETRIMENTAL TO THE INTERESTS OF PANDUIT CORP.

NOTES:

1. MATERIAL: 316L STAINLESS STEEL
2. FOR USE WITH CORRESPONDING PANDUIT IMS19T75-QR6L CUSTOM LENGTH STRAPPING.
3. DIMENSIONS ARE IN MM.
4. APPLICATION TOOL: PANDUIT BT75SDT.
5. PACKAGE QUANTITY: 100 PCS PER BAG.



PANDUIT PART NO.	A	B	C	D	E
IMSBE19-C6L	40.8	25.0	7.2	11.5	1.40



REV	DATE	BY	CHK	APR	DESCRIPTION	ECN
00	9/15	JSUN				

TITLE Drawing of E Type Buckle			
CUSTOMER DRAWING			
ITEM REVISION NAME 15L322BG/00		PANDUIT	
DATASET FILE NAME 15L322BG/00			
UNLESS OTHERWISE SPECIFIED, DIMENSIONAL TOLERANCES ARE: MM		MATERIAL: SEE NOTES	
.x ± .25 .xx ± .13		DRAWING NUMBER: 15L322BG_DC	
ANGLES ± 1 °		THIRD ANGLE PROJECTION	
DRAWN BY	DATE	CHK	SCALE
SHT 1 OF 1			SIZE A

2

1

D10100DA/16